



FOR LEASE

451 - E.E. BUTLER PARKWAY - GAINESVILLE - GA - 30501

GAINESTOWN OFFICE PARK



Elegant Downtown Gainesville Office Park with Options Available

- Square Footage available July 1, 2018: **5,068 +/-** (4,368 SF plus 700 SF on 3rd floor)
 - Potential to assemble more space. Ask for other availabilities!
 - Utilities, Tenant Responsibilities: City Water, Sewer, Other
- Location: Accessible from EE Butler, Jesse Jewell Pkwy, College Avenue and Race Street
- Enjoy Ample Parking, Walking to Restaurants, Hospital & Courthouse nearby and More!

INQUIRE FOR MONTHLY LEASE RATE

CONTACT

CHARLIE HAWKINS

770.718.5206

CHAWKINS@NORTONNORTHGA.COM

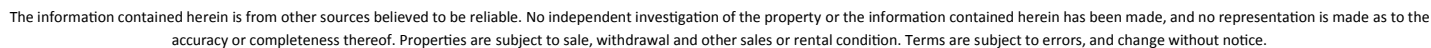
JEAN FERRIS

770.718.5265

JFERRIS@NORTONNORTHGA.COM



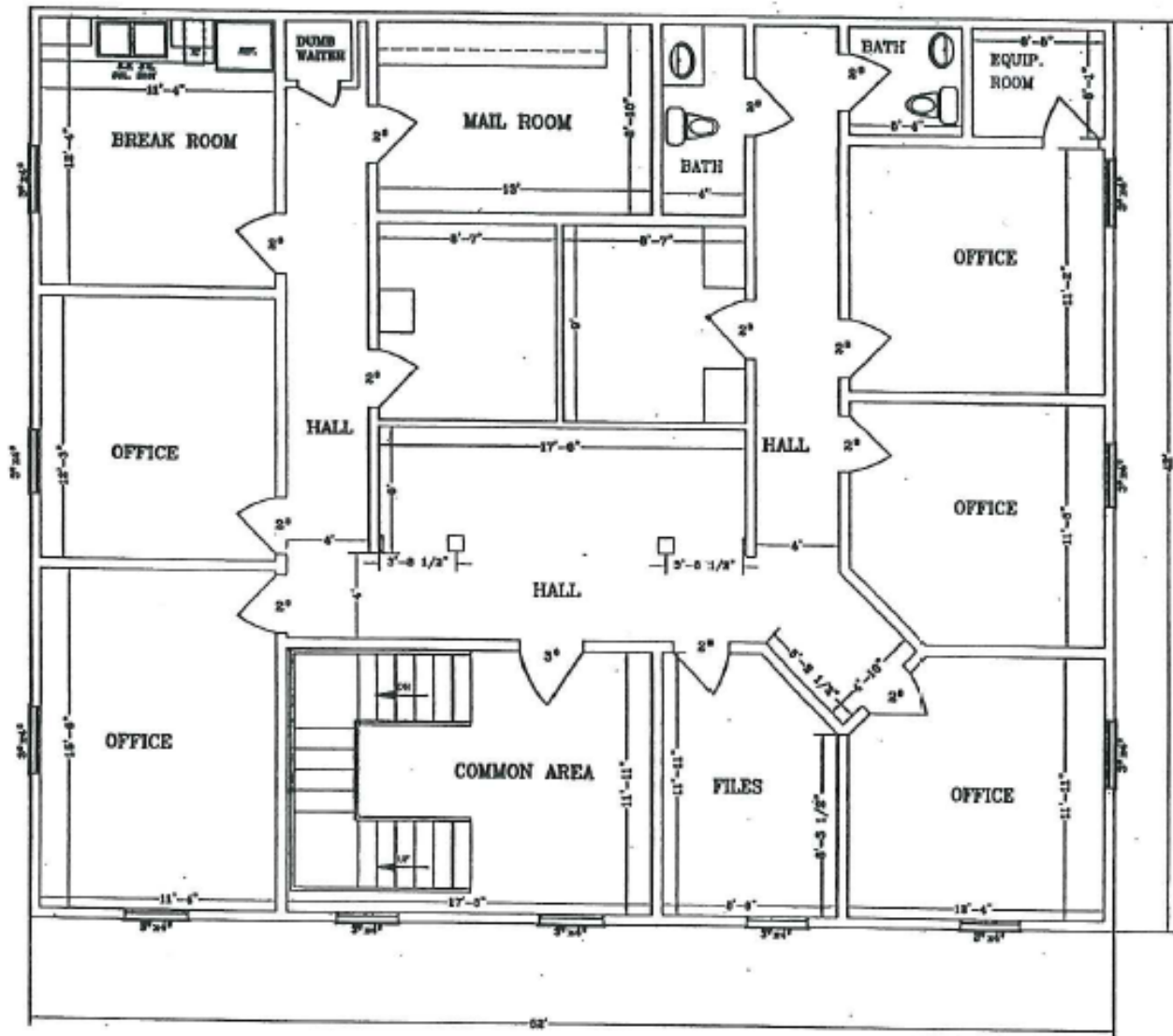
451 - E.E. BUTLER PARKWAY - GAINESVILLE - GA - 30501





FOR LEASE

451 - E.E. BUTLER PARKWAY - GAINESVILLE - GA - 30501



2184 SQ. FT.

Second Floor

+ 700 SQ. FT. For Third Floor. 451 E.E. BUTLER PKWY.
LOT #8

CONTACT

CHARLIE HAWKINS

770.718.5206

CHAWKINS@NORTONNORTHGA.COM

JEAN FERRIS

770.718.5265

JFERRIS@NORTONNORTHGA.COM



FOR LEASE

451 - E.E. BUTLER PARKWAY - GAINESVILLE - GA - 30501



CONTACT

CHARLIE HAWKINS

770.718.5206

CHAWKINS@NORTONNORTHGA.COM

JEAN FERRIS

770.718.5265

JFERRIS@NORTONNORTHGA.COM