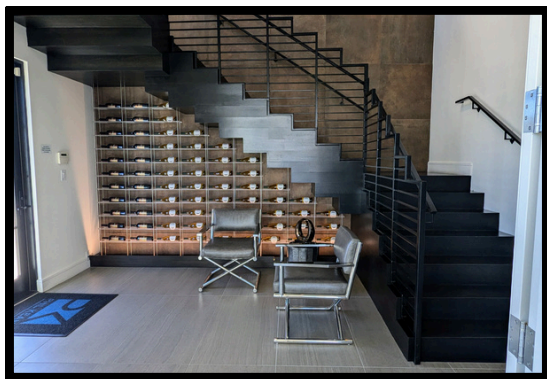




952 W. FAIRBANKS AVE | WINTER PARK, FL



OFFICE FOR LEASE

- 3750 SF standalone office/showroom for lease
- Highly visible site at the corner of Fairbanks in Winter Park
- High end finishes and truly a class A presence
- C3 Zoning
- 16 parking spaces available
- Walkable to many amenities including shopping, dining, and services
- Signage available along Fairbanks with an AADT of 25,500
- Available Immediately
- Call or email for rates

DEMOGRAPHICS

	1 MI	3 MI
Population	11,317	94,917
Households	5,546	43,637
Median Age	43.30	40.70
Median HH Income	\$69,051	\$88,814
Daytime Employees	23,096	107,935

FOR MORE INFORMATION CONTACT

Stephanie D'Amico

 **407.627.1312**



sdamico@crossmarcservices.com

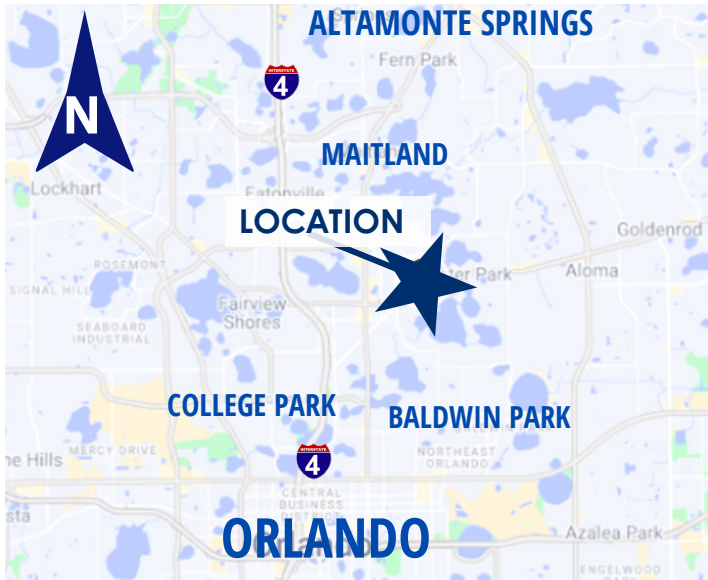


www.crossmarcservices.com



952 W. FAIRBANKS AVE | WINTER PARK, FL

MAP



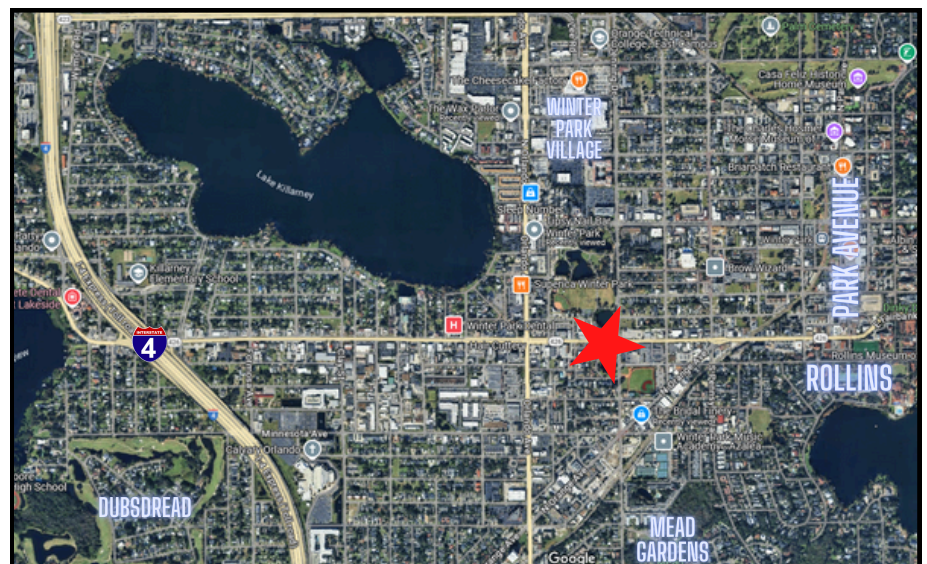
NEARBY RETAILERS AND POINTS OF INTEREST



TRADER JOE'S

BLACK BEAN DELI
A CUBAN CAFE

SPRINGHILL SUITES[®]
BY MARRIOTT



FOR MORE INFORMATION CONTACT

Stephanie D'Amico

407.627.1312

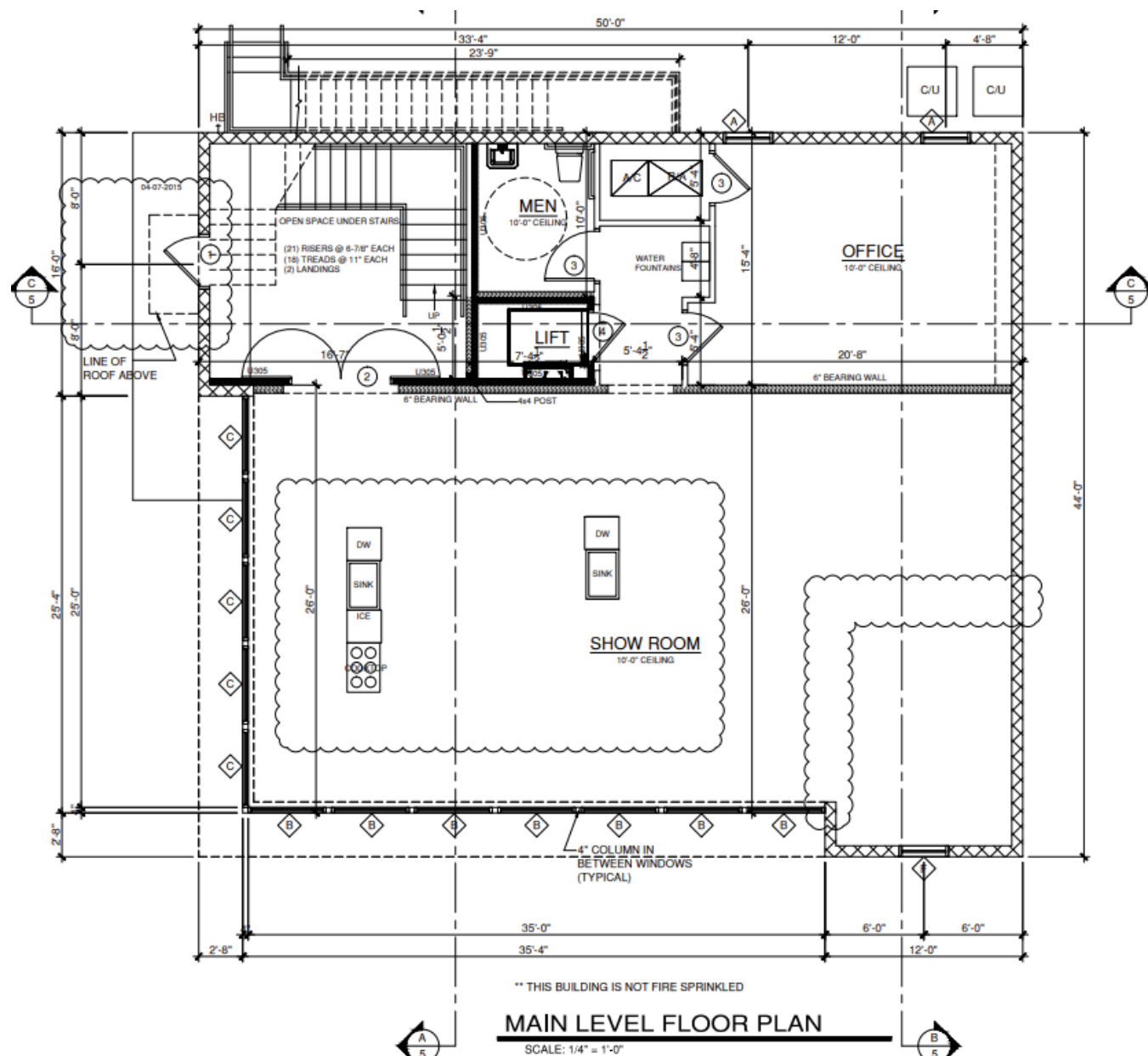


sdamico@crossmarcservices.com



www.crossmarcservices.com

FIRST FLOOR LAYOUT



FOR MORE INFORMATION CONTACT

Stephanie D'Amico



407.627.1312



 sdamico@crossmarcservices.com



 www.crossmarcservices.com



SECOND LEVEL FLOOR PLAN

SCALE: 1/4" = 1'-0"

 www.crossmarcservices.com