



Broker Incentive in Place
Through **March 2026**

For Lease

121 9th Street, Boise, Idaho

Plaza 121

Class A office space available
Updated lease rates!

 MANAGED BY:
Tomlinson & Associates



Class A finishes



Major renovation in 2004



Great location!
Near restaurants & hotels

Scott Raeber, MBA, CCIM
+1 208 472 2817
scott.raeber@colliers.com

Lance Millington
+1 208 890 4359
lance.millington@colliers.com

For Lease

Plaza 121 is modern meets luxury, with a cityscape outdoor patio, share conference room with full kitchen and an award winning on-site restaurant in core Downtown Boise.

Property Information

Building Size:	87,590 SF
Building Type:	Class A office
Parking:	On-site; price negotiable
Ceiling Heights:	9'
Major Renovation:	2004
TI Allowance:	Contact agent
Access:	Lockbox at suite

Space Available



Suite	Size	Rate	
LP80	2,193 SF	\$14.00 PSF FS	
30A	1,206 SF	\$14.00 PSF FS	
101	4,001 SF	\$23.00 PSF FS	Office/Retail
203	3,163 SF	\$18.00 PSF FS	Broker incentive in place
402	3,035 SF	\$22.00 PSF FS	
601	5,582 SF	\$22.00 PSF FS	

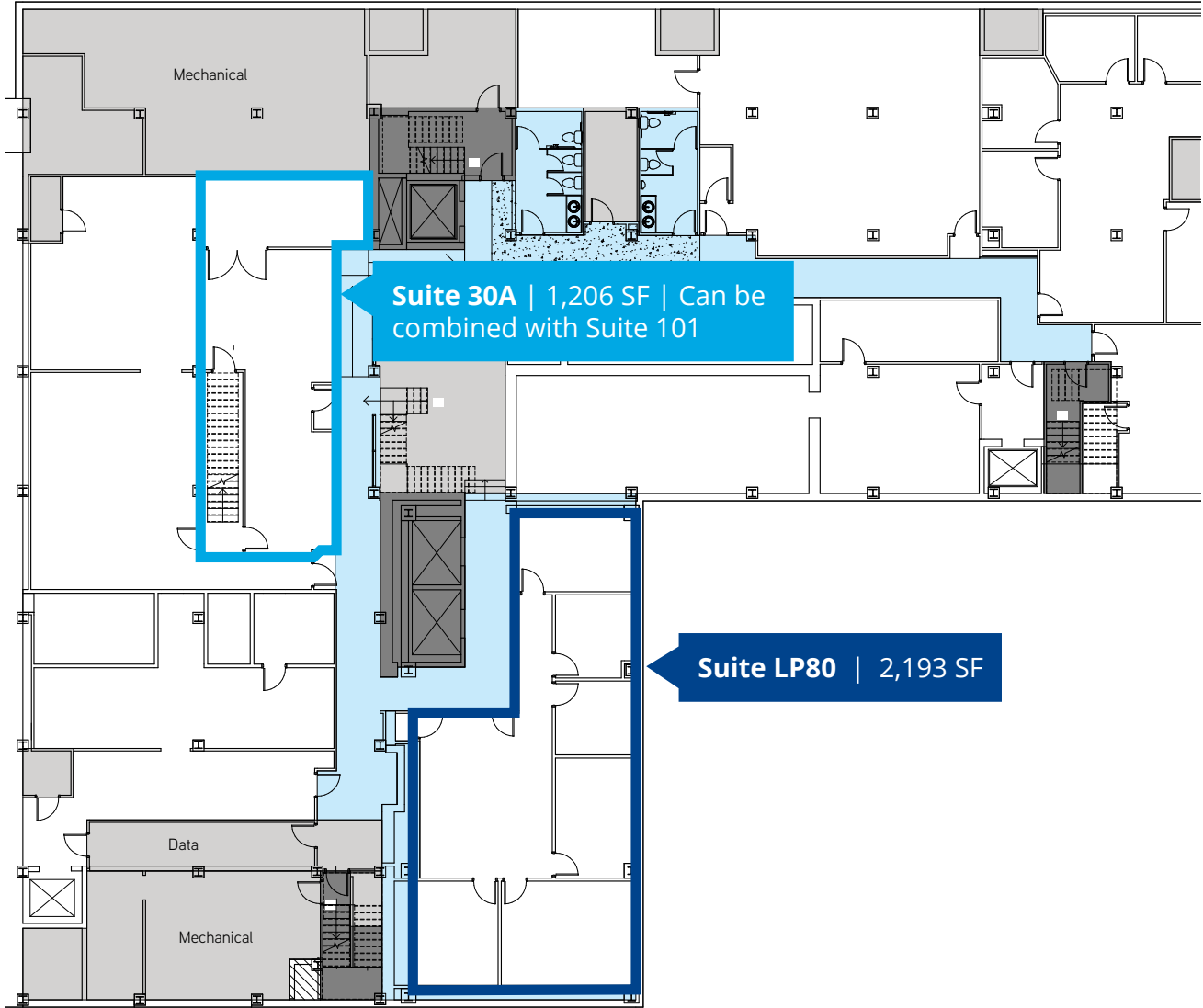
Key Highlights

- In the heart of Downtown Boise
- Walking distance to shopping, restaurants, and entertainment
- On-site management
- Shared conference room with full kitchen at discounted rate for tenants
- Cityscape roof deck available for use by all tenants
- Showers with lockers
- Surface parking available
- Fiber in building
- TI's negotiable



For Lease

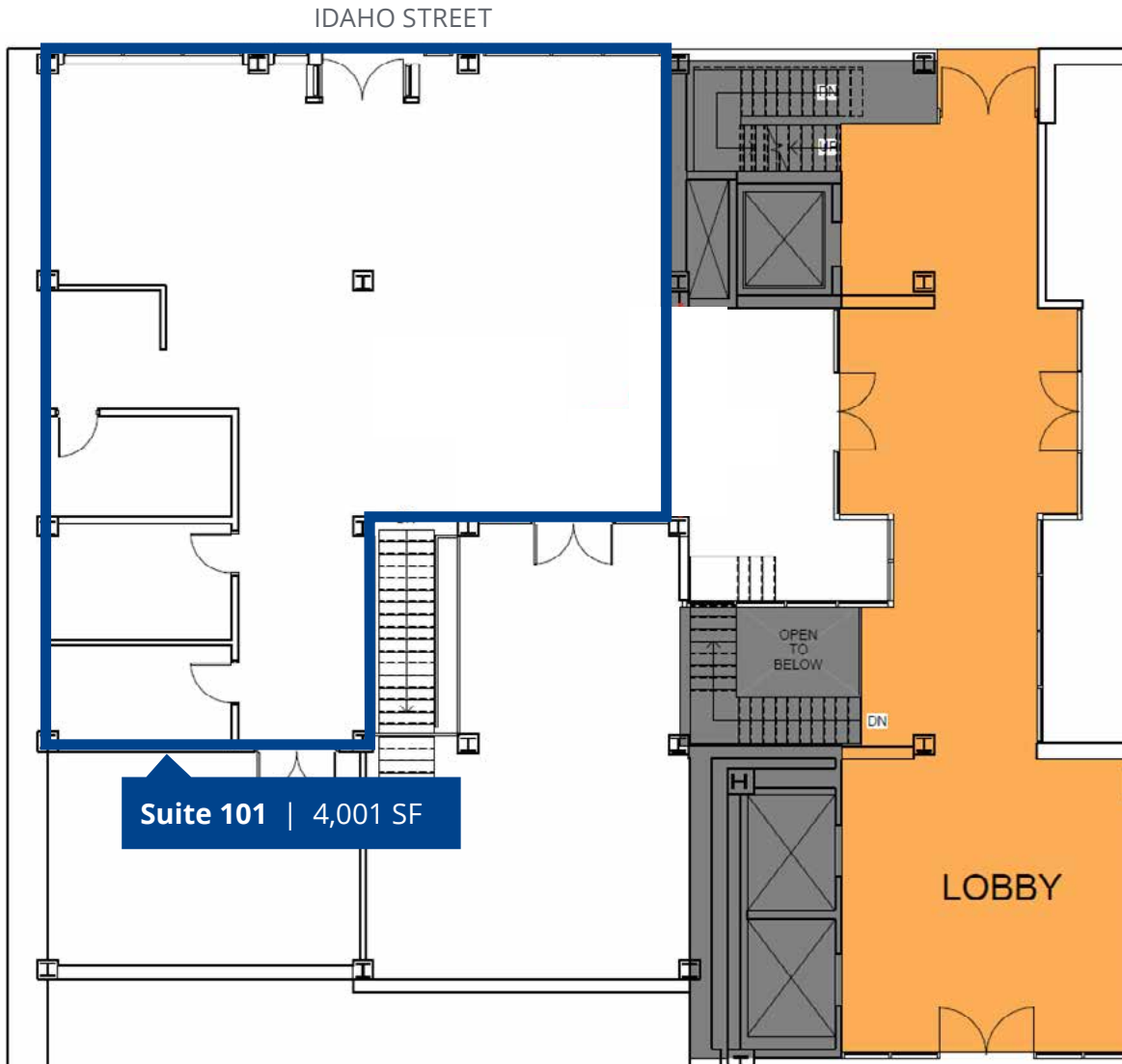
Lower Level Floor Plan



For Lease

1st Floor Plan

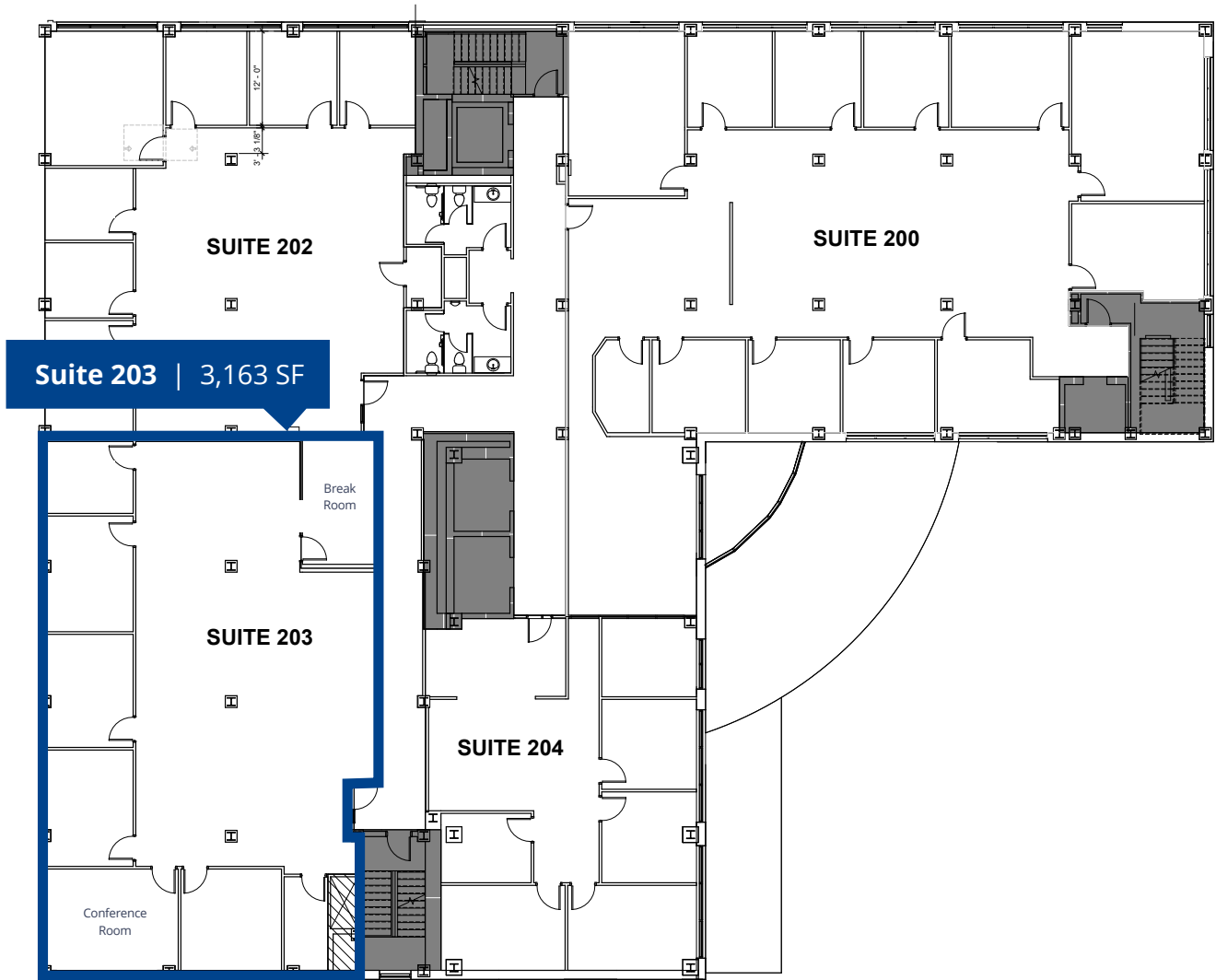
- Office/retail space
- Direct access to Idaho Street



For Lease

2nd Floor Plan

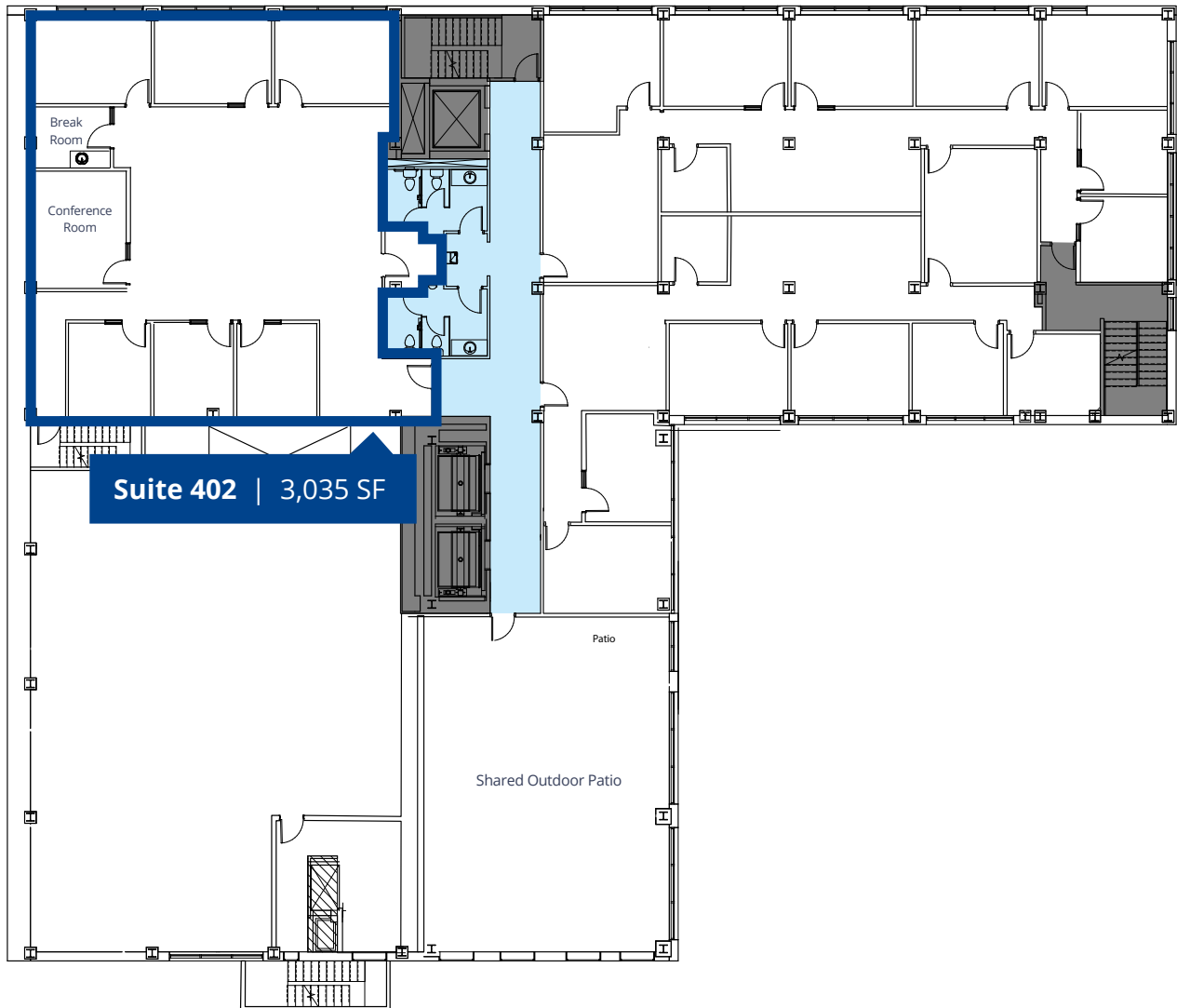
- Potential to build out breakroom
- Newly completed buildout - never been occupied!



For Lease

4th Floor Plan

- Great floorplan
- Lots of natural light
- Ready to occupy

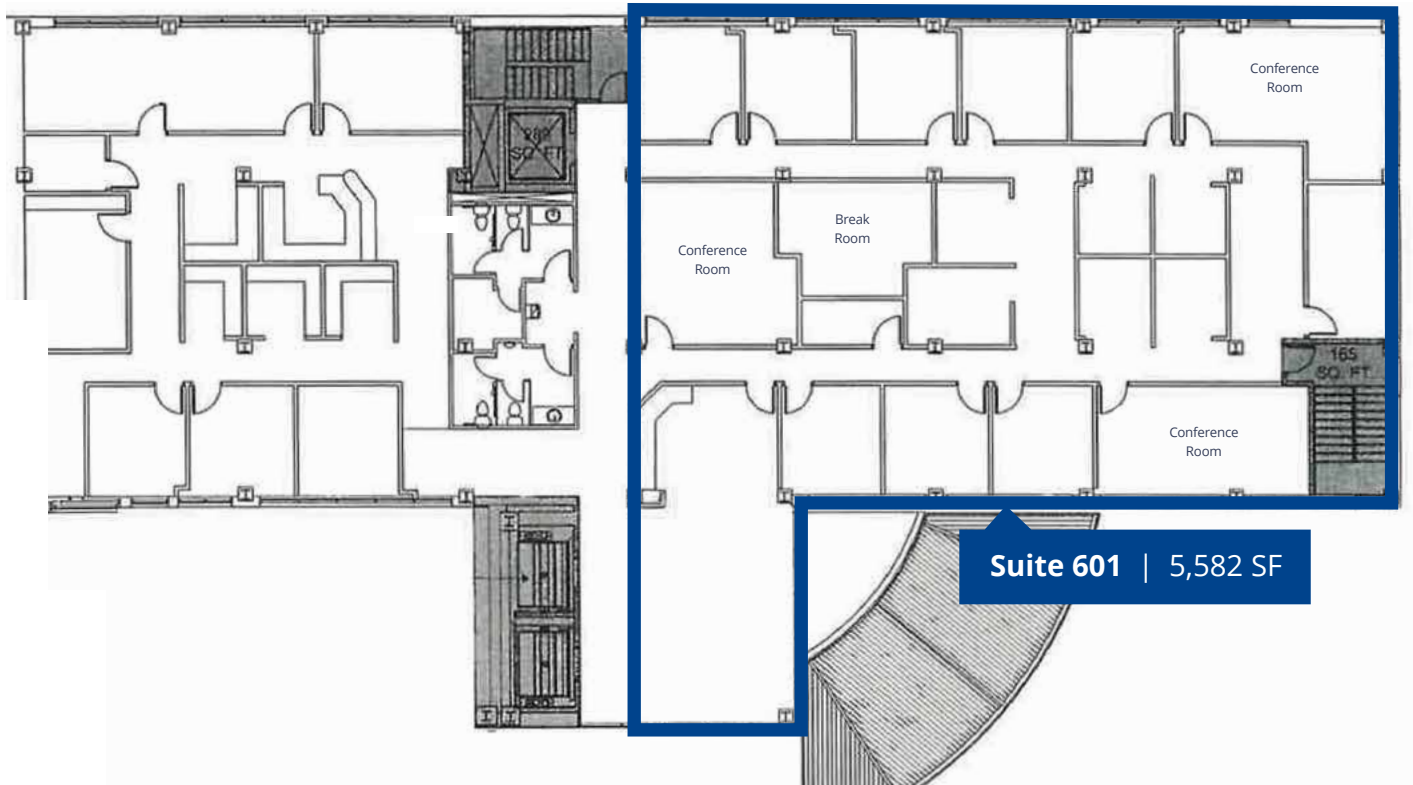


For Lease

6th Floor Plan

- Fabulous city views across the entire suite
- Recently refreshed with new paint and carpet
- Ready to occupy

[▶ Watch virtual tour](#)



Plaza 121 | For Lease

Property Gallery

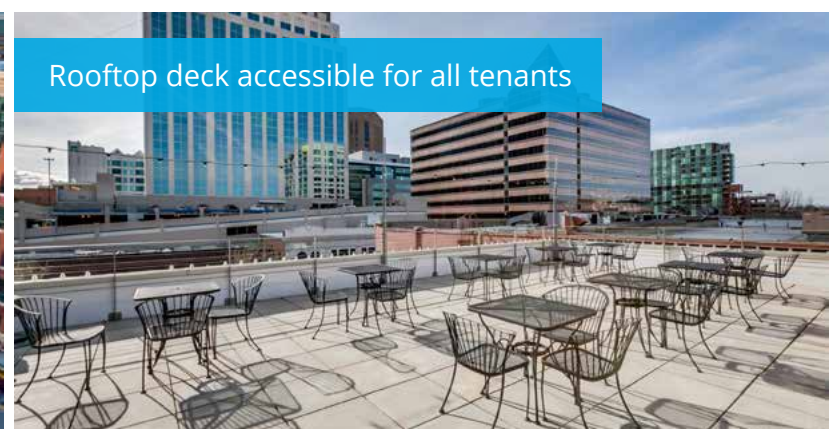


For Lease

Nearby Amenities



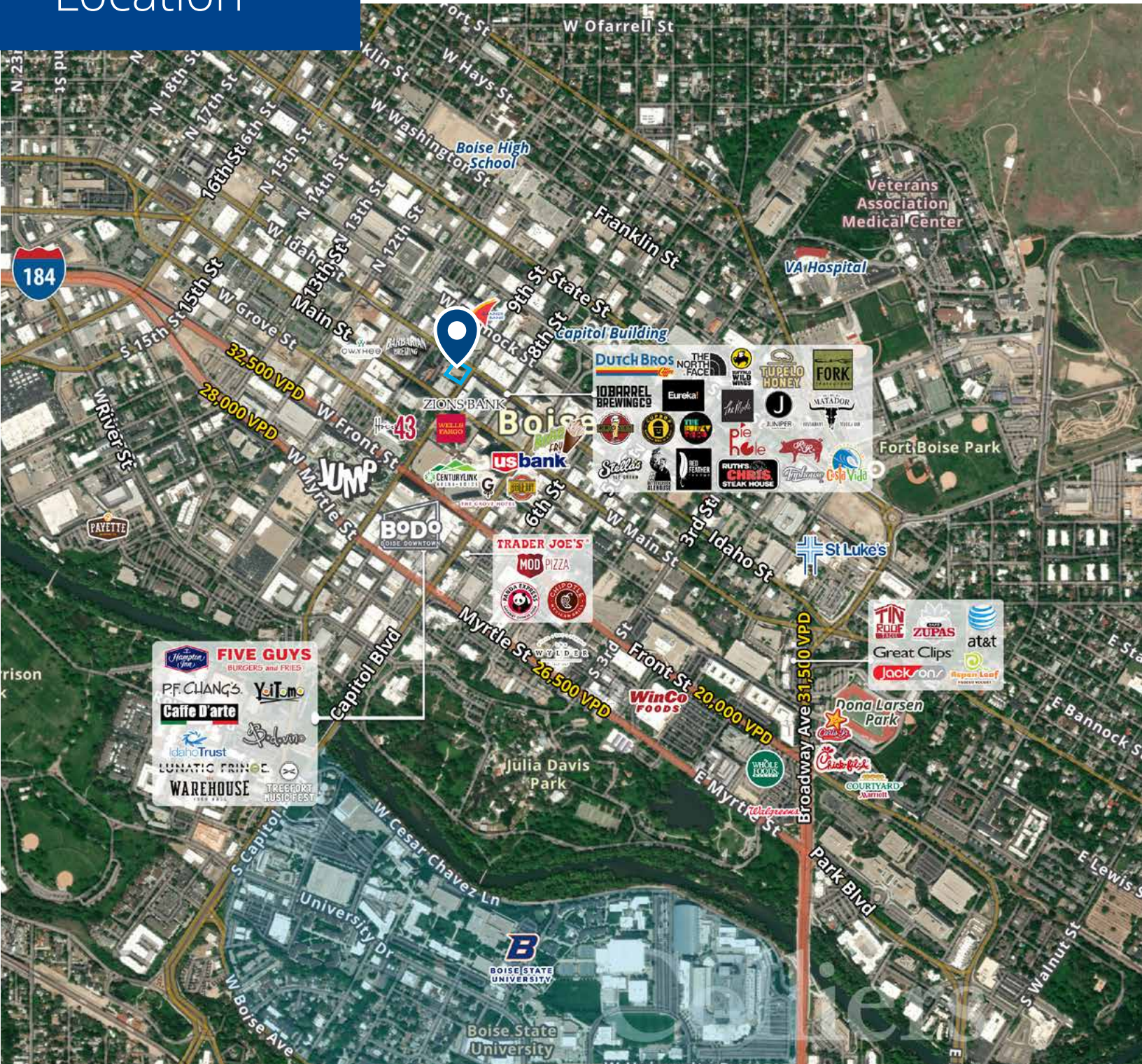
Rooftop deck accessible for all tenants



Location

 [Google Map](#)

 [Street View](#)



755 West Front Street, Suite 300
Boise, Idaho 83702
+1 208 345 9000
colliers.com/idaho

Scott Raeber, MBA, CCIM
+1 208 472 2817
scott.raeber@colliers.com

Lance Millington
+1 208 890 4359
lance.millington@colliers.com