



For Sublease

Hawthorn Business Center

5285 NE Elam Young Parkway, Suite A100 | Hillsboro, Oregon 97124

993 SF Office | \$15/sf, NNN (\$1,645/month + utilities)





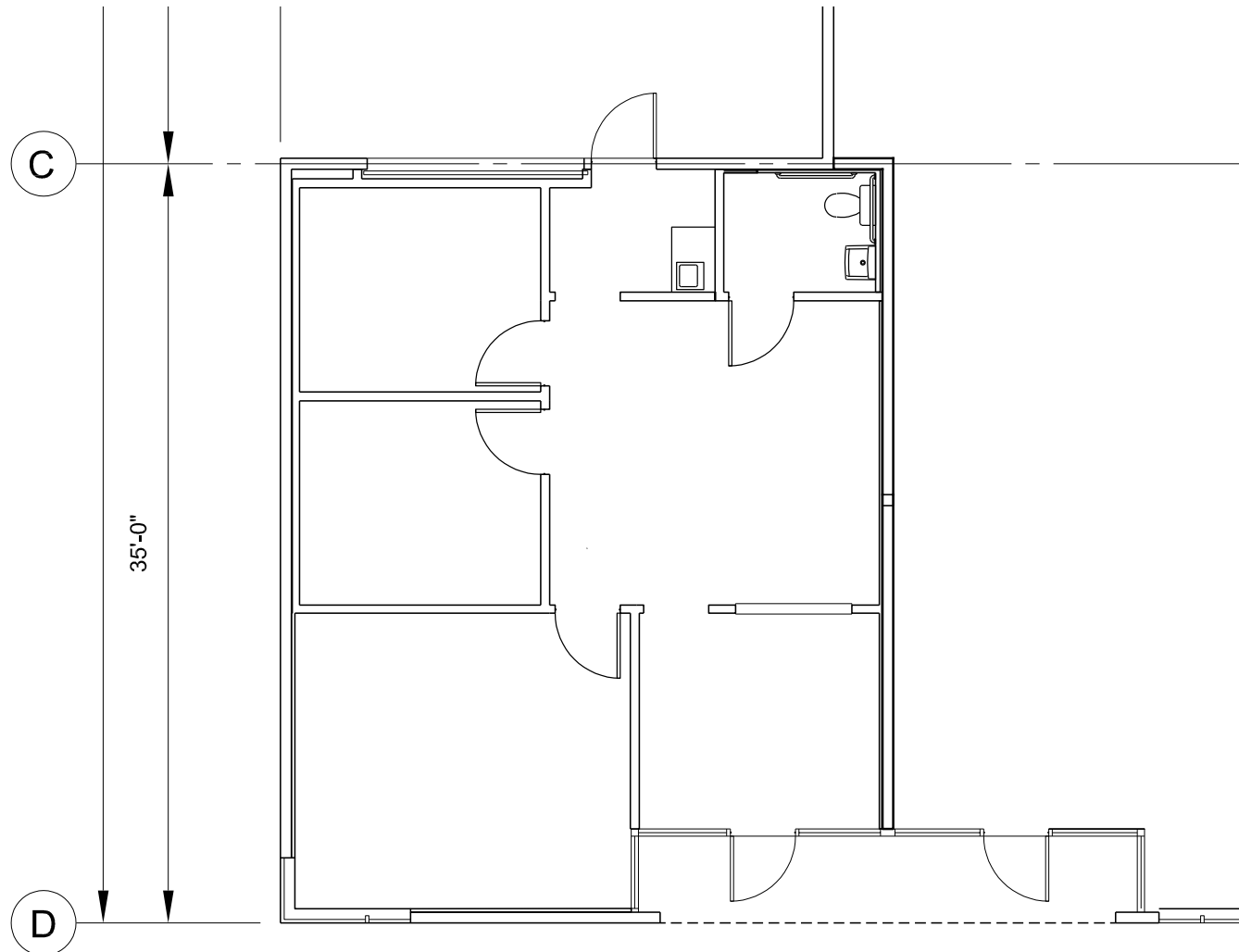
5285 NE Elam Young
Parkway, Suite A100
Hillsboro, Oregon 97124

Highlights Include:

- 993 SF
- Sublease term through November 2029
- Plug & Play – furniture available to stay
- Easily walkable to MAX light rail
- 2 private offices
- Conference room
- Reception
- Kitchenette & private bathroom
- HVAC repair/replacement included in NNNs
- Quiet business park
- 4/1,000 parking
- New carpet/paint

Floorplan

993 SF Office



For Sublease

5285 NE Elam Young Pkwy | Hillsboro, OR

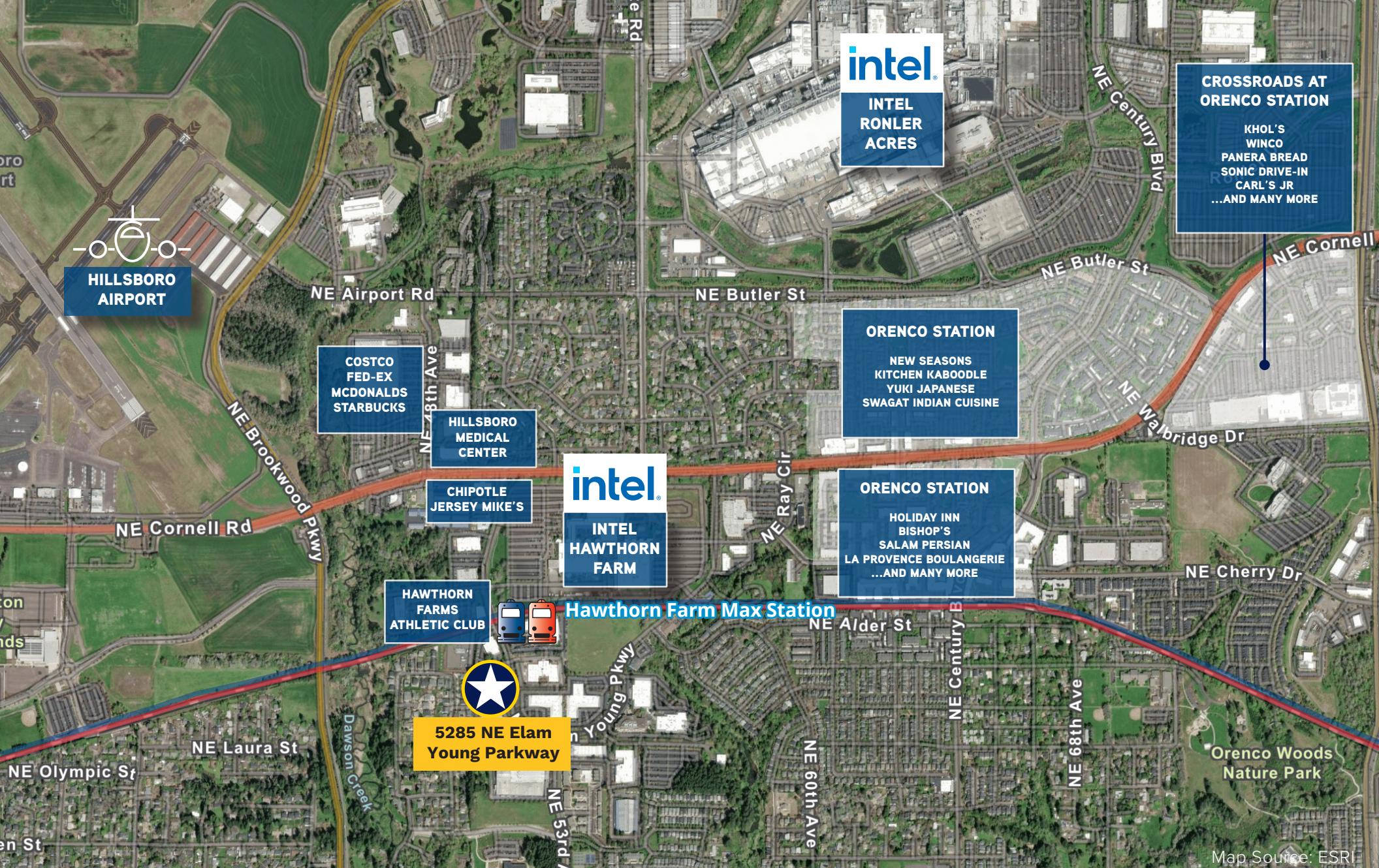
Karen Lisignoli, SIOR

Associate Vice President
+1 503 740 1679
karen.lisignoli@colliers.com

Mike Thomas

Senior Vice President
+1 503 807 0454
mike.thomas@colliers.com





For Sublease

5285 NE Elam Young Pkwy | Hillsboro, OR

Karen Lisignoli, SIOR
Associate Vice President
+1 503 740 1679
karen.lisignoli@colliers.com

Mike Thomas
Senior Vice President
+1 503 807 0454
mike.thomas@colliers.com

Colliers