



29,156 VPD (23)

24,879 VPD (23)

64

64

Pacer Court NW

Federal Dr NW

State Road 135

Landmark Ave NE

Edsel Ln NW

12,872 VPD (23)

SITE

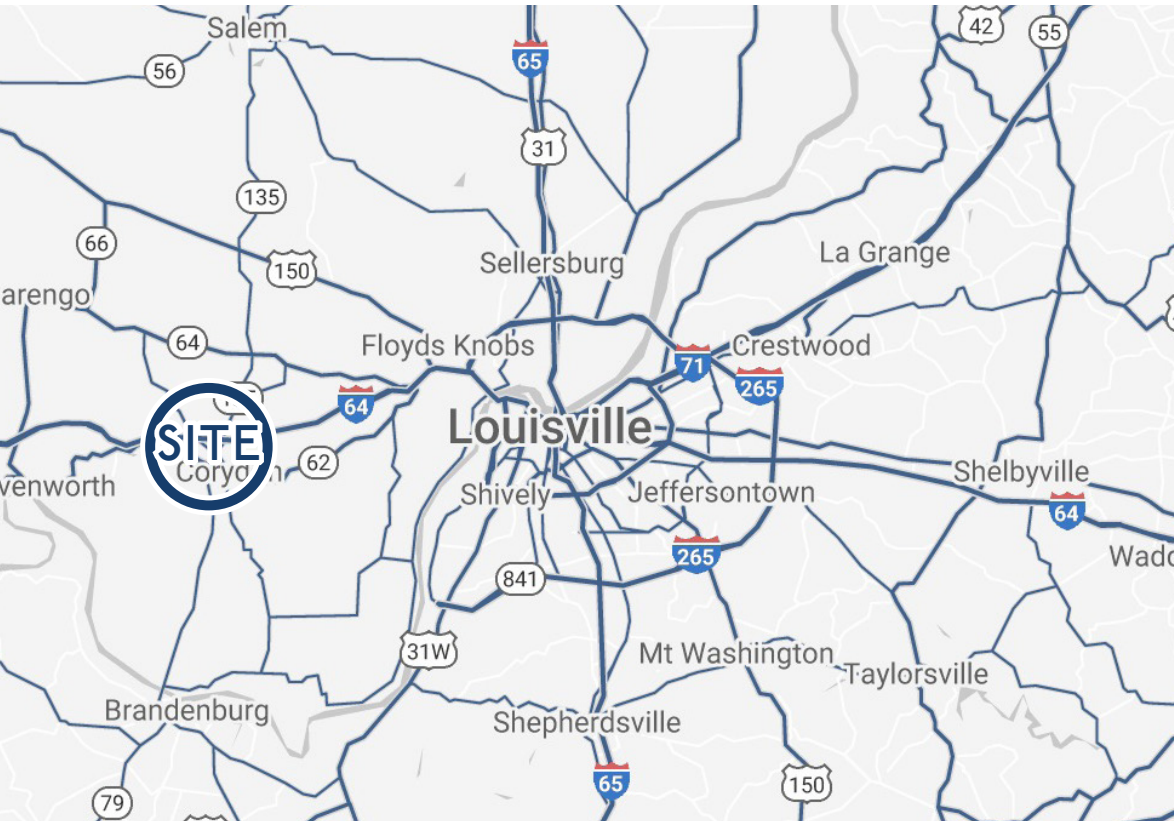
FOR LEASE

2421 LANDMARK AVENUE NORTHEAST  
CORYDON, INDIANA

HOGAN  
REAL ESTATE

# PROPERTY DESCRIPTION

2421 LANDMARK AVENUE NORTHEAST  
CORYDON, INDIANA



## Features

- + 720-2,864 ± SF contiguous retail space available within Corydon's busy commercial corridor
- + Located along I-64, just 25 minutes from downtown Louisville
- + Immediate area retailers include Walmart Supercenter, Buff City Soap, Dollar Tree, Feeder's Supply, Tractor Supply Co, and Jay C Foods
- + B-2 Zoning
- + Historic Corydon, Indiana is the county seat of Harrison County Indiana



**720 - 2,864 ± SF**  
**INLINE RETAIL SPACE**  
available for lease



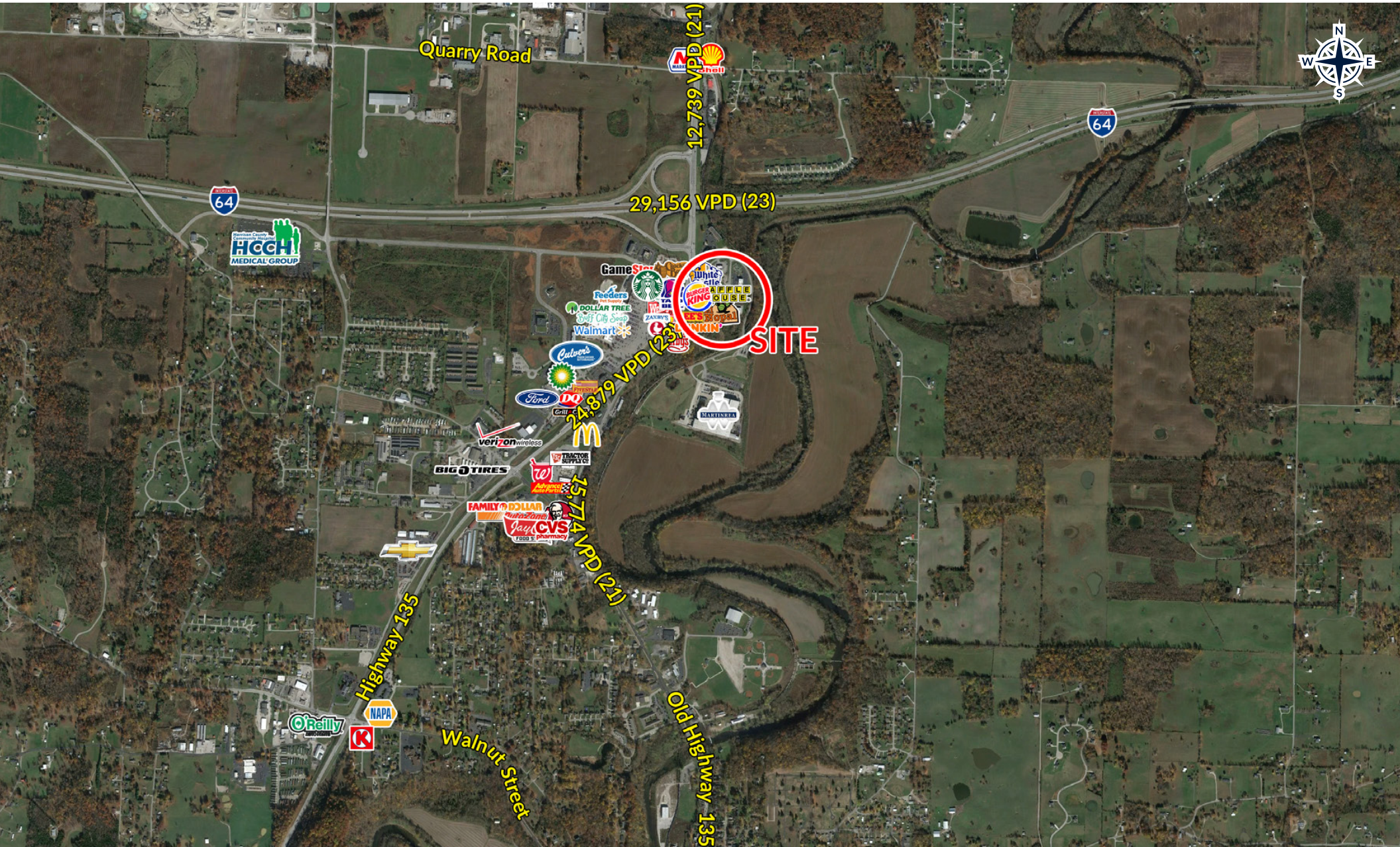
**24,879**  
**VEHICLES PER DAY**  
in front of site

## Demographics

	5 Mile	10 Miles	15 Miles
Population	14,306	35,035	80,147
Average Household Income	\$86,858	\$94,181	\$96,550

# TRADE AREA AERIAL

2421 LANDMARK AVENUE NORTHEAST  
CORYDON, INDIANA



# IMMEDIATE AREA AERIAL

2421 LANDMARK AVENUE NORTHEAST  
CORYDON, INDIANA



# SITE PLAN

2421 LANDMARK AVENUE NORTHEAST  
CORYDON, INDIANA





# HOGAN REAL ESTATE

PROPERTY CONTACT

**JIM CONKLIN**

D: 502.271.5817

C: 812.972.3259

M: 502.426.1050

F: 502.426.1223

[jconklin@hogandev.com](mailto:jconklin@hogandev.com)