



BUY. MANAGE. SELL.

S O U T H E A S T E R N M A N A G E M E N T G R O U P

presents:

475

LONG POINT ROAD



INDUSTRIAL FOR LEASE

GREAT LOCATION NEXT TO THE WANDO PORT

- ▲ Available Space 20,695 sf \$10.60 psf + NNN \$18,280.58 / month
- ▲ 19,195 SF of Warehouse Space with 1,500 SF of 2nd Floor Office Space. Approximately 40% of the Warehouse is Climate Controlled.
- ▲ 2 Roll-Up Loading Doors, 1 Loading Dock, & 3 Phase Power.

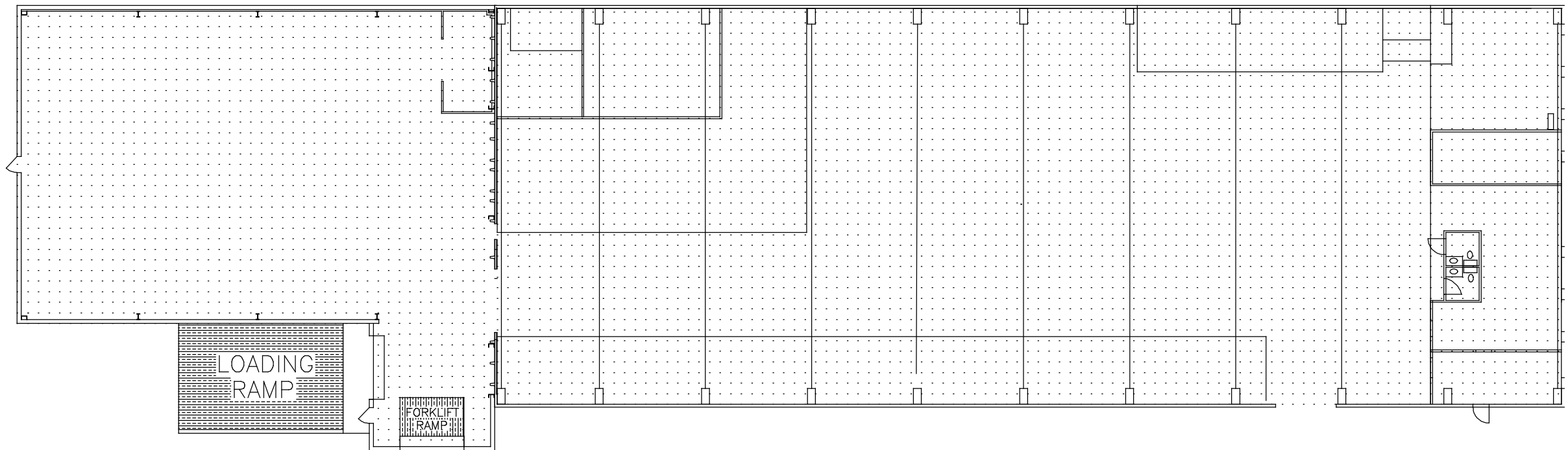
contact:

Chad Yonce, CCIM, CPM
843.343.1923
yonce@semgsc.com

Bryan Perrucci, CCIM
843.343.1921
perrucci@semgsc.com

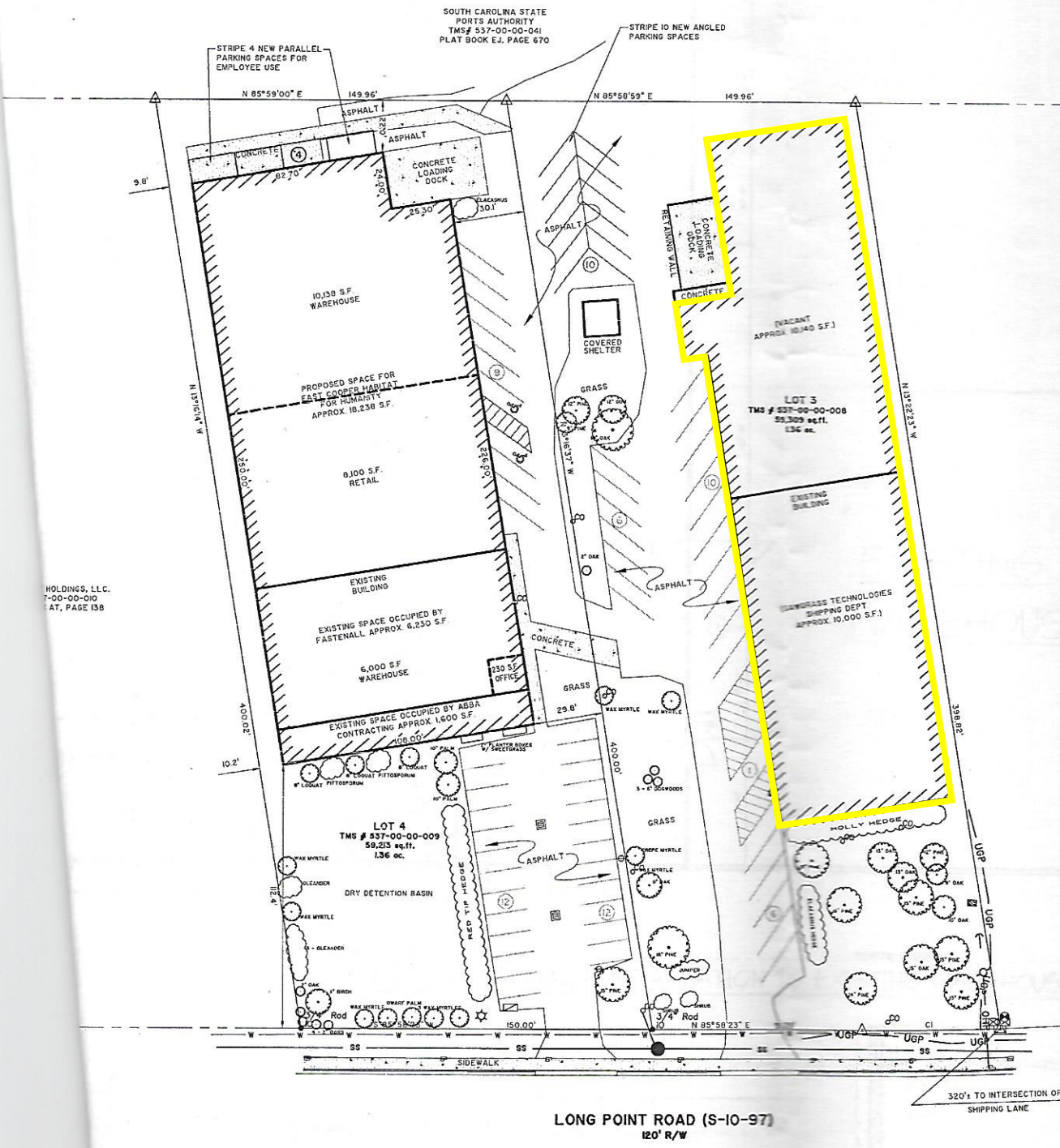
151 King Street
Charleston, SC 29401

www.semgsc.com



<div>Multiplastics[®]</div> <div>Creativity in Plastics Since 1952</div> <div>A Division of CLIRD ENTERPRISES, INC.</div>			
BUILDING 1			
DRAWN		DATE	
CAD FILE NAME		BLDG1	
REV		<div></div>	
SIZE	C	SCALE	1/16:1'
SHEET		1 of 1	

CURVE	LENGTH	CHORD
C1	59.15'	N 84°



HOLDINGS, LLC.
7-00-00-010
AT, PAGE 138

WITHERS ENTERPRISES, LLC.
TMS# 537-00-00-008
PLAT BOOK AT, PAGE 138