

# 350 Houbolt Road Joliet, Illinois

20,00 SF  
General  
Office Space  
Available



Christine Simek  
630.473.5070

[christine@xroadsadvisors.com](mailto:christine@xroadsadvisors.com)

## Introduction



Become a part of the vibrant Joliet business community at the 350 Houbolt Office Building! With more than 20,000 square feet of contemporary office space in a prime location, we have the perfect environment to support your business and foster its growth.

# Building Features

- Suites Available:
  - Suite 100: 1,584 SF
    - Features 3 private offices with open area for collaborative workspace and 1 storage room
  - Suite 201: 1,463 SF
    - Features 2 private offices, large open area for reception & work stations, floor to ceiling glass door entrance, located just off of the lobby
  - Suite 203: 234 SF
    - Single executive office with window to marble lobby
  - Suite 208: 249 SF
    - Single executive office with exterior windows
  - Suite 214: 848 SF
    - Features reception/waiting room with 1 large office
- Masonry construction and beautiful marble lobby
- ADA Lift Access
- Public transportation available in front of the building
- Monument signage
- Located near a variety of restaurants, shopping areas, as well as Joliet Community College
- Convenient ramp access to I-55 and I-80



# Exterior Photos

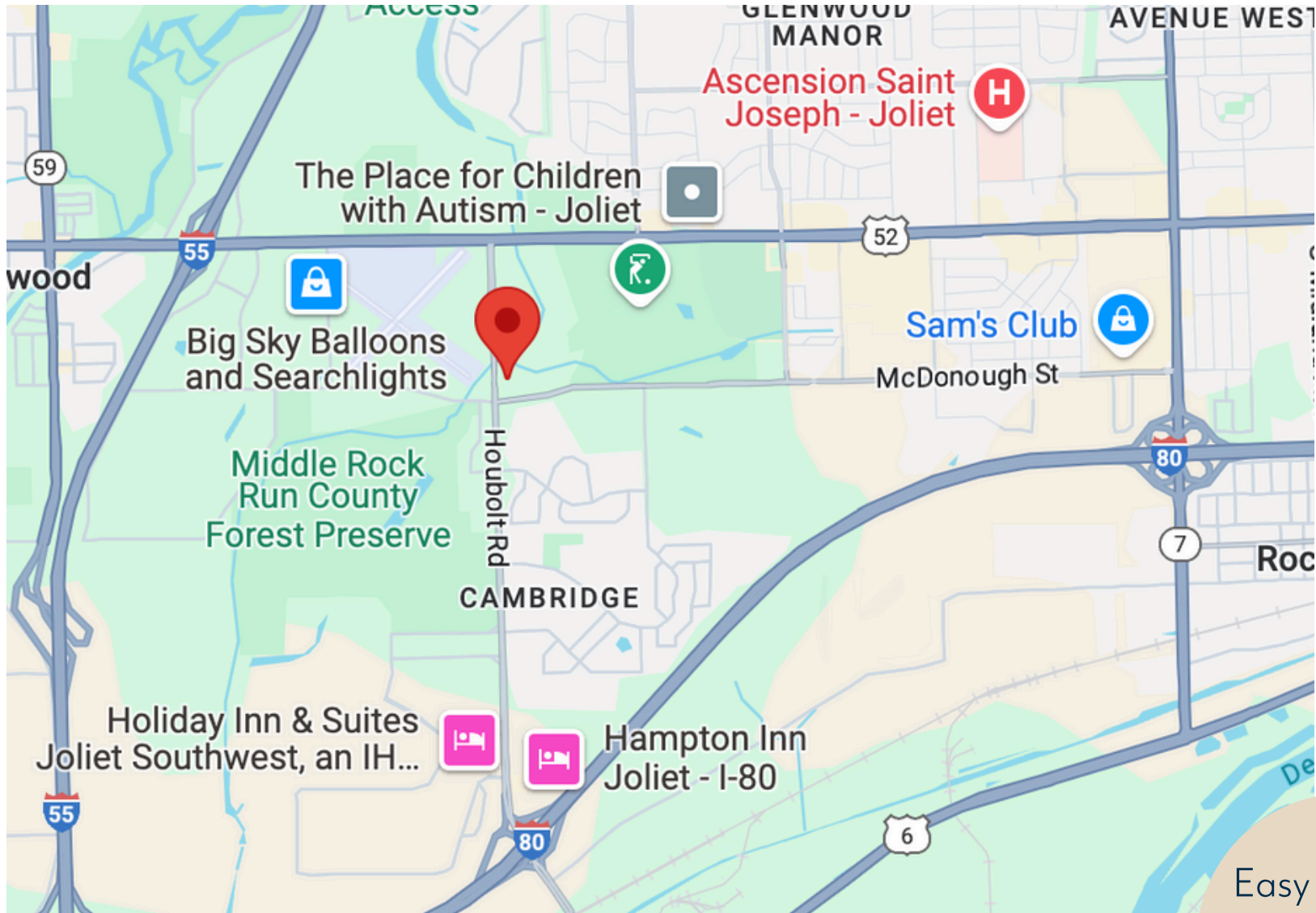




# Interior Photos

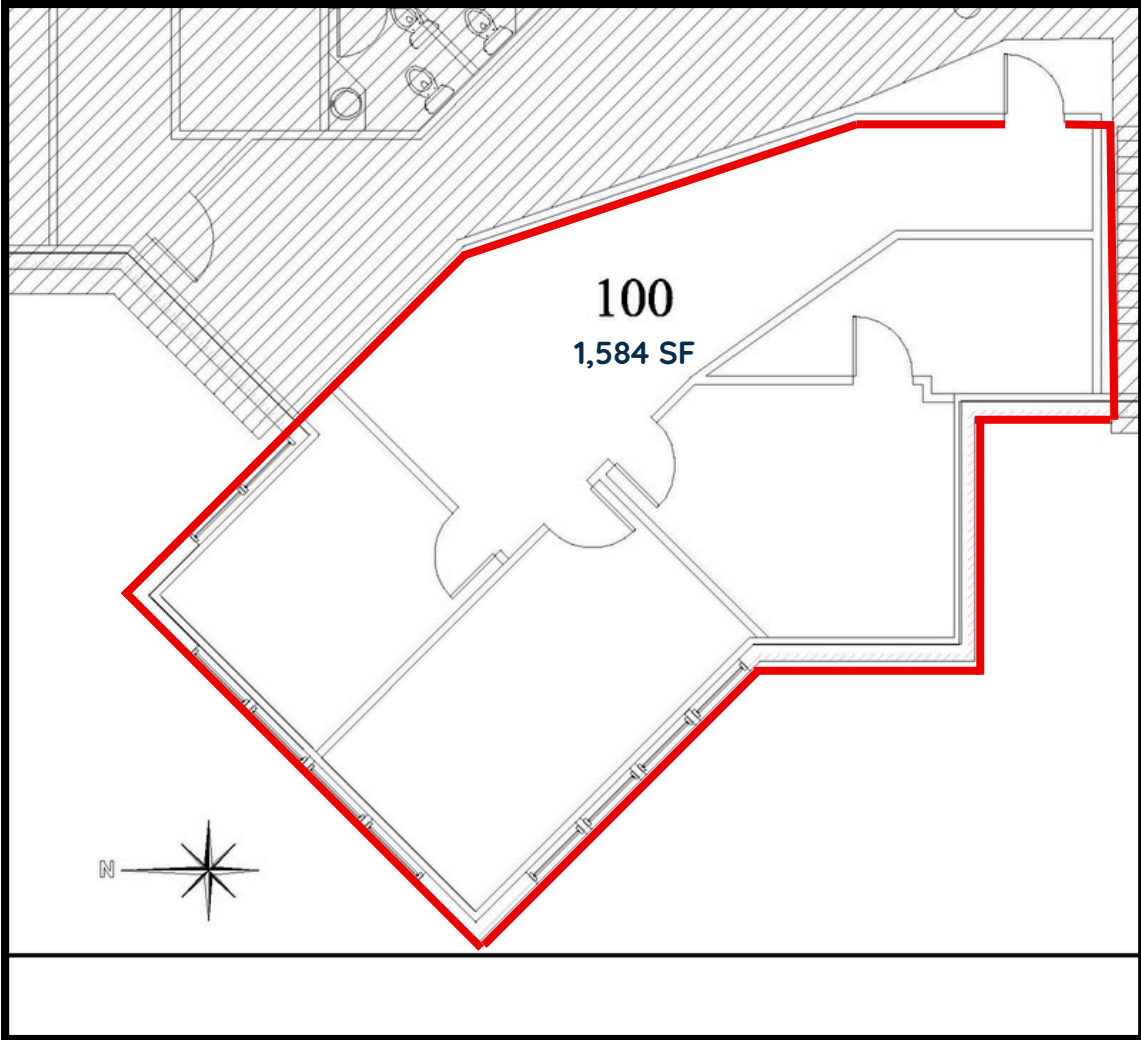


# Location



Easy access to  
I-55 and  
I-80

# Floor Plan: Suite 100





# Interior Photos Suite 201

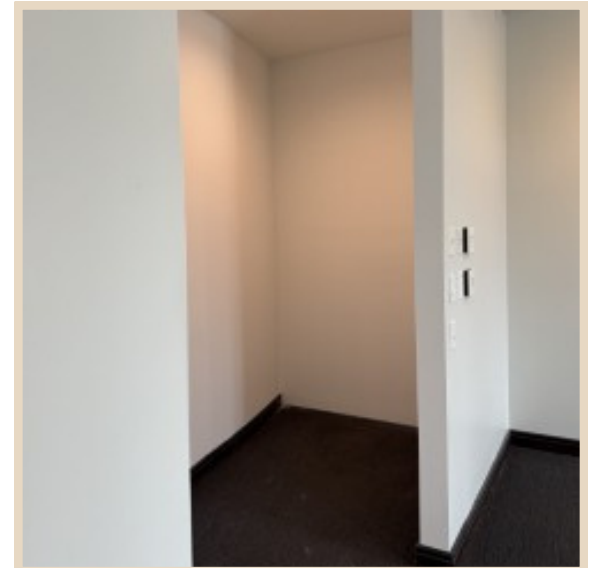
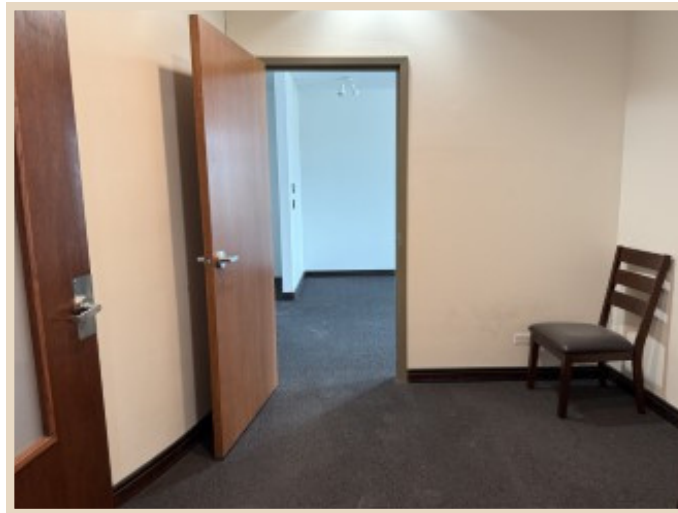




# Interior Photos Suite 203

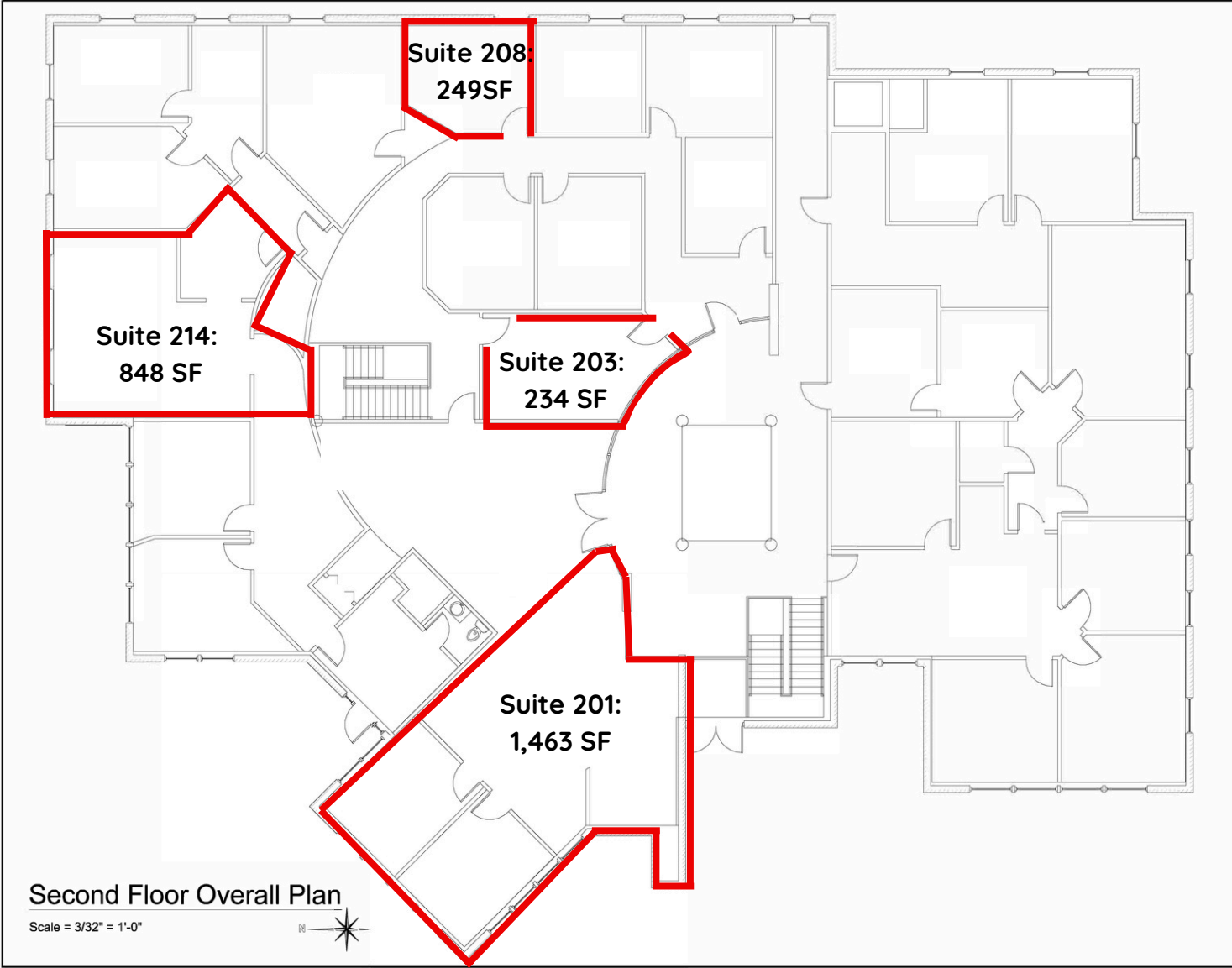


# Interior Photos Suite 214





# Floor Plan: 2nd Floor





350 Houbolt Road  
Joliet, Illinois



Christine Simek  
630.473.5070

[christine@xroadsadvisors.com](mailto:christine@xroadsadvisors.com)