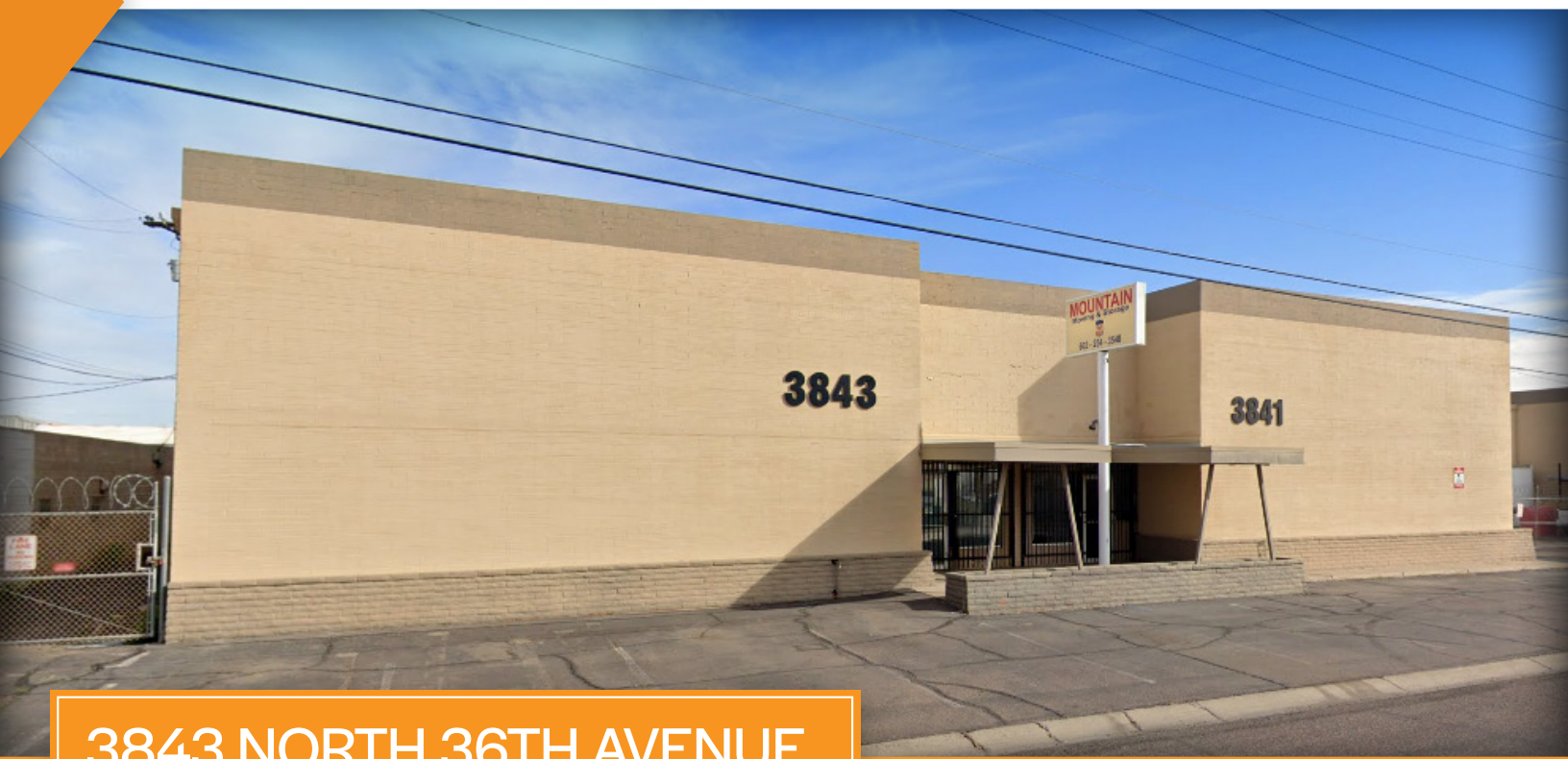


FOR LEASE



3843 NORTH 36TH AVENUE
PHOENIX, ARIZONA 85019

PROPERTY OVERVIEW

- 5,000 Square Feet @ \$0.89 per Square Foot
- +/- 16' Clear Height
- A-2 Zoning, City of Phoenix
- 3843 - 150 Amps, Single Phase Power
- Reception, Office, Work Station, 2 Restrooms, & Warehouse



Chad Kirkorsky

Partner

480.330.2824

chad@citywidecre.com

Jahnay Finklea

Sales & Leasing

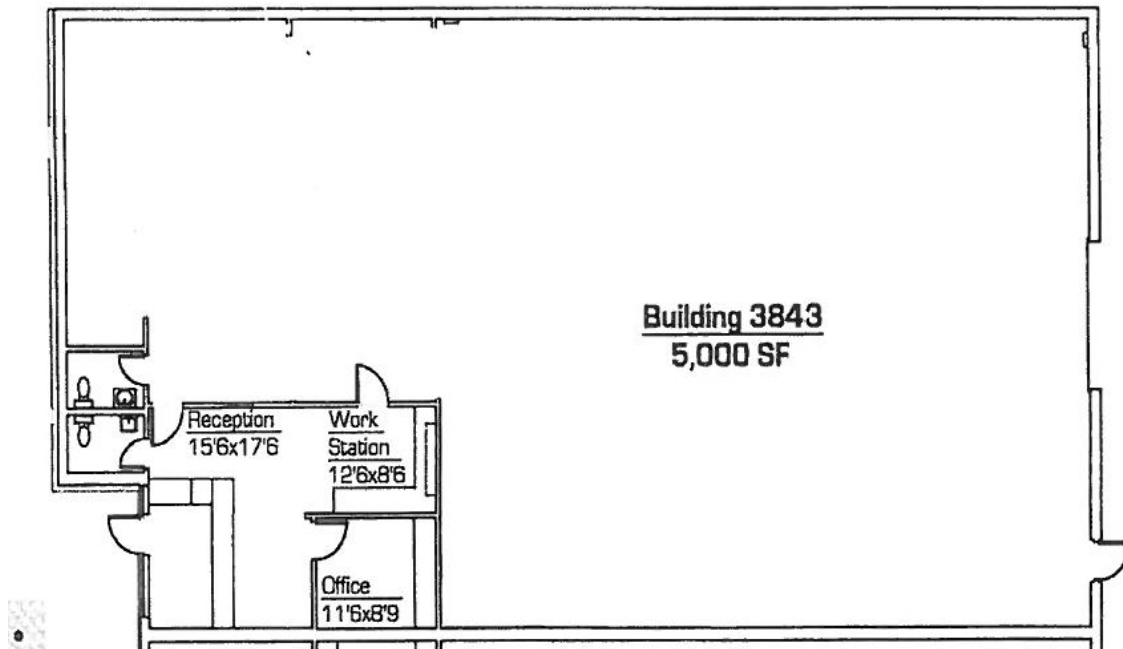
602.487.7291

jahnay@citywidecre.com

All information furnished is from sources deemed reliable. No representation is made as to the accuracy thereof and it is submitted subject to errors, omissions, changes, or withdrawal without notice and to any special listings conditions, including the rate and manner of payment of commissions for particular offerings imposed by principals or agreed to by the company, the terms of which are available to interested principals or brokers. All dimensions are approximate. Owner and/or Broker make no representations expressed or implied as to the accuracy of floor plan/site plan dimensions.

citywide
COMMERCIAL REAL ESTATE

FOR LEASE



FOR MORE INFORMATION

Chad Kirkorsky

Partner

480.330.2824

chad@citywidecre.com

Jahnay Finklea

Sales & Leasing

602.487.7291

jahnay@citywidecre.com

2122 East Highland Avenue, Suite 225
Phoenix, Arizona 85016
602.313.1000 • citywidecre.com