

FOR LEASE

7371 Utica Boulevard

Lowville, New York 13367



Space For Lease

Approximate plot lines subject to verification of survey.

1,500± SF for Lease

Property Highlights

- Great visibility on the main traffic corridor in Lowville and Lewis County
- Convenient location
- Busy commercial corridor

Demographic	3 Mile	5 Miles	10 Miles
Population	4,897	6,941	13,835
Households	2,054	2,691	5,323
Average H.H. Income	\$76,832	\$76,410	\$72,870
Daytime Employees	4,367	4,801	6,459
Source: ESRI Business Analyst 2021			



Traffic Counts

Utica Boulevard	6,097 AADT
South State Street	11,568 AADT

Source: NYS DOT 2019

Contact

JOYCE MAWHINNEY MACKNIGHT
Associate Real Estate Salesperson
+1 315 445 8514
jmacknight@pyramidbrokerage.com

CHRISTOPHER D. CLARK
Real Estate Salesperson
+1 315 408 6299
cclark@pyramidbrokerage.com

5845 Widewaters Pkwy, Suite 200
East Syracuse, New York 13057
+1 315 445 1030
pyramidbrokerage.com

FOR LEASE

7371 Utica Boulevard | Lowville, New York

CUSHMAN &
WAKEFIELD

Pyramid Brokerage
Company

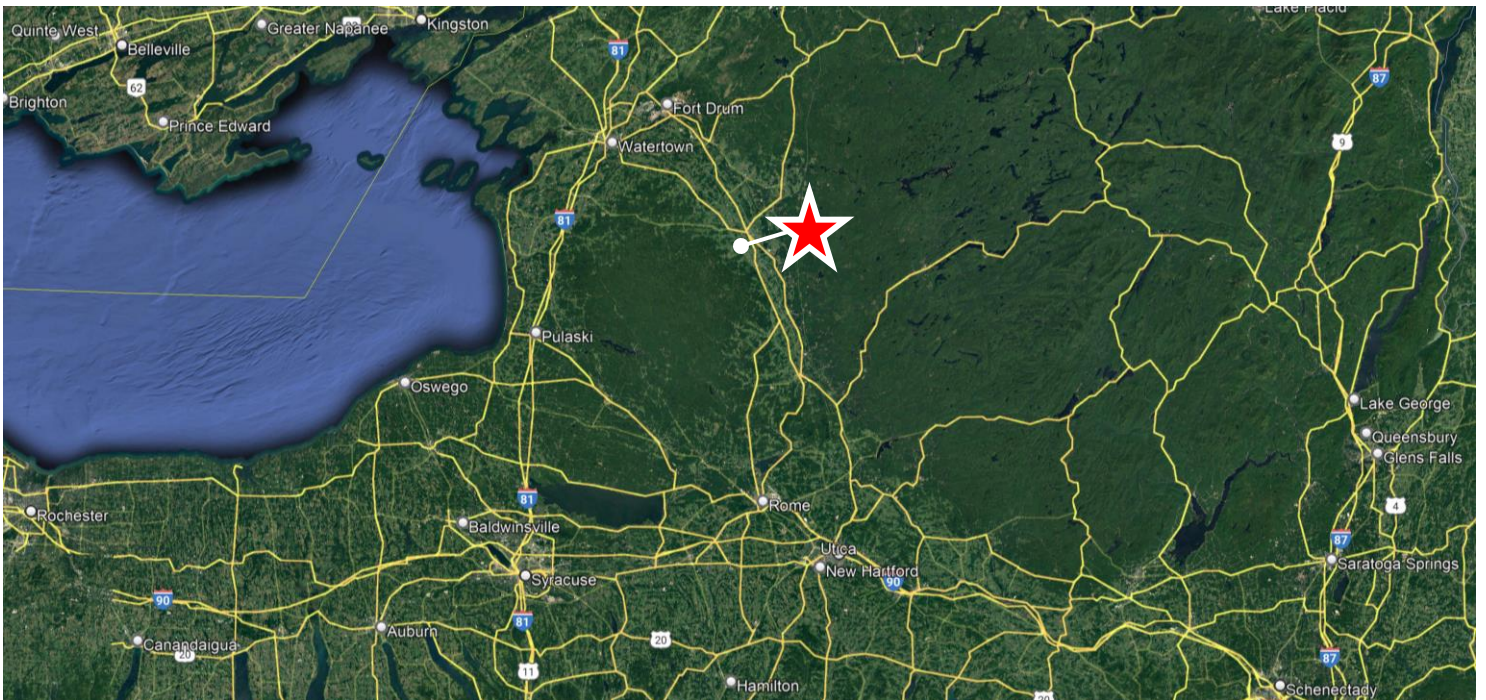
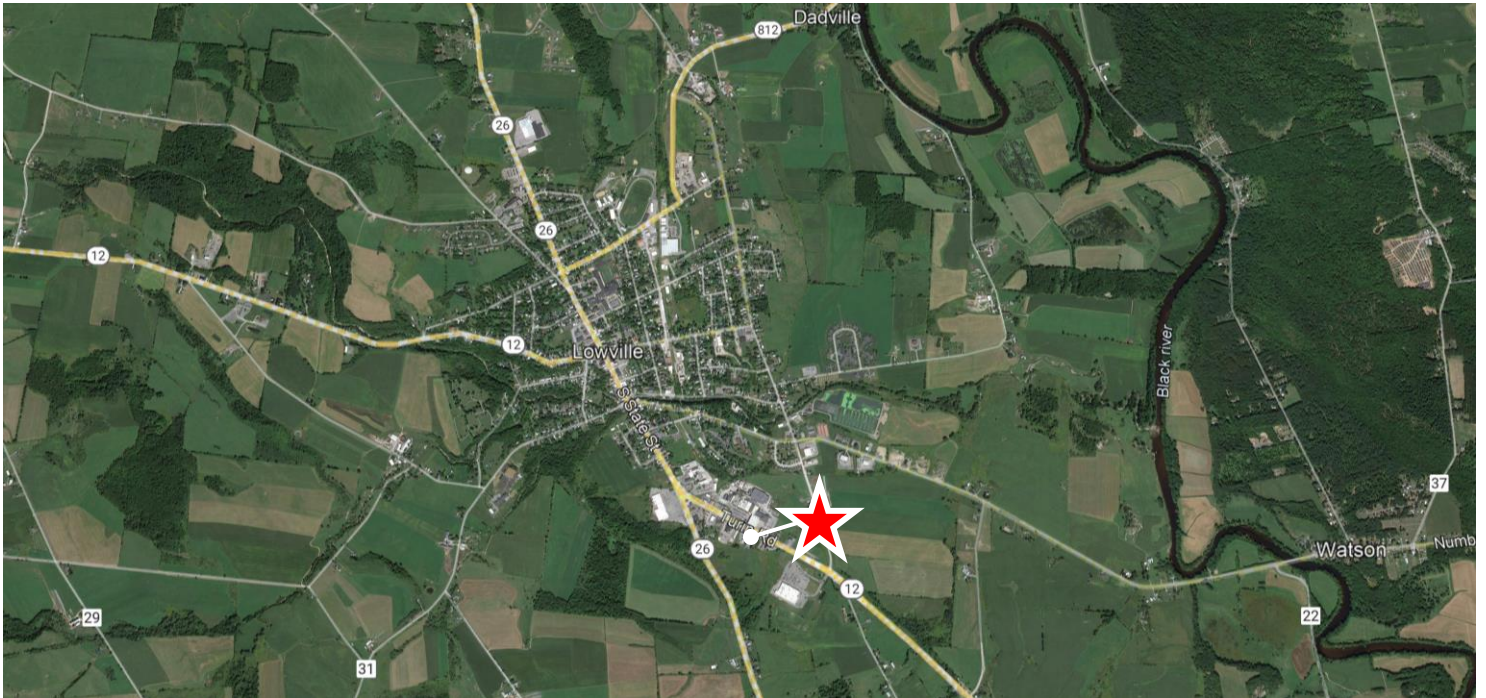


Independently Owned and Operated / A Member of the Cushman & Wakefield Alliance

Cushman & Wakefield Copyright 2022. No warranty or representation, express or implied, is made to the accuracy or completeness of the information contained herein, and same is submitted subject to errors, omissions, change of price, rental or other conditions, withdrawal without notice, and to any special listing conditions imposed by the property owner(s). As applicable, we make no representation as to the condition of the property (or properties) in question.

FOR LEASE

7371 Utica Boulevard | Lowville, New York



Independently Owned and Operated / A Member of the Cushman & Wakefield Alliance

Cushman & Wakefield Copyright 2022. No warranty or representation, express or implied, is made to the accuracy or completeness of the information contained herein, and same is submitted subject to errors, omissions, change of price, rental or other conditions, withdrawal without notice, and to any special listing conditions imposed by the property owner(s). As applicable, we make no representation as to the condition of the property (or properties) in question.