

## Caliber Park

14201 Caliber Drive, Oklahoma City, OK 73134



### NORTH - SUITE 230 HIGHLIGHTS

- Large executive corner office
- 2 private, window offices
- Work/file room
- 2 interior private office
- Open space for Modular furniture
- Ample surface parking
- On-site building engineer
- Easy access to main thoroughfares
- Locally owned

### LOCATION DESCRIPTION

Conveniently located in the prestigious Quail Springs Corporate Park, Caliber Park is within walking distance of numerous restaurants and retailers along May Avenue. The property is also in close proximity to the Hefner Parkway and the Kilpatrick Turnpike.

### NORTH - SUITE 210

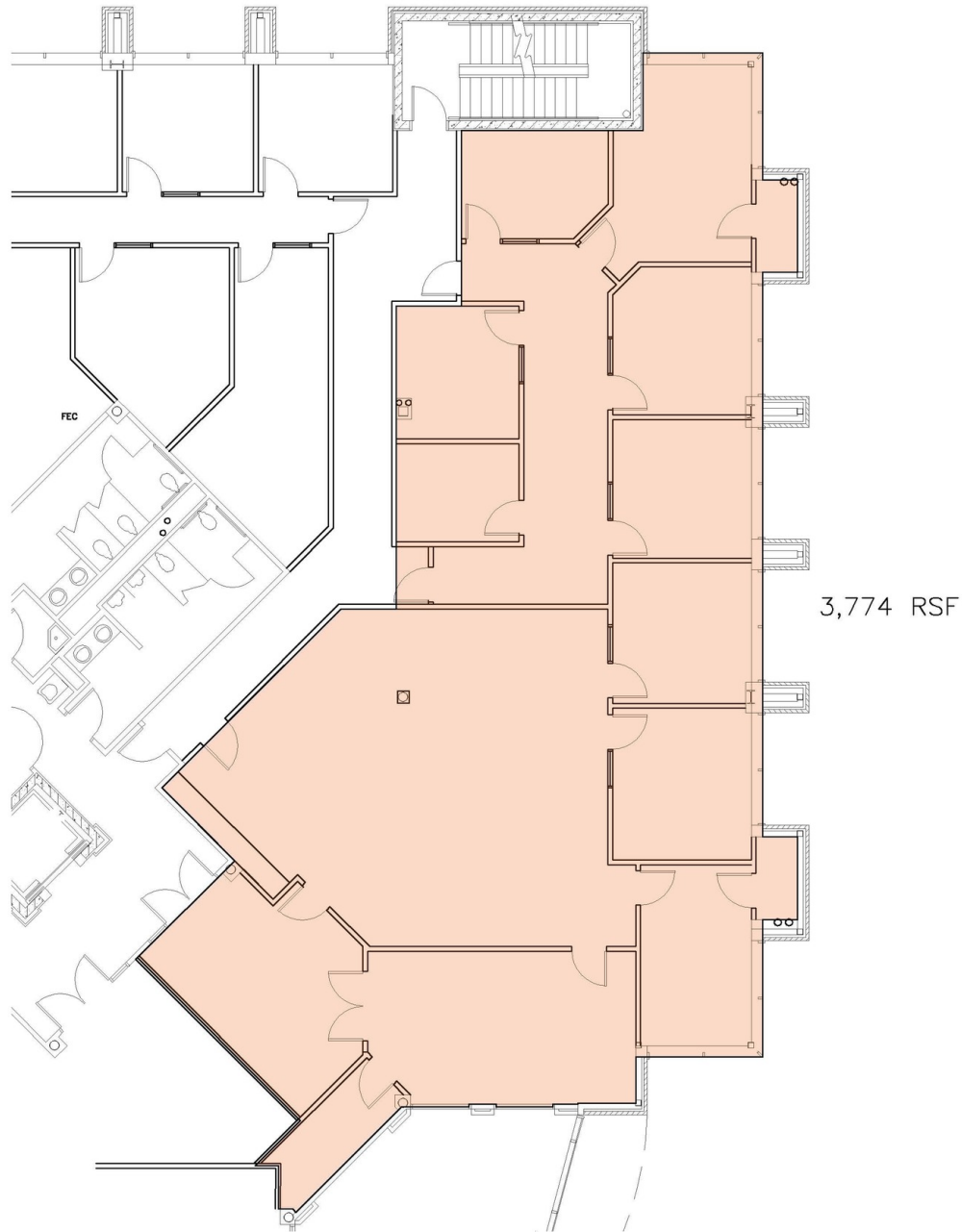
Available SF:	3,774 SF
Lease Rate:	Negotiable
Lease Type:	Full Service
Building Size:	82,722 SF
Submarket:	Northwest

**TRE DUPUY**  
405.239.1210  
tdupuy@pricedwards.com  
pricedwards.com

**IAN SELF**  
405.239.1271  
iself@pricedwards.com  
pricedwards.com

## Caliber Park

14201 Caliber Drive, Oklahoma City, OK 73134



CALIBER PARK NORTH  
SUITE 210 / 230

**TRE DUPUY**  
405.239.1210  
tdupuy@priceedwards.com  
priceedwards.com

**IAN SELF**  
405.239.1271  
iself@priceedwards.com  
priceedwards.com