

FOR SALE
14,656 SF



416 MILLSTONE DRIVE

HILLSBOROUGH, NC

ASKING PRICE | \$2,950,000



**CUSHMAN &
WAKEFIELD**

PROPERTY HIGHLIGHTS

416 Millstone Drive is a single-story industrial building for sale in Hillsborough, NC. Features excellent access to I-40 and I-85 and located 40 minutes from Raleigh, NC. Perfect for an owner occupant.

Address: 416 Millstone Drive, Hillsborough, North Carolina 27278

County: Orange

Building Size: 14,656 SF which includes approximately 2,000 SF of office

Acres: 2.32

Year Built: 1999

Year Renovated: 2008

Parking: 32 surface parking spaces

Dock: one (1) dock-high, one (1) grade level

HVAC: 100% conditioned

Sprinklers: 100% sprinklered

Ceiling Height: 13' – 22'

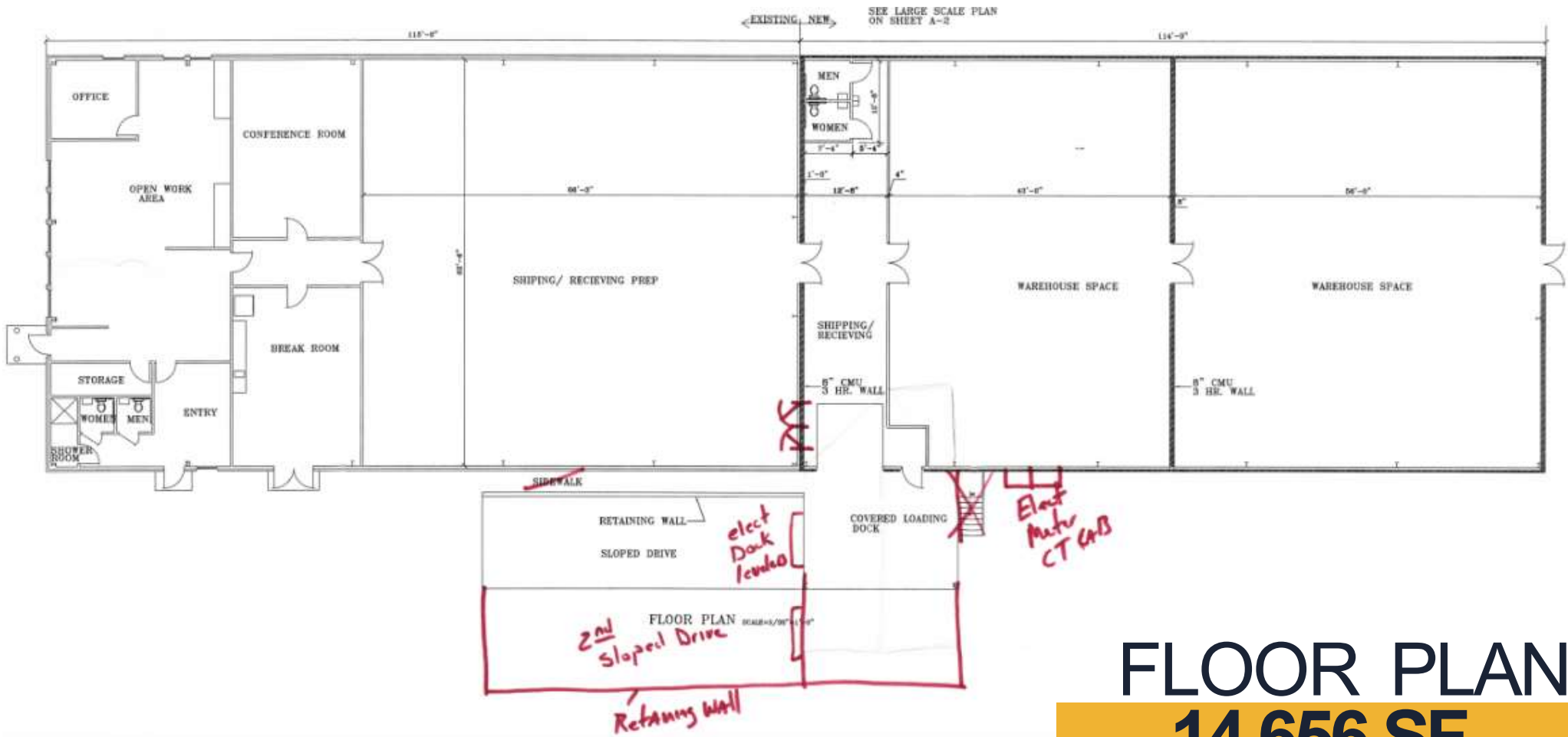
Column Spacing: No columns

Zoning: EDD, Economic Development District

Water & Sewer: Town of Hillsborough

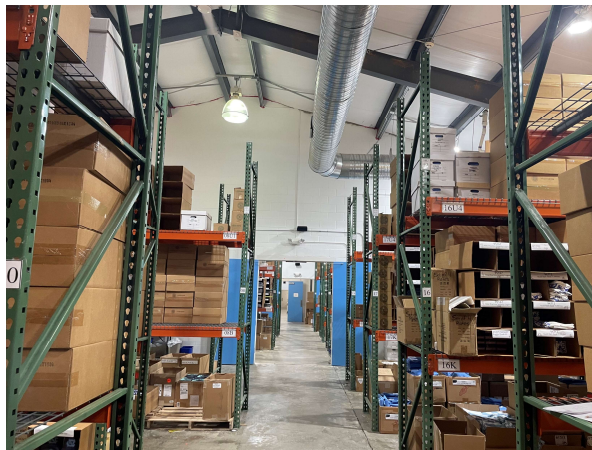
Asking Price: \$2,950,000

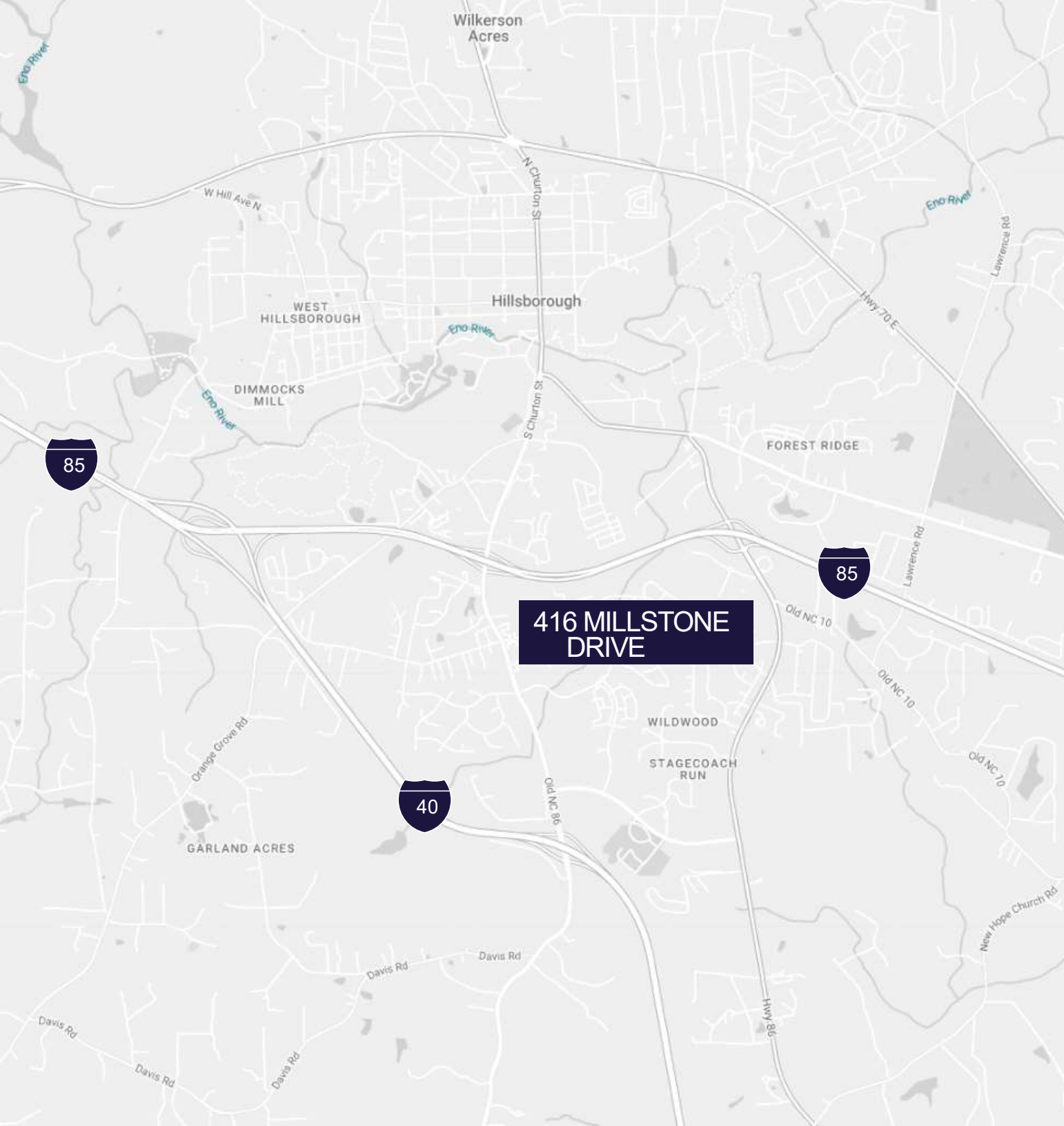




FLOOR PLAN

14,656 SF





**416 MILLSTONE
DRIVE**

1 MILE

TO INTERSTATE 85

1.4 MILES

TO INTERSTATE 40

3.1 MILES

TO HIGHWAY 70

15.5 MILES

TO DURHAM

36.8 MILES

TO RALEIGH

41.1 MILES

TO GREENSBORO

CONTACT INFORMATION

JOHN HIGH

john.high@cushwake.com

+1 919 812 6192

©2020 Cushman & Wakefield. All rights reserved. The information contained in this communication is strictly confidential. This information has been obtained from sources believed to be reliable but has not been verified. NO WARRANTY OR REPRESENTATION, EXPRESS OR IMPLIED, IS MADE AS TO THE CONDITION OF THE PROPERTY (OR PROPERTIES) REFERENCED HEREIN OR AS TO THE ACCURACY OR COMPLETENESS OF THE INFORMATION CONTAINED HEREIN, AND SAME IS SUBMITTED SUBJECT TO ERRORS, OMISSIONS, CHANGE OF PRICE, RENTAL OR OTHER CONDITIONS, WITHDRAWAL WITHOUT NOTICE, AND TO ANY SPECIAL LISTING CONDITIONS IMPOSED BY THE PROPERTY OWNER(S). ANY PROJECTIONS, OPINIONS OR ESTIMATES ARE SUBJECT TO UNCERTAINTY AND DO NOT SIGNIFY CURRENT OR FUTURE PROPERTY PERFORMANCE.

