

FOR LEASE MULTI-TENANT INDUSTRIAL

KPA
COMMERCIAL

1400 ORCHARD ROAD
HOLLISTER, CA



PROPERTY SUMMARY

- Size: +10,000 to 60,000 SF warehouse space
- Zoning: AP with a M1 overlay AG productive Light industrial district* to be verified
- Power: 1,200 amps of heavy 240v-480v, 3-phase power
- Yard space available +2 acres of divisible yard space either paved, gravel rock, or dirt with the option for private secured fencing
- Warehouse clear height of 20', fully sprinklered, equipped with new LED light fixtures.
- Five (5) grade level roll up doors each approximately 12' x 14', two (2) loading docks
- Easy access to Highway 156/152
- Please call to tour
- Rate: \$1 per SF, gross

Kevin Peixoto
KPA Commercial, Inc.
408.898.0177
CaLDRE No. 01411086
kevin@kpacommercial.com

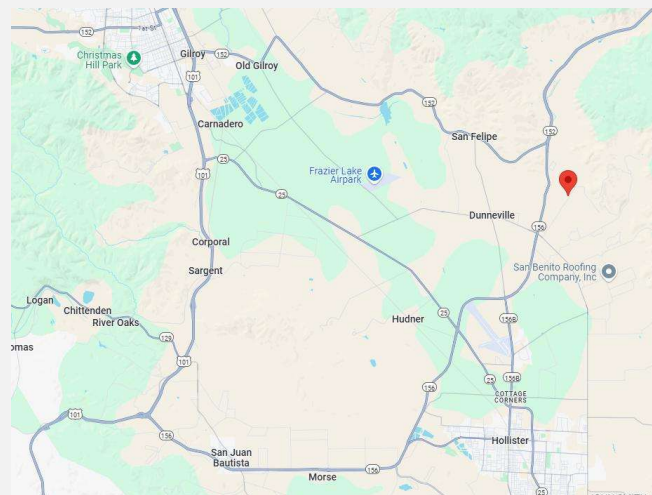
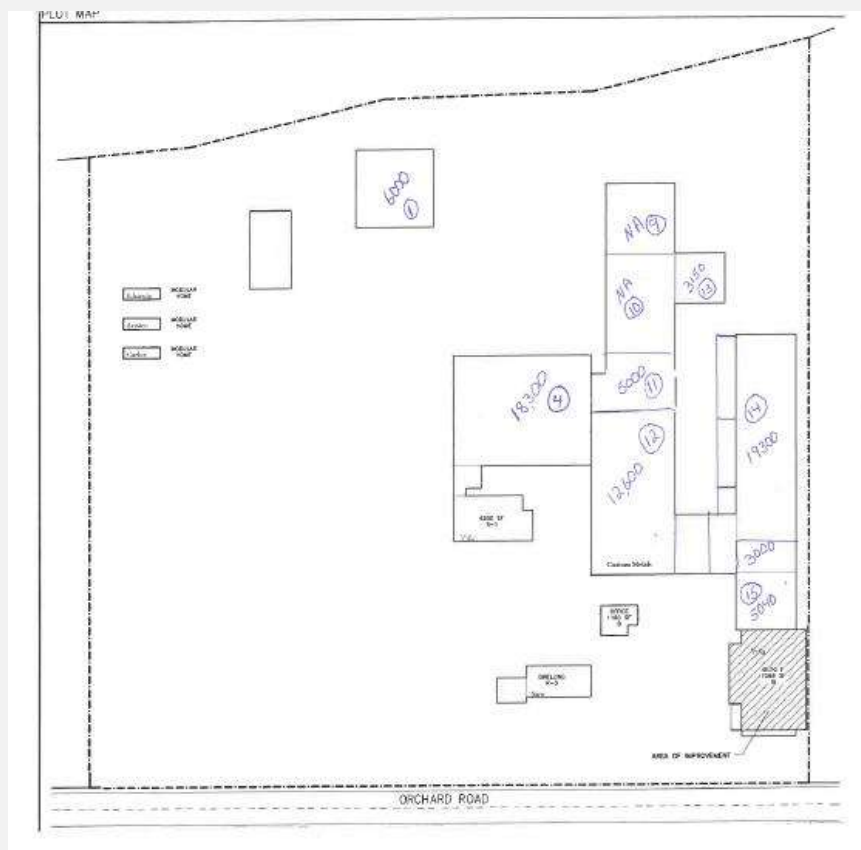
KPACOMMERCIAL.COM

The information contained herein was obtained from sources believed reliable; however, KPA Commercial, Inc. and its agents make no guarantee, warranty or representation, either expressed or implied, as to the completeness or accuracy thereof. The presentation of this property is submitted subject to errors, omissions, change of price, statements of income and expenses or conditions prior to sale or lease, or withdrawal without notice. Prospective Tenants and Buyers should consult their accountant, legal counsel or other professional advisor.

FOR LEASE MULTI-TENANT INDUSTRIAL

KPA
COMMERCIAL

1400 ORCHARD ROAD
HOLLISTER, CA



*Not to Scale

Kevin Peixoto
KPA Commercial, Inc.
408.898.0177
CalDRE No. 01411086
kevin@kpacommercial.com

KPACOMMERCIAL.COM

The information contained herein was obtained from sources believed reliable; however, KPA Commercial, Inc. and its agents make no guarantee, warranty or representation, either expressed or implied, as to the completeness or accuracy thereof. The presentation of this property is submitted subject to errors, omissions, change of price, statements of income and expenses or conditions prior to sale or lease, or withdrawal without notice. Prospective Tenants and Buyers should consult their accountant, legal counsel or other professional advisor.