



HAGGERTY CORRIDOR CORPORATE PARK

ONE-OF-A-KIND SINGLE-TENANT BUILDING IN THIS SIZE RANGE!

29050 CABOT DRIVE, NOVI, MICHIGAN 48377

18,692 SF (+/- 11,000 SF OFFICE / +/- 7,000 SF WAREHOUSE)

OFFICE/R&D HQ OPPORTUNITY IN OAKLAND COUNTY'S
PREMIER OFFICE AND TECHNOLOGY PARK

PROPERTY HIGHLIGHTS



Located at cross-roads of 4 major freeways; I-696, I-275, I-96 and M-5



Sidewalks throughout park



Minutes from the Lodge Freeway, M-14 and I-75.



Parking ratio of 4.2/1,000



Single-tenant, one-story brick and glass office / research building



Exterior lit signage on building facade



Additional monument signage available



2 Grade-Level Doors



24 hour/7 day building access



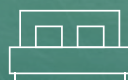
17' clear height



Starbucks at Park entrance on 12 Mile



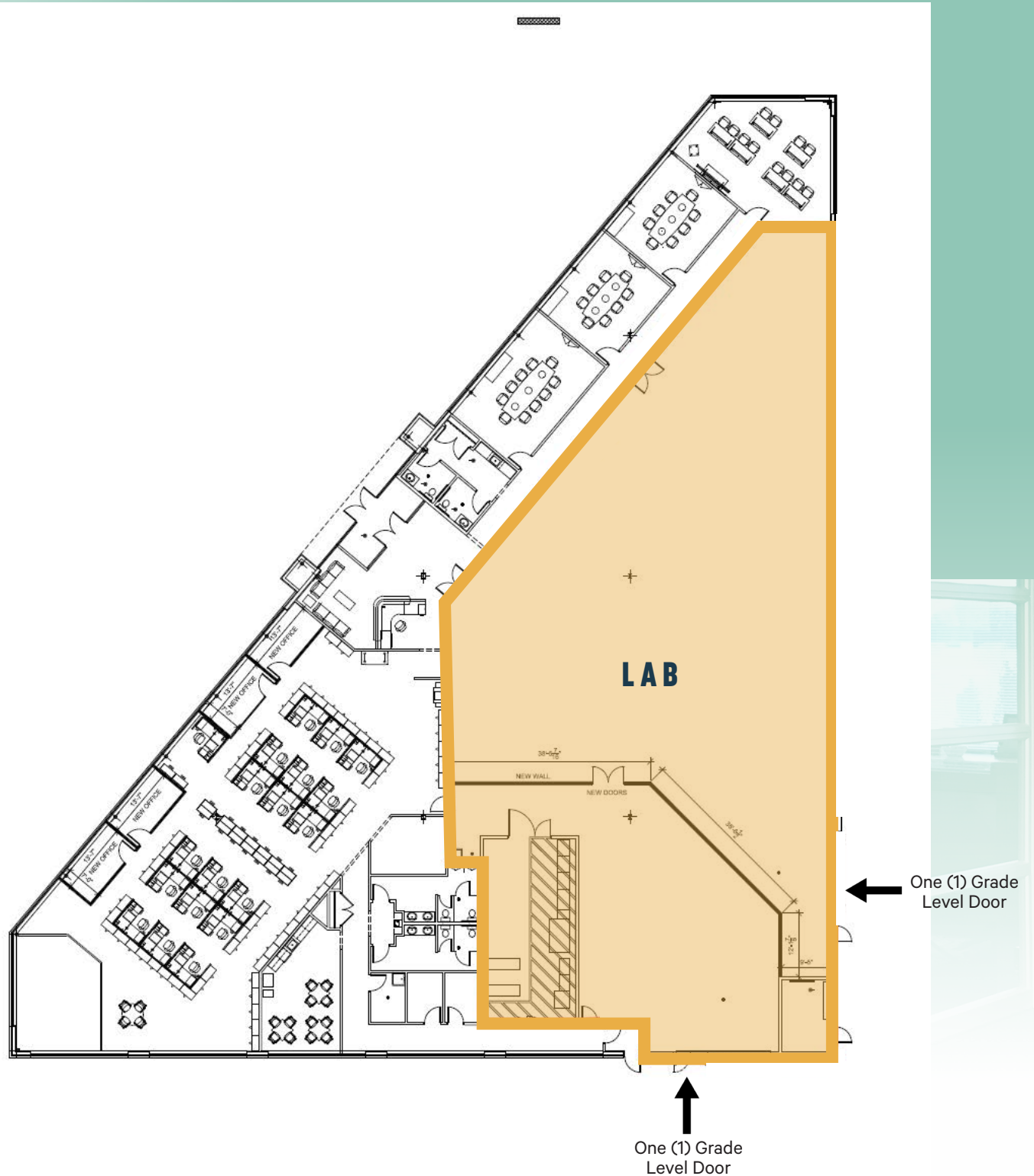
Flexibility with regards to interior build-out to best suit individual tenant needs



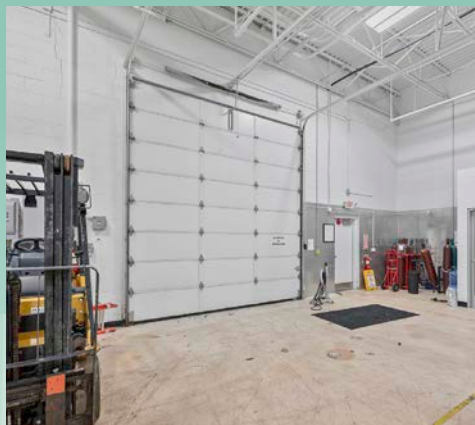
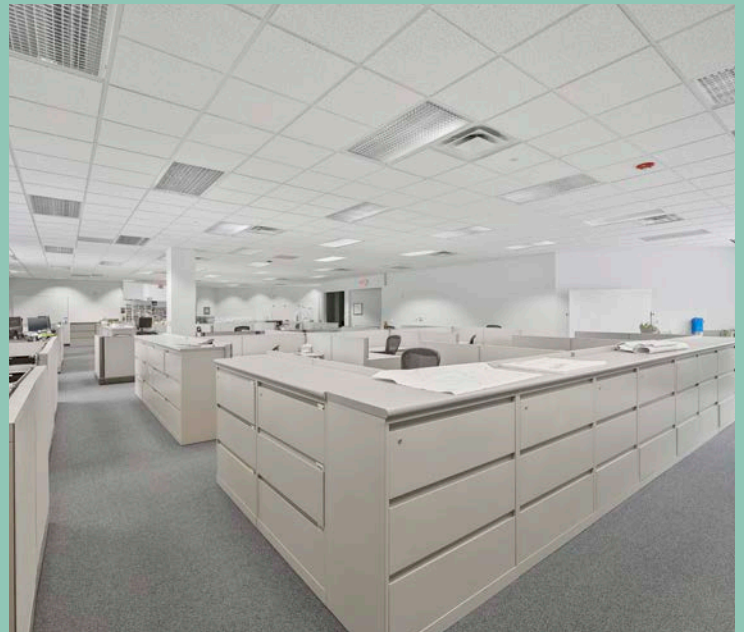
Hotel and Daycare within walking distance

18,692 SF **AVAILABLE**

TOTAL BUILDING: 18,692 SF (+/- 11,000 SF OFFICE / +/- 7,000 SF LAB)



THE BUILDING



PARK AERIAL



13 MILE



Scout

PUREM

SITE

CABOT DRIVE

HOSIDEN

Corewell Health

KEYENCE



accredo

GENTHERM

POLARIS

hanon
SYSTEMS

M5

OSRAM

rifast

HAGGERTY ROAD

ECOLAB

KEYSIGHT
TECHNOLOGIES

shape

MathWorks

PACE
INDUSTRIES

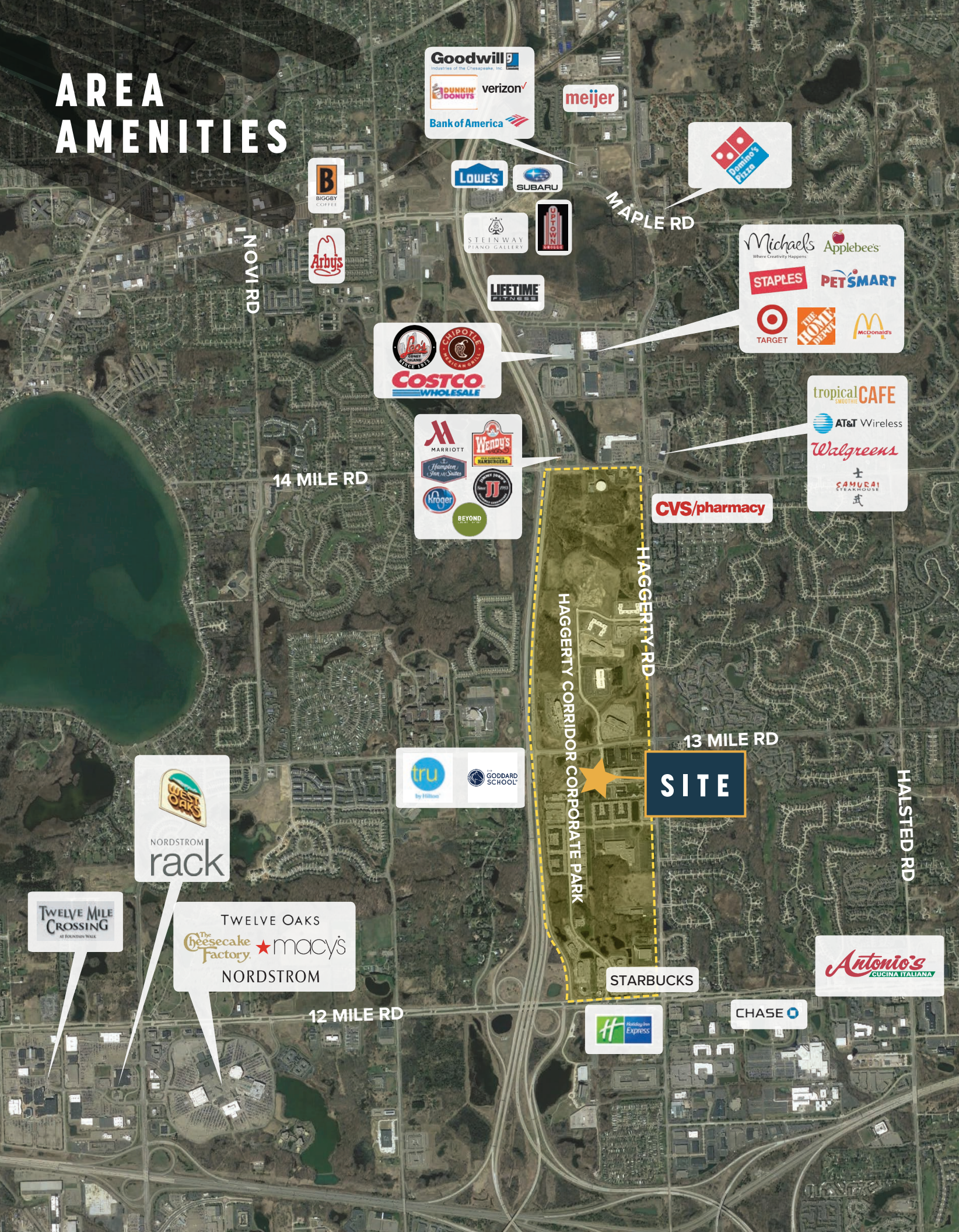
ILJIN

Henry Ford
HEALTH SYSTEM



12 MILE

AREA AMENITIES



NOV RD

MAPLE RD

14 MILE RD

HAGGERTY RD

13 MILE RD

HALSTED RD

12 MILE RD

HAGGERTY CORRIDOR CORPORATE PARK

SITE

STARBUCKS

CHASE

Goodwill
Industries of the Chesapeake, Inc.
DUNKIN' DONUTS
verizon
Bank of America

meijer

Dominos
Pizza

BIGGEY
COFFEE

LOWE'S

SUBARU

STEINWAY
PIANO GALLERY

STROZZ
BROS

LIFETIME
FITNESS

Arby's

Costco
WHOLESALE

Michaels
Where Creativity Happens
Applebee's
STAPLES
PETSMART
Target
THE HOME DEPOT
McDonald's

MARriott
Wendy's
Hampshire
Port of Seattle
Kroger
BEYOND

tropical CAFE
AT&T Wireless
Walgreens
SAMURAI
STEAKHOUSE

CVS/pharmacy

West Oaks
NORDSTROM
rack

Twelve Mile Crossing
AT FOUNTAIN WALK

Twelve Oaks
The Cheesecake Factory
★ macy's
NORDSTROM

tru
by Fillmore
GODDARD SCHOOL

Antonio's
CUCINA ITALIANA

AERIAL OVERVIEW



© 2025 CBRE, Inc. All rights reserved. This information has been obtained from sources believed reliable, but has not been verified for accuracy or completeness. Any projections, opinions, or estimates are subject to uncertainty. The information may not represent the current or future performance of the property. You and your advisors should conduct a careful, independent investigation of the property and verify all information. Any reliance on this information is solely at your own risk. CBRE and the CBRE logo are service marks of CBRE, Inc. and/or its affiliated or related companies in the United States and other countries. All other marks displayed on this document are the property of their respective owners. Photos herein are the property of their respective owners and use of these images without the express written consent of the owner is prohibited. PMStudio_February2022



CONTACT US

EDWARD WUJEK

Vice Chairman

+1 248 351 2058

edward.wujek@cbre.com

KELLY CUBBIN

Vice President

+1 248 936 6852

kelly.cubbin@cbre.com

© 2025 CBRE, Inc. All rights reserved. This information has been obtained from sources believed reliable, but has not been verified for accuracy or completeness. Any projections, opinions, or estimates are subject to uncertainty. The information may not represent the current or future performance of the property. You and your advisors should conduct a careful, independent investigation of the property and verify all information. Any reliance on this information is solely at your own risk. CBRE and the CBRE logo are service marks of CBRE, Inc. and/or its affiliated or related companies in the United States and other countries. All other marks displayed on this document are the property of their respective owners. Photos herein are the property of their respective owners and use of these images without the express written consent of the owner is prohibited. PMStudio_February2022

CBRE



NORTHERN EQUITIES
GROUP