

# 901 S 17th St

901 S 17th St, Manitowoc, WI 54220



Presented By:  
Choice Commercial Real Estate, LLC



# 901 S 17th St

901 S 17th St, Manitowoc, WI 54220

## Property Details

100,000 square foot warehousing property is located in Manitowoc's urban industrial area. Ceiling heights range from 14ft to 22ft. There are both overhead ground floor and also loading docks for truck loading and unloading. There is some office space in the building as well. Property could be purchased. Call for details.

**Price: \$3.50 /SF/YR**

- Located in Industrial Zoned Area
- Easy in and out with loading docks or ground level loading as well.

View the full listing here: <https://www.loopnet.com/Listing/901-S-17th-St-Manitowoc-WI/8111773/>

Rental Rate:	\$3.50 /SF/YR
Min. Divisible:	10,000 SF
Property Type:	Industrial
Property Subtype:	Warehouse
Rentable Building Area	100,000 SF
:	
Year Built:	1950
Rental Rate Mo:	\$0.29 /SF/MO

# 901 S 17th St

901 S 17th St, Manitowoc, WI 54220

## Listing space

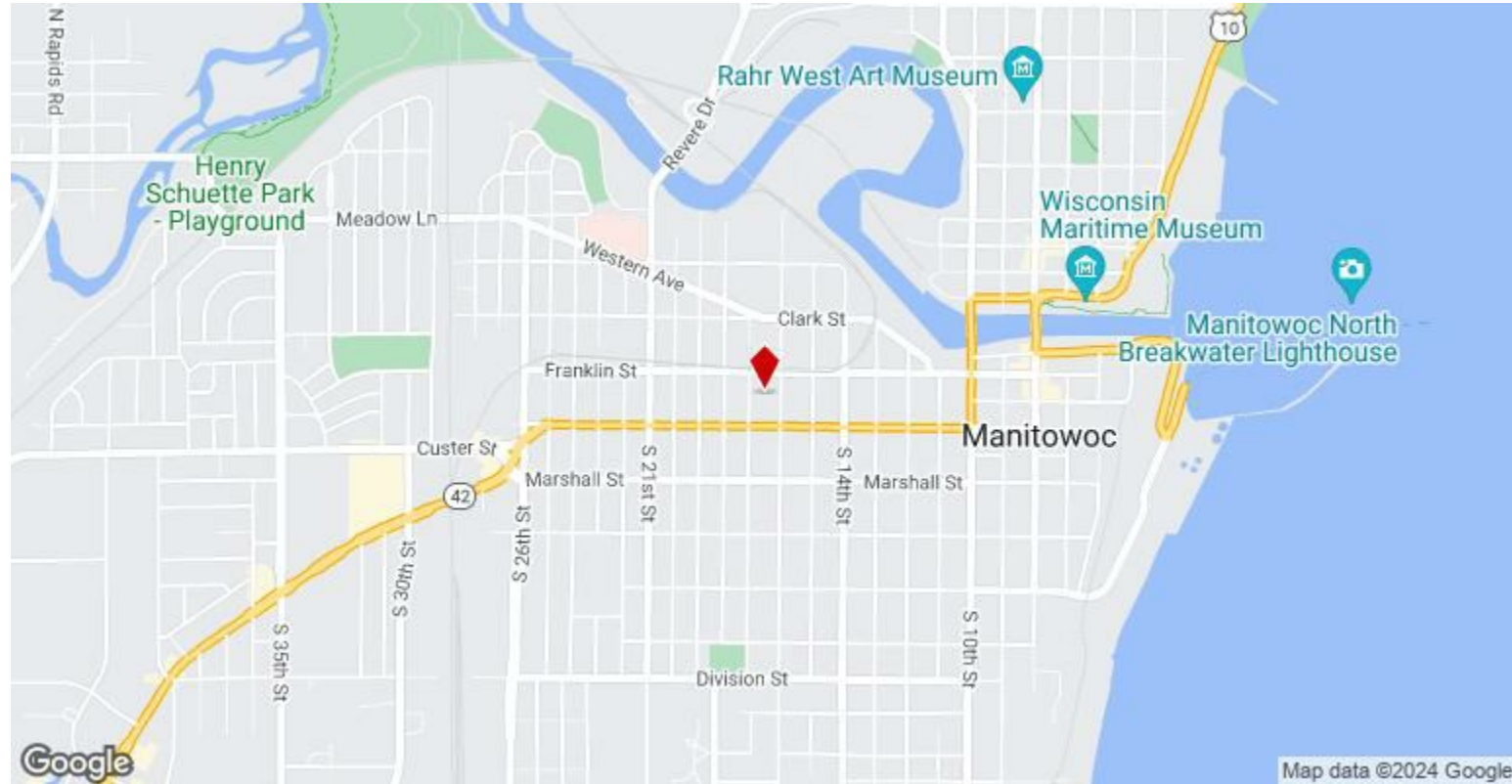
1st Floor	Space Available:	10,000 - 60,000 SF
	Rental Rate:	\$3.50 /SF/YR
	Date Available:	Now
	Service Type:	Modified Gross
	Space Type:	Relet
	Space Use:	Industrial
	Lease Term:	3 - 5 Years

Warehouse space in Heavy industrial zone, with 22" ceiling heights, sprinklered and heated, multiple dock bays, and Enormous ground level overhead. 24 X 20 newer roof. Long term and short term space available,

# 901 S 17th St

901 S 17th St, Manitowoc, WI 54220

## Location





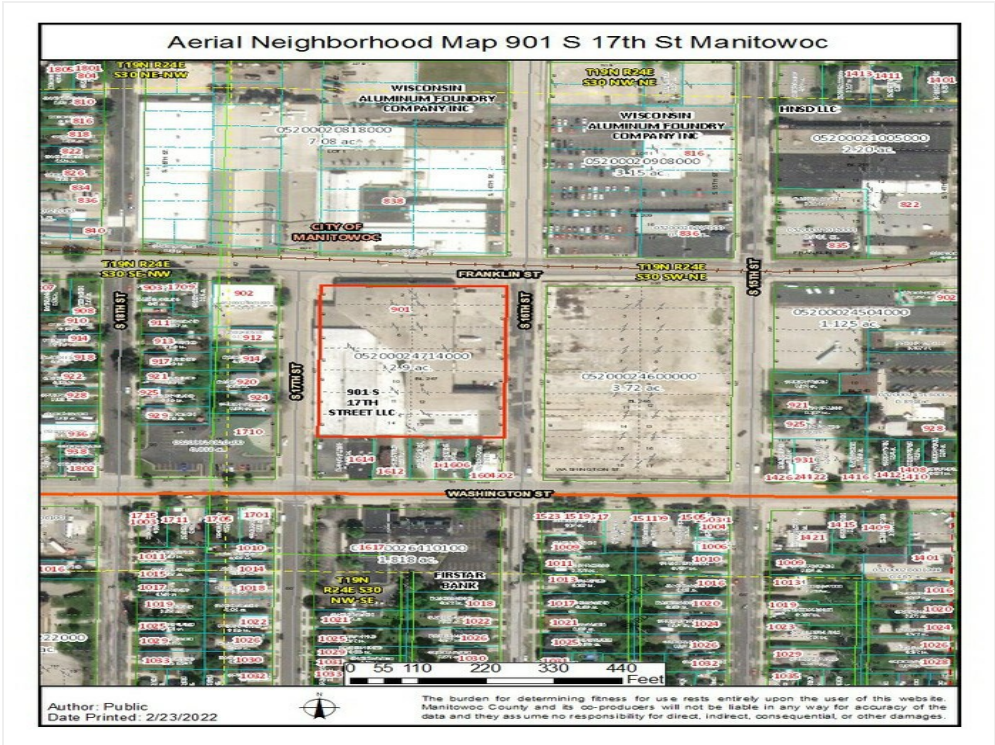
# 901 S 17th St

901 S 17th St, Manitowoc, WI 54220

## Property Photos



Primary Photo



Aerial Neighborhood Map 901 S 17th St Manitowoc

901 S 17th St, Manitowoc, WI 54220

## Property Photos



901 S 17th St Manitowoc Aerial Map



Building Photo



# 901 S 17th St

901 S 17th St, Manitowoc, WI 54220

## Property Photos



Building Photo

## 901 S 17th St

901 S 17th St, Manitowoc, WI 54220



**George Krause**

[gkrause@choicecre.com](mailto:gkrause@choicecre.com)

(920) 905-0550

**Choice Commercial Real  
Estate, LLC**

100 Maritime Dr, Suite 3C  
Manitowoc, WI 54220

