

FOR LEASE

\$10.00 - \$15.00 PSF

+/- 550 SF - +/- 10,000 SF OF RETAIL SPACE AND AUTO SHOP
11950 PERRY RD., HOUSTON, TX 77064



CHRIS JOYCE
Principal

Chris@TexasCRES.com
(936) 577-0836

FLAVIO BEATO
Agent

Flavio@TexasCRES.com
(832)727-4475





PROPERTY HIGHLIGHTS



Location

11950 Perry Rd.
Houston, TX 77064



Asking Price

\$10.00 to \$15.00 PSF



Size

+/- 550 SF - +/- 10,000 SF
of Retail and Auto Shop

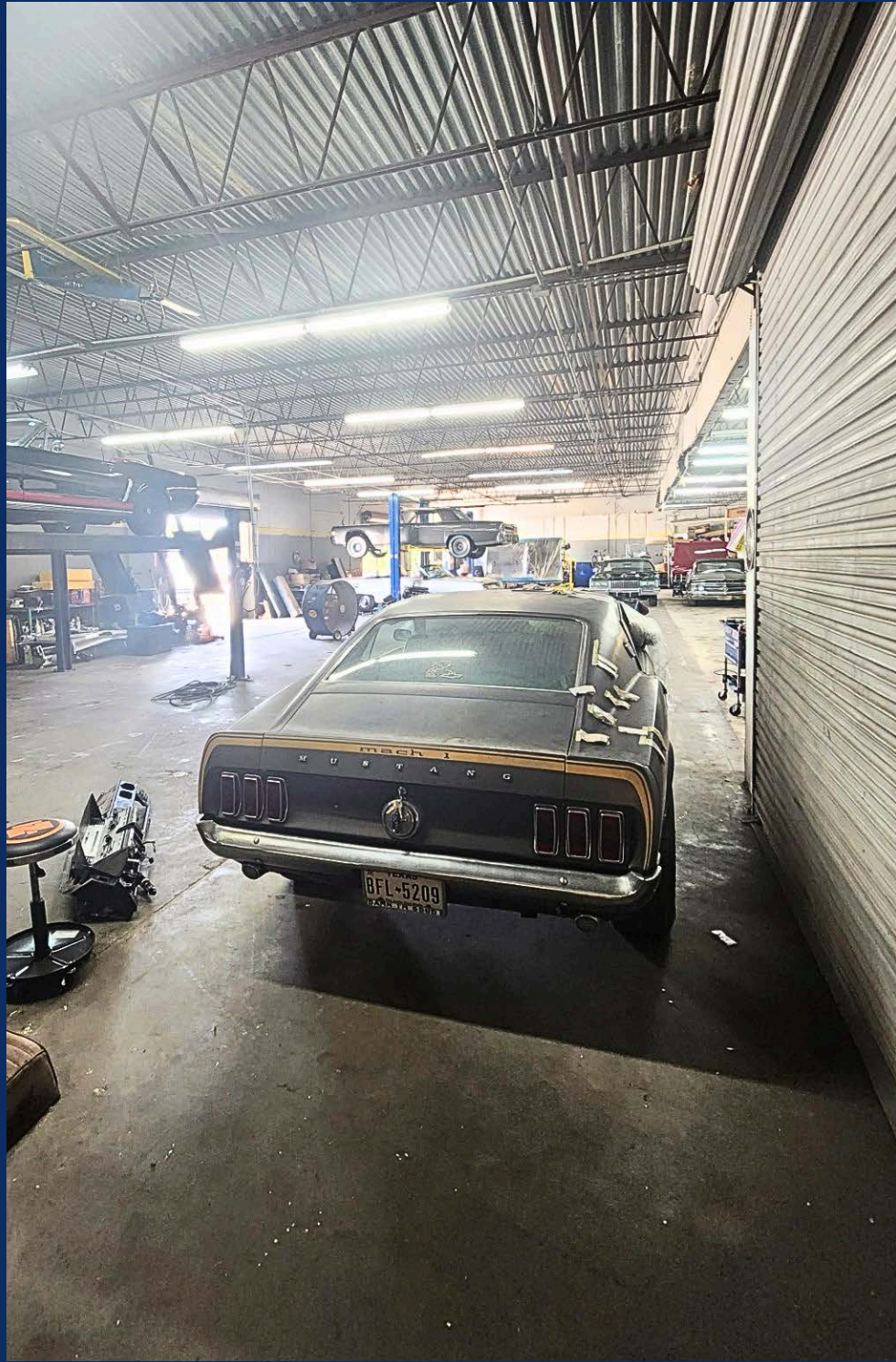
Contact:

CHRIS JOYCE
Principal
Chris@TexasCRES.com
(936) 577-0836

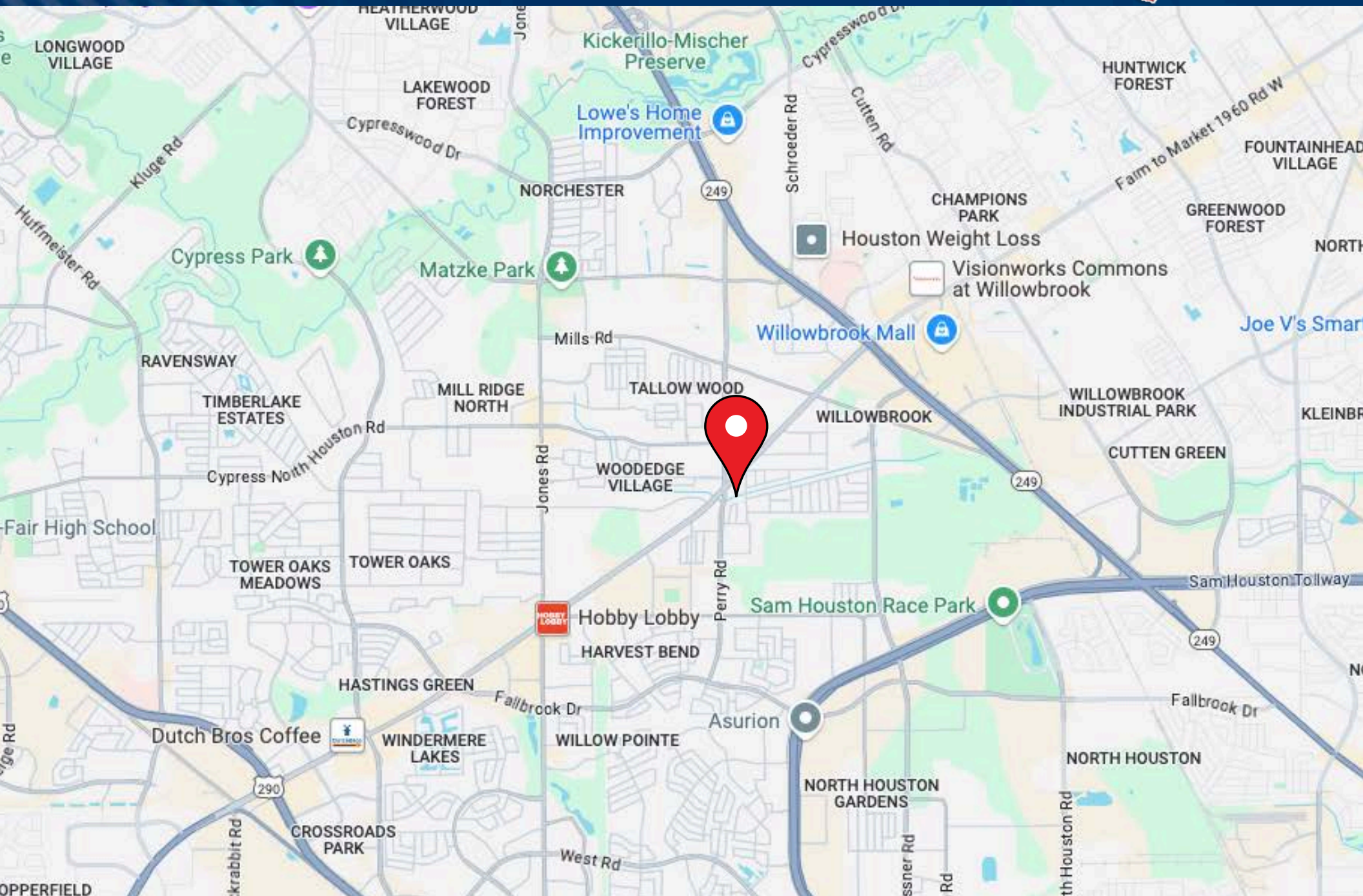
FLAVIO BEATO
Agent
Flavio@TexasCRES.com
(832)727-4475

- Auto shop and inline retail/office spaces available in a +/- 25,037 SF shopping center .
- Excellent location on the southeast corner of FM 1960 & Perry Rd; just west of SH 249 with easy access to Beltway 8 & US 290, the Willowbrook Mall & Hewlett Packard, Methodist Willowbrook, Vintage Park & St. Luke's at the Vintage.
- In high density residential & commercial populated area on high commute corridor.
- Ample parking on 20,000 SF paved area.
- Great visibility from signalized intersection.
- Tenant improvement allowance negotiable; based on Landlord Approval.
- Average Traffic of over 65,000 Vehicles Per Day on FM 1960 & over 12,000 Vehicles Per Day on Perry Road.
- Full Demographic package available upon request.

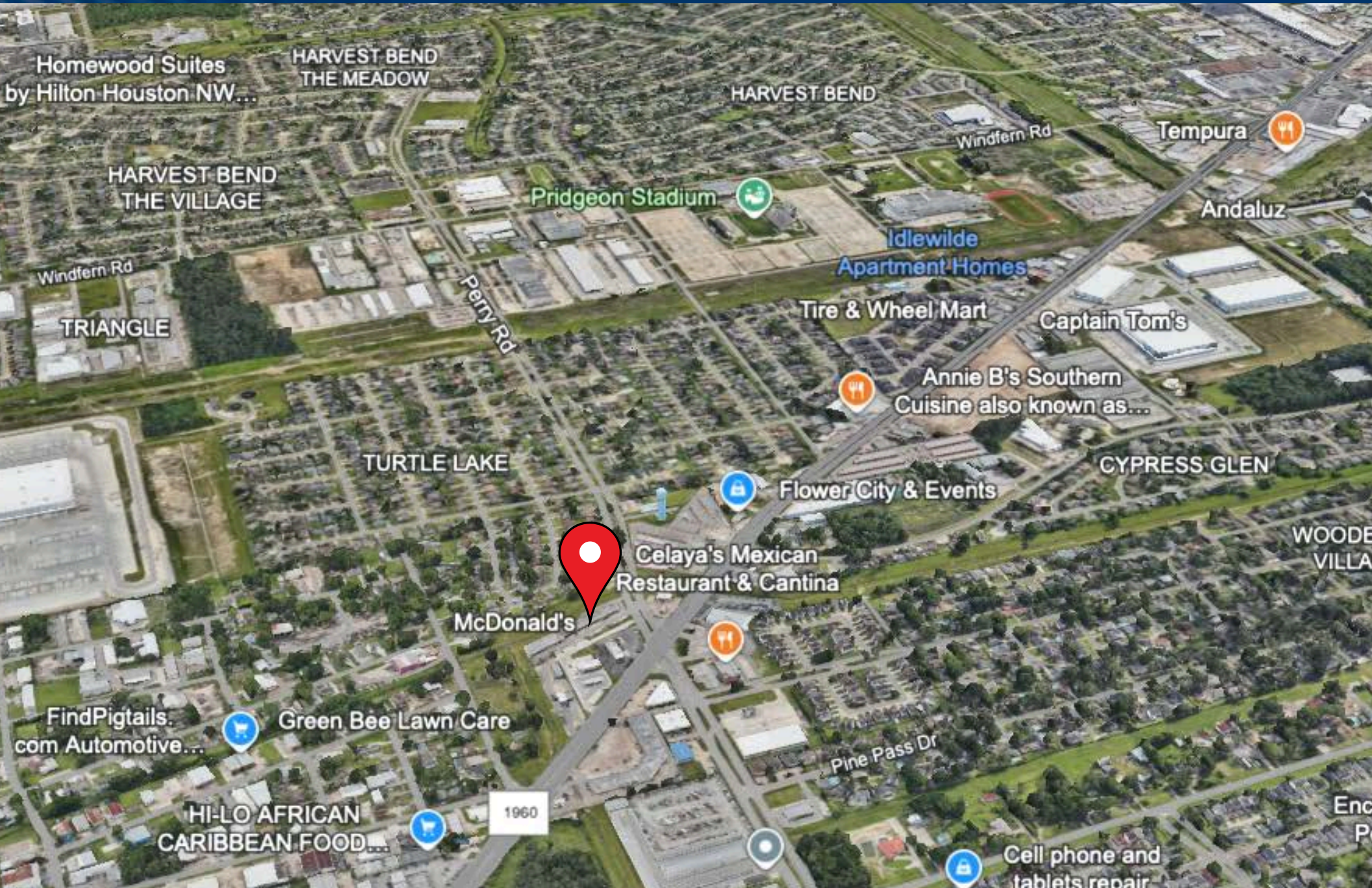




LOCATION MAP



MARKET AERIAL



DEMOGRAPHICS

DEMOGRAPHIC SUMMARY

11950 Perry Rd, Houston, Texas, 77064

Ring of 3 miles

KEY FACTS

102,773

Population



38,610

Households

36.2

Median Age

\$59,098

Median Disposable Income

EDUCATION

10.7%

No High School Diploma



23.8%

High School Graduate



29.9%

Some College/
Associate's Degree



35.6%

Bachelor's/Grad
/ Prof Degree



102,773

2023 Total
Population (Esri)

INCOME



\$70,717

Median Household
Income



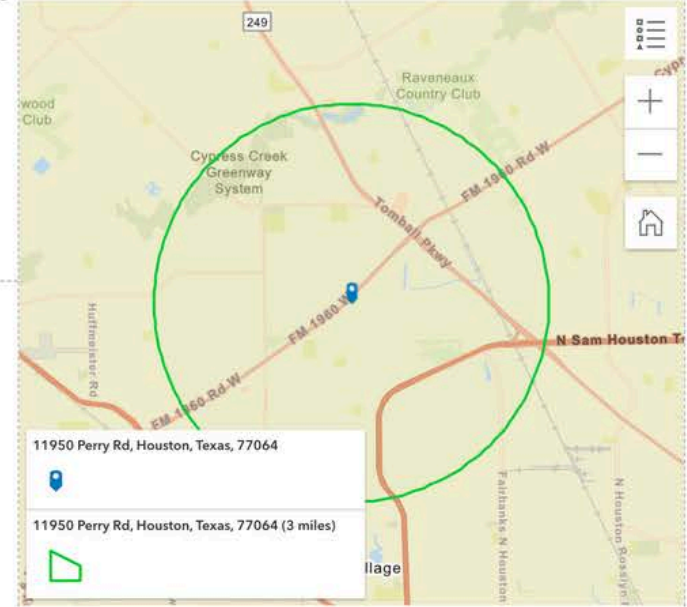
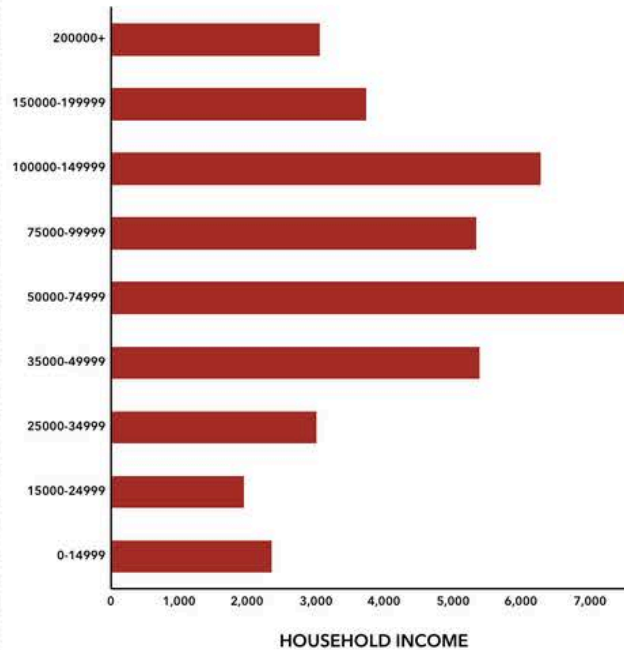
\$36,822

Per Capita Income



\$121,334

Median Net Worth



EMPLOYMENT



White Collar

67.0%



Blue Collar

20.7%



Services

14.8%

5.0%

Unemployment
Rate

Source: This infographic contains data provided by Esri (2024, 2029). © 2024 Esri



Information contained in this marketing piece is furnished by property owners and brokers who acquire the information from third party websites, county appraisal districts, appraisers, tax services and inspectors. The information is shared with Texas CRES, LLC for reference and for marketing purposes. Texas CRES, LLC makes no representations to the validity or accuracy of the information. Neither the listing Broker, or the property owner make any warranty, guarantee, or representation to the accuracy of the information. You should rely exclusively on your own property research and studies to confirm the accuracy of any information contained herein.

CHRIS JOYCE
Principal
Chris@TexasCRES.com
(936) 577-0836

FLAVIO BEATO
Agent
Flavio@TexasCRES.com
(832)727-4475

