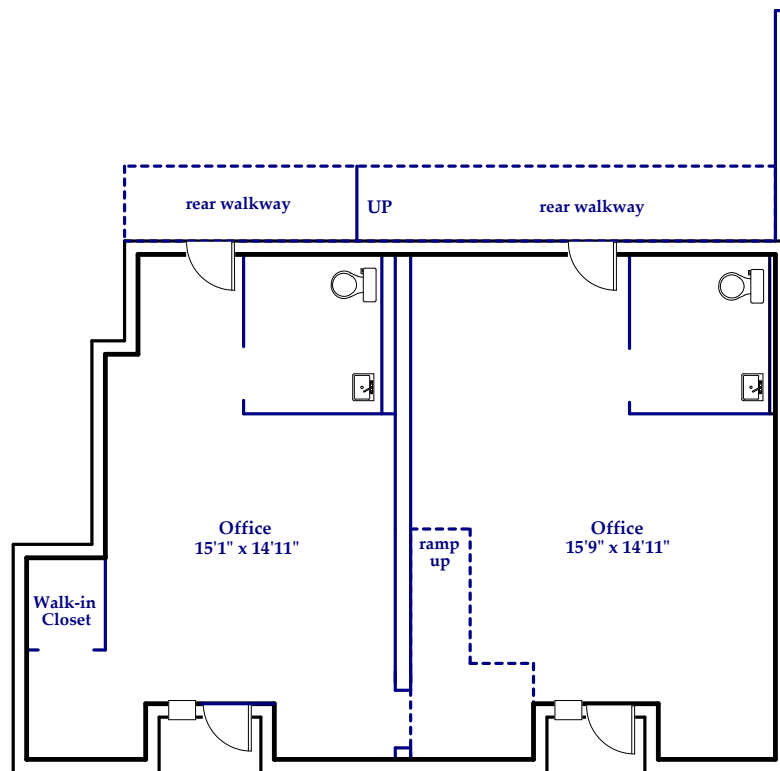


*257 Haywood Road, Asheville
Suites 103 & 105*

Approximate Net Leasable Area:
910 Square Feet



Condominium Square Footage is Calculated from Interior Dimensions
Gross Building Area: 910 Square Feet

Prepared by Judy Brouillette-O'Neil: ProPlans of the Carolinas, LLC ©
for Likewise Commercial Real Estate

All dimensions are rounded to the nearest .01 and are deemed reliable, but not guaranteed.
Square Footage Calculations determined following ANSI and BOMA Standards and NCREC House Measuring Square Footage Guidelines.

