



FOR SALE

PRIME CORNER LOT

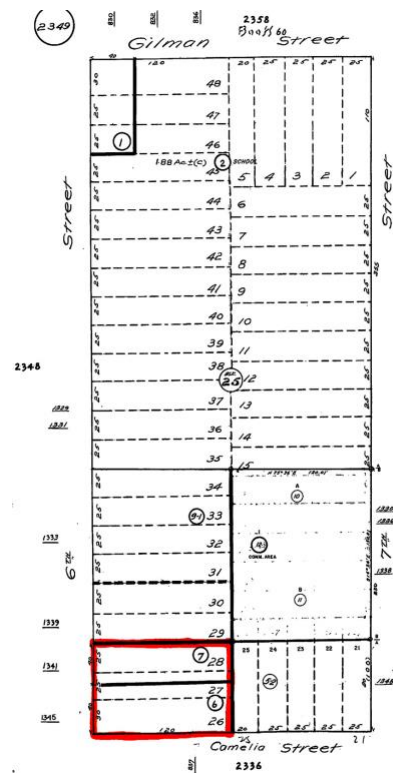
PROPERTY HIGHLIGHTS

- Central West Berkeley lot
- Primed for mixed development potential
- High trafficked area
- Flexible MULL zoning allows for a wide range of uses
- One block to Gilman Street and easy access to I-80
- Walk Score 90 Bike Score 95
- APN: 59-2349-7
59-2349-6

LOCATION
1341-1345 Sixth Street
at Camelia

OFFERED AT
\$1,200,000

SIZE
Two parcels totaling ±9,600 sq. ft.



732 Addison Street
Suite "C"
Berkeley, CA 94710

John Norheim
BRE # 00770171
jn@noryost.com
510-527-3400 x10

Elena Holsman
BRE# 01731812
eh@noryost.com
510-527-3400 x11

All information furnished herein was provided by sources deemed reliable, but no representation is made or implied as to the accuracy thereof.