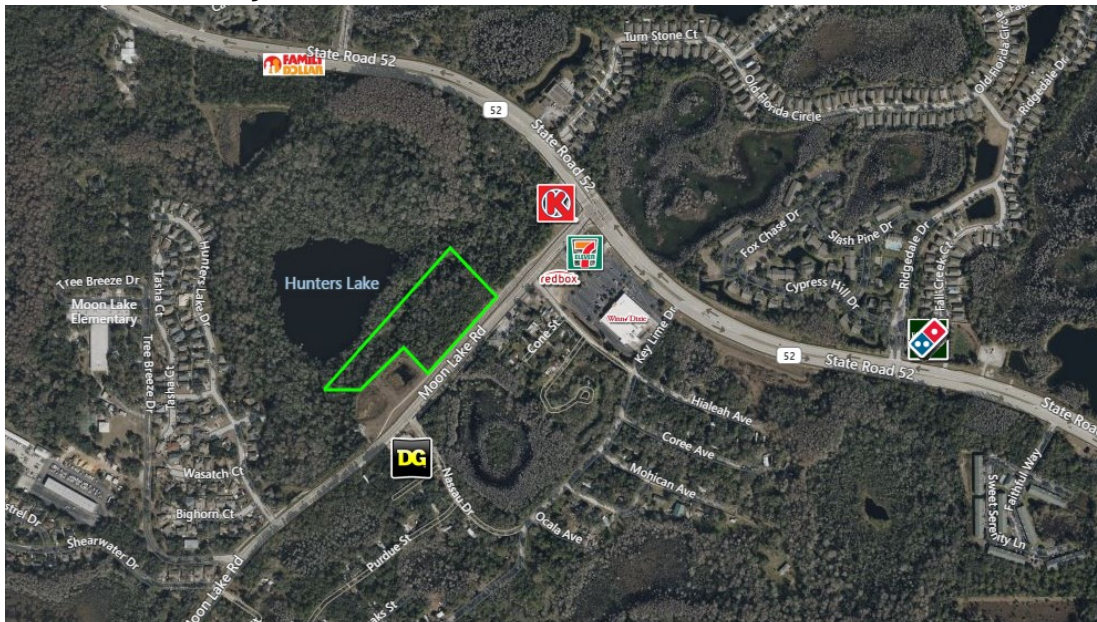


# MOON LAKE ROAD

New Port Richey, FL 34654



## FOR SALE

OFFERED FOR

### \$749,000

### 7.89 ACRES

LOT SIZE

### 343,832 FT

SQUARE FOOTAGE

### C-2

ZONING

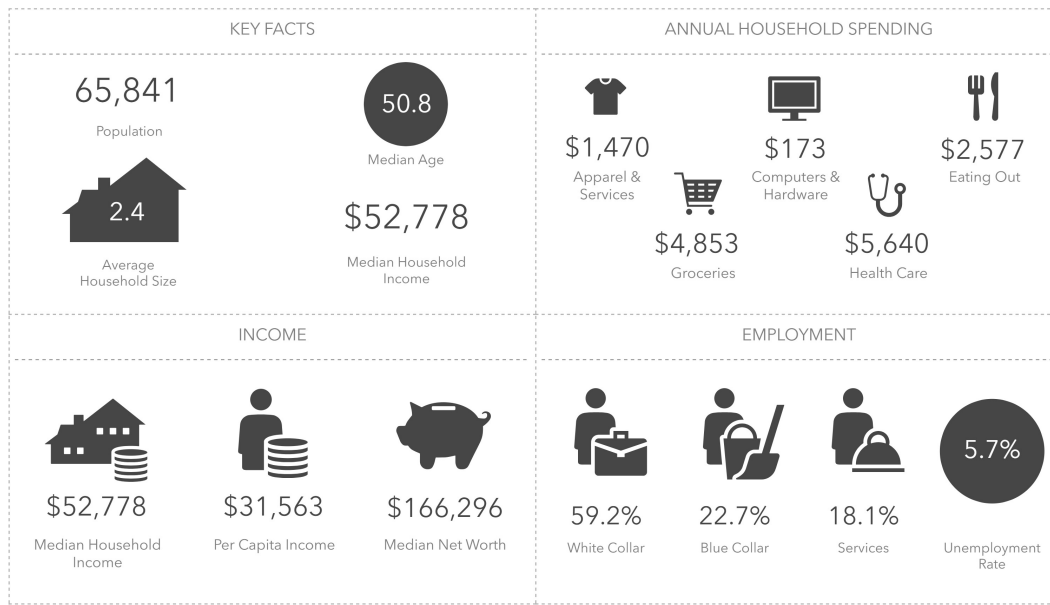
### 653± FT

FRONTAGE ON  
MOON LAKE RD

## VACANT COMMERCIAL LAND

7.89± acres of vacant land located along the west side of Moon Lake Road, approximately 1,000ft. south of S.R. 52. The property boasts 653ft of frontage along Moon Lake Road and is zoned Commercial-C2. With a future land use designation of Residential-6 du/ga, the potential for residential or commercial development is promising. County water and sewer lines are located on the west side of Moon Lake.

## AREA DEMOGRAPHICS (5 MILE RADIUS)



- Approximately 6± Net Useable Acres
- Central Sewer and Water available from Pasco County
- Future Land Use: Residential-6 du/ga
- 6± Miles from U.S. 19
- 3.5± Miles from Suncoast Parkway



**C. JOHN BRASHER & DREW GILMORE**

Broker Associate & Commercial Advisor

727-514-8133 | 727-992-3056

jbrasher@bhhsflpg.com | dgilmore@bhhsflpg.com

7916 Evolutions Way, Ste 210, Trinity, FL

**BERKSHIRE HATHAWAY** | FLORIDA PROPERTIES GROUP  
HOMESERVICES

