

FOR LEASE

8723 E VIA DE COMMERCIO
SCOTTSDALE, AZ 85258

LEVROSE
COMMERCIAL REAL ESTATE

TCN
COMMERCIAL REAL ESTATE SERVICES

AVAILABLE

Suite B102 ±1,400 SF \$24.75/SF FS

Suite B104 ±1,210 SF \$24.75/SF FS

*Suites B102 & B104 are contiguous to ±2,610

PARKING 4.6/1,000 (31 Covered, 15 Uncovered)

BUILDING SIZE ±10,243 SF

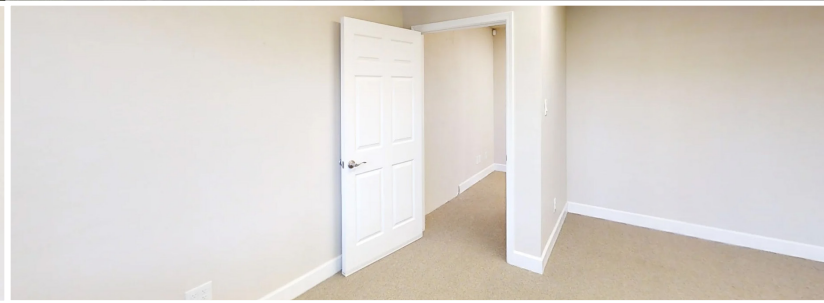
LOT SIZE ±0.73 AC

ZONING C-O, Scottsdale

PROPERTY HIGHLIGHTS

- Garden Style Office Building with small office options and easy-in, easy-out access
- Lush landscape features and loads of natural light
- Quick access to Loop 101 Freeway
- Ample parking, tons of covered spaces!
- Minutes from Salt River Fields Baseball Complex, Top Golf, Riverwalk and Talking Stick Resort
- Close proximity to many other amenities including Gainey Ranch Hyatt, Scottsdale Pavilions, golf courses and restaurants

 [VIEW VIRTUAL TOUR](#)



Jason Reddington, Partner
jreddington@levrose.com
480.289.4504

Keri Davies, Partner
kdavies@levrose.com
480.294.6572

FOR LEASE

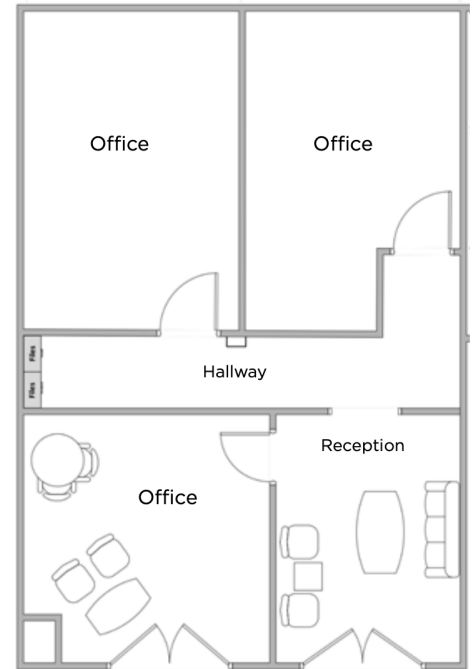
8723 E VIA DE COMMERCIO
SCOTTSDALE, AZ 85258

LEVROSE
COMMERCIAL REAL ESTATE

TCN
WESTERN
REAL ESTATE SERVICES



SUITE B104 FLOOR PLAN ±1,210 SF



Jason Reddington, Partner
jreddington@levrose.com
480.289.4504

Keri Davies, Partner
kdavies@levrose.com
480.294.6572