

For Sale & Lease

675 SF / 675 SF
Office Building

520 Washington Road
Mt. Lebanon, PA 15228



Highlights

- Unbeatable Location
- Updated Lobby & Common Area
- Plentiful Local Parking
- Extreme Walkability
- Surrounded by Restaurants



John Eliopoulos

412.613.6229

jeliopoulos@naiburnsscalo.com

NAI Burns Scalo

Brokerage Services

Property Summary



Property Description

3 Private Offices
In-Suite Restroom
Private Balcony

Offering Summary

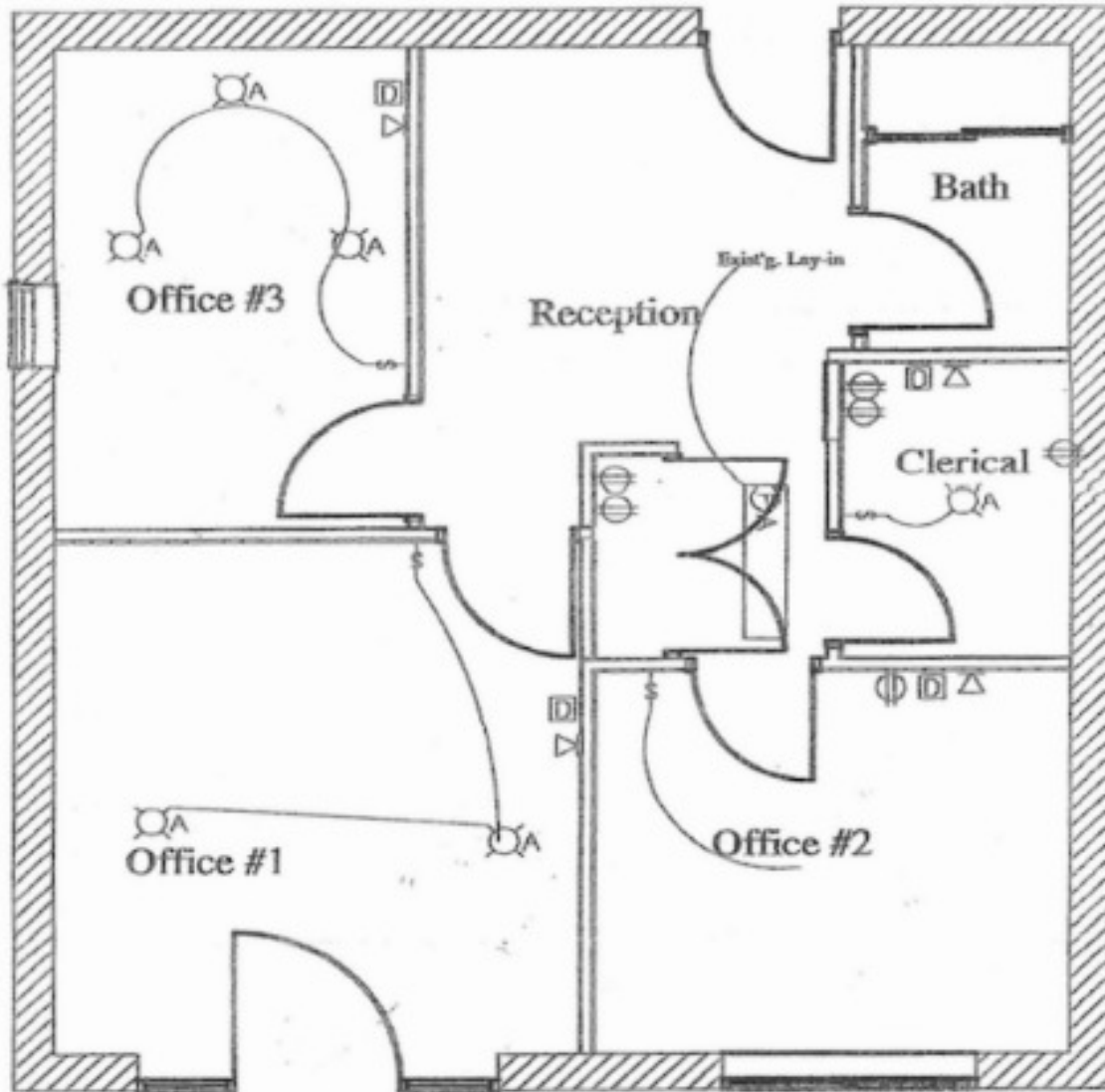
Sale Price:	Subject To Offer
Lease Rate:	Negotiable
Number of Units:	1
Available SF:	675 SF
Building Size:	675 SF

Demographics	0.25 Miles	0.5 Miles	1 Mile
Total Households	792	3,411	10,224
Total Population	1,662	7,386	23,011
Average HH Income	\$123,683	\$122,199	\$140,514

John Eliopoulos
412.613.6229
jeliopoulos@naiburnsscalo.com

NAI Burns Scalo
Brokerage Services

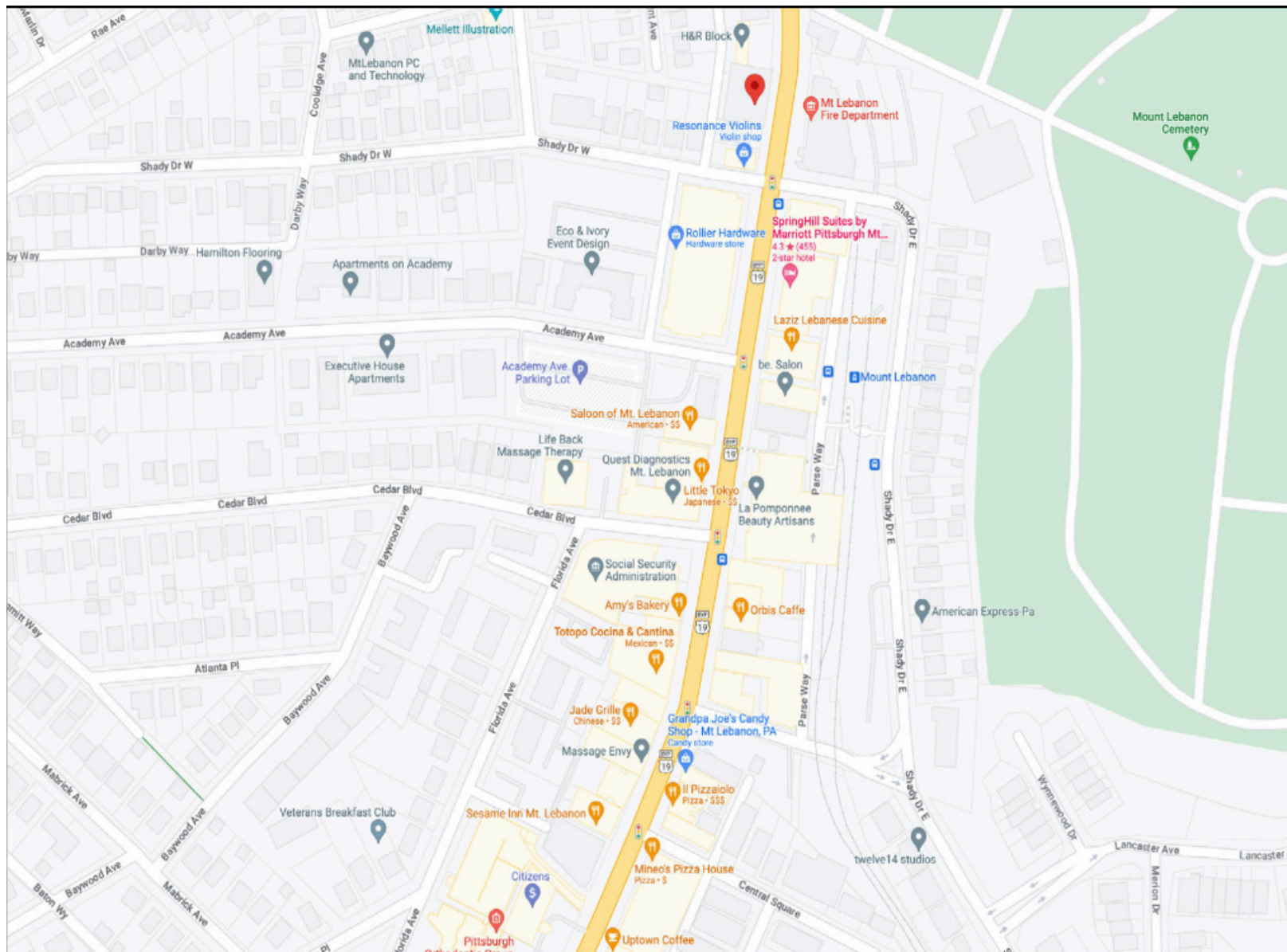
Floor Plans



John Eliopoulos
412.613.6229
jeliopoulos@naiburnsscalo.com

NAIBurns Scalo
Brokerage Services

Walkable Amenities



John Eliopoulos
412.613.6229
jeliopoulos@naiburnsscalo.com

NAIBurns Scalo
Brokerage Services