

---

# 47683 Avante Drive

Wixom, Michigan

1,940 SF Immediately Available



## Contact Us

**Edward Wujek**

Vice Chairman  
+1 248 351 2005

[edward.wujek@cbre.com](mailto:edward.wujek@cbre.com)

**Philip Sprague**

Vice President  
+1 248 351 2032

[philip.sprague@cbre.com](mailto:philip.sprague@cbre.com)

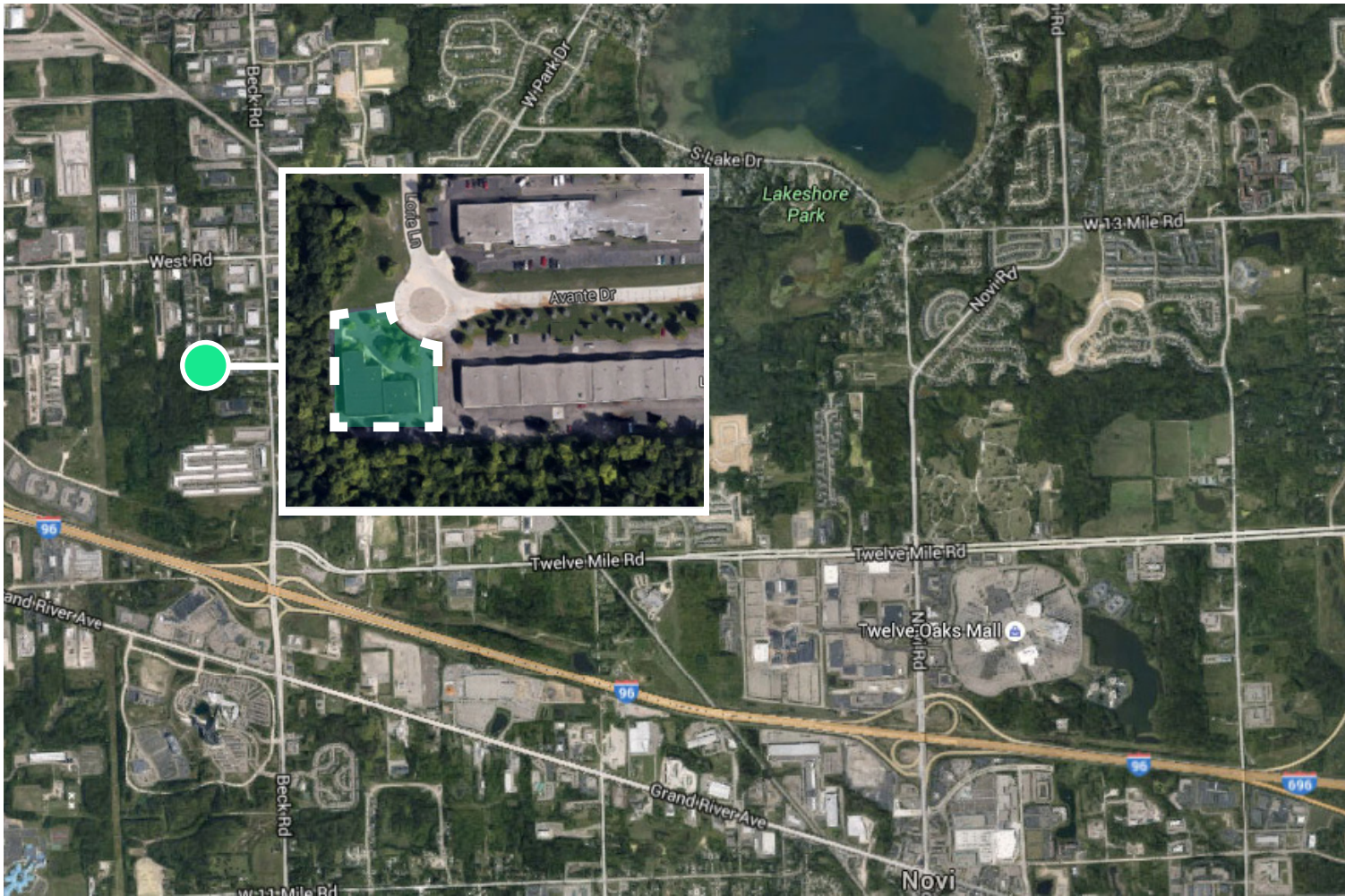
**Kelly Cubbin**

Vice President  
+1 248 936 6852

[kelly.cubbin@cbre.com](mailto:kelly.cubbin@cbre.com)

## 47683 Avante Drive

Wixom, MI



# Property Features

- + Attractive brick masonry construction built in 1995
- + 16' clear height in warehouse with one (1) grade level door.
- + Parking: 2.30/1,000 SF
- + Power: 200a/220v
- + Immediate access to I-96 at the Beck Road Interchange providing connectivity to M-5, I-696, and I-275
- + 47683 Avante Drive - 1,940 SF Available

**\$13.95/SF Gross + Utilities**

# Property Overview

- + County: Oakland
- + Zoning: M-1 (Light Industrial)
- + Total Building Size: 11,160 SF
- + Available SF: 1,940 SF
- + Tenant is responsible for utilities, janitorial, interior repairs, maintenance and trash
- + Extremely well maintained industrial facility
- + Professional ownership group

Year Built	1995
Divisible	No
Acreage	0.98 AC
Construction	Masonry
Roof	Rubber Membrane
Stories	One (1)
Floor Drains	No
Ceiling Height	16'
Parking	2.30/1,000
HVAC	GFA
Power	200 amp / 220 volt
Security System	At Tenant Expense
Lighting	Fluorescent
Restrooms	Yes
Grade Level Doors	One
Truckwells/Docks	No



# Building Floor Plan

