

For Lease

# Tuscano Medical Parc



10521 Jeffreys St.  
Henderson, NV 89052

**David Bauman, SIOR, CCIM**

Senior Vice President

O. 702.954.4126

C. 702.460.7013

[dbauman@logicCRE.com](mailto:dbaum@logicCRE.com)

S. 0182687

**Nicole Clovis**

Senior Associate

O. 702.954.4151

C. 702.250.7755

[nclovis@logicCRE.com](mailto:nclovis@logicCRE.com)

S. 0193945

# Listing Snapshot



**\$1.95 PSF NNN**  
Lease Rate



**± 1,467 - 5,724 SF**  
Available Square Footage



**\$0.42 PSF/Mo.**  
CAM

## Property Highlights

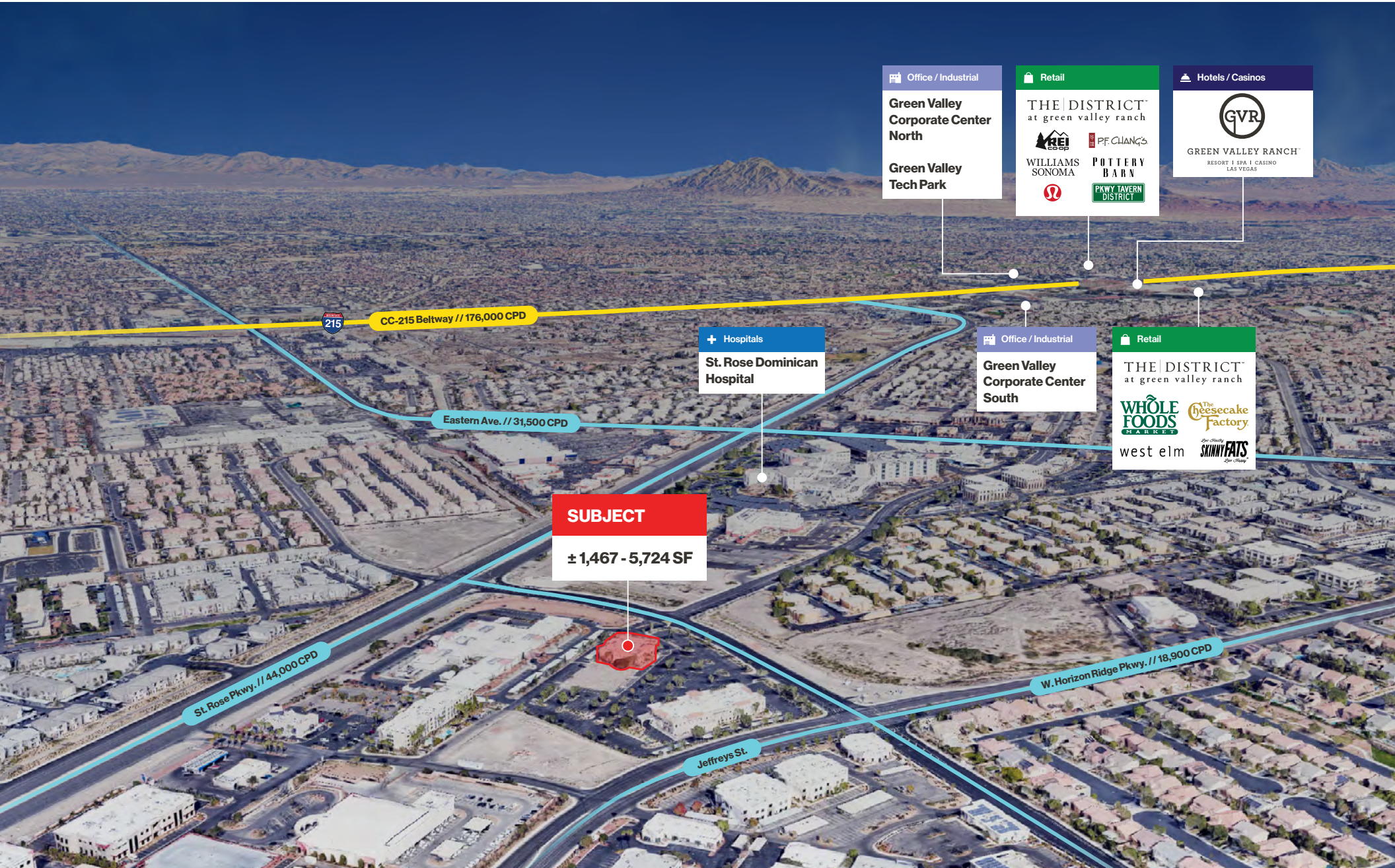
- Beautiful, well appointed building
- Zoned: Office Commercial
- Grey shell space with generous Tenant Improvement Allowance available for qualified tenants
- Close proximity to retail and restaurant amenities
- Conveniently located adjacent to the Dignity Health - St. Rose Dominican Hospital campus in Henderson
- Easy access to I-15 & CC-215 Freeways and the Las Vegas Strip
- Located in the shadows of the Famous Las Vegas Strip, the property is ideally located within the central portion of Las Vegas Valley
- CAM's \$0.42 PSF/Mo.

## Demographics

	1-mile	3-mile	5-mile
2024 Population	24,153	149,905	317,029
2024 Average Household Income	\$104,260	\$120,666	\$126,412
2024 Total Households	10,179	60,600	129,567







**SUBJECT**  
± 1,467 - 5,724 SF

Office / Industrial

**Green Valley Corporate Center North**

**Green Valley Tech Park**

Retail

**THE DISTRICT™**  
at green valley ranch

WILLIAMS SONOMA    POTTERY BARN

PKWY TAVERN DISTRICT

Hotels / Casinos

**GVR**

**GREEN VALLEY RANCH™**  
RESORT | SPA | CASINO  
LAS VEGAS

+ Hospitals

**St. Rose Dominican Hospital**

Office / Industrial

**Green Valley Corporate Center South**

Retail

**THE DISTRICT™**  
at green valley ranch

**WHOLE FOODS MARKET**    **The Cheesecake Factory**

west elm    **SKINNYFATS**

CC-215 Beltway // 176,000 CPD

Eastern Ave. // 31,500 CPD

St. Rose Pkwy. // 44,000 CPD

W. Horizon Ridge Pkwy. // 18,900 CPD

Jeffreys St.



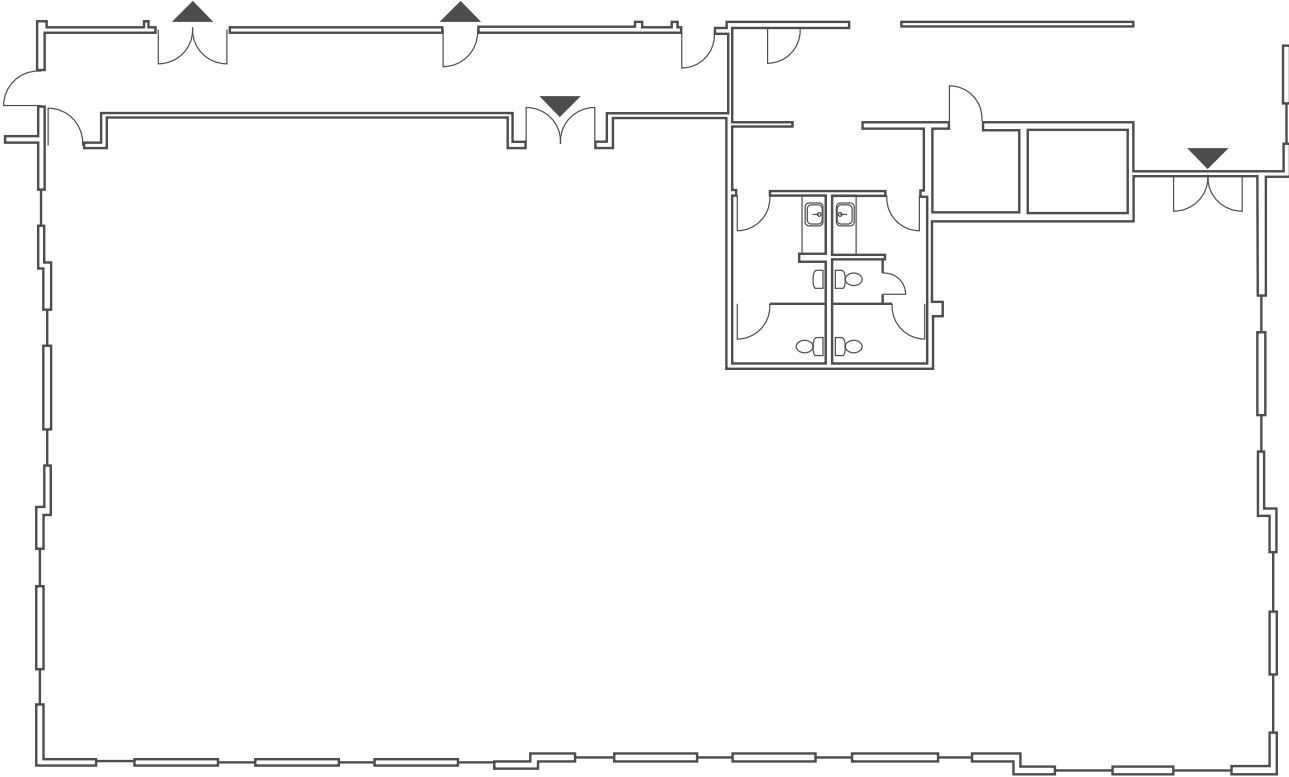




# Floor Plan - Shell

## Suite 201: ± 5,724 SF

- Building: 10521
- Suite: 201
- Total SF: ± 5,724 SF
- Lease rate: \$1.95 PSF/Mo.

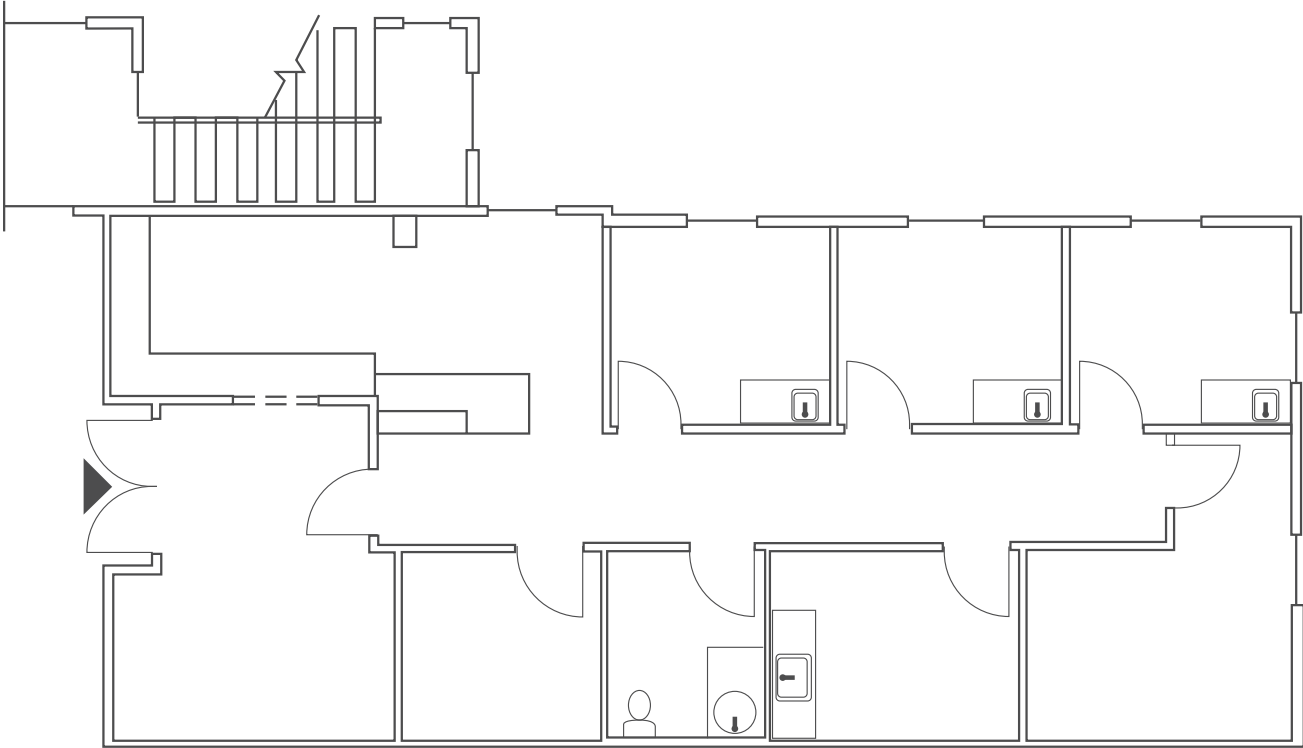




# Floor Plan

## Suite 220: ± 1,467 SF

- Building: 10521
- Suite: 220
- Total SF: ± 1,467 SF
- Lease rate: \$1.95 PSF/Mo.





Property Photos





# Key Figures of Southern Nevada

Clark County, home to the world-famous Las Vegas Strip, is home to over **3.19 million residents**. With the 7th busiest airport in the US, Harry Reid International Airport, Southern Nevada welcomes **40.8 million visitors annually**. From the neon lights and bustling casinos to the serene beauty of Red Rock Canyon and Lake Mead, Clark County offers an unparalleled lifestyle and adventure for all.



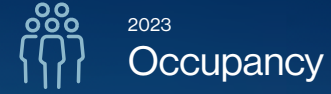
**40.8MM**

Number of Visitors to Las Vegas



**\$13.4B**

Clark County's Gaming Revenue



**90.7%**

Las Vegas' Weekend Occupancy

**57.6MM** Number of Enplaned/Deplaned  
Airline Passengers

**\$8.9B** Las Vegas Strip Gaming Revenue  
**\$179.3B** Overall Economic Impact of Tourism

**82.6%** Las Vegas' City-Wide Occupancy

**± 5k** Number of People Moving  
To Las Vegas Daily

**6.0MM** Number of Convention Visitors  
**154k** Number of Hotel Rooms

**20%** Year Over Year Increase in  
Convention Attendance



# Top Projects 2024-2028

## Under Construction & Planned



### \$30.5 Billion

In Project Costs in the Development Pipeline in Southern Nevada

#	Project	Cost	Status of Project	Estimated
1	<b>Oak View Group Arena &amp; Hotel-Casino</b> 850,000 SF arena, casino, and hotel	<b>\$10B</b>	Planned	2026
2	<b>Brightline High Speed Rail</b> High-speed rail line from Las Vegas to SoCal	<b>\$2B</b>	Planned	2027
3	<b>Sony / Howard Hughes Project</b> Movie studio and mixed-use development on 30 AC in Summerlin South	<b>\$1.8B</b>	Planned	TBD
4	<b>Tropicana / A's Stadium</b> 30,000 seat ballpark on the Tropicana site	<b>\$1.5B</b>	Planned	2028
5	<b>LV Convention Center N., Central, &amp; S. Halls Renovation</b> Technology upgrades, newly designed parking lot, outdoor plaza and indoor lobby at the South Hall	<b>\$600MM</b>	Under Construction	2025
6	<b>UHS Henderson Hospital</b> 40 AC medical campus, 400,000 SF medical campus, 150 hospital beds	<b>\$385MM</b>	Under Construction	2024
7	<b>Universal Studios- Horror Unleashed (AREA 15)</b> Next to Area 15/close to LV Strip; 110,000 SF; 20 AC expansion	<b>DND</b>	Under Construction	TBD
8	<b>Station's Casino Inspirada</b> Henderson; 80,000 SF of casino space, 600 hotel rooms, 4 restaurants, 11 unit food hall, bowling alley, movie theatre	<b>DND</b>	Under Construction	March 2025
9	<b>BLVD Retail Center</b> Las Vegas Strip; high-end retail shopping mall w/ outdoor experience for consumers	<b>DND</b>	Under Construction	Early 2025
10	<b>Fertitta Entertainment Casino / Hotel Project</b> 43-story 2,420 room project on the southeast corner of LV Blvd. and Harmon	<b>DND</b>	Planned	TBD



Source: vegasdevmap.com | lvcva.com/research | reviewjournal.com/business DND: Did Not Disclose



# A New Frontier for Sports

Las Vegas is now a sports epicenter, with teams like the NFL's Raiders, NHL's Golden Knights, WNBA's Aces and events like Super Bowl 58 and Formula 1 Grand Prix.



### Raiders

- Inaugural season: 2020
- Home Field: **\$1.9B** Allegiant Stadium built in 2020 with **65,000 seat capacity**
- Hosted Super Bowl 58 in 2024



### Formula 1

- Purchased 39 AC for **\$240MM** in 2022 with a total project cost estimated at **\$500MM**
- Inaugural race: November 2023
- Race attracted 315,000 fans and generated **\$1.2B** in economic impact



### Vegas Golden Knights

- Inaugural season: 2017-18
- Home ice: T-Mobile Arena built in 2016 with **18,000 seat capacity**
- **2023 Stanley Cup Champions**



### Ultimate Fighting Championship

- Las Vegas is home of the **55 AC UFC headquarters**
- UFC programming is broadcast in over **165 countries**
- Produces more than 40 live events annually around the globe, **over 20 hosted in Las Vegas in 2023**



### Las Vegas Aces

- Inaugural season: 2018
- **2022 and 2023 WNBA champions**
- Aces are owned by Mark Davis, the current owner of the NFL's Las Vegas Raiders



### Las Vegas A's – Coming Soon!

- In Nov. 2023, MLB owners approved Athletics' move from Oakland to Las Vegas
- New stadium planned at Tropicana Las Vegas, covering **35 acres**
- Expected to cost **\$1.5 billion** with **30,000 seat capacity**



### Las Vegas Aviators

- Minor League Baseball, Oakland A's affiliate
- Inaugural season: 2019
- Home Field: **\$150MM** Las Vegas Ballpark with **8,196 seating capacity**



### Henderson Silver Knights

- American Hockey League, Vegas Golden Knights Affiliate
- Inaugural season: 2020-21
- Home Ice: **\$84MM** Dollar Loan Center with **5,567 seating capacity**



### LV Lights FC

- American professional soccer team, that plays in the USL Championship
- Inaugural season: 2018
- Home field: Cashman Field with **9,334 seating capacity**

# Nevada

## Tax Advantages

Nevada is the most business-friendly state in the West, offering a very low-regulation environment and a variety of incentives to help qualifying companies make the decision to do business in the state. Both Money and Forbes Magazines have named the Silver State one of the most business-friendly in the country.

Nevada ranks as the **7th** best state in the Tax Foundation's 2023 State Business Tax Climate Index, an independent ranking of states in five areas of taxation: corporate taxes; individual income taxes, sales taxes, unemployment insurance taxes, and taxes on property, including residential and commercial property.

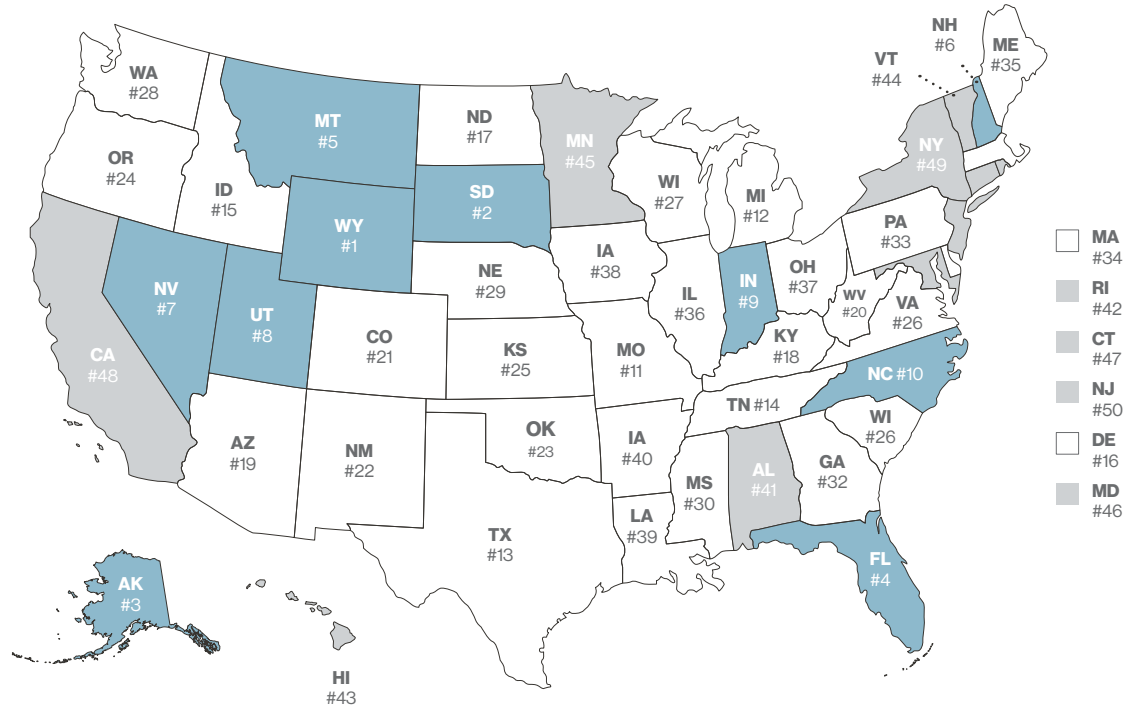
### Tax Free Haven

- No Corporate Income Tax
- No Corporate Shares Tax
- No Franchise Tax
- No Personal Income Tax
- No Franchise Tax on Income
- No Inheritance or Gift Tax
- No Unitary Tax
- No Estate Tax

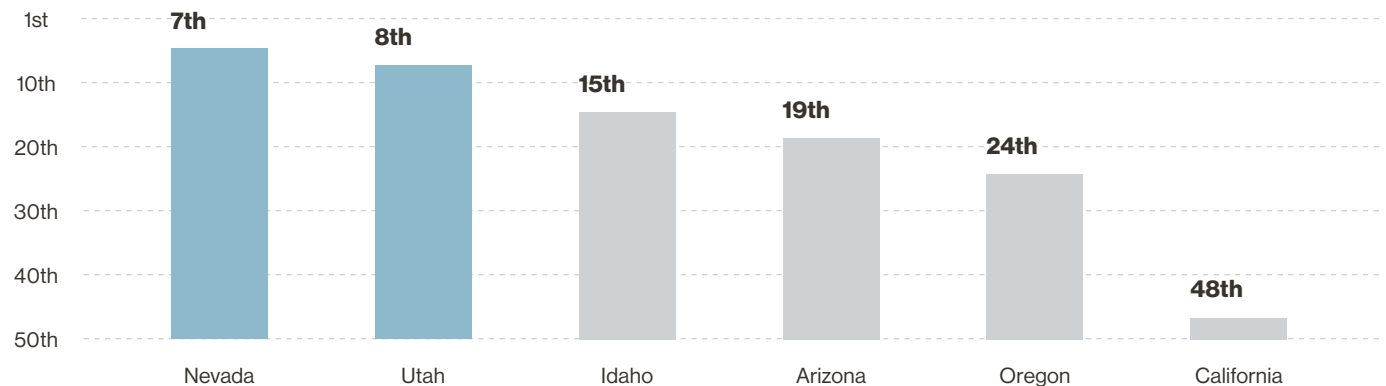
Source: taxfoundation.org

### 2023 State Business Tax Climate Index

10 Best Business Tax Climates    10 Worst Business Tax Climates



### Tax Climate Index Ranking By State





# A Look at Southern Nevada

## Clark County

Clark County, home to the renowned Las Vegas Strip, is the **nation's 11th largest county**. With over 3.19 million residents and 40.8 million yearly visitors, it offers various services, including the 7th busiest US airport and the state's largest hospital. Mt. Charleston and skiing are just 45 minutes away, with the Red Rock National Conservation Area nearby.

## Las Vegas

Las Vegas ranks as the **24th most populous city in the US**, the largest in Nevada. It anchors the Las Vegas Valley metro area, being the Mojave Desert's largest city. Celebrated globally as a resort destination, it's known for its vibrant gambling, shopping, dining, entertainment, and nightlife scenes, making the Las Vegas Valley the prime financial, commercial, and cultural hub of Nevada.

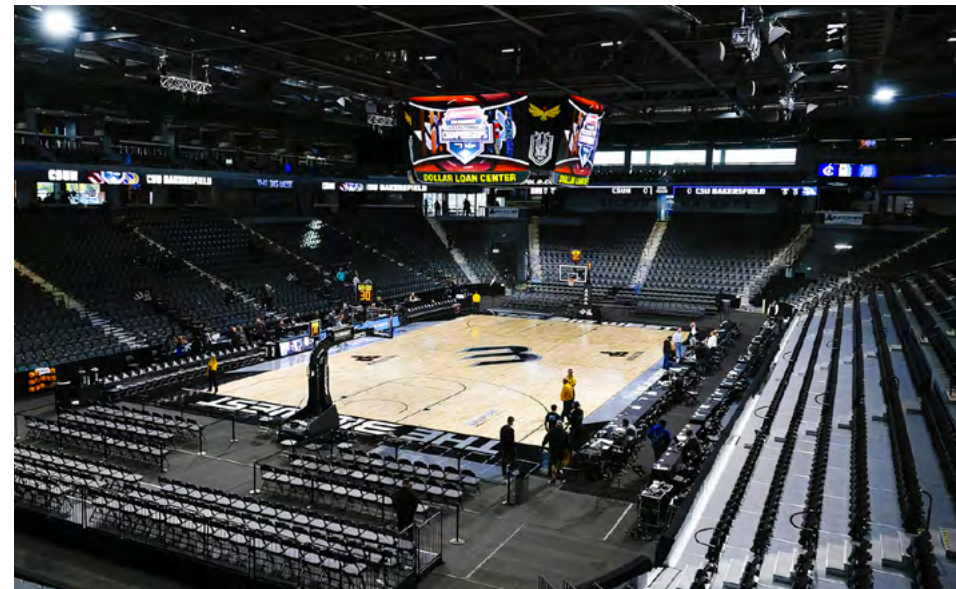
## North Las Vegas

North Las Vegas experienced a population surge over the past 17 years due to factors like low unemployment, a thriving economy driven largely by its industrial development, freeway loop connections, and record home construction. The city, with around **270,000 residents**, hosts Nellis Air Force Base, recognized as the "Home of the Fighter Pilot" and housing the U.S. Air Force Warfare Center, the world's largest and most rigorous advanced air combat training center.

## Henderson

As of 2023, Henderson, Nevada, boasting over 330,000 residents, retains its status as Nevada's second-largest city. It continues its legacy of safety, consistently ranking among the nation's top cities. In the most recent FBI Uniform Crime Report, Henderson secured a position in the **top 10 safest cities** in the United States.

Source: lvcva.com | britannica.com





# A Look at Southern Nevada

## Las Vegas Strip

The Las Vegas Strip, a 4.2-mile stretch in the heart of the city's entertainment and tourism industry, is a bustling epicenter of gaming and hospitality. Lined with extravagant hotels and casinos, and world-class restaurants, the Strip offers an array of experiences for visitors. From high-stakes gaming to captivating stage shows, the Las Vegas Strip continues to allure and inspire travelers.

## Downtown Las Vegas

Downtown Las Vegas (DTLV), the historic heart and central business district of Las Vegas, NV, originally served as the city's main gambling area before the Strip emerged. It still maintains its gaming scene and features a blend of high-rise hotels, businesses, cultural centers, historical landmarks, government institutions, and residential and retail developments. Fremont Street, home to most of downtown's hotels and casinos, **drew in 26MM annual visitors.**

## Summerlin

Summerlin, an upscale master-planned community in the Las Vegas Valley, borders the Spring Mountains and Red Rock Canyon to the west. It spans both Las Vegas city limits and unincorporated Clark County, covering over ± 24,200 acres. Summerlin boasts 300+ parks, 16+ public and 11 private schools, 15 houses of worship, 10 golf courses, 3 resort hotels, 4 recreational facilities, 125+ retail and entertainment centers, established office parks, and a medical center.

## Southwest Las Vegas

Encompassing master-planned developments such as Rhodes Ranch and Mountain's Edge, the Southwest is a distinct corner of the Valley cherished for its bedroom communities and rural allure, forming part of a larger unincorporated Las Vegas stretch striving to preserve its rural essence. Today, its strategic positioning near freeways yet distant from The Strip renders it an appealing locale for numerous Las Vegans and prospective home buyers alike.

Source: lvcva.com | britannica.com





# LOGIC Commercial Real Estate

## Specializing in Brokerage and Receivership Services



Join our email list and  
connect with us on LinkedIn

The information herein was obtained from sources deemed reliable; however LOGIC Commercial Real Estate makes no guarantees, warranties or representation as to the completeness or accuracy thereof.

For inquiries please reach out to our team.

**David Bauman, SIOR, CCIM**

Senior Vice President

O. 702.954.4126

C. 702.460.7013

dbauman@logicCRE.com

S. 0182687

**Nicole Clovis**

Senior Associate

O. 702.954.4151

C. 702.250.7755

nclovis@logicCRE.com

S. 0193945