



FOR SUBLEASE



**SUBLEASE
THROUGH 12/31/2028**



220 FOOTHILLS

Office and Yard

± 1,200 SF Office with ± 12,000 SF Yard | \$3,300/Month + NNN

220 Foothills Rd, Lake Oswego, OR

- Great location near downtown Lake Oswego providing many amenities nearby.
- Ideal for contractor office, vehicle storage, or boat storage.

DANIEL HELM, SIOR

Senior Vice President | Licensed in OR & WA
503-789-5750 | dhelm@capacitycommercial.com

MARK CHILDS, SIOR

Principal Broker | Licensed in OR & WA
503-542-4350 | markc@capacitycommercial.com

DANIEL SAYLES

Senior Vice President | Licensed in OR & WA
503-542-4351 | dsayles@capacitycommercial.com



PROPERTY SUMMARY



**FOR
SUBLEASE**

PROPERTY DETAILS

Address	220 Foothills Rd Lake Oswego, OR 97034
Available Space	1,200 SF Office with \pm 12,000 SF Yard Space
Lease Rate	\$1.00 / SF Office and \$0.18 / SF Yard
Use Type	Industrial / Contractor / Yard
Availability	ASAP
Sublease Until	December 31st, 2028

Location Features

- Open Reception , two private offices, shared open garden, breakroom, two restrooms, copy room.
- Easy accessibility to major roadways and surrounding commercial areas.
- Strategic proximity to major metropolitan areas ensures excellent regional connectivity.





AVAILABLE SPACE

AVAILABLE SPACE



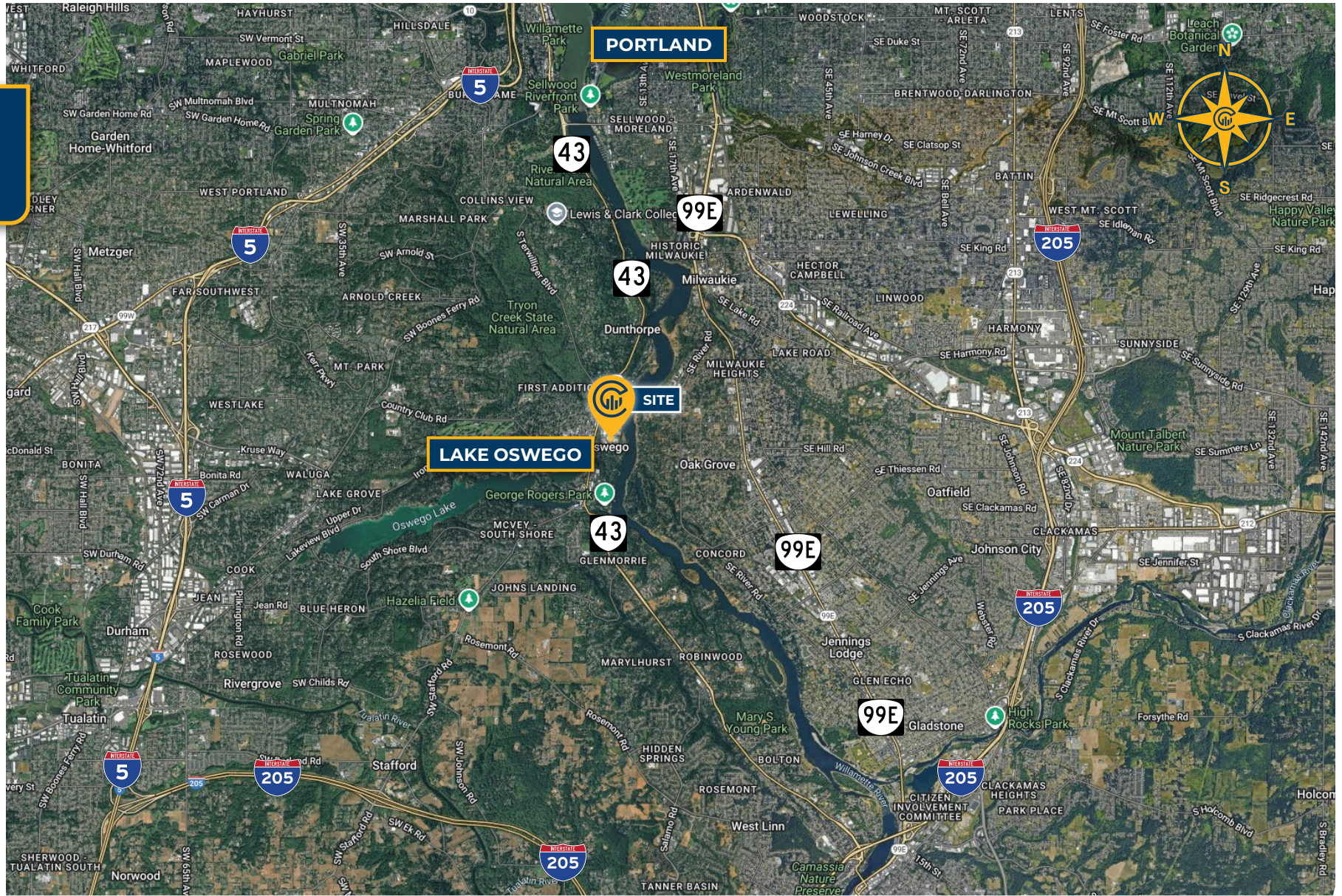


INTERIOR PHOTOS





LOCAL AERIAL MAP



*Average Daily Traffic Volume | Traffic Counts are Provided by REGIS Online at SitesUSA.com ©2025 | Map data ©2025 Google Imagery ©2025, Airbus, CNES / Airbus, Maxar Technologies, Metro, Portland Oregon, Public Laboratory, State of Oregon, U.S. Geological Survey, USDA/FPAC/GEO



DANIEL HELM, SIOR
Senior Vice President | OR & WA
503-789-5750
dhelm@capacitycommercial.com

MARK CHILDS, SIOR
Principal Broker | OR & WA
503-542-4350
markc@capacitycommercial.com

DANIEL SAYLES
Senior Vice President | OR & WA
503-542-4351
dsayles@capacitycommercial.com