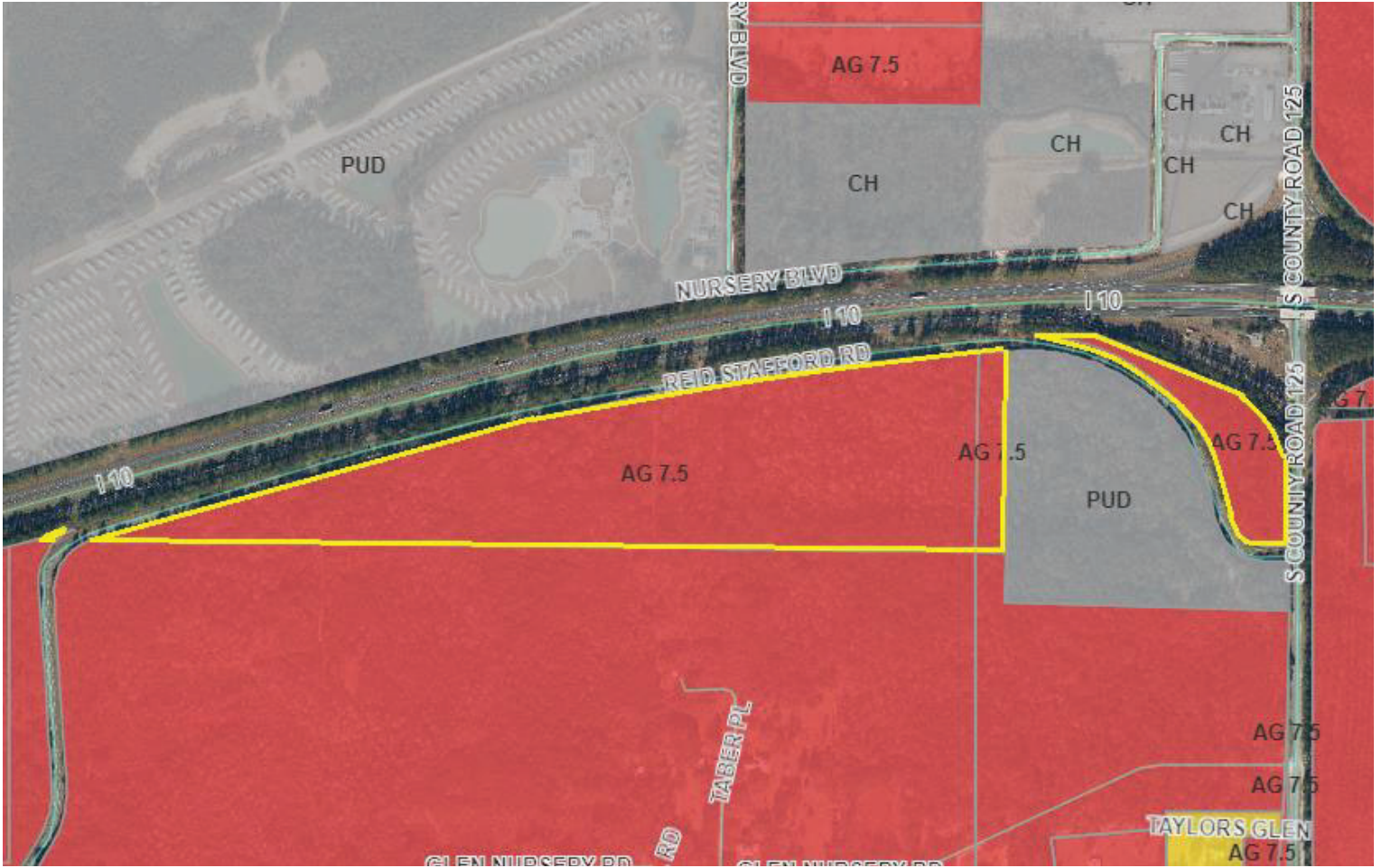


LAND USE AND ZONING

ZONING MAP



LAND USE/ZONING REQUIREMENTS

Zoning Jurisdiction	Baker County
Future Land Use Category	Agriculture B
Zoning District	Agriculture 7.5 (AG 7.5)
Primary Permitted Uses	Church, farming, fish ponds, golf courses, mobile homes, roadside produce, silviculture, single family residence, sports clubs.
Required Lot Area	7.5 acres
Required Lot Width	200'
Maximum Lot Coverage	NA
Minimum Yard Requirements	
Front	50'
Side	30'
Rear	25'
Maximum Height of Structures	35'
Parking Ratio	Varies by use
Current Use Legally Conforming	Yes
Zoning Change Likely	No