

Gunbarrel Office Space for Sublease

6000 SPINE ROAD | BOULDER, CO 80301
SECOND FLOOR

Unit Size: 14,838 SF
Rate: \$15 NNN (\$11.42) * includes utilities
Available: Now
Current Term End Date: 9/30/2030

A REAL VISION

This 14,838 square foot space has us lit up. Its location in bright and sunny Gunbarrel, Colorado probably has A LOT to do with that! Situated between Longmont and Boulder, enjoy quick access to Gunbarrel's many amenities including restaurants, breweries, doggy daycare, and Open Space trails! Did we mention the staggering vistas in every direction? But, it doesn't stop there - the modern interior has a vein of fun and funky that runs through the bullpen, kitchen, and common spaces. The offices and conference rooms are warm and engaging (and don't forget those views). Whatever your vision, bring it to life at 6000 Spine.

PROPERTY HIGHLIGHTS

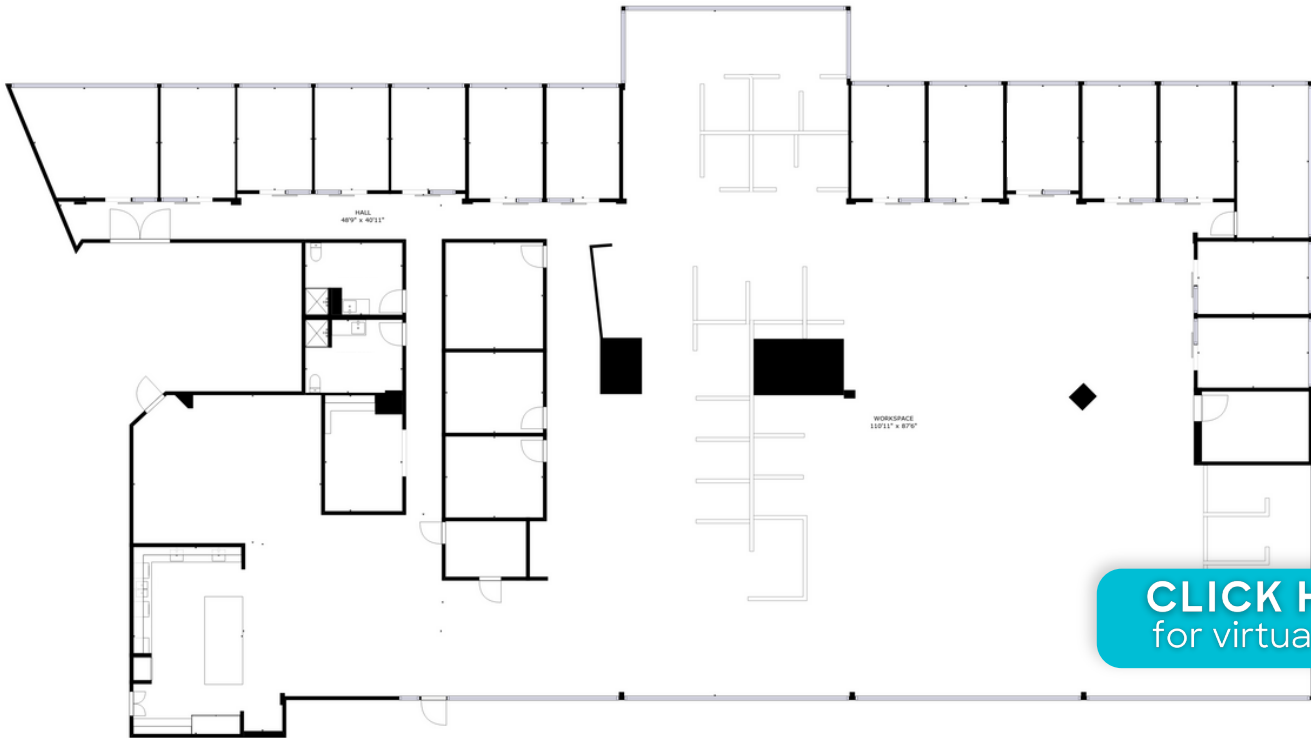
- Unobstructed views of the Rockies
- Near to an array of modern amenities
- Fun, funky, and vibrant with a great mix of open and enclosed spaces
- Easy commute from Longmont or Boulder
- Large, well appointed kitchen
- Impressive facilities with shower on site



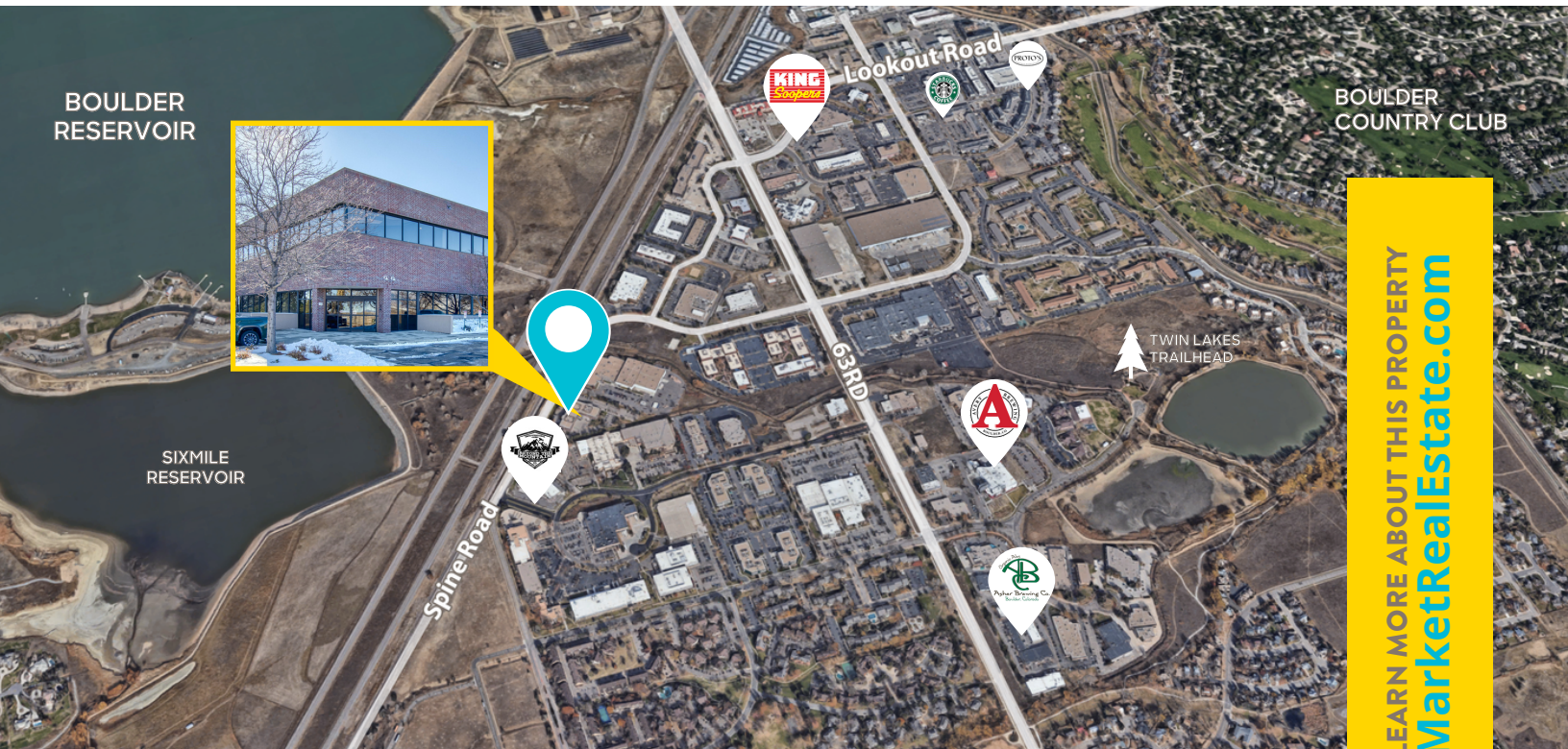
CLICK HERE
for virtual tour



LEARN MORE ABOUT THIS PROPERTY
MarketRealEstate.com



[CLICK HERE](#)
for virtual tour



ANNIE LARNER

303 444 1344 Annie@MarketBoulder.com

NATE LITSEY

303 444 4024 Nate@MarketBoulder.com

m

DIAGONAL HIGHWAY



6000 SPINE ROAD
BOULDER, CO 80301

HIGHWAY SIGNAGE
OPPORTUNITY



LEARN MORE ABOUT THIS PROPERTY
MarketRealEstate.com