



1022 NW OVERTON St, Portland, OR

Fantastic commercial ground floor unit offered in the stunning Cosmopolitan in Portland's Pearl District. A unique opportunity to purchase the first commercial condo resale available from the Cosmo's 2016 initial sale of 5 units. Large open space with 15ft ceiling and floor-to-ceiling windows provide wonderful natural light. The extensive custom-designed ceiling soffit was a build-out upgrade to house ducts, lighting, and wired speakers. The open floor plan allows a variety of businesses to configure the space as needed or keep it as its current hair salon use. Features a full bath with shower, kitchenette, wall of storage cabinets, and washer & dryer. The building amenities are vast and include a fitness room, guest suites, bike storage, community lounge with kitchen and fireplace available for owner held functions, conference room, terrace with firepit and BBQs, and 24/7 concierge service. Includes a secure deeded parking space and storage. All this and The Fields Park is your view across the street!

- 1,023 sq ft
- Built in 2016
- Open Floor Plan
- Full Bath with Shower
- Kitchenette
- Building Amenities Included
- Secure, Deeded Parking Space
- Deeded Storage



PATRICK GOEBEL
Licensed Broker

M: 503.380.4445
pgoebel@cirevg.com



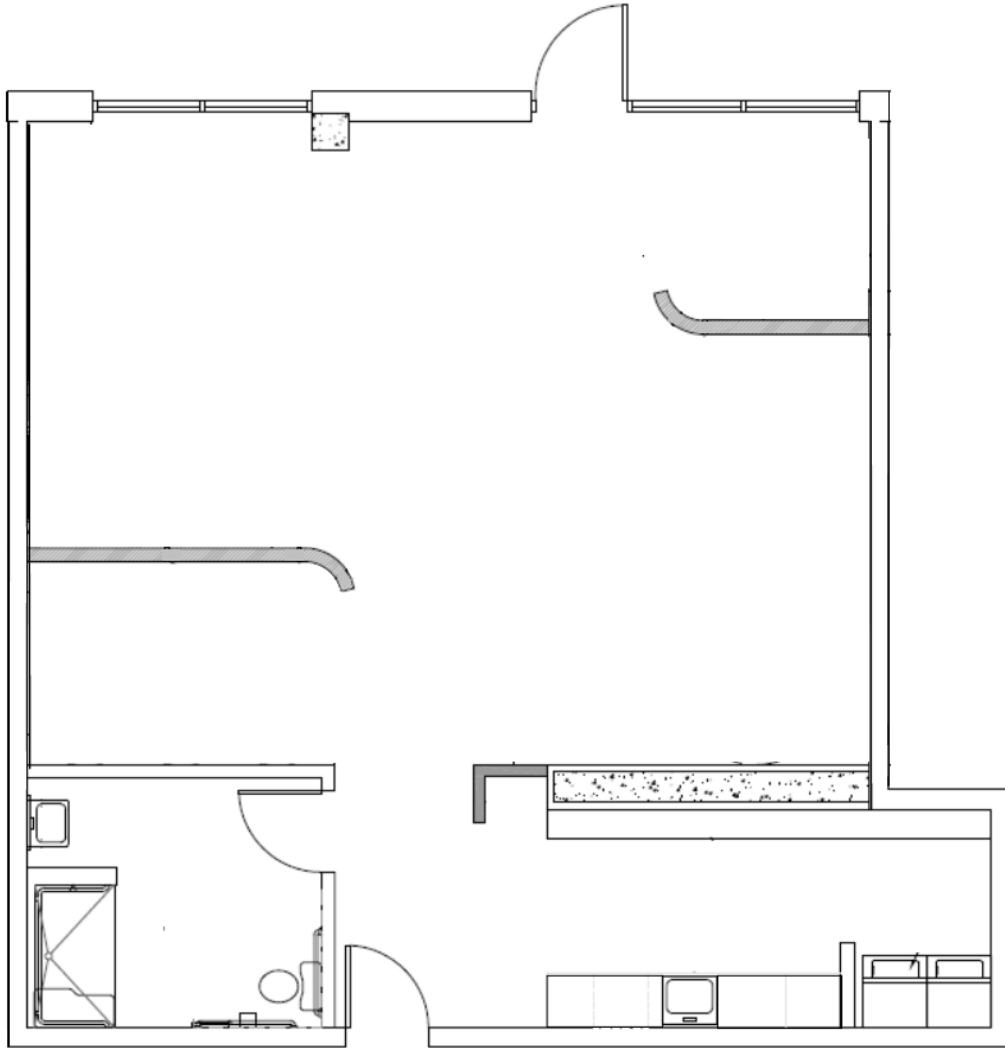
ANDREW PIENOVI
Founder/ Owner | Principal Broker

M: 503.913.1200
apienovi@cirevg.com

CHRISTIE'S
INTERNATIONAL REAL ESTATE
— EVERGREEN —

THE COSMOPOLITAN

1022 NW Overton Street



1,023 Sq Ft

Full Bath

Kitchenette

Washer/Dryer

Storage Cabinets