

FOR LEASE

902 S Eastern Blvd

Fayetteville, NC 28306

8,000 SF Truck Terminal & Cross Dock Facility

±2 Acres

Site Area

Secured

Fully Fenced

Cross Dock

Double Loaded

CALL BROKER FOR RATES

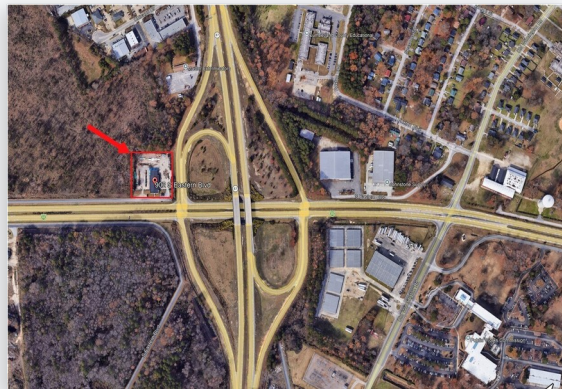
Jon Bockman

425-417-5391





Exterior — Office & Loading Docks



PROPERTY DETAILS

Address:	902 S Eastern Blvd, Fayetteville, NC 28306
Property Type:	Truck Terminal / Cross Dock Warehouse
Building Size:	±8,000 SF
Site Area:	±2 Acres
Facility:	Double-Loaded Cross Dock Warehouse
Special Feature:	Truck Maintenance Facility
Security:	Fully Secured & Fenced Site
Rate:	Call Broker for Rates

PROPERTY HIGHLIGHTS

- ▶ Double-loaded cross dock design for efficient freight handling
- ▶ Dedicated truck maintenance / repair facility on site
- ▶ Fully secured, perimeter fenced yard — ideal for fleet operations
- ▶ Signalized intersection access at S Eastern Blvd & Hwy 87
- ▶ Abundant trailer storage & maneuvering area on ±2 acre site
- ▶ Immediate proximity to Fort Liberty (formerly Fort Bragg)
- ▶ Strong regional logistics corridor in Cumberland County



Exterior — Dock Side View



Exterior — Truck Court & Yard



Warehouse Interior — Cross Dock



Office Interior

LOCATION & ACCESS

Fayetteville, NC — Strategic Logistics Hub

- ▶ Hwy 87 & S Eastern Blvd — signalized intersection
- ▶ Minutes from Fort Liberty (Fort Bragg) main gates
- ▶ Direct access to US-301, I-95 corridor nearby
- ▶ Cumberland County — major SE NC distribution hub
- ▶ Adjacent to established industrial/logistics corridor
- ▶ High daily traffic count — exceptional visibility

CONTACT FOR AVAILABILITY & RATES

Jon Bockman

425-417-5391



Warehouse / Cross Dock Interior