

Available

**The
TEMPLES
Company**

912-538-7000

0.74 Acre Outparcel - Bremen, GA

US Hwy 27

Bremen, GA 30110

(Latitude, Longitude)

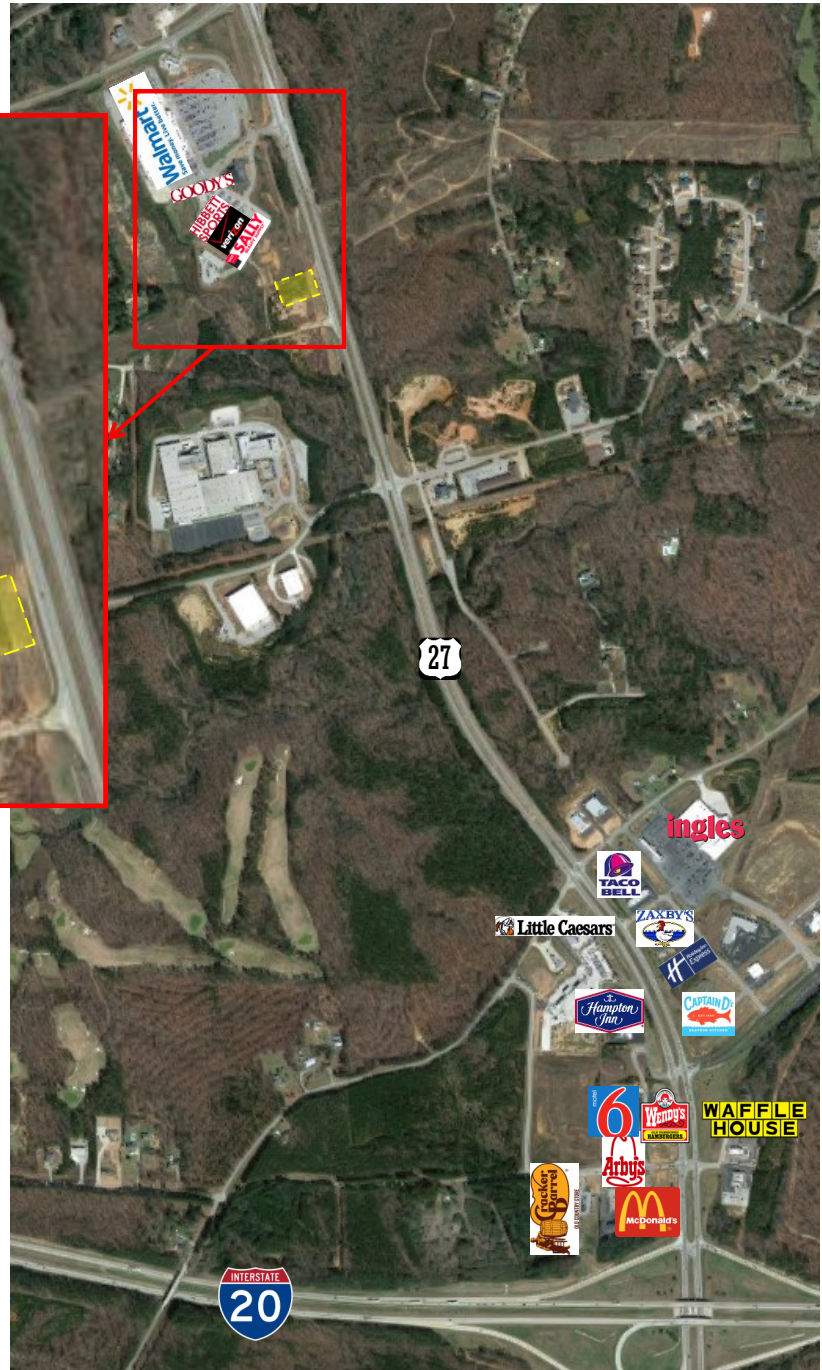
(33.70701, -85.16036)

AVAILABLE:

0.74 acres

\$295,000.00

- Located 1.3 miles north of I-20
- Utilities available
- Near Wal-Mart



DEMOGRAPHICS:

	5 miles	10 miles
2017 Population:	18,002	85,604
2017 Households:	6,518	31,298
2017 Median HH Income:	\$71,162	\$66,333

TRAFFIC COUNTS:

Street:	Daily Count:
US Hwy 27:	30,900

*Please contact our office for
additional information.*

The Temples Company

PO Box 405

301 Mosley Street (30474)

Vidalia, GA 30475

(912) 538-7000

www.thetemplescompany.com

* This information has been obtained from sources believed reliable. While we do not doubt its accuracy, we have not verified it and make no guarantee or representation about the information. It is your responsibility to independently confirm its accuracy and completeness. 2511NOV