

66 W. Main St. Somerville, NJ 08876
Somerset County

EXCLUSIVE FOR LEASE

1750 SF Retail Store



PROPERTY DESCRIPTION

1750 SF Street Level Retail Store, in the Heart of Award-Winning Downtown Somerville, a Vibrant Walkable Main Street with a Mix of Retail, Specialty Shops, Cafes and a Variety of Restaurants. Borough Parking Lot Directly Behind Store.

Located in B-1 Zone Permitted Uses include Retail stores, Paint, Hardware, Clothing, Auto & Home Supply, Home Furnishings, Appliance Stores and more.

OFFERING SUMMARY

Price for Lease:	\$26/SF
Building size:	4,730 SF
Block, Lots:	Blk: 114 Lot: 22
Parking:	On-Street Parking, Borough Parking Lots
Zone:	B-1 Central Business District

PROPERTY HIGHLIGHTS

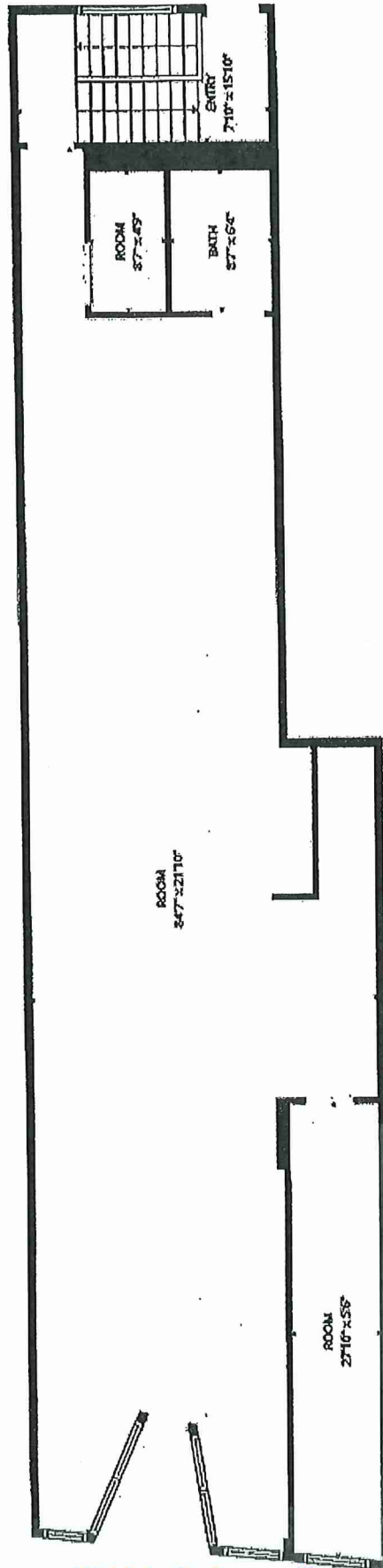
- Downtown Somerville is a Vibrant Walkable Main Street with a mix of Retail, Specialty Shops, Cafes and a Variety of Restaurants.
- Two Blocks from NJ Transit Somerville Station
- Location minutes to all major highways-

DEMOGRAPHICS	1 MILE	3 MILES	5 MILES
Total Households	4,243	22,235	47,026
Median Age:	40.1	41.8	42.8
Total Population	10,073	60,186	126,814
Average HH Income	159,723	166,916	181,104

Timothy P. Deluccia
Broker Associate
908-938-6405
tim@delucciacommercialgroup.com

Deluccia Commercial Group
1996 Washington Valley Rd.
PO Box 305
Martinsville, NJ 08836

Borough Parking Lot



W. Main St. Somerville

66 W. Main St. Somerville NJ 08876

