



SAN FRANCISCO, CA 94107

956 Folsom St.

FOR SALE

9,000 SF AVAILABLE
Industrial Creative Space
Featuring Drive-In Access

SCOTT MASON

President
Email: scott@calcosf.com
Cell: 415.215.1937
DRE #01036610

LIV MASON

Associate
Email: liv@calco-sf.com
Cell: 650.787.2364
DRE #02245475

We're Here to Help – Reach Out Today!

425 2nd St. Suite 450, San Francisco, CA 94107 | info@calcosf.com | (415) 970-0000 | calcosf.com

HIGHLIGHTS

| 956 Folsom St.

LOT SIZE
4,250 SQUARE FEET

ZONING
MUR - MIXED-USE RESIDENTIAL

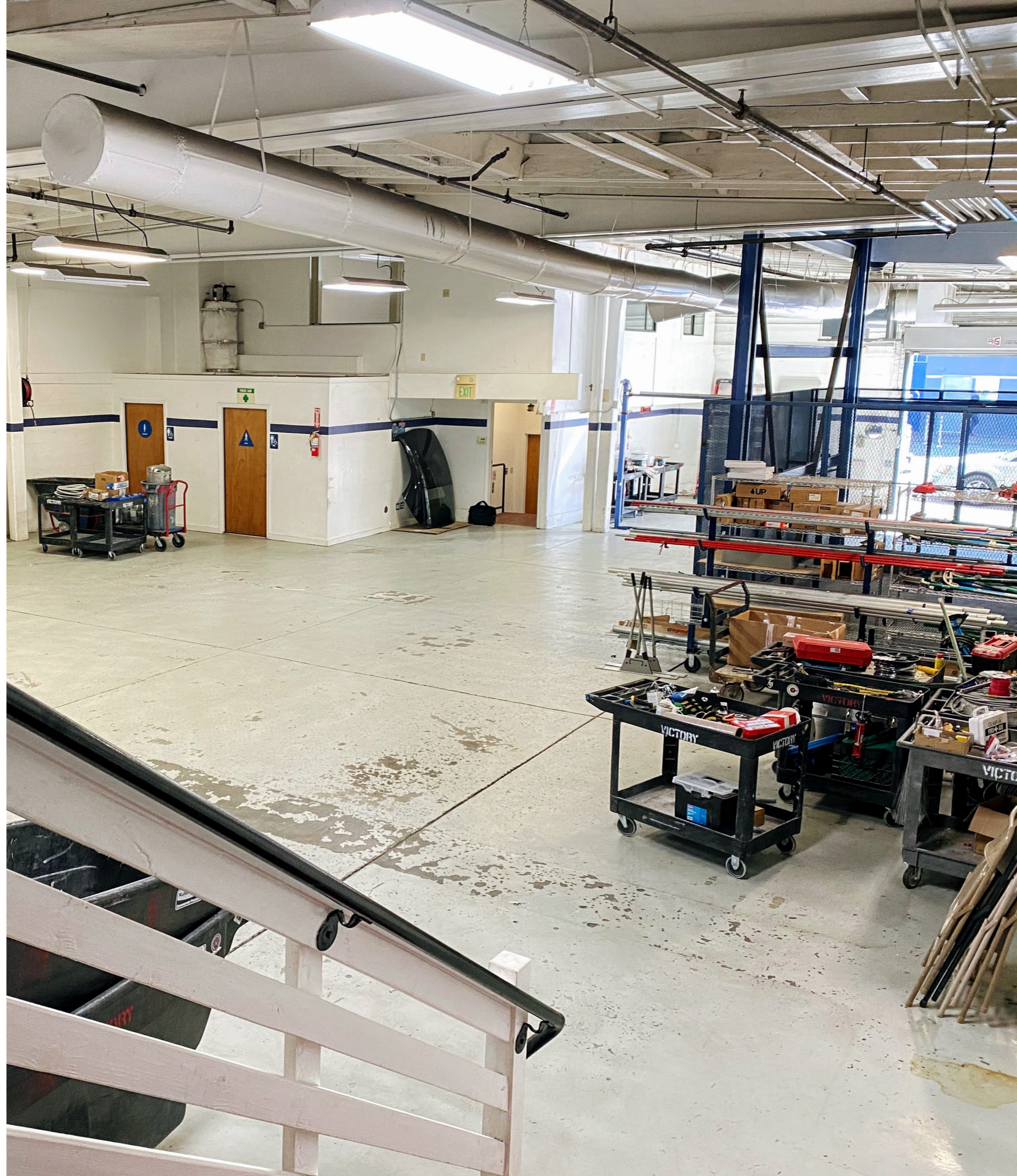
APN
3732-024

SALE PRICE
\$3,650,000 (\$405.56/SF)

BUILDING FEATURES

- One (1) Drive-in Door
- Industrial Lift
- 3 Phase / 400 AMPS
- High Ceilings
- Sprinklered

 **CALCO**
COMMERCIAL, INC.



GALLERY

| 956 Folsom St.



GALLERY

| 956 Folsom St.



LOCATION OVERVIEW

| 956 Folsom St.

Prime location in the heart of San Francisco's SOMA district — surrounded by leading tech offices, creative hubs, dining, and nightlife, with excellent access to public transit and major highways.



03 MIN to Powell Street
BART / MUNI

05 MIN to Westfield San
Francisco Centre

06 MIN to Yerba Buena
Gardens



03 MIN to Union Square

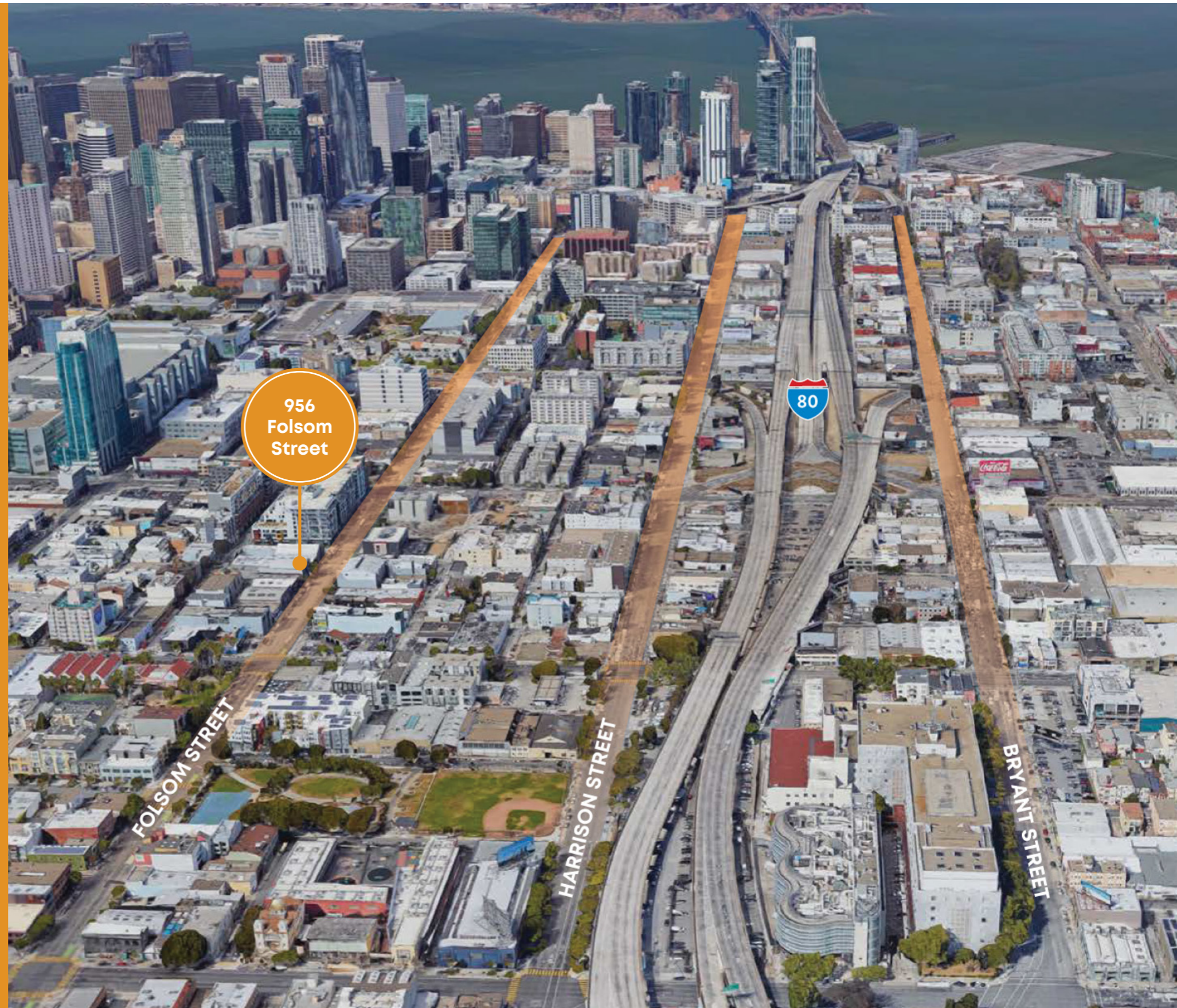
05 MIN to Financial District

08 MIN to Mission District



02 MIN to I-80 On-Ramp

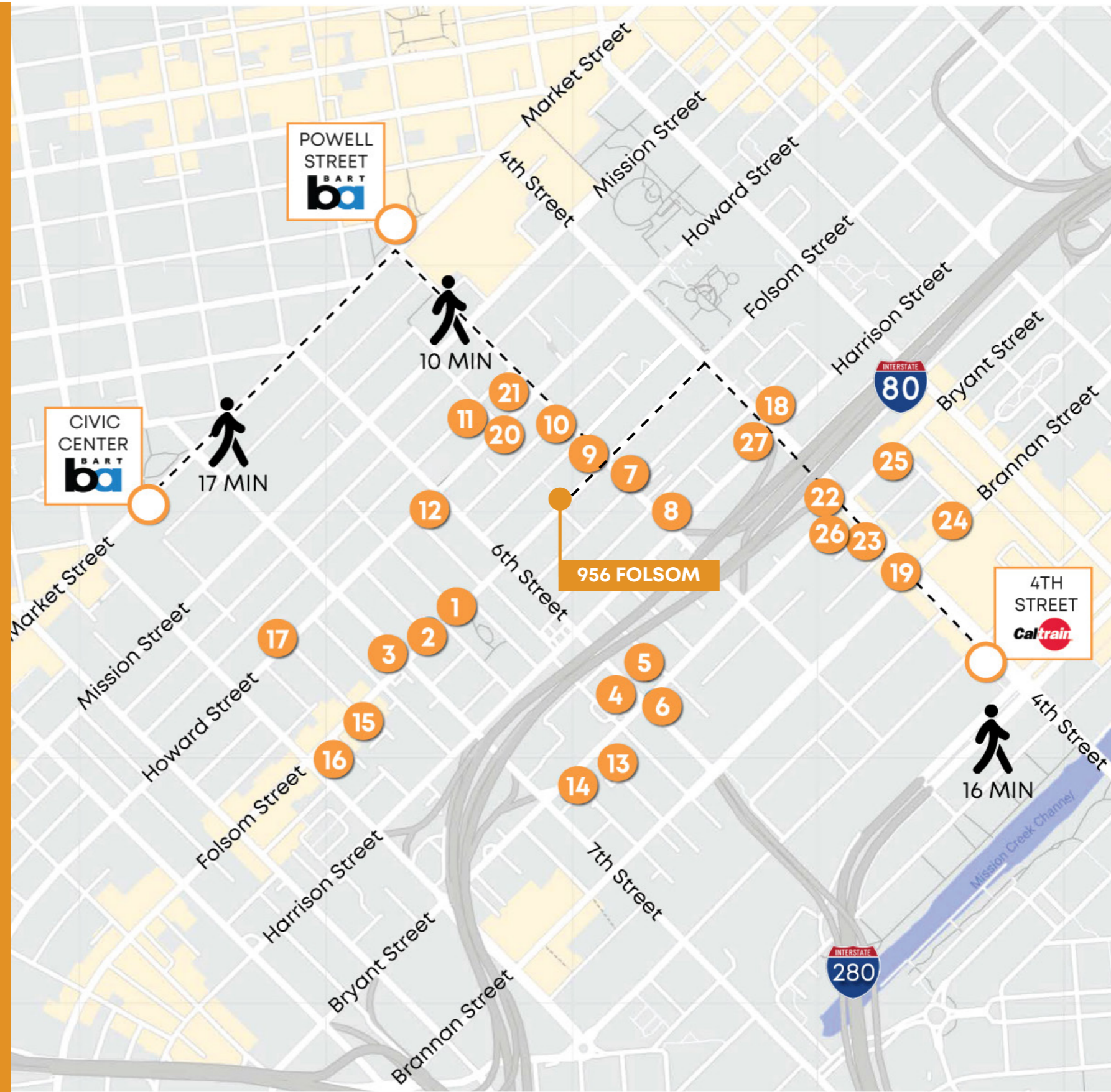
04 MIN to 101 / 280 Access



NEARBY AMENITIES

| 956 Folsom St.

- 1 Deli Board
- 2 Extreme Pizza
- 3 Sightglass Coffee
- 4 Social Cafe
- 5 AyDea
- 6 Pho de Nguyen
- 7 City's Choice Cafe
- 8 All Star Donuts
- 9 Dragon Horse
- 10 Mr. East Kitchen
- 11 Tempest Bar & Box Kitchen
- 12 Bini's Kitchen
- 13 Kiss My Seoul
- 14 Dinosaur Sandwiches
- 15 Basil Thai
- 16 San Francisco Pole and Dance
- 17 Enterprise Brewing Co.
- 18 Whole Foods Market
- 19 Marlowe
- 20 Tin
- 21 The Chieftain Irish Pub
- 22 Thriller Social Club
- 23 Taksim
- 24 Brickhouse Cafe & Bar
- 25 Black Hammer Brewing Company
- 26 Que Viet
- 27 Delah Coffee





SCOTT MASON

President
Email: scott@calcosf.com
Cell: 415.215.1937
DRE #01036610

LIV MASON

Associate
Email: liv@calco-sf.com
Cell: 650.787.2364
DRE #02245475

**PIONEERING REAL ESTATE SOLUTIONS
WITH PROVEN EXPERTISE**

Calco Commercial, founded in 2011 by Scott Mason, brings over 35 years of experience and 2,500+ transactions, totaling over \$2.2 billion in sales and leases. Specializing in leasing and sales of commercial real estate in the San Francisco Bay Area and nationwide, we consistently rank as a top-producing firm. With deep knowledge of the Bay Area market, our team offers clients over three decades of expertise and exceptional customer service, providing the tools and guidance to navigate the ever-changing commercial real estate landscape.