

15.9 ACRES - OXFORD CITY LIMITS INCLUDES TRACT 1 & TRACT 2



J.MORRISREALTY

662 538 5700

www.jmorrisrealty.com



DETAILS

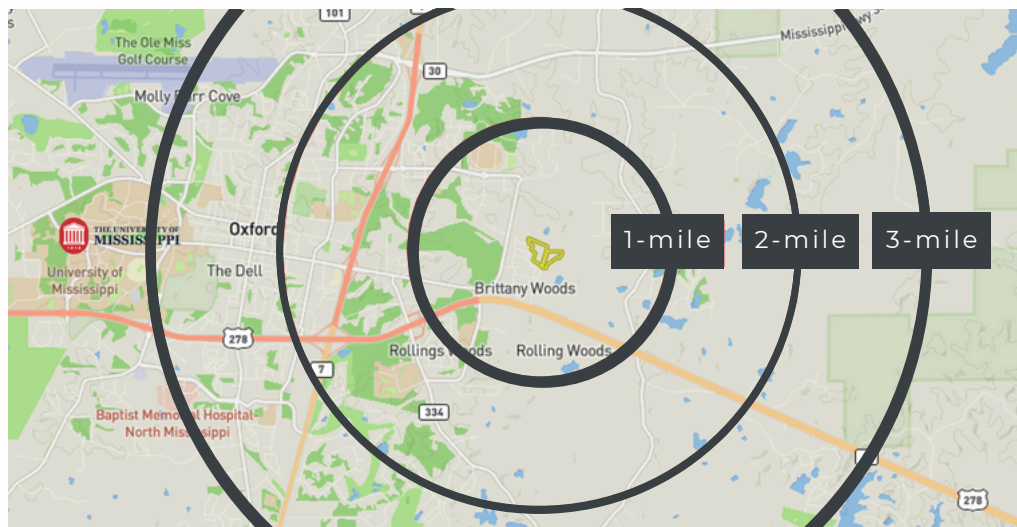
- **Tract 1:**
 - ±10.06 Acres
 - \$750,000
- **Tract 2:**
 - 5.887 Acres
 - \$442,000

PROPERTY FEATURES

- Oxford School District
- Zoned Neighborhood Residential District (NR)
- Within 3-mi radius:
 - The University
 - The Square

JMR
J.MORRISREALTY
662-538-5700
contact@jmorrisrealty.com

James Morris
Real Estate Broker
662-316-7000
jed@jmorrisrealty.com



DISCLAIMER: ALL INFORMATION PROVIDED IS SUBJECT TO VERIFICATION. WHILE CONSIDERED RELIABLE, WE CANNOT GUARANTEE ITS ACCURACY. RECIPIENTS ARE RESPONSIBLE FOR PERFORMING THEIR OWN VERIFICATION TO ENSURE THAT ALL DETAILS MEET THEIR NEEDS.



J. MORRIS REALTY

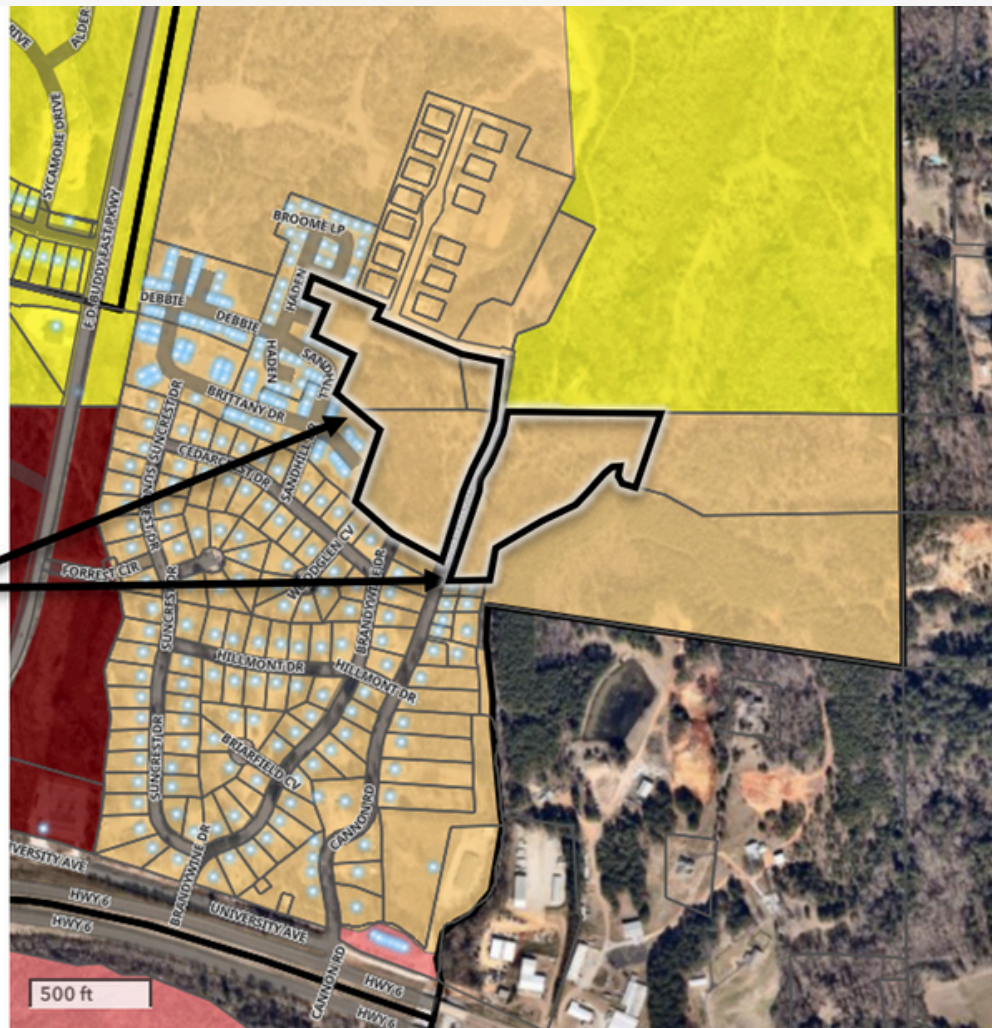
662 538 5700

www.jmorrisrealty.com



Zoning

- (AG) Agricultural
- (ER) Estate Residential District
- (HUCN) Historic Urban Center District
- (IND) Industrial
- (INST-E) Institutional - Education
- (INST-G) Institutional - Government
- (INST-M) Institutional - Medical
- (INST-POS) Institutional - Public Parks and Open Space
- (LTNB) Legacy Traditional Neighborhood Business District
- (NR) Neighborhood Residential District
- (RCN) Rural Center
- (SCN) Suburban Center District
- (SCO) Suburban Corridor District
- (SMF) Suburban Multi-Family District
- (SR) Suburban Residential District
- (TER) Traditional Estate Residential District
- (TNB) Traditional Neighborhood Business District
- (TNR) Traditional Neighborhood Residential District

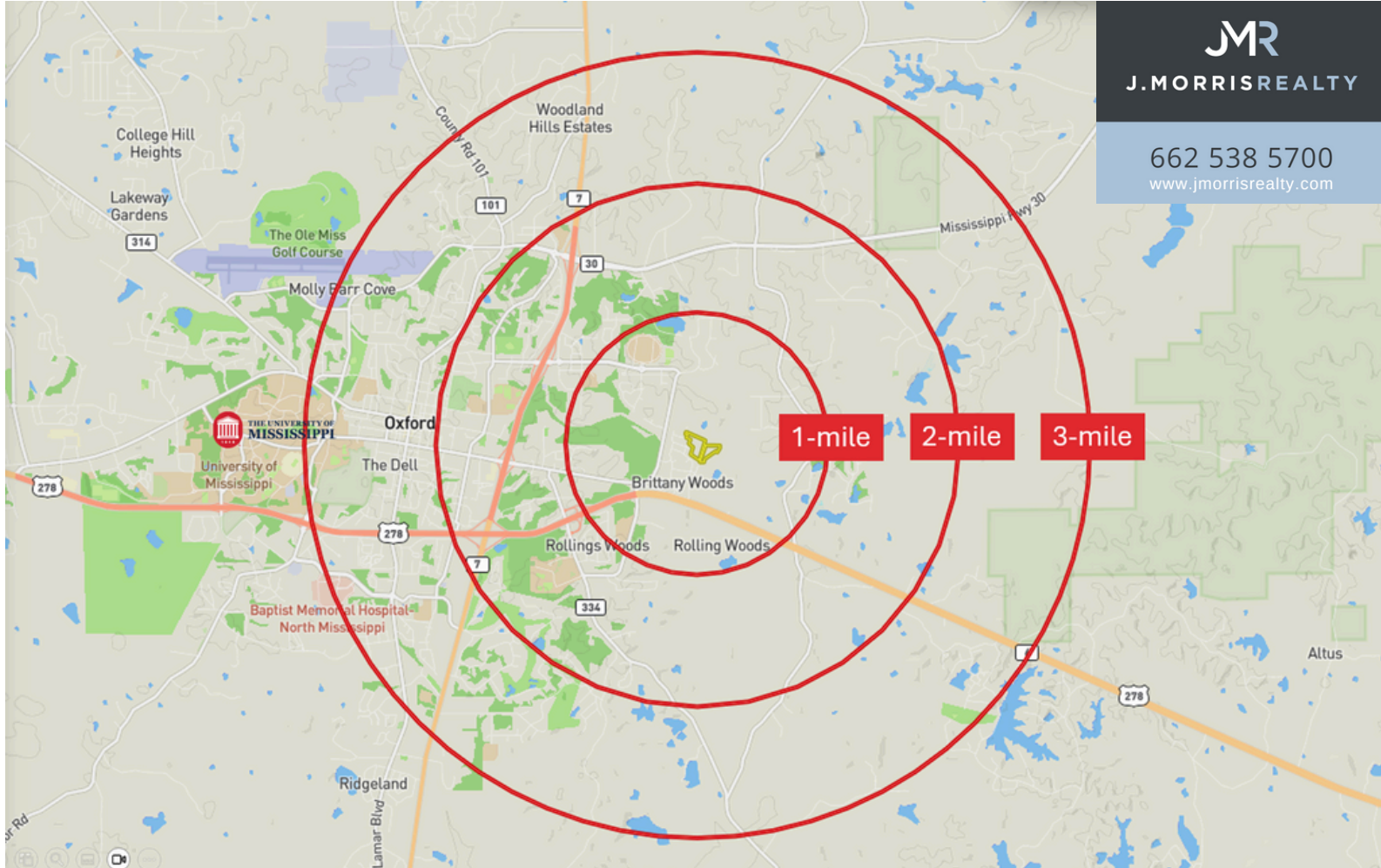


DISCLAIMER: ALL INFORMATION PROVIDED IS SUBJECT TO VERIFICATION. WHILE CONSIDERED RELIABLE, WE CANNOT GUARANTEE ITS ACCURACY. RECIPIENTS ARE RESPONSIBLE FOR PERFORMING THEIR OWN VERIFICATION TO ENSURE THAT ALL DETAILS MEET THEIR NEEDS.



J. MORRIS REALTY

662 538 5700
www.jmorrisrealty.com



DISCLAIMER: ALL INFORMATION PROVIDED IS SUBJECT TO VERIFICATION. WHILE CONSIDERED RELIABLE, WE CANNOT GUARANTEE ITS ACCURACY. RECIPIENTS ARE RESPONSIBLE FOR PERFORMING THEIR OWN VERIFICATION TO ENSURE THAT ALL DETAILS MEET THEIR NEEDS.

Median Estimated Home Value

This chart displays property estimates for an area and a subject property, where one has been selected. Estimated home values are generated by a valuation model and are not formal appraisals.

Source: Valuation calculations based on public records and MLS sources where licensed

Update Frequency: Monthly



12 mo. Change in Median Estimated Home Value

This chart shows the 12-month change in the estimated value of all homes in this area, the county and the state. Estimated home values are generated by a valuation model and are not formal appraisals.

Source: Valuation calculations based on public records and MLS sources where licensed

Update Frequency: Monthly



Median Listing Price

This chart displays the median listing price for homes in this area, the county, and the state.

Source: Listing data

Update Frequency: Monthly



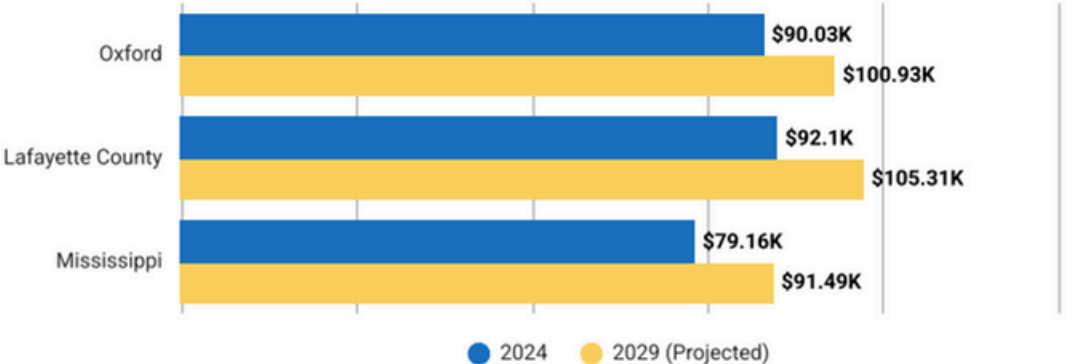
Income

Source: U.S. Census American Community Survey via Esri, 2024

Update Frequency: Annually

Average Household Income

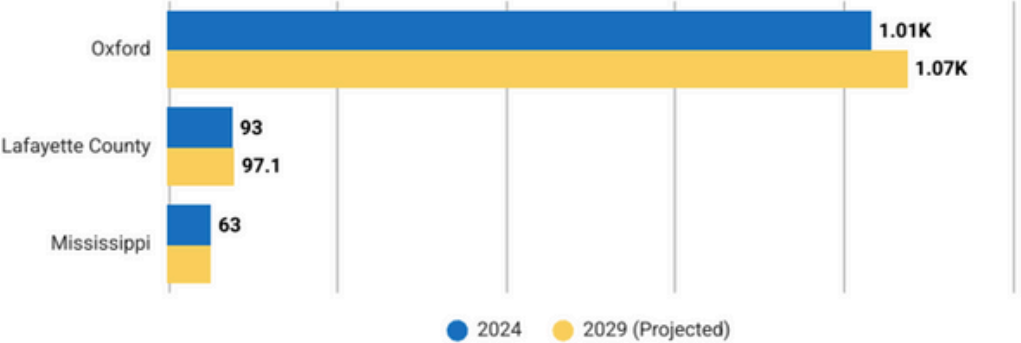
This chart shows the average household income in an area, compared with other geographies.



Source: U.S. Census American Community Survey via Esri, 2024
Update Frequency: Annually

Population Density

This chart shows the number of people per square mile in an area, compared with other geographies.



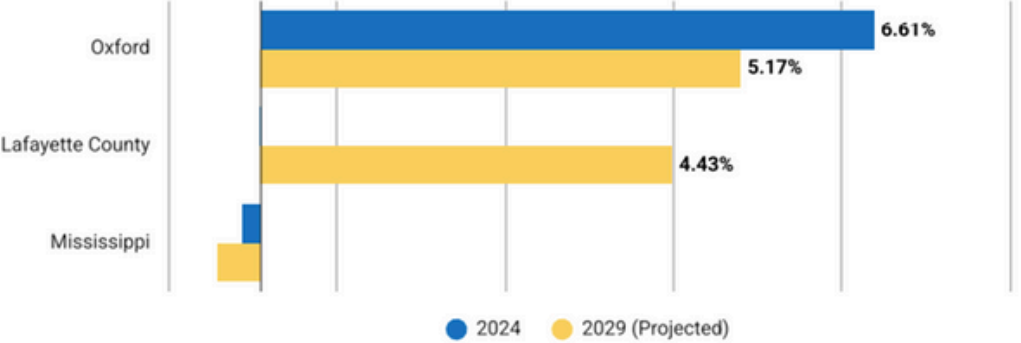
Daytime Population Density

This chart shows the number people who are present in an area during normal business hours, including workers, per square mile in an area, compared with other geographies. Daytime population is in contrast to the "resident" population present during evening and nighttime hours.



Population Change Since 2020

This chart shows the percentage change in area's population from 2020 to 2024, compared with other geographies.



Average Household Size

This chart shows the average household size in an area, compared with other geographies.

