



741 GLENVIA ST.

GLENDALE, CA 91206

OFFICE SUITE FOR LEASE



TONY MANISCALCHI, SIOR | C: 818.606.8606 | CalDRE #00630926 | tonymaniscalchi@gmail.com
MIKE MANISCALCHI, SIOR | C: 818.427.9934 | CalDRE #01097943 | mike@systemsrealestate.com



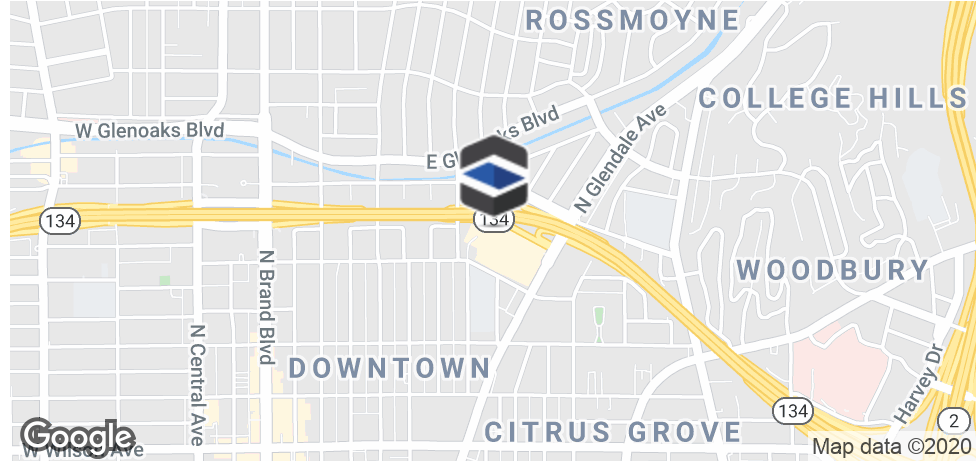
SYSTEMS REAL ESTATE
MANAGEMENT, INC.
SALES • LEASING • MANAGEMENT

SYSTEMS REAL ESTATE MANAGEMENT, INC. | 700 N. BRAND BLVD., SUITE 260, GLENDALE, CA 91203 | DRE# 01875861 | 818.500.4900 | SYSTEMSREALESTATE.COM



741 GLENVIA ST. SUITE 102

GLENDALE, CA 91206



OFFERING SUMMARY

Lease Rate:	\$2,700.00 per month \$2.81 SF/MO Full Service Gross
Building Size:	11,802 SF
Available SF:	960 SF
Suite # 102	960 SF

PROPERTY OVERVIEW

Downtown Glendale without the Downtown Price....Freestanding 2 -Story Building elevatorserved in North Glendale. With Immediate access to 134/2/210 & 5 Freeways 741 Glenvia will deliver a quality property at competitive pricing and flexible lease terms. The property is located in the the North Glendale area and walking distance to Downtown Glendale and all amenities Glendale has to offer. Only block to City Hall, The American at Brand, Glendale Galleria & the Brand Blvd of Cars, 741 offers modern amenities in a quiet neighborhood setting that offers privacy and accessibility.

PROPERTY HIGHLIGHTS

- Easy 134/2/210 & 5 Fwy Access
- Suite will utilize common area restrooms
- High Visibility and multiple restaurants and shops within walking distance
- Elevator & 24 Hour Access

All information provided herein (including but not limited to square footage calculations and zoning) together with any projections or other data has been furnished from sources which we deem reliable, but for which we assume no liability, expressed or implied. Interested parties (including but not limited to buyer or tenant) to conduct independent investigation of all information and to verify all information. The information provided herein is for reference only and is not deemed to be conclusive.

TONY MANISCALCHI, SIOR | C: 818.606.8606 | CalDRE #00630926 | tonymaniscalchi@gmail.com
MIKE MANISCALCHI, SIOR | C: 818.427.9934 | CalDRE #01097943 | mike@systemsrealestate.com



SYSTEMS REAL ESTATE
MANAGEMENT, INC.
SALES • LEASING • MANAGEMENT



741 GLENVIA ST. SUITE 102

GLENDALE, CA 91206



SUITE 102

SUITE DETAILS

Approx. 960 sq. ft.

Lease Term: 1-5 Years

Lease Rate:

\$2,700.00 per month

\$2.81 SF/MO

Full Service Gross

Open office space, one attached storage/utility closet.

Parking: Attached lot

TONY MANISCALCHI, SIOR | C: 818.606.8606 | CalDRE #00630926 | tonymaniscalchi@gmail.com

MIKE MANISCALCHI, SIOR | C: 818.427.9934 | CalDRE #01097943 | mike@systemsrealestate.com



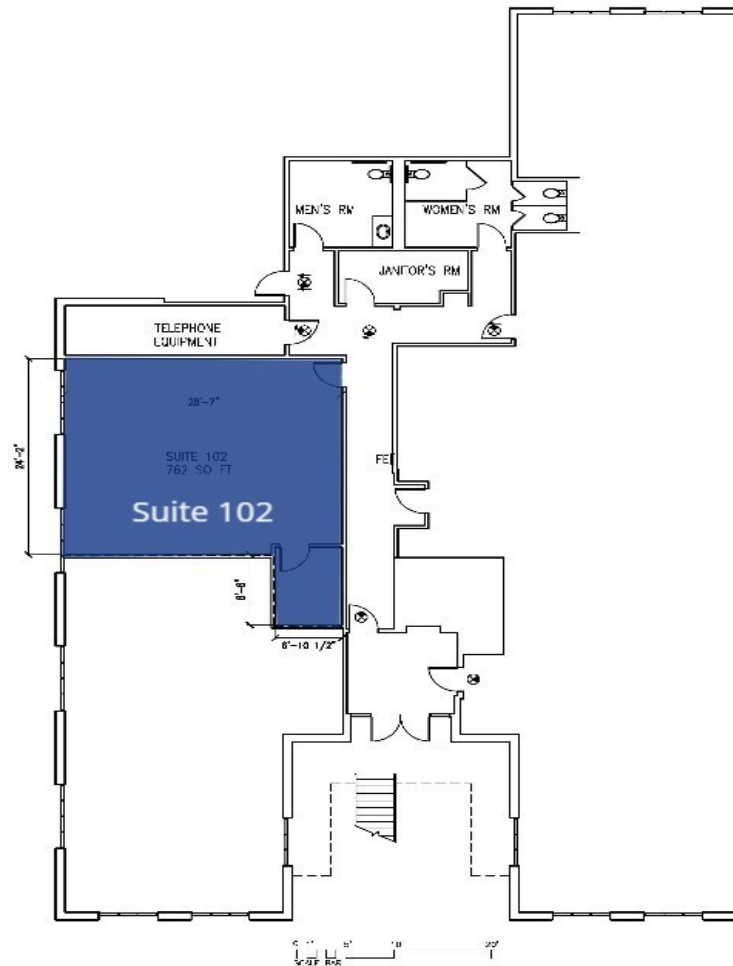
SYSTEMS REAL ESTATE
MANAGEMENT, INC.
SALES • LEASING • MANAGEMENT



741 GLENVIA ST. SUITE 102

GLENDALE, CA 91206

OFFICE SUITE FOR LEASE



TONY MANISCALCHI, SIOR | C: 818.606.8606 | CalDRE #00630926 | tonymaniscalchi@gmail.com
MIKE MANISCALCHI, SIOR | C: 818.427.9934 | CalDRE #01097943 | mike@systemsrealestate.com

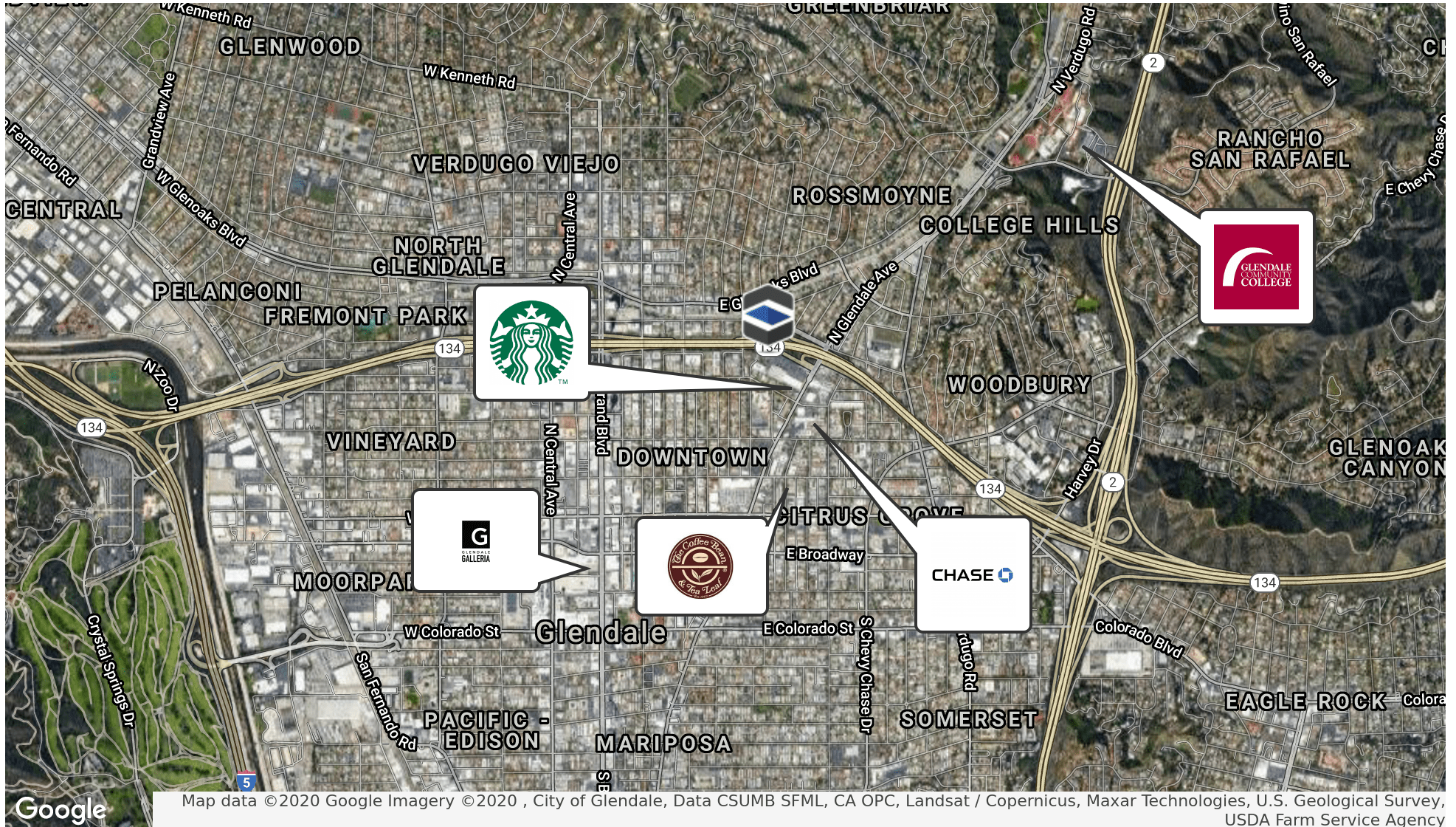


SYSTEMS REAL ESTATE
MANAGEMENT, INC.
SALES • LEASING • MANAGEMENT



741 GLENVIA ST.

GLENDALE, CA 91206



TONY MANISCALCHI, SIOR | C: 818.606.8606 | CalDRE #00630926 | tonymaniscalchi@gmail.com
 MIKE MANISCALCHI, SIOR | C: 818.427.9934 | CalDRE #01097943 | mike@systemsrealestate.com



SYSTEMS REAL ESTATE
 MANAGEMENT, INC.
 SALES • LEASING • MANAGEMENT