

242

EAST 72ND STREET

BETWEEN SECOND AND THIRD AVENUES

MEDICAL/OFFICE SPACE FOR LEASE



THE DANA COMMERCIAL TEAM
EST. 1991
Douglas Elliman
REAL ESTATE

PROPERTY DETAILS

PREMISES

Ground Floor: 1,300 square feet
Outdoor Patio: 300 square feet

TERM

Long Term

POSSESSION

Immediate

CEILINGS

9 Feet

TENANT

Previously Psychology Office

ASKING RENT

\$6,000 per month

FEATURES

This Medical Office is situated between Second and Third Avenues in a beautiful pre-war residential apartment building. The building features 24 hour access and a stunningly renovated lobby with friendly building staff who will greet your patients as they enter.

The space is currently laid out with a reception area, waiting room, two exam rooms, two bathrooms, a consult, lab, and a kitchen. It was formerly used as a neurologists office, and is suited for various uses and specialties utilizing the current layout, or it can be reconfigured to your own needs.

Exclusively Represented by:

THE DANA COMMERCIAL TEAM

AT DOUGLAS ELLIMAN REAL ESTATE

GARY DANA

212.692.6183

gdana@elliman.com

RICK DANA

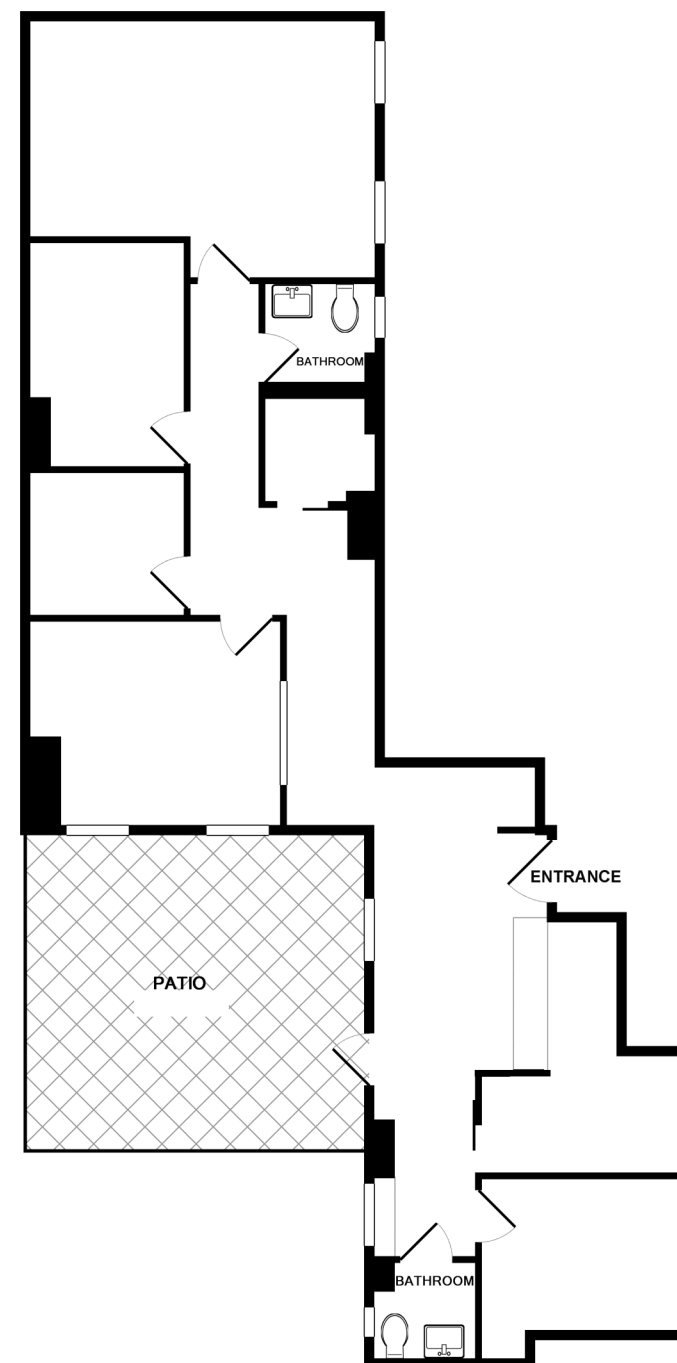
212.692.6182

rdana@elliman.com


CHRIS DANA

212.455.4721

cdana@elliman.com



ALL MEASUREMENTS ARE APPROXIMATE

575 MADISON AVENUE, NY, NY 10022. 212.891.7000 © 2020 DOUGLAS ELLIMAN REAL ESTATE. ALL MATERIAL PRESENTED HEREIN IS INTENDED FOR INFORMATION PURPOSES ONLY. WHILE, THIS INFORMATION IS BELIEVED TO BE CORRECT, IT IS REPRESENTED SUBJECT TO ERRORS, OMISSIONS, CHANGES OR WITHDRAWAL WITHOUT NOTICE. ALL PROPERTY INFORMATION, INCLUDING, BUT NOT LIMITED TO SQUARE FOOTAGE, ROOM COUNT, NUMBER OF BEDROOMS AND THE SCHOOL DISTRICT IN PROPERTY LISTINGS SHOULD BE VERIFIED BY YOUR OWN ATTORNEY, ARCHITECT OR ZONING EXPERT. IF YOUR PROPERTY IS CURRENTLY LISTED WITH ANOTHER REAL ESTATE BROKER, PLEASE DISREGARD THIS OFFER. IT IS NOT OUR INTENTION TO SOLICIT THE OFFERINGS OF OTHER REAL ESTATE BROKERS. WE COOPERATE WITH THEM FULLY. EQUAL HOUSING OPPORTUNITY. 



THE DANA COMMERCIAL TEAM
Douglas Elliman EST. 1911
REAL ESTATE