

FOR LEASE

21 West Road



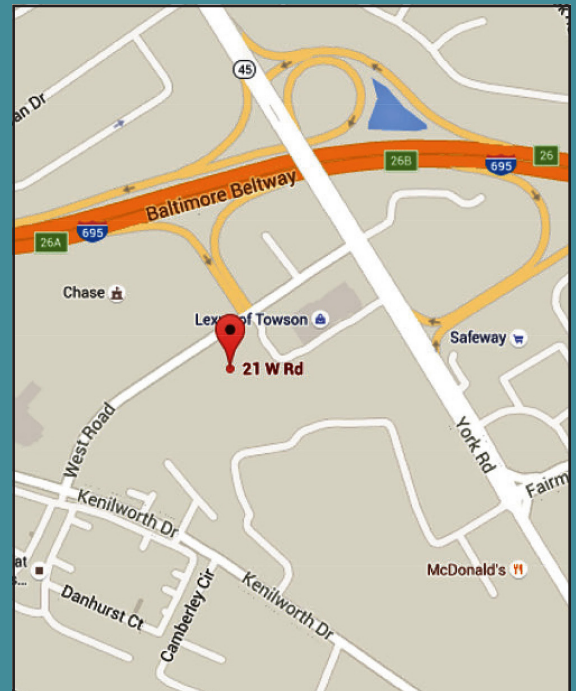
MANAGEMENT, INC

21 WEST ROAD

Towson, Maryland 21204

AVAILABLE FOR LEASE

- 1,350 - 2,954 RSF
- Suite 100: 1,872 RSF (Medical)
- Suite 111: 1,350 RSF
- Suite 150: 1,604 RSF
- \$22.50 PSF - Full Service
- 2 Story Medical/Office Building
- 4 Parking Spaces per 1,000 Square Foot
- Strategically located near the intersection of Baltimore Beltway (I-695) and York Road (Rt 45)



FOR INFORMATION CONTACT:

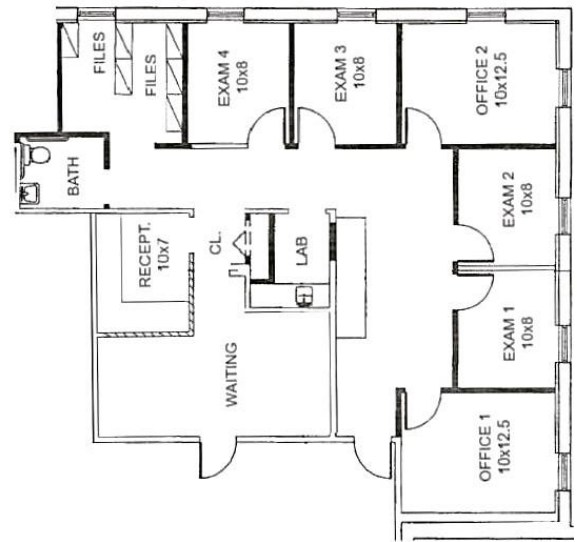
Robert J. Licata | 410.583.8905 | rjlicata@ccimgmt.com

WHILE WE HAVE NO REASON TO DOUBT THE ACCURACY OF ANY OF THE INFORMATION SUPPLIED, WE CANNOT, AND DO NOT, GUARANTEE ITS ACCURACY. ALL INFORMATION SHOULD BE INDEPENDENTLY VERIFIED PRIOR TO A PURCHASE OR LEASE OF THE PROPERTY. WE ARE NOT RESPONSIBLE FOR ERRORS, OMISSIONS, MISUSE, OR MISINTERPRETATION OF INFORMATION CONTAINED HEREIN & MAKE NO WARRANTY OF ANY KIND, EXPRESS OR IMPLIED, WITH RESPECT TO THE PROPERTY OR ANY OTHER MATTERS.

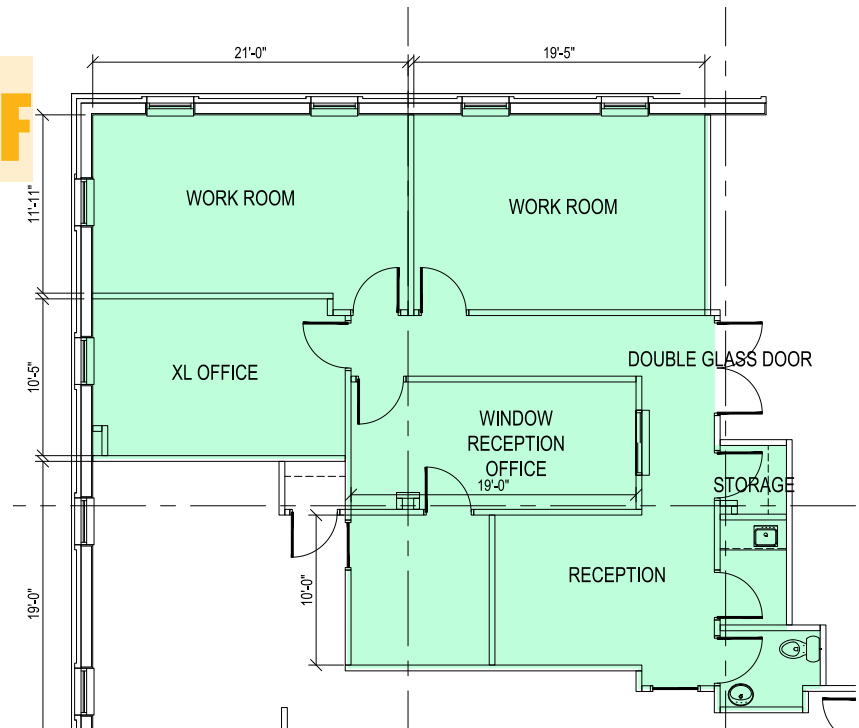
ccim MANAGEMENT, INC

PNC-Towson Building
409 Washington Avenue, Suite 615
Towson, Maryland 21204
410.583.9600

SUITE 100: 1,772 RSF



SUITE 150: 1,604 RSF



SUITE 111: 1,350 RSF

