

FOR SUBLEASE 16,918 SF

ORLANDO CENTRAL PARK VII

2901 TITAN ROW
ORLANDO, FL 32809



FOR LEASE

SUITE 118

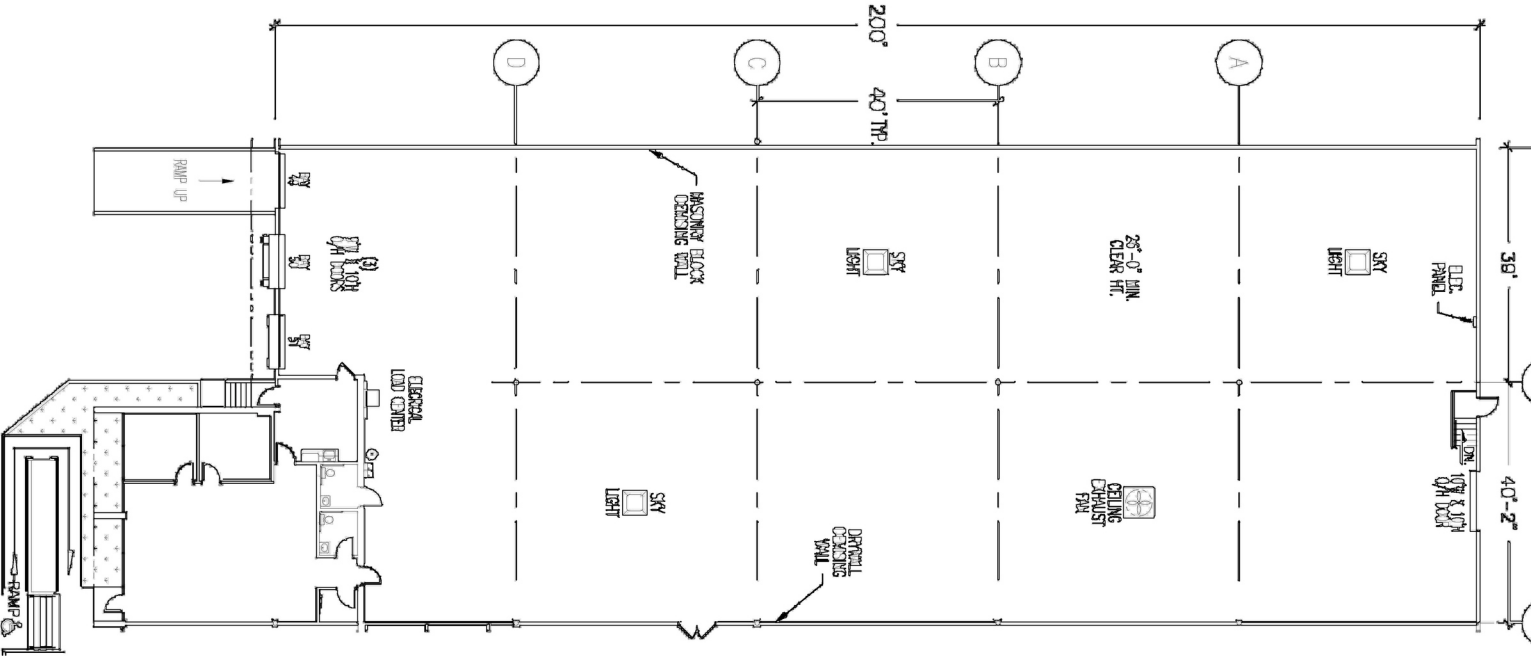
LEASE ENDS APRIL 2027



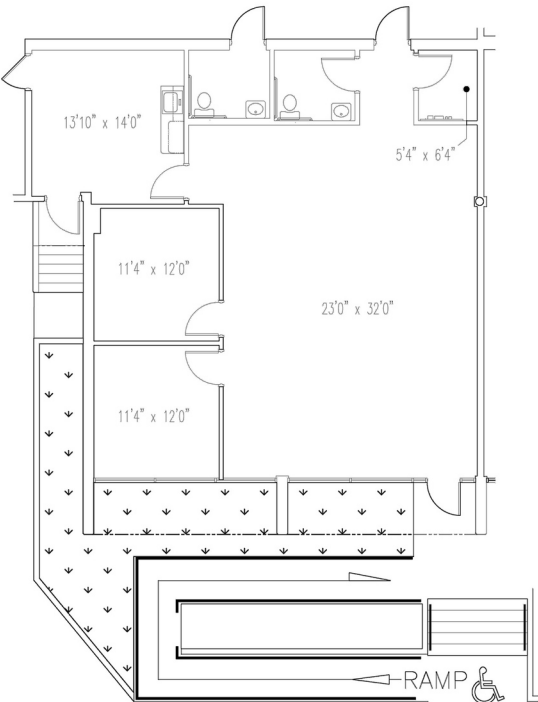
LEASED BY



SUITE 118 | 16,918 SF

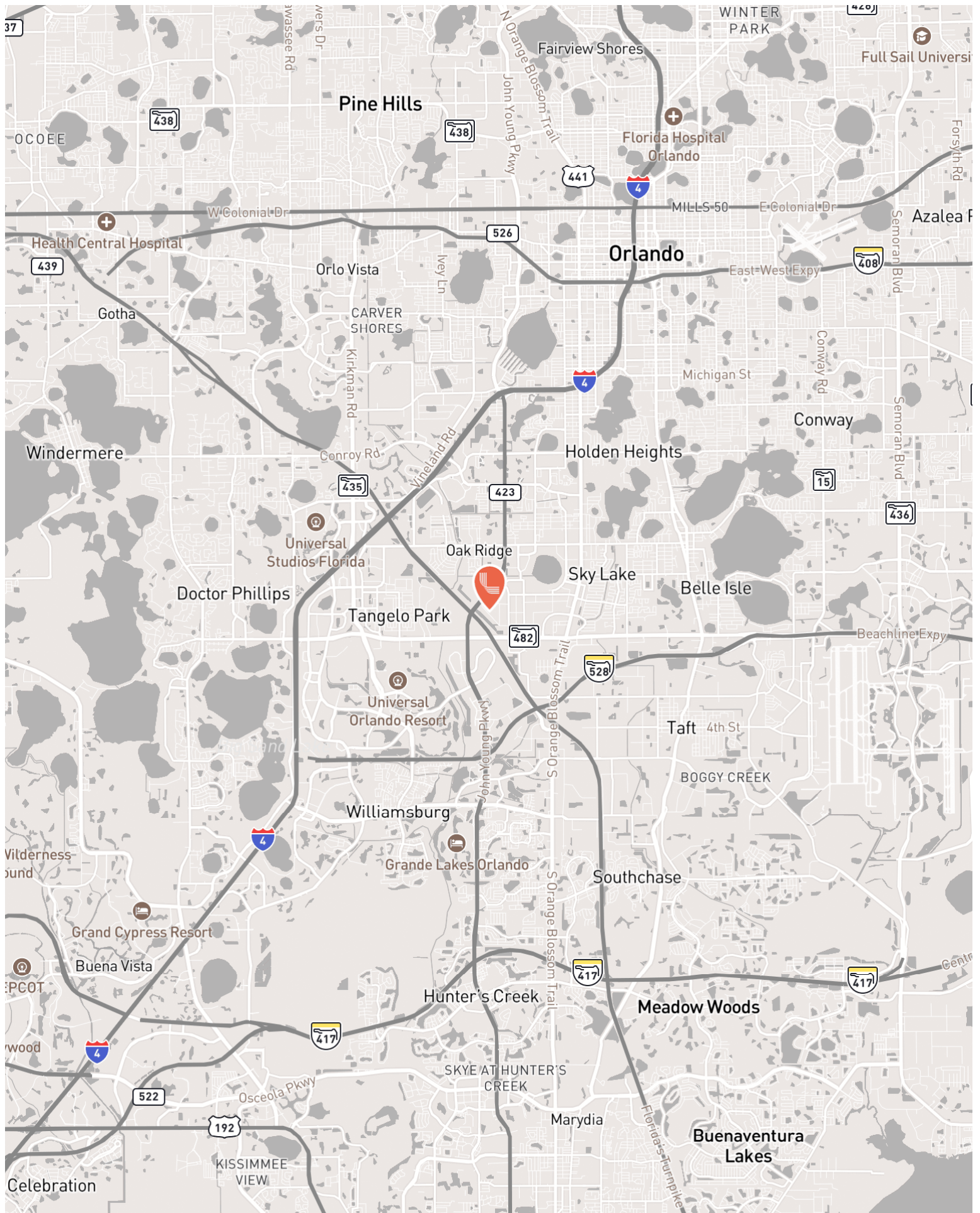


OFFICE | 1,471 SF



THE LISTING

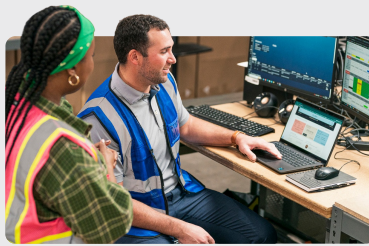
Building Size:	267,432 SF
Building Type:	Front Load
Clear Height:	22'
Column Spacing:	40' x 40'
Building Depth:	200'
Truck Court:	111'
Available SF	16,918 SF
Office SF:	1,471 SF
Doors:	Two (2) Dock Doors
	One (1) Ramp



Committed to Driving Value for Our Customers

Properties with a Competitive Edge

Our scale, proprietary data and local relationships allow our 1,200+ skilled team members to help customers stay ahead of market trends.

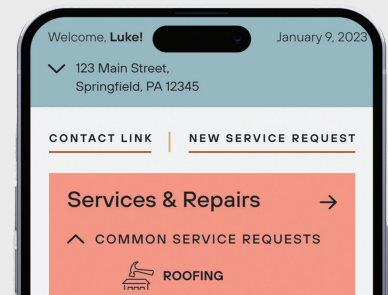


Best-in-Class Customer Service

Our on-the-ground regional teams provide you with local expertise, leveraging data-driven insights to find the right solutions for your business.

Link+

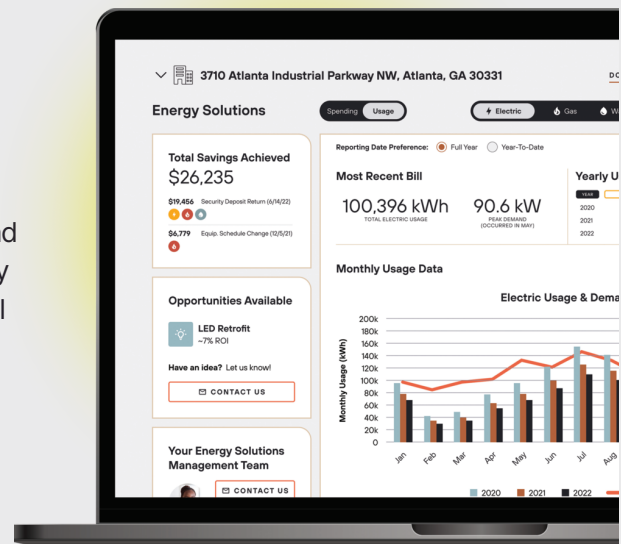
Our digital customer experience platform provides easy access to your property management teams, lease documents, billing and service requests. Sign up today!



500 Million
Square Foot
Portfolio

Energy Solutions

Link Logistics' award-winning utility management program helps customers save time and money while unlocking energy efficiency opportunities. Enroll today through Link+.



CONTACT INFORMATION

2901 TITAN ROW
ORLANDO, FL 32809

Tim Perry, CCIM, SIOR

tperry@lee-associates.com
(321) 278-0233

Ryan Griffith

rgriffith@lee-associates.com
(908) 208-4774

Derek Rigglesman, SIOR

drigglesman@lee-associates.com
(407) 456-3463

This document is for informational purposes only and does not constitute an offer or acceptance of a lease. Any lease agreement must be in writing and signed by the landlord. No representations or warranties are made except as expressly stated in a signed lease. Information is provided "as is" and may be subject to errors or change without notice.



LEASED BY

