

8211 GORGOZA PINES RD.  
QUARRY VILLAGE  
PARK CITY, UTAH 84098



AVAILABLE SPRING 2026

CLOVER FARMS  
QUARRY  
DEVELOPMENT -  
LOT 6

8211 GORGOZA PINES RD.  
PARK CITY, UTAH 84098

14 MAY 2025



233 SOUTH PLEASANT GROVE BLVD.  
SUITE #105  
PLEASANT GROVE, UTAH 84062  
PHONE: (801) 769-3000  
core@coreutah.com

NOTE: ALL INFORMATION HEREIN IS PRELIMINARY AND MAY BE CHANGED  
OR MODIFIED SUBJECT TO FINAL PERMITTING AND APPROVALS



LEVEL 1 AREA = 5,572 SF  
SUITE 101 = 1,281 SF  
SUITE 102 = 1,235 SF  
SUITE 103 = 1,024 SF  
SUITE 104 = 1,603 SF

LEVEL 2 AREA = 4,718 SF  
SUITE 203 = 1,599 SF  
SUITE 204 = 1,528 SF  
SUITE 205 = 1,282 SF  
SUITE 206 = 1,162 SF

TOTAL BUILDING AREA = 10,290 SF



CLOVER FARMS  
QUARRY  
DEVELOPMENT -  
LOT 6

8211 GORGOZA PINES RD.  
PARK CITY, UTAH 84098

14 MAY 2025



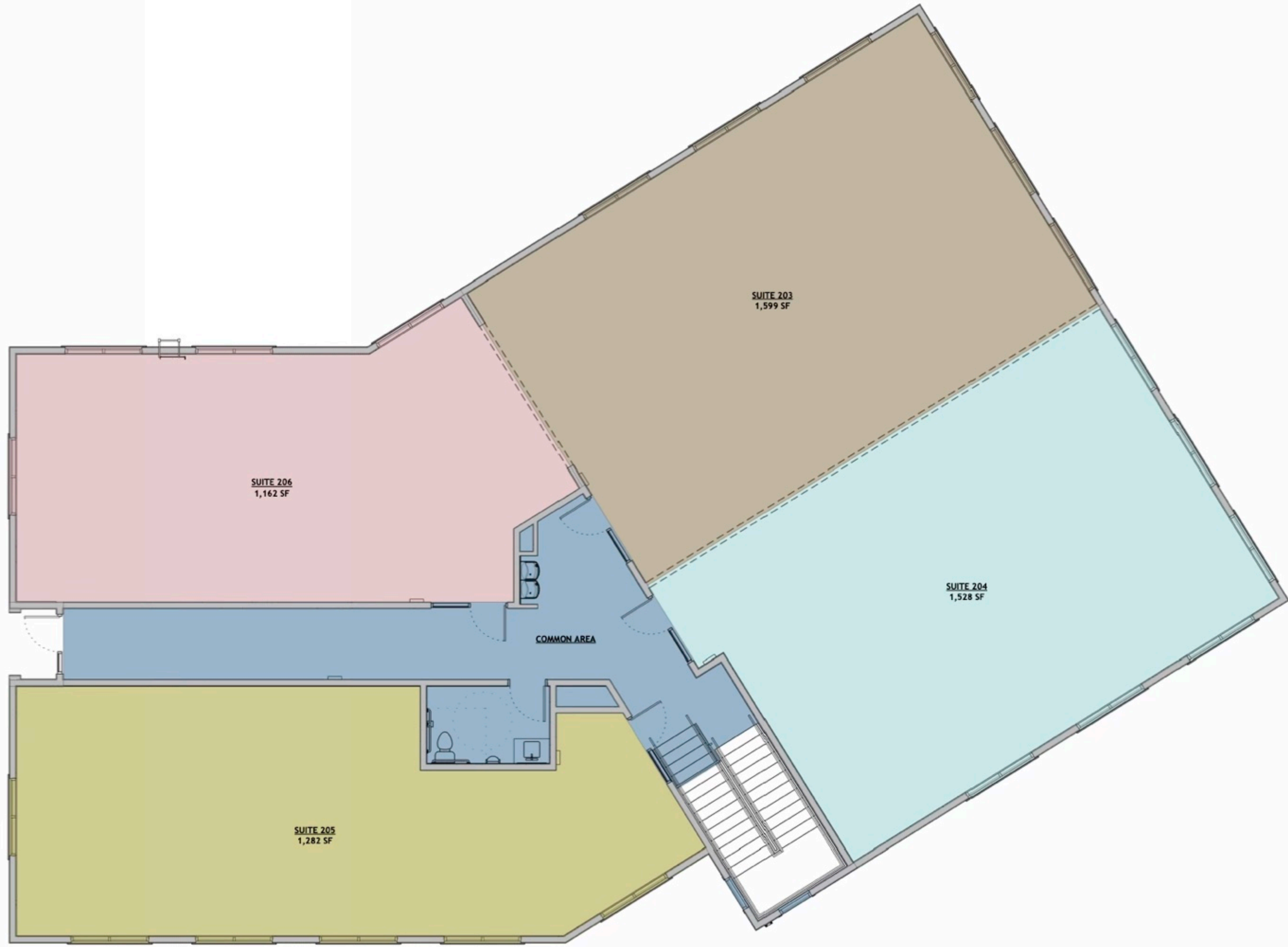
233 SOUTH PLEASANT GROVE BLVD.  
SUITE #105  
PLEASANT GROVE, UTAH 84062  
PHONE: (801) 769-3000  
core@coreutah.com



LEVEL 1 AREA = 5,572 SF  
SUITE 101 = 1,281 SF  
SUITE 102 = 1,235 SF  
SUITE 103 = 1,024 SF  
SUITE 104 = 1,603 SF

LEVEL 2 AREA = 4,718 SF  
SUITE 203 = 1,599 SF  
SUITE 204 = 1,528 SF  
SUITE 205 = 1,282 SF  
SUITE 206 = 1,162 SF

TOTAL BUILDING AREA = 10,290 SF



CLOVER FARMS  
QUARRY  
DEVELOPMENT -  
LOT 6

8211 GORGOZA PINES RD.  
PARK CITY, UTAH 84098

14 MAY 2025



233 SOUTH PLEASANT GROVE BLVD.  
SUITE #105  
PLEASANT GROVE, UTAH 84062  
PHONE: (801) 769-3000  
core@coreutah.com

NOTE: ALL INFORMATION HEREIN IS PRELIMINARY AND MAY BE CHANGED  
OR MODIFIED SUBJECT TO FINAL PERMITTING AND APPROVALS