

For Sale

7,839 SF | \$695,000
Industrial Space



3939 E. 14th Street

3939 E. 14th Street

Des Moines, Iowa 50313

Property Overview

Highly versatile industrial property strategically located at the intersection of E 14th Street (US-69) and Interstate 80. This offering provides an exceptional opportunity for businesses seeking a functional space with outstanding logistical advantages. The property's location ensures high visibility and convenient access, making it ideal for distribution, light manufacturing, or service-based operations. The addition has a 13'6" internal clear ht. The building is situated on a T-shaped, 0.6-acre lot that includes a small secure outdoor storage area.

Property Highlights

- Excellent Loading Capabilities: 2 docks, 1 Drive-in (10ft)
- Strategic Location: Positioned just 0.3 miles from the I80
- Secure Outdoor Storage
- Zoned MX3-V

Offering Summary

Sale Price:	\$695,000
Building Size:	7,839 SF
Lot Size:	0.638 Acres

For More Information

Chris Fultz

O: 319 331 3191
cfultz@iowarealtycommercial.com

Matt T. Connolly

O: 515 975 9600
mconnolly@iowarealtycommercial.com

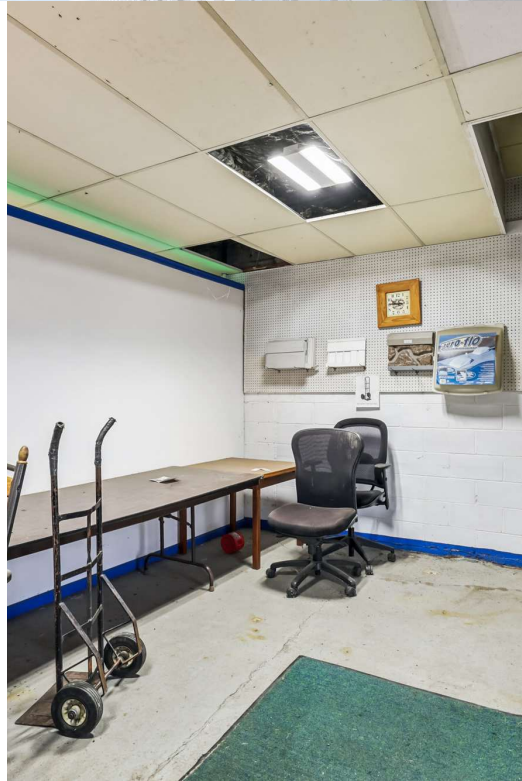
BROCHURE

3939 E. 14th Street, Des Moines, IA 50313

We obtained the information above from sources we believe to be reliable. However, we have not verified its accuracy and make no guarantee, warranty or representation about it. It is submitted subject to the possibility of errors, omissions, change of price, rental or other conditions, prior sale, lease or financing, or withdrawal without notice. We include projections, opinions, assumptions or estimates for example only, and they may not represent current or future performance of the property. You and your tax and legal advisors should conduct your own investigation of the property and transaction.

For Sale

7,839 SF | \$695,000
Industrial Space



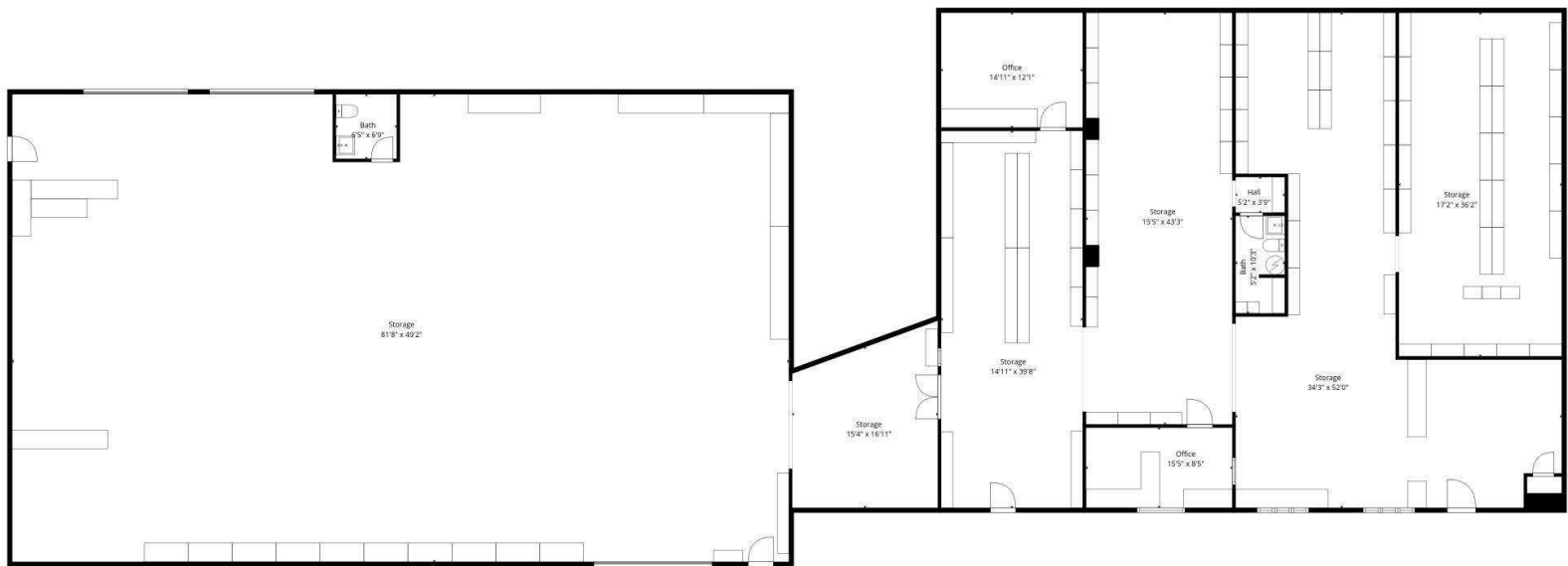
BROCHURE

3939 E. 14th Street, Des Moines, IA 50313

We obtained the information above from sources we believe to be reliable. However, we have not verified its accuracy and make no guarantee, warranty or representation about it. It is submitted subject to the possibility of errors, omissions, change of price, rental or other conditions, prior sale, lease or financing, or withdrawal without notice. We include projections, opinions, assumptions or estimates for example only, and they may not represent current or future performance of the property. You and your tax and legal advisors should conduct your own investigation of the property and transaction.

For Sale

7,839 SF | \$695,000
Industrial Space



TOTAL: 482 sq. ft

FLOOR 1: 482 sq. ft

EXCLUDED AREAS: STORAGE: 7194 sq. ft, WALLS: 248 sq. ft

Measurements Deemed Highly Reliable But Not Guaranteed.

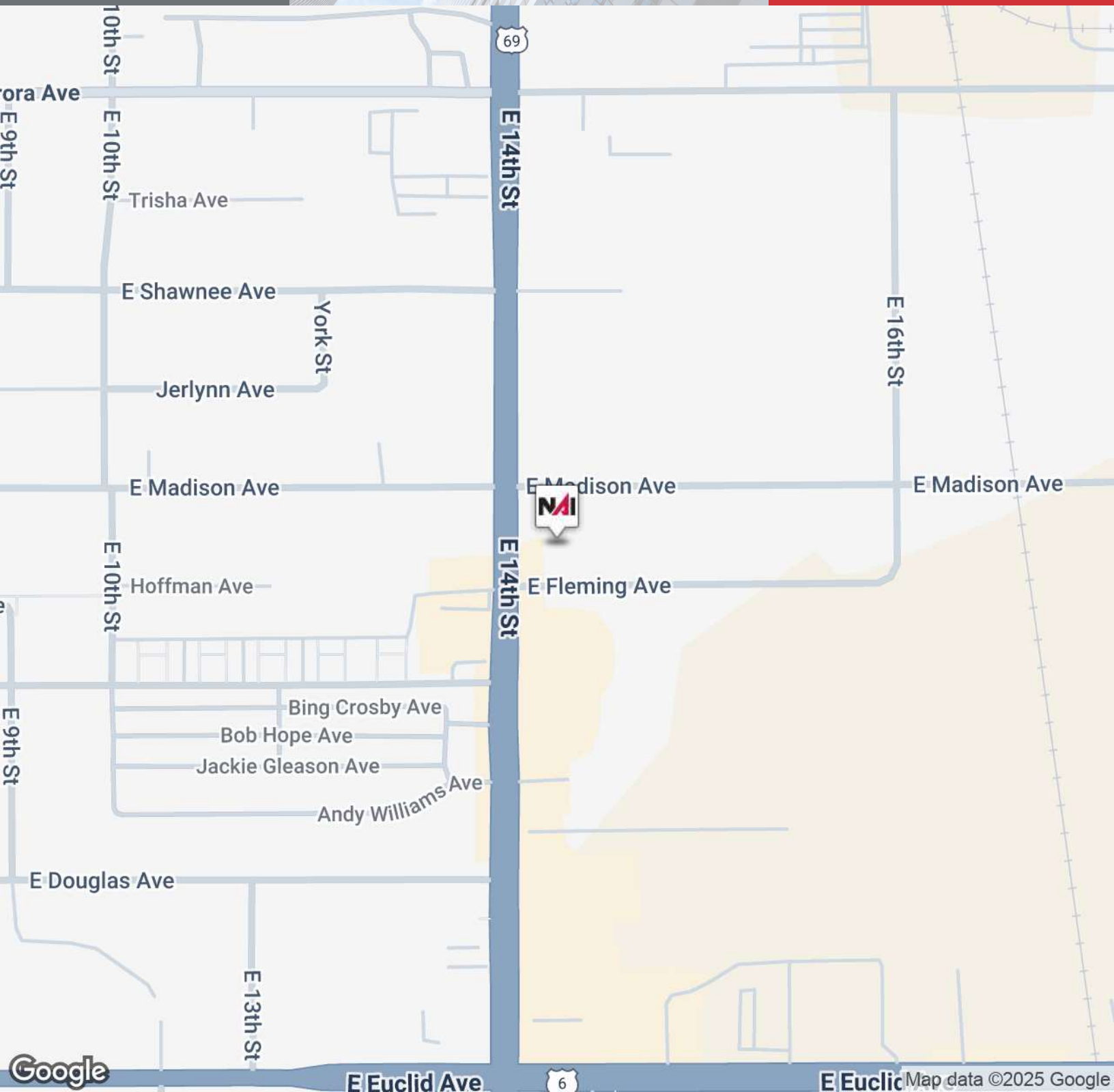
BROCHURE

3939 E. 14th Street, Des Moines, IA 50313

We obtained the information above from sources we believe to be reliable. However, we have not verified its accuracy and make no guarantee, warranty or representation about it. It is submitted subject to the possibility of errors, omissions, change of price, rental or other conditions, prior sale, lease or financing, or withdrawal without notice. We include projections, opinions, assumptions or estimates for example only, and they may not represent current or future performance of the property. You and your tax and legal advisors should conduct your own investigation of the property and transaction.

For Sale

7,839 SF | \$695,000
Industrial Space



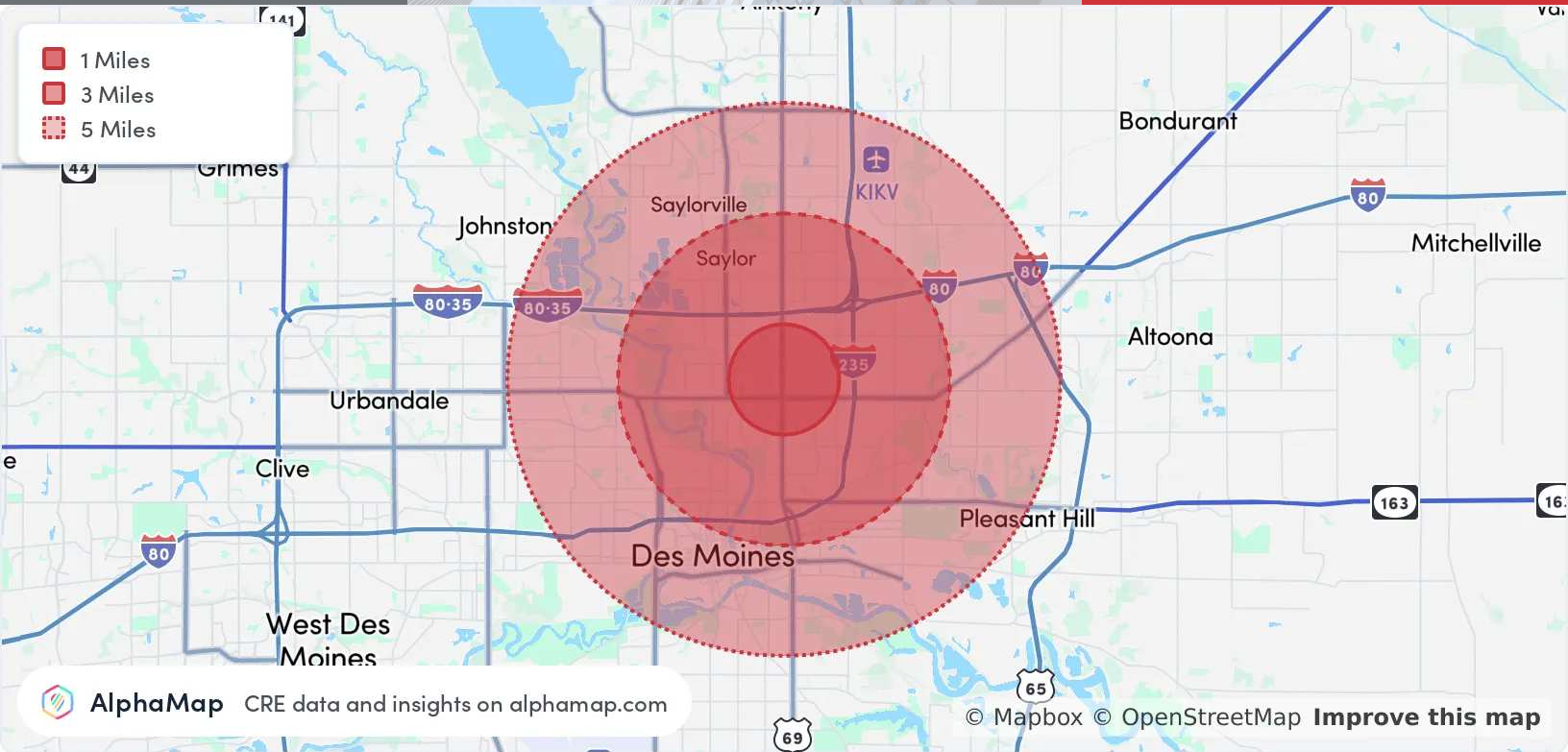
BROCHURE

3939 E. 14th Street, Des Moines, IA 50313

We obtained the information above from sources we believe to be reliable. However, we have not verified its accuracy and make no guarantee, warranty or representation about it. It is submitted subject to the possibility of errors, omissions, change of price, rental or other conditions, prior sale, lease or financing, or withdrawal without notice. We include projections, opinions, assumptions or estimates for example only, and they may not represent current or future performance of the property. You and your tax and legal advisors should conduct your own investigation of the property and transaction.

For Sale

7,839 SF | \$695,000
Industrial Space



Population

1 Mile

3 Miles

5 Miles

Total Population	9,236	64,488	168,623
Average Age	38	38	38
Average Age (Male)	37	37	37
Average Age (Female)	39	39	39

Household & Income

1 Mile

3 Miles

5 Miles

Total Households	3,379	24,662	69,636
Persons per HH	2.7	2.6	2.4
Average HH Income	\$62,308	\$65,735	\$78,243
Average House Value	\$152,594	\$181,243	\$222,123
Per Capita Income	\$23,077	\$25,282	\$32,601

Map and demographics data derived from AlphaMap

BROCHURE

3939 E. 14th Street, Des Moines, IA 50313

We obtained the information above from sources we believe to be reliable. However, we have not verified its accuracy and make no guarantee, warranty or representation about it. It is submitted subject to the possibility of errors, omissions, change of price, rental or other conditions, prior sale, lease or financing, or withdrawal without notice. We include projections, opinions, assumptions or estimates for example only, and they may not represent current or future performance of the property. You and your tax and legal advisors should conduct your own investigation of the property and transaction.