



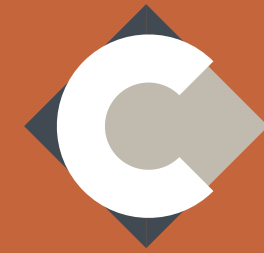
CRYSTAL PLAZA



 WESTCORD

FOR LEASE

30401-30501 AGOURA RD
AGOURA HILLS, CA 91301



CRYSTAL PLAZA

PROPERTY OVERVIEW

Crystal Plaza, located at **30401-30501 Agoura Rd**, stands as a premier **Class-A office destination** in the heart of Agoura Hills. This professionally managed project offers a sophisticated work environment featuring **modern architectural details**, an abundance of natural light, and **move-in ready spec suites** designed for immediate productivity. Tenants benefit from **abundant on-site parking**, a hands-on ownership team dedicated to property excellence, and a strategic location providing **seamless access to the 101 Freeway**. Surrounded by the scenic foothills of the Santa Monica Mountains and a thriving local business community, Crystal Plaza combines prestige with convenience, making it the standout choice for businesses seeking a high-quality office experience in the Conejo Valley.

 WESTCORD



PROPERTY FEATURES



Move-in Ready Spec Suites



3.5/1,000 Parking and EV Chargers



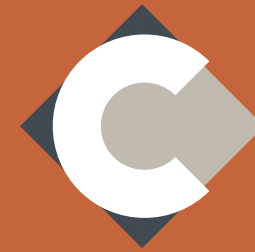
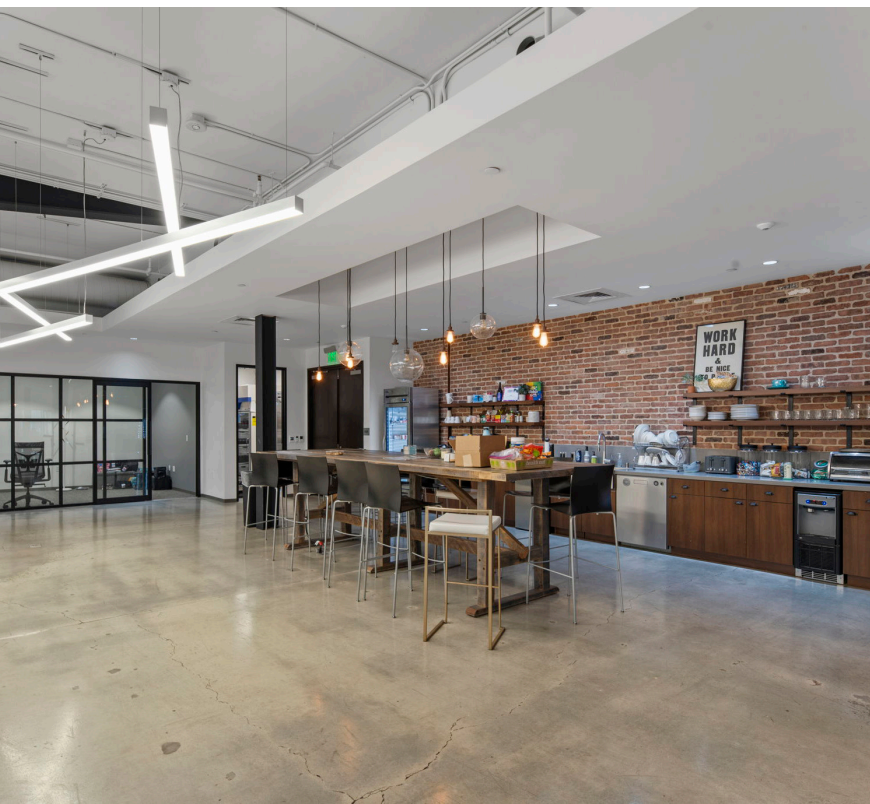
Outdoor seating and hangout areas



Grab & Go Snack Stations



Newly Renovated Common Areas



CRYSTAL PLAZA

AVAILABILITIES

Suite	Square Feet	Asking Rate
-------	-------------	-------------

30401 AGOURA RD

100	±5,931 RSF	\$2.45/FSG
-----	------------	------------

220 (Spec Suite)	±5,820 RSF	\$2.45/FSG
------------------	------------	------------

250	±6,329 RSF	\$2.25/FSG
-----	------------	------------

250/260	±13,481 RSF	\$2.25/FSG
---------	-------------	------------

260	±7,162 RSF	\$2.25/FSG
-----	------------	------------

270	±4,962 RSF	\$2.25/FSG
-----	------------	------------

30501 AGOURA RD

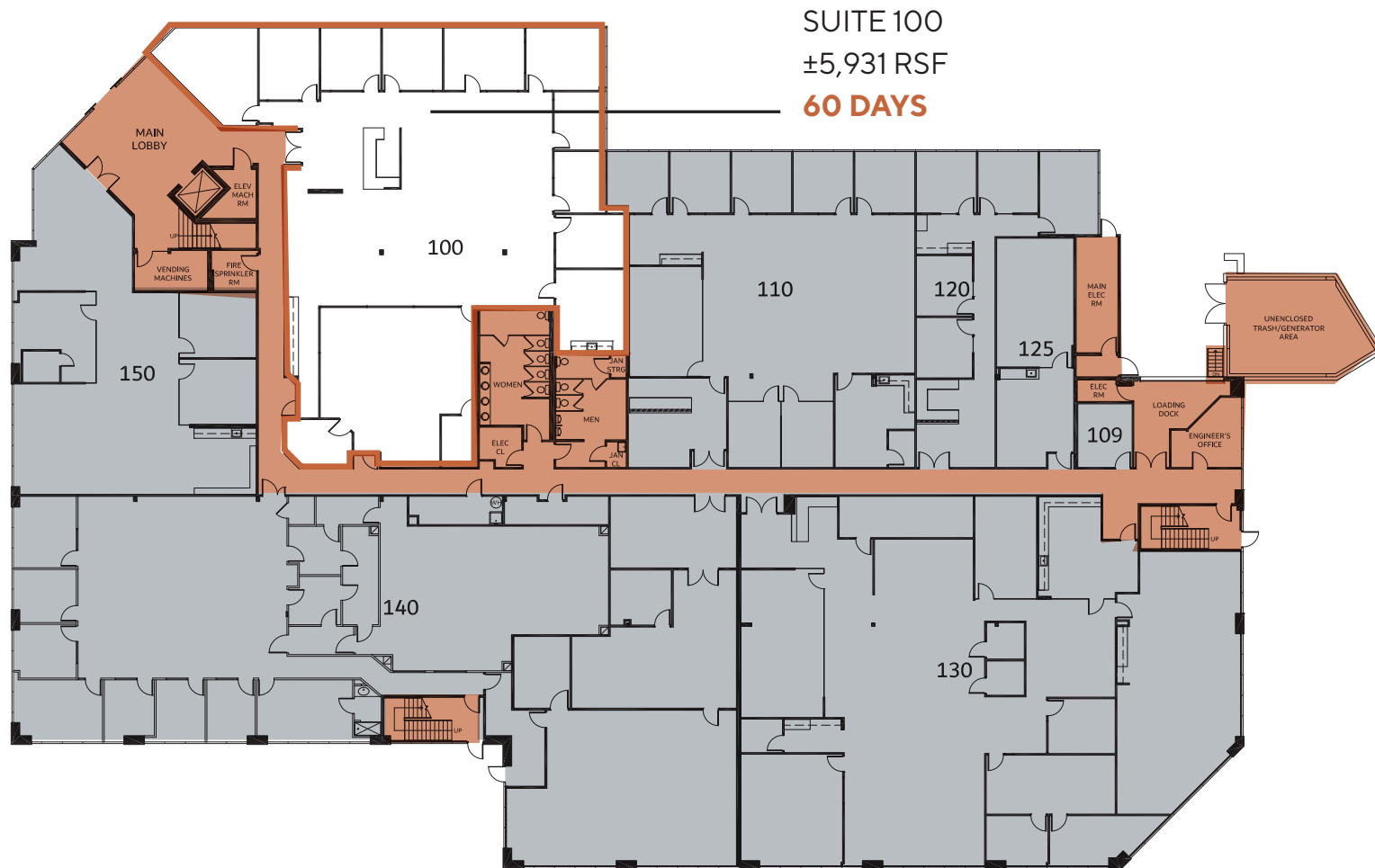
No Availability

30401 AGOURA RD AGOURA HILLS, CA 91301

1st Floor



CRYSTAL PLAZA



30401 AGOURA RD AGOURA HILLS, CA 91301

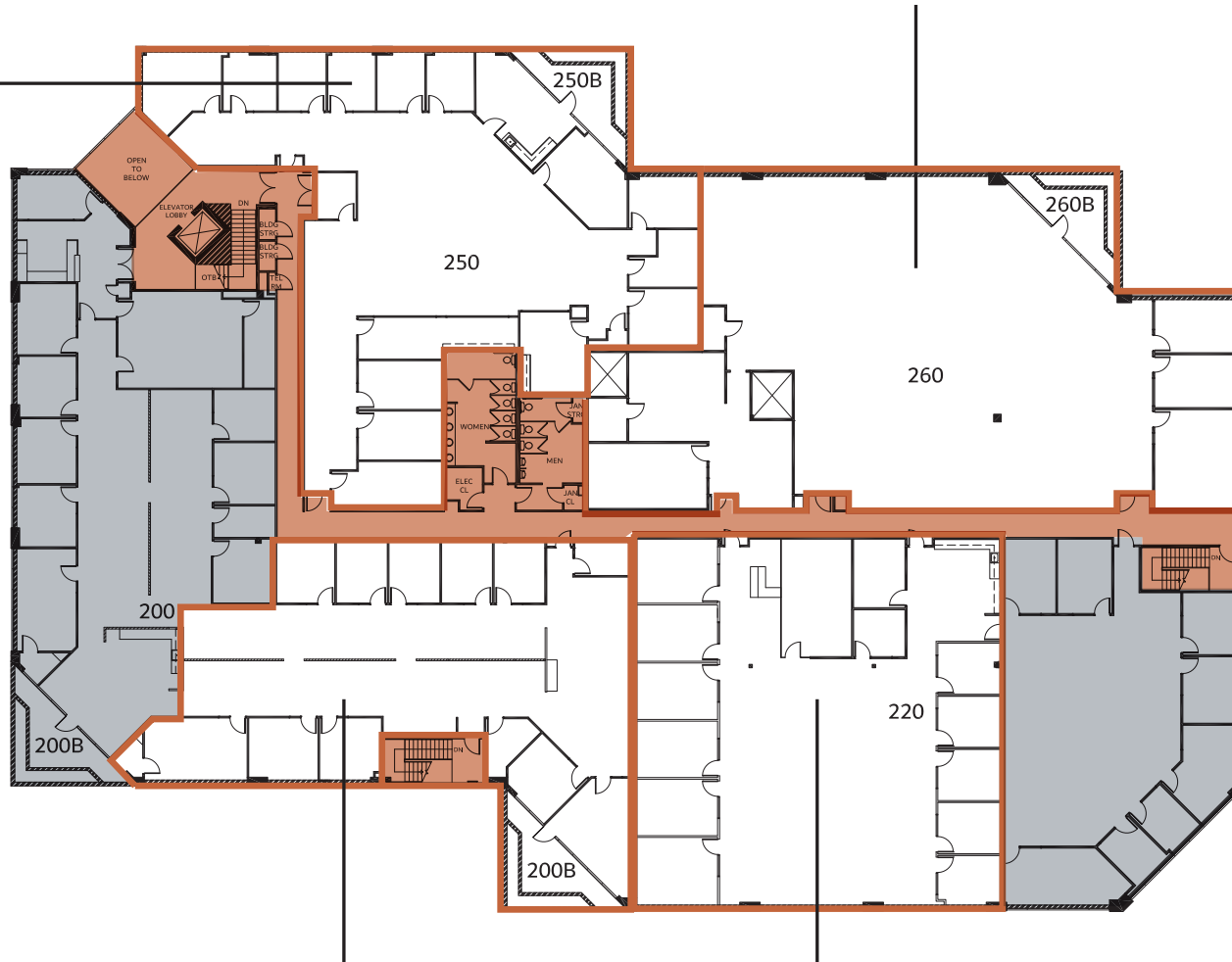
2nd Floor



CRYSTAL PLAZA

SUITE 250
±6,329 RSF
VACANT

SUITE 260
±7,152 RSF
VACANT



SUITE 270
±4,962 RSF
VACANT

SUITE 220
±5,820 RSF
SPEC SUITE
VACANT

WESTCORD



AERIAL PLAN



101 Freeway

Agoura Rd

MARKET OVERVIEW

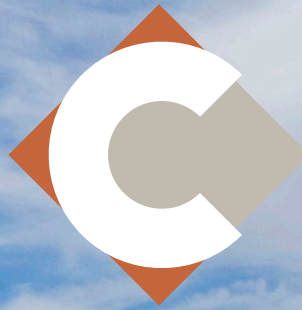


Agoura Hills

Nestled in the scenic foothills of the Santa Monica Mountains, Agoura Hills offers a perfect blend of natural beauty and modern convenience. With direct access to the 101 Freeway, it's an ideal location for businesses seeking connectivity to both Los Angeles and Ventura County. The area boasts a thriving local economy, top-rated schools, and a vibrant, professional community. Surrounded by parks, hiking trails, and upscale dining options, Agoura Hills provides a lifestyle that attracts top talent. Leasing office space here means positioning your business in a prestigious, sought-after location with exceptional quality of life.

Surrounding Conejo Valley Businesses





CRYSTAL PLAZA

Jeremy Principe

Vice President

DRE #02131156

M (805) 390-5267

T (805) 497-4557

Jeremy@westcord.com

Brendan Pagani

Vice President

DRE #02095300

M (949) 887-9814

T (805) 497-4557

Brendan@westcord.com



WESTCORD.COM

This information has been furnished from sources which we deem reliable, but for which we assume no liability. The information contained herein is given, in confidence, with the understanding that all negotiations pertaining to this property be handled through the submitting office. All measurements are approximate.

