

**1600 Stewart Avenue, Westbury****FOR SUBLEASE**

**Available:** 6,790 rentable sq. ft.  
**Term:** Through January 31, 2029  
**Price Per Sq. Ft.:** Upon Request  
**Occupancy:** Arranged

**Comments**

- Creditworthy Sublandlord
- 'Like-new', above standard installation with furniture available
- In-suite Pantry/Lunchroom
- Panoramic views of Eisenhower Park

**Building Amenities:**

- Immediate access to Meadowbrook Parkway and convenient to other major thoroughfares.
- Food Service and Shared Conference Facility
- Full-building Back-up Generator

**For further information or to arrange an inspection, please call:**

Gerard Krush  
Managing Director  
516-942-8319  
[gkrush@resltd.com](mailto:gkrush@resltd.com)



Robert Rosenbluth  
Exec. Managing Director  
516-942-8302  
[rrosenbluth@resltd.com](mailto:rrosenbluth@resltd.com)

500 North Broadway • Suite 165 • Jericho • New York 11753 • 516.942.8300 • 516.942.8311 • [www.resltd.com](http://www.resltd.com)

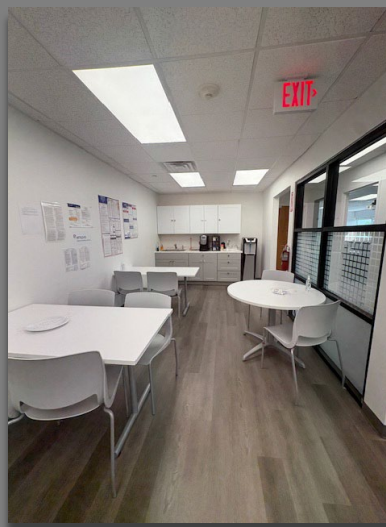
All information furnished regarding either property for sale, rental or the financing is from sources deemed reliable. No representation is made as to the accuracy thereof and submitted subject to errors, change of price, rental rates or other conditions, prior sale, lease or financing, or withdrawal without notice. All areas and dimensions are approximate.



Reception/Waiting



Boardroom

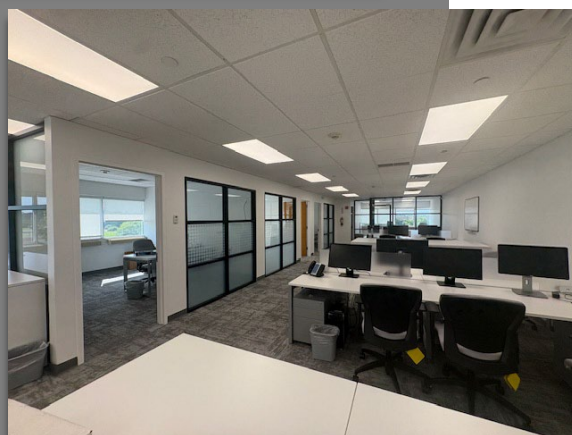
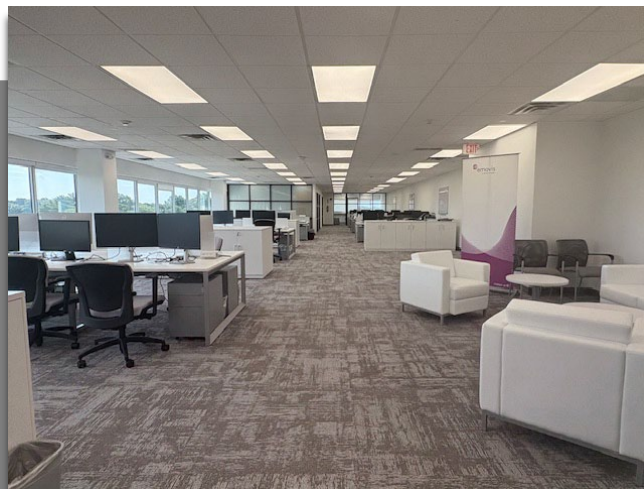


Lunchroom/Pantry

500 North Broadway ▪ Suite 165 ▪ Jericho ▪ New York 11753 ▪ 516.942.8300 ▪ 516.942.8311 ▪ [www.resltd.com](http://www.resltd.com)

All information furnished regarding either property for sale, rental or the financing is from sources deemed reliable. No representation is made as to the accuracy thereof and submitted subject to errors, change of price, rental rates or other conditions, prior sale, lease or financing, or withdrawal without notice. All areas and dimensions are approximate.

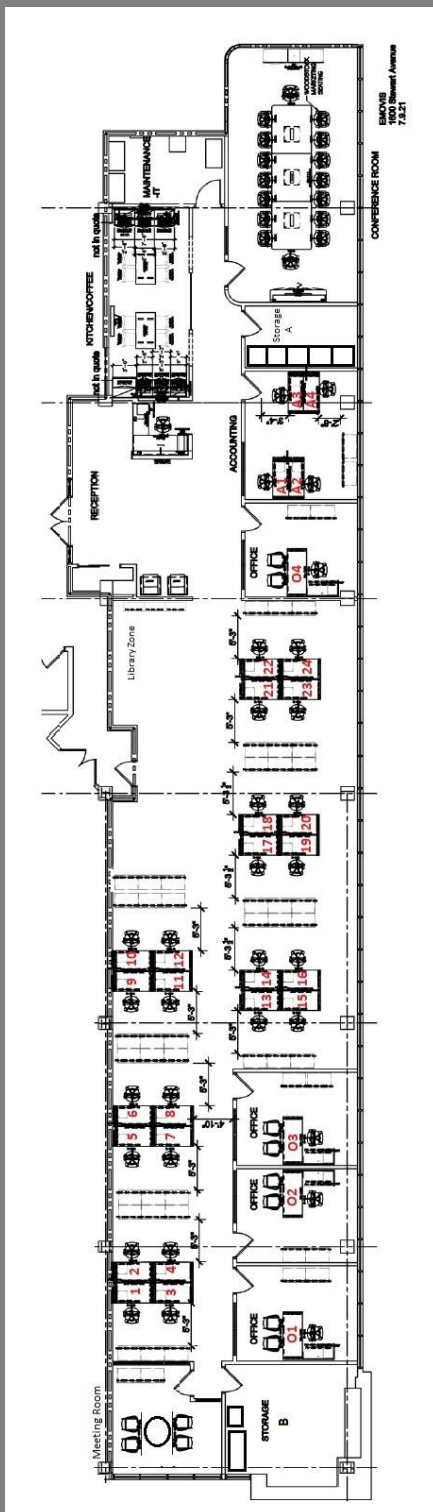




## General Office Areas

500 North Broadway ▪ Suite 165 ▪ Jericho ▪ New York 11753 ▪ 516.942.8300 ▪ 516.942.8311 ▪ [www.resltd.com](http://www.resltd.com)

All information furnished regarding either property for sale, rental or the financing is from sources deemed reliable. No representation is made as to the accuracy thereof and submitted subject to errors, change of price, rental rates or other conditions, prior sale, lease or financing, or withdrawal without notice. All areas and dimensions are approximate.



Floor Plan

500 North Broadway ▪ Suite 165 ▪ Jericho ▪ New York 11753 ▪ 516.942.8300 ▪ 516.942.8311 ▪ [www.resltd.com](http://www.resltd.com)

All information furnished regarding either property for sale, rental or the financing is from sources deemed reliable. No representation is made as to the accuracy thereof and submitted subject to errors, change of price, rental rates or other conditions, prior sale, lease or financing, or withdrawal without notice. All areas and dimensions are approximate.