

FOR LEASE BELTWAY 8 BUSINESS PARK

5829 W SAM HOUSTON PARKWAY N | HOUSTON, TX 77032

BUILDING 10

BUILDING 4

BUILDING 5

BUILDING 6

BUILDING 7

BUILDING 8

BUILDING 9

BUILDING 10

BUILDING 11

BUILDING 12

W SAM HOUSTON PKWY N

W SAM HOUSTON PKWY N



± 4,800 SF
± 2,400 SF
± 4,800 SF
± 2,400 SF
± 3,240 SF
AVAILABLE



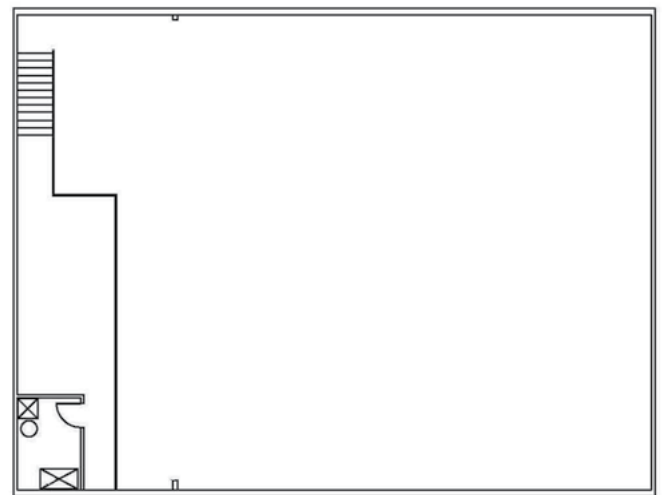
CUSHMAN &
WAKEFIELD



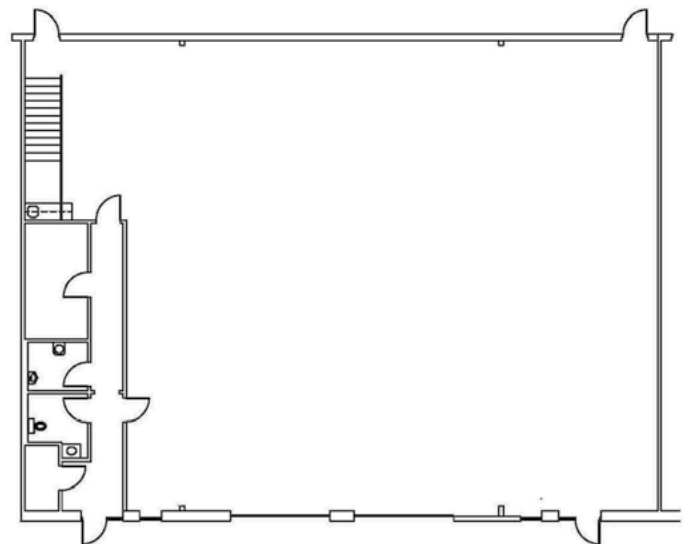
SPACE HIGHLIGHTS

SUITE 1003

Total Available:	±4,800 SF
Office:	±450 SF
Mezzanine:	±450 SF
Warehouse Area:	±4,350 SF
Clear Height:	±18'
Power:	3-phase / 480 Volt / 200 Amp
Loading:	Grade-Level Loading
Access:	Direct Access from Beltway 8



SUITE 1003 LEVEL 2



JOHN KRUSE

Managing Director
Direct: +1 281 688 9234
Mobile: +1 713 304 4919
john.kruse@cushwake.com

CARTER HOLMES

Director
Direct: +1 281 688 9234
Mobile: +1 713 304 4919
john.kruse@cushwake.com

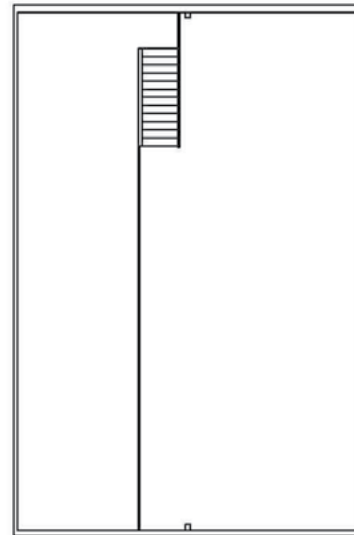




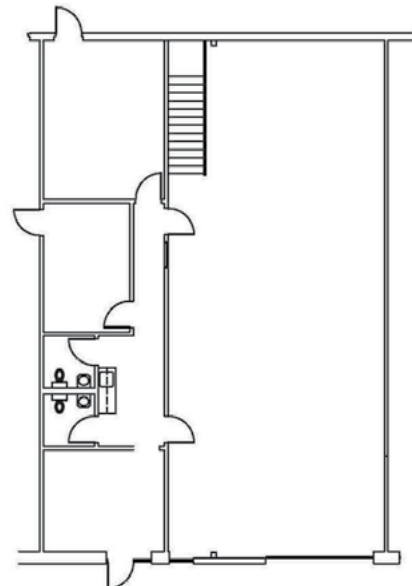
SPACE HIGHLIGHTS

SUITE 1005

Total Available:	±2,400 SF
Office:	±840 SF
Mezzanine:	±840 SF
Warehouse Area:	±1,560 SF
Clear Height:	±18'
Power:	3-phase / 480 Volt / 200 Amp
Loading:	Grade-Level Loading
Access:	Direct Access from Beltway 8



SUITE 1005 LEVEL 2



JOHN KRUSE

Managing Director
Direct: +1 281 688 9234
Mobile: +1 713 304 4919
john.kruse@cushwake.com

CARTER HOLMES

Director
Direct: +1 281 688 9234
Mobile: +1 713 304 4919
john.kruse@cushwake.com



**CUSHMAN &
WAKEFIELD**



SPACE HIGHLIGHTS

SUITE 1007

Total Available: ±4,800 SF

Office: ±575 SF

Mezzanine: ±575 SF

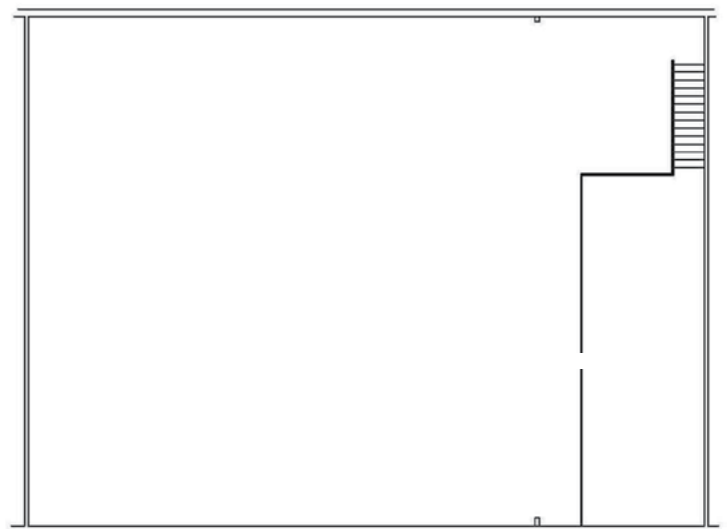
Warehouse Area: ±4,225 SF

Clear Height: ±18'

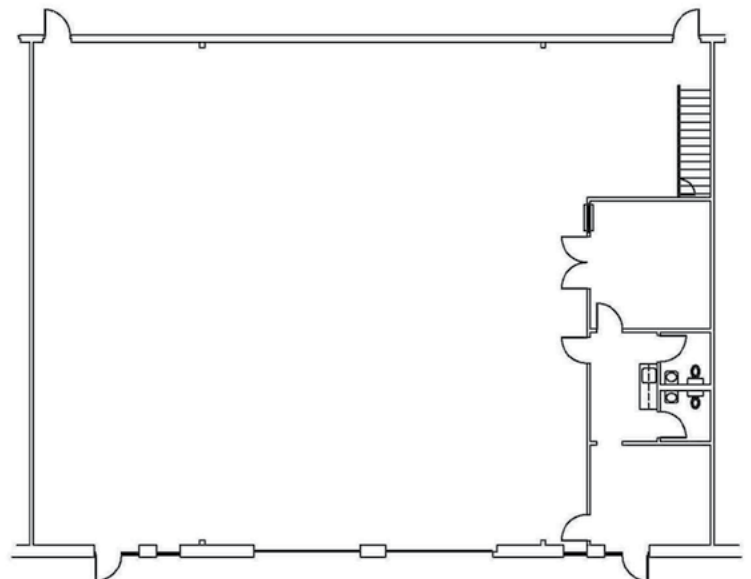
Power: 3-phase / 480 Volt /
200 Amp

Loading: Grade-Level Loading

Access: Direct Access from
Beltway 8



SUITE 1007 LEVEL 2



JOHN KRUSE

Managing Director
Direct: +1 281 688 9234
Mobile: +1 713 304 4919
john.kruse@cushwake.com

CARTER HOLMES

Director
Direct: +1 281 688 9234
Mobile: +1 713 304 4919
john.kruse@cushwake.com



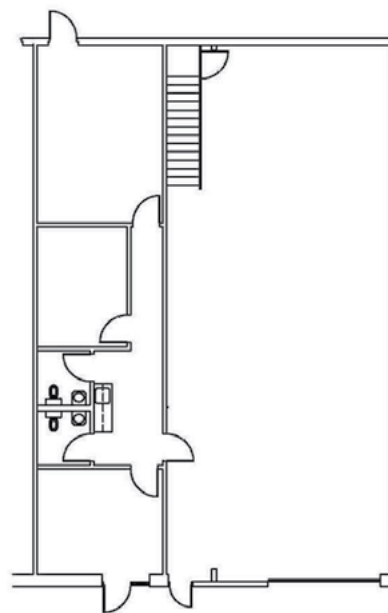
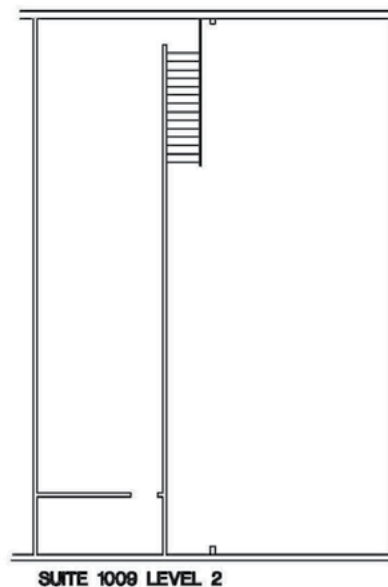
**CUSHMAN &
WAKEFIELD**



SPACE HIGHLIGHTS

SUITE 1009

Total Available:	±2,400 SF
Office:	±840 SF
Mezzanine:	±840 SF
Warehouse Area:	±1,560 SF
Clear Height:	±18'
Power:	3-phase / 480 Volt / 200 Amp
Loading:	Grade-Level Loading
Access:	Direct Access from Beltway 8



JOHN KRUSE

Managing Director
Direct: +1 281 688 9234
Mobile: +1 713 304 4919
john.kruse@cushwake.com

CARTER HOLMES

Director
Direct: +1 281 688 9234
Mobile: +1 713 304 4919
john.kruse@cushwake.com



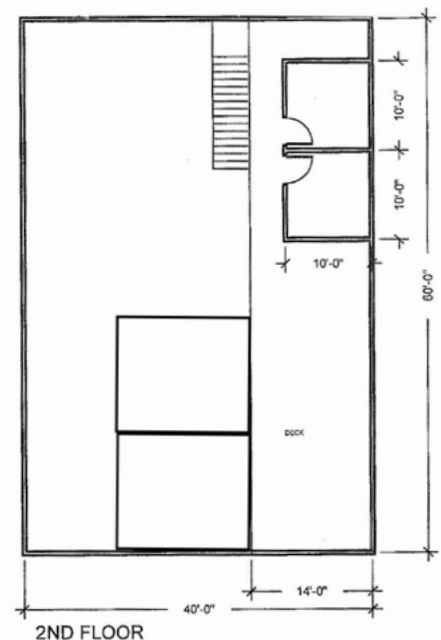
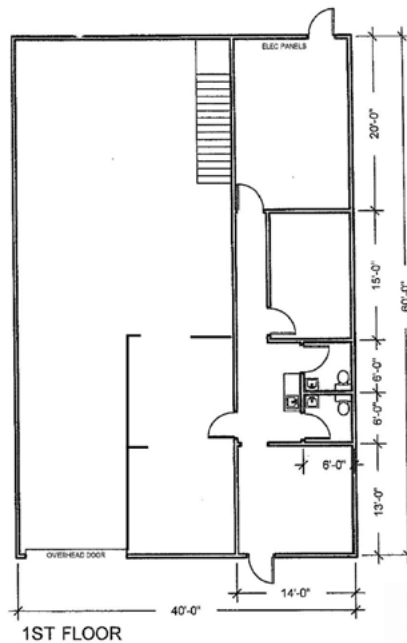
**CUSHMAN &
WAKEFIELD**



SPACE HIGHLIGHTS

SUITE 1010

Total Available:	±3,240 SF
1 st Floor Office:	±840 SF
2 nd Floor Office:	±200 SF
2 nd Floor Mezzanine:	±640 SF
Warehouse Area:	±1,560 SF
Clear Height:	±18'
Power:	3-phase / 480 Volt / 200 Amp
Loading:	Grade-Level Loading
Access:	Direct Access from Beltway 8



JOHN KRUSE

Managing Director
Direct: +1 281 688 9234
Mobile: +1 713 304 4919
john.kruse@cushwake.com

CARTER HOLMES

Director
Direct: +1 281 688 9234
Mobile: +1 713 304 4919
john.kruse@cushwake.com



**CUSHMAN &
WAKEFIELD**

FOR LEASE

BELTWAY 8

BUSINESS

PARK

**5829 W SAM HOUSTON PARKWAY N
HOUSTON, TX 77032**

For more information,
please contact:

JOHN KRUSE

Managing Director
Direct: +1 281 688 9234
Mobile: +1 713 304 4919
john.kruse@cushwake.com

CARTER HOLMES

Director
Direct: +1 281 688 9234
Mobile: +1 713 304 4919
john.kruse@cushwake.com



1330 Post Oak Blvd., Suite 2700
Houston, TX 77056

cushmanwakefield.com

©2025 Cushman & Wakefield. All rights reserved. The information contained in this communication is strictly confidential. This information has been obtained from sources believed to be reliable but has not been verified. NO WARRANTY OR REPRESENTATION, EXPRESS OR IMPLIED, IS MADE AS TO THE CONDITION OF THE PROPERTY (OR PROPERTIES) REFERENCED HEREIN OR AS TO THE ACCURACY OR COMPLETENESS OF THE INFORMATION CONTAINED HEREIN, AND SAME IS SUBMITTED SUBJECT TO ERRORS, OMISSIONS, CHANGE OF PRICE, RENTAL OR OTHER CONDITIONS, WITHDRAWAL WITHOUT NOTICE, AND TO ANY SPECIAL LISTING CONDITIONS IMPOSED BY THE PROPERTY OWNER(S). ANY PROJECTIONS, OPINIONS OR ESTIMATES ARE SUBJECT TO UNCERTAINTY AND DO NOT SIGNIFY CURRENT OR FUTURE PROPERTY PERFORMANCE.

