



Commercial and Industrial Real Estate
Sales and Leasing
Property Management

Joey Betbeze
3345 Halls Mill Road
Mobile, Alabama 36606

Office: 251.476.4111
Cell: 251.554.8145

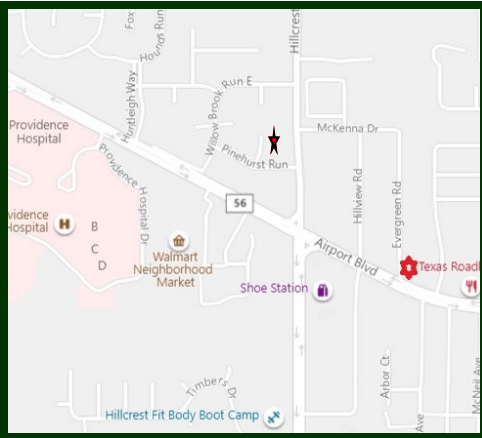
JoeyBetbeze@BetbezeRealty.com
www.BetbezeRealty.com

FOR SALE 1.7 ACRE COMMERCIAL SITE AIRPORT BLVD. MOBILE ALABAMA

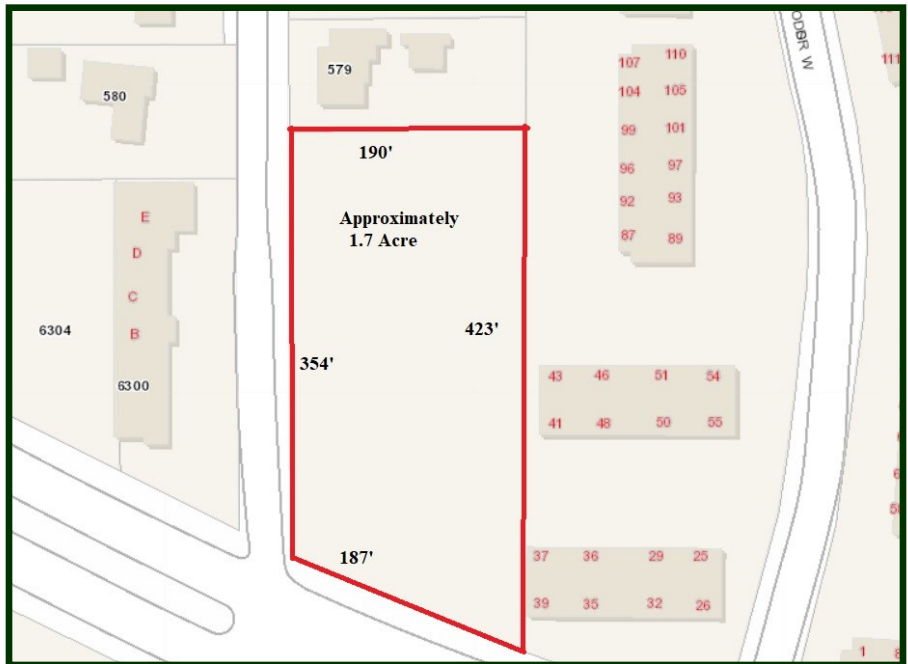
LOTS 2 & 3 L.O. DAVIS SUBDIVISION



One of the last remaining vacant parcels on Airport Blvd. The property is level with trees. Currently zoned R-1 (residential), it is projected to be Mixed Commercial Corridor when the new zoning ordinance is adopted.



- 1.7 Acres.
- 187' x 423'
190' x 354'
- 187 Front Feet on Airport Blvd.
- Currently zoned R-1
(Residential)
- **\$1,190,000.00 (\$16.07/s.f.)**



The Property is located on the north side of Airport Blvd. at the northeast corner of Airport Blvd. and Evergreen Road. The site is approximately 3/10 of a mile east of the intersection of Airport Blvd. and Hillcrest Road.

The information above has been obtained from sources believed reliable. While we do not doubt its accuracy we have not verified it and make no guarantee, warranty or representation about it. It is your responsibility to independently confirm its accuracy and completeness. Any projections, opinions, assumptions, or estimates used are for example only and do not represent the current or future performance of the property. The value of this transaction to you depends on tax and other factors which should be evaluated by your tax, financial, and legal advisors. You and your advisors should conduct a careful, independent investigation of the property to determine to your satisfaction the suitability of the property for your needs.



SPRINGHILL ESTATES, UNIT NO. 1
RESUBDIVISION OF LOTS 3 & 6
MAP BOOK 24, PAGE 80

10' ADDITIONAL R/W HEREBY DEDICATED
TO THE CITY OF MOBILE
N 00°-10'-15" W 200.0'

244.43'

RT B

HIGHLAND APARTMENTS
MAP BOOK 26, PAGE 34
ALSO KNOWN AS

