



FOR SALE

OWNER/USER OPPORTUNITY RESTAURANT/RETAIL

NWC 12th St & Northern Ave | Phoenix, AZ

DARRELL DESHAW
602.295.1128
ddeshaw@w-retail.com

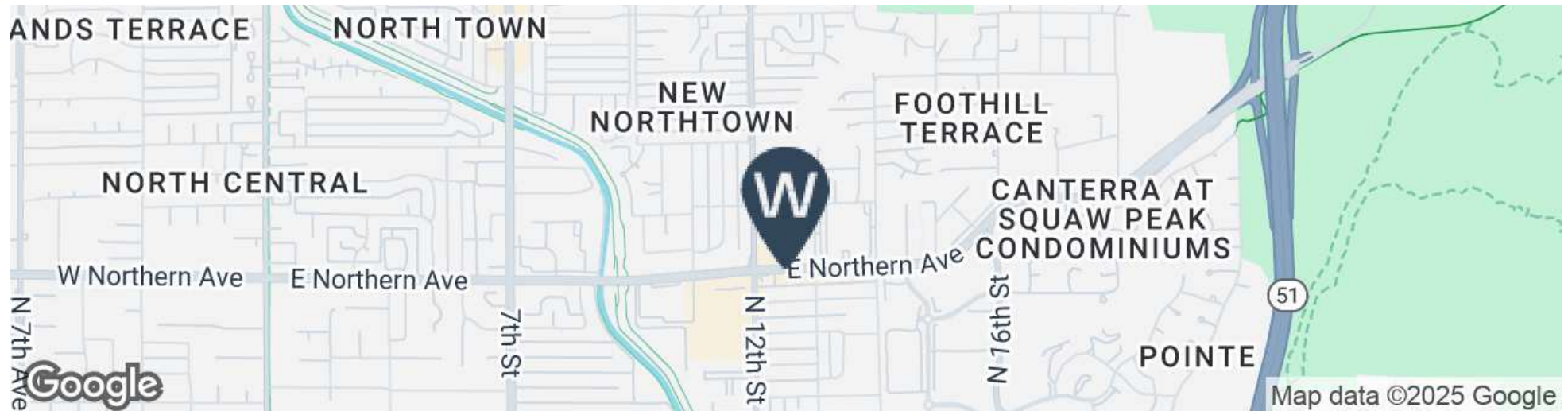


WESTERN RETAIL ADVISORS | 2555 E Camelback Rd, Suite 200
Phoenix AZ, 85016 | 602.778.3747 | w-retail.com

FOR SALE

VACANT OWNER/USER RESTAURANT

1212 East Northern Avenue Phoenix, AZ 85020



LOCATION DESCRIPTION

1212 E NORTHERN AVE., PHOENIX AZ 85020

PROPERTY HIGHLIGHTS

- Former restaurant space +/-3,446 SF
- Billboard income included
- 1.2 Miles from the 51 freeway
- Dynamic trade area with over 74,000 cars thru the intersection.
- Dense population
- Average H income over \$127,000 within 3 miles

AREA CO-TENANTS



The information contained within this brochure has been obtained from sources other than Western Retail Advisors, LLC. Western Retail Advisors have not verified such information and make no guarantee, warranty, or representation about such information. It is your responsibility to independently confirm its accuracy and completeness. Any dimensions, specifications, floor plans, and information may not be accurate and should be verified by you prior to the lease or purchase of the property.

FOR SALE

VACANT OWNER/USER RESTAURANT

1212 East Northern Avenue Phoenix, AZ 85020

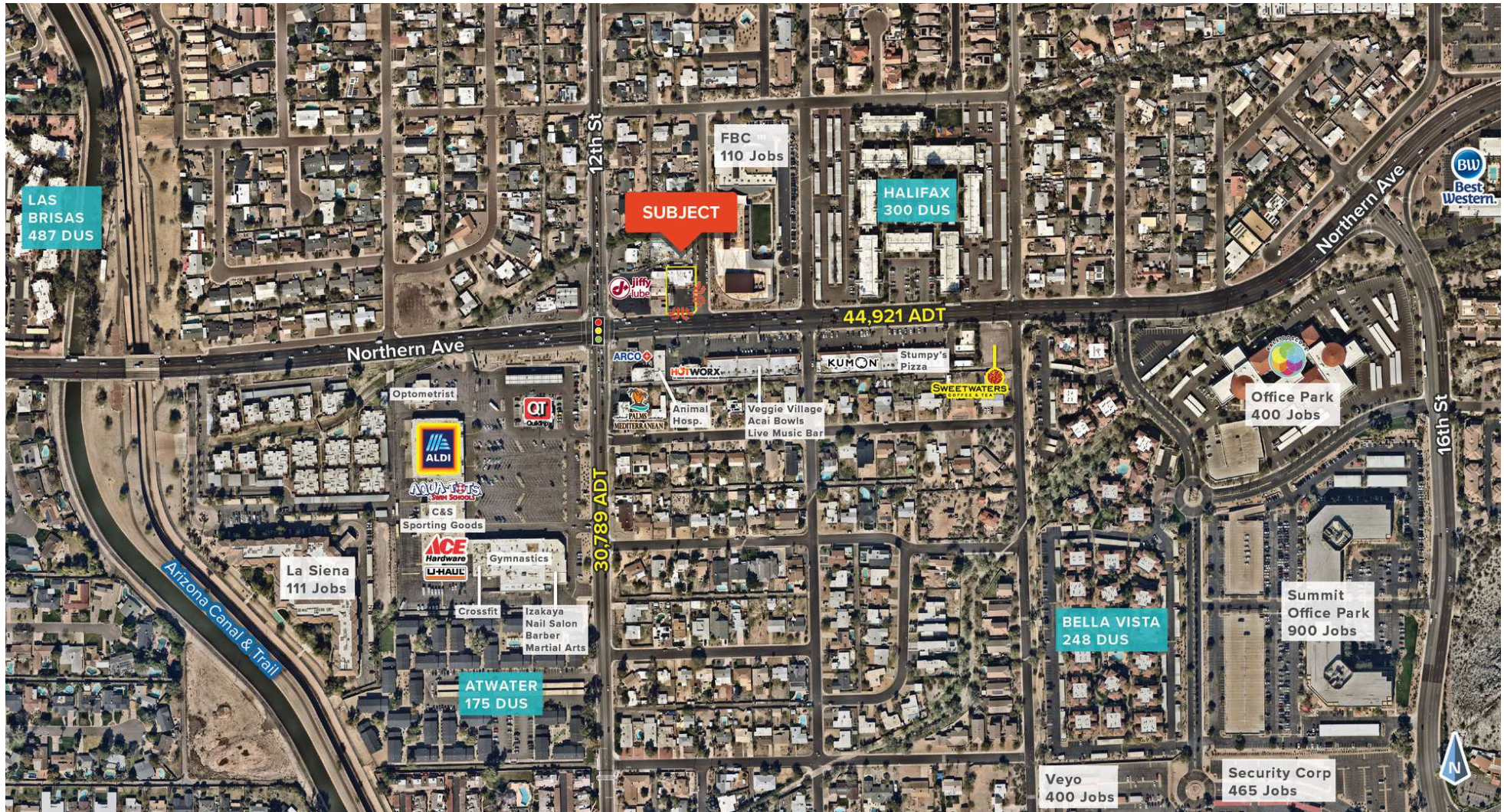


The information contained within this brochure has been obtained from sources other than Western Retail Advisors, LLC. Western Retail Advisors have not verified such information and make no guarantee, warranty, or representation about such information. It is your responsibility to independently confirm its accuracy and completeness. Any dimensions, specifications, floor plans, and information may not be accurate and should be verified by you prior to the lease or purchase of the property.

FOR SALE

VACANT OWNER/USER RESTAURANT

1212 East Northern Avenue Phoenix, AZ 85020



The information contained within this brochure has been obtained from sources other than Western Retail Advisors, LLC. Western Retail Advisors have not verified such information and make no guarantee, warranty, or representation about such information. It is your responsibility to independently confirm its accuracy and completeness. Any dimensions, specifications, floor plans, and information may not be accurate and should be verified by you prior to the lease or purchase of the property.

FOR SALE

VACANT OWNER/USER RESTAURANT

1212 East Northern Avenue Phoenix, AZ 85020



The information contained within this brochure has been obtained from sources other than Western Retail Advisors, LLC. Western Retail Advisors have not verified such information and make no guarantee, warranty, or representation about such information. It is your responsibility to independently confirm its accuracy and completeness. Any dimensions, specifications, floor plans, and information may not be accurate and should be verified by you prior to the lease or purchase of the property.

VACANT OWNER/USER RESTAURANT

1212 East Northern Avenue Phoenix, AZ 85020

Sale Price

CALL FOR PRICE

LOCATION INFORMATION

Building Name	Vacant Owner/User Restaurant
Street Address	1212 East Northern Avenue
City, State, Zip	Phoenix, AZ 85020
County	Maricopa

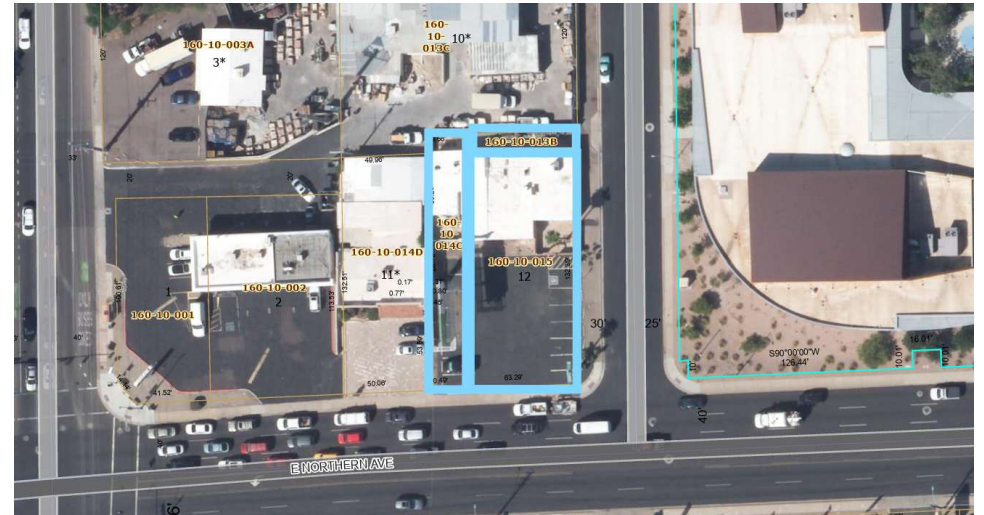
BUILDING INFORMATION

Building Size	3,446 SF
Tenancy	Single



PROPERTY INFORMATION

Property Type	Retail
Property Subtype	Street Retail
Zoning	C-2
Lot Size	11,832 SF
APNs #	160-10-013B; 160-10-014B; 160-10-015









The information contained within this brochure has been obtained from sources other than Western Retail Advisors, LLC. Western Retail Advisors have not verified such information and make no guarantee, warranty, or representation about such information. It is your responsibility to independently confirm its accuracy and completeness. Any dimensions, specifications, floor plans, and information may not be accurate and should be verified by you prior to the lease or purchase of the property.

FOR SALE

VACANT OWNER/USER RESTAURANT

1212 East Northern Avenue Phoenix, AZ 85020

<div></div> <div>POPULATION</div>				<div></div> <div>HOUSEHOLD INCOME</div>				<div></div> <div>DAYTIME WORKFORCE</div>			
	1 MILE	3 MILES	5 MILES		1 MILE	3 MILES	5 MILES		1 MILE	3 MILES	5 MILES
Area Total	14,871	111,813	357,782	Median	\$100,235	\$82,625	\$75,970	Total Businesses	795	4,099	15,256
Median Age	44.6	41.1	38.0	Average	\$135,208	\$130,973	\$119,100	Employees	9,925	48,426	183,832
								Daytime Population	18,575	116,117	395,829

<div></div> <div>EDUCATION</div>				<div></div> <div>EMPLOYMENT</div>				<div></div> <div>HOUSEHOLD STATISTICS</div>			
	1 MILE	3 MILES	5 MILES		1 MILE	3 MILES	5 MILES		1 MILE	3 MILES	5 MILES
Percentage with Degrees	63.0%	56.0%	48.0%	White Collar	76.14%	70.95%	64.60%	Households	7,291	50,977	154,160
				Services	11.28%	12.90%	18.33%	Median Home Value	\$597,294	\$593,853	\$521,414
				Blue Collar	12.61%	16.15%	17.08%				

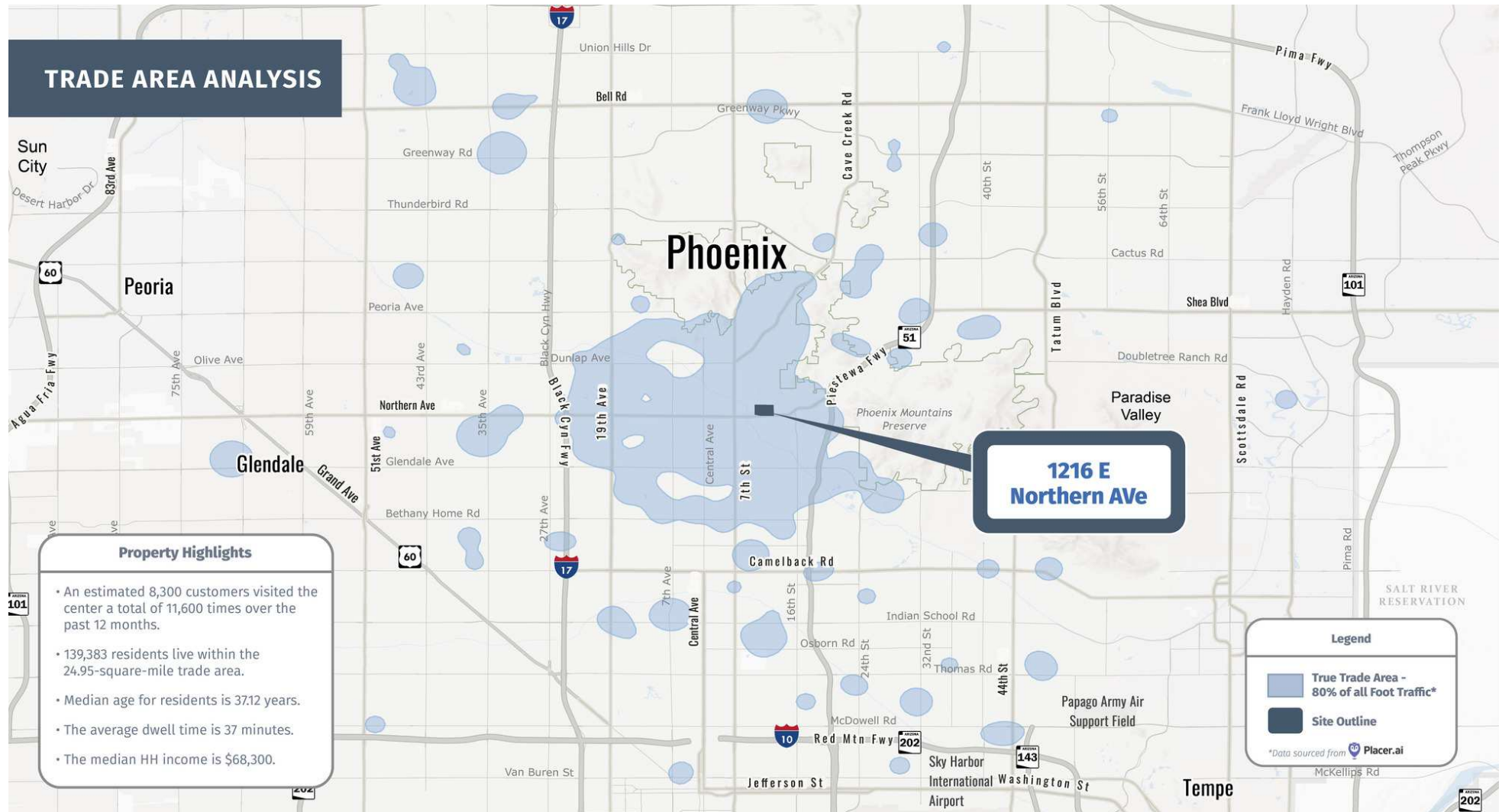
*2025 Demographic data derived from ESRI

The information contained within this brochure has been obtained from sources other than Western Retail Advisors, LLC. Western Retail Advisors have not verified such information and make no guarantee, warranty, or representation about such information. It is your responsibility to independently confirm its accuracy and completeness. Any dimensions, specifications, floor plans, and information may not be accurate and should be verified by you prior to the lease or purchase of the property.

FOR SALE

VACANT OWNER/USER RESTAURANT

1212 East Northern Avenue Phoenix, AZ 85020



The information contained within this brochure has been obtained from sources other than Western Retail Advisors, LLC. Western Retail Advisors have not verified such information and make no guarantee, warranty, or representation about such information. It is your responsibility to independently confirm its accuracy and completeness. Any dimensions, specifications, floor plans, and information may not be accurate and should be verified by you prior to the lease or purchase of the property.