

# 653

N TOWN CENTER DR

LAS VEGAS, NV 89144

MEDICAL OFFICE  
FOR LEASE

SUMMERLIN I  
749-5,930 SF



**MIKE TYMCZYN**

VICE PRESIDENT  
702.216.2371 **DIRECT**  
miket@dcghealthcare.com  
BS.0147041



HEALTHCARE

CORFAC  
INTERNATIONAL

## PROPERTY HIGHLIGHTS

- On the campus of Summerlin Hospital Medical Center
- Professional property management
- Generous tenant improvement allowances
- Current specialties include: **Primary Care - Cardiology - Urology - Oncology - Orthopedics - Family Dentistry - Endocrinology - Neurological Surgery - Plastic Surgery**



# AREA MAP



SUMMERLIN PARKWAY



SUMMERLIN III

SUMMERLIN PARKWAY

SUMMERLIN I

SUMMERLIN II

N HUALAPAI WAY

N TOWN CENTER DR



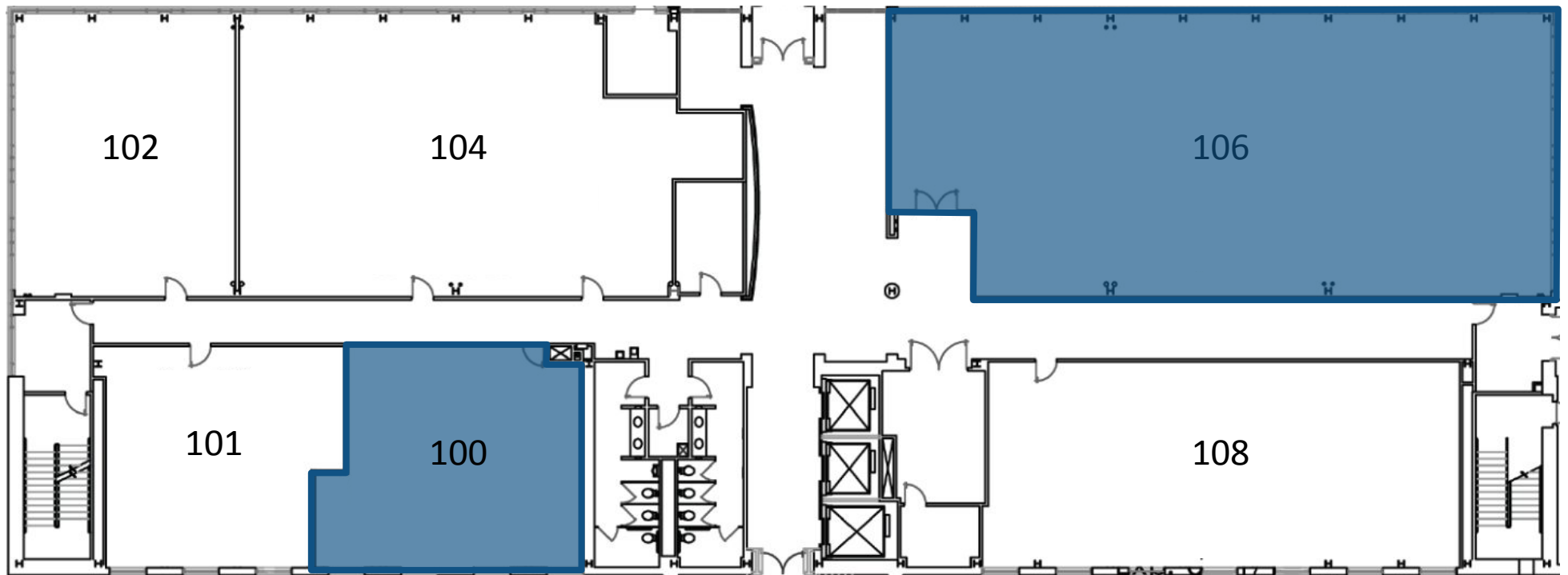
# SUMMERLIN MEDICAL OFFICE I



# FIRST FLOOR

## AVAILABLE SUITES

SUITE 100	1,239 SF
SUITE 106	4,085 SF



SUITE 106 SUMMERLIN MEDICAL OFFICE I



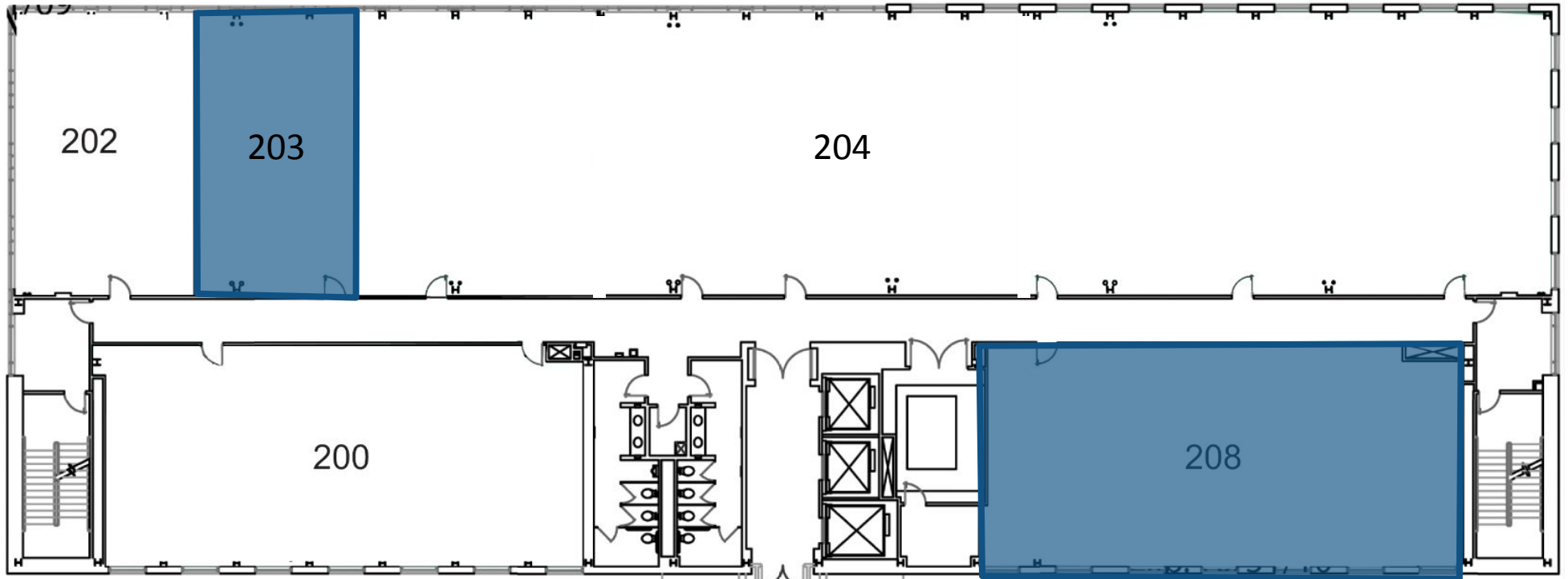
SUITE 106 SUMMERLIN MEDICAL OFFICE I



## SECOND FLOOR

## AVAILABLE SUITES

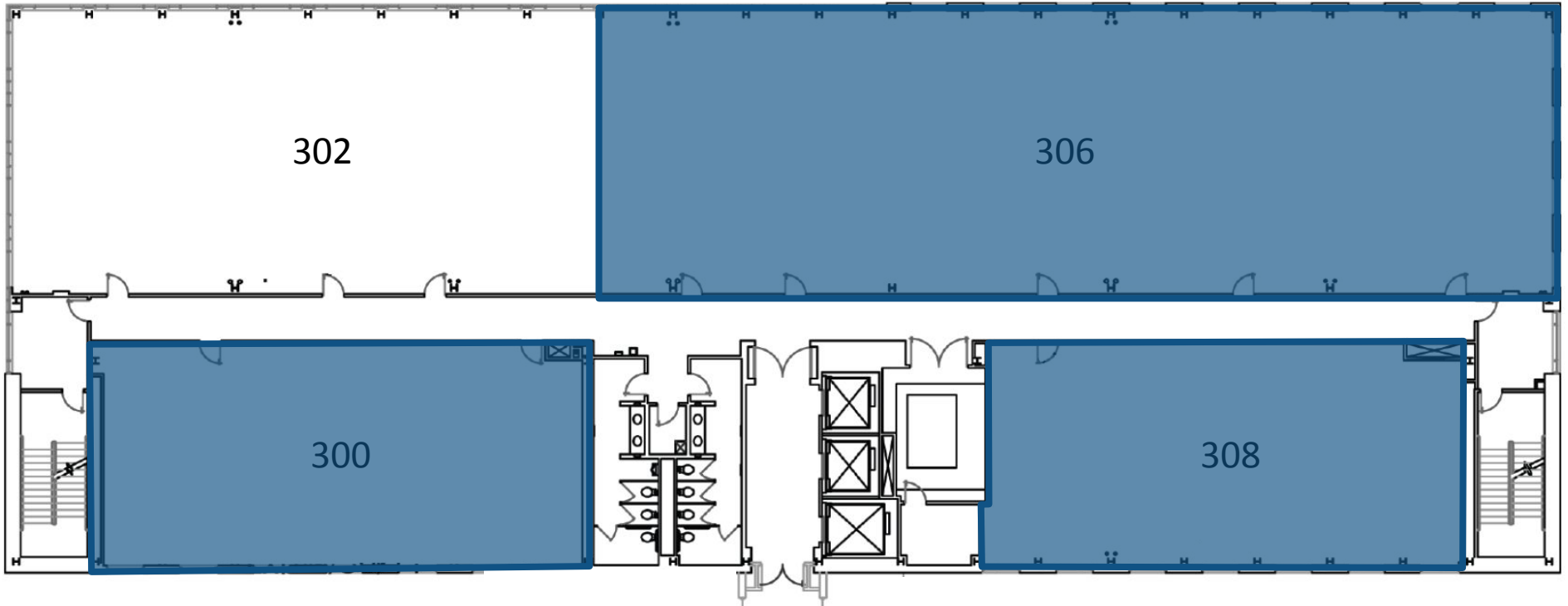
SUITE 203	749 SF
SUITE 208	2,356 SF



# THIRD FLOOR

## AVAILABLE SUITES

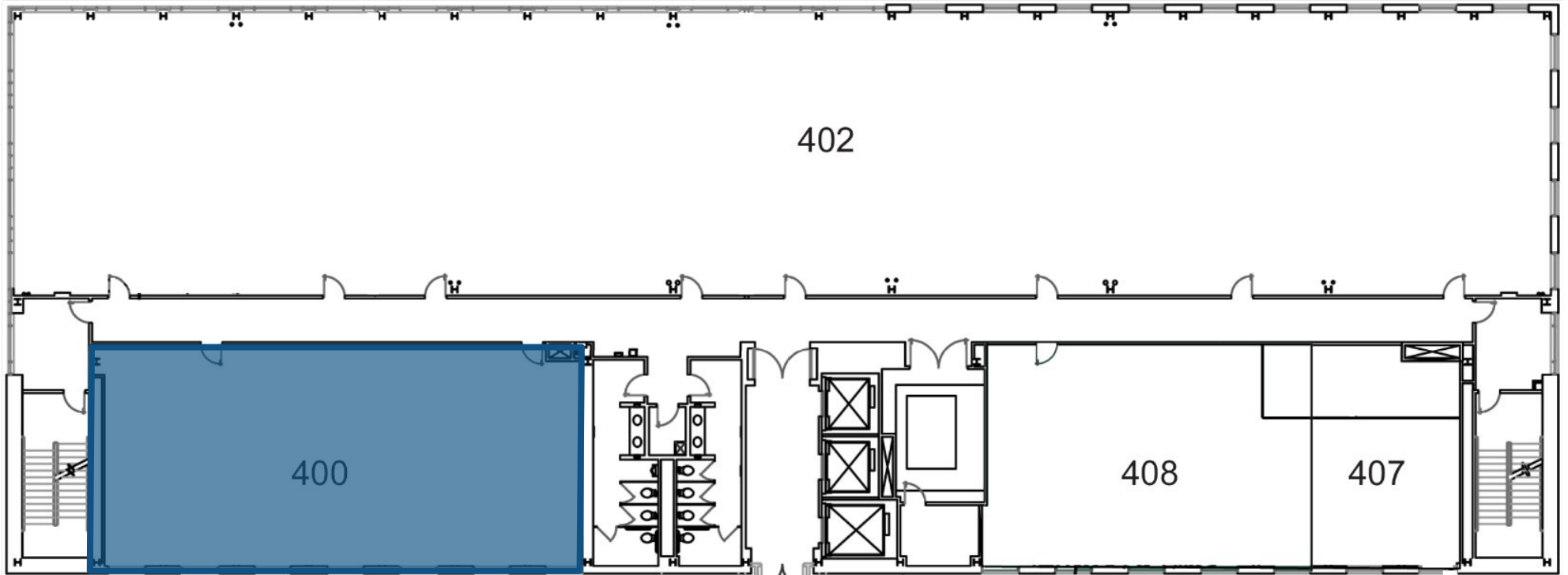
SUITE 300	2,394 SF
SUITE 306	5,930 SF
SUITE 308	2,356 SF



# FOURTH FLOOR

## AVAILABLE SUITES

SUITE 400	2,390 SF
-----------	----------



# FIFTH FLOOR

## AVAILABLE SUITES

SUITE 502	3,882 SF
SUITE 507	2,024 SF



SUITE 502 SUMMERLIN MEDICAL OFFICE I



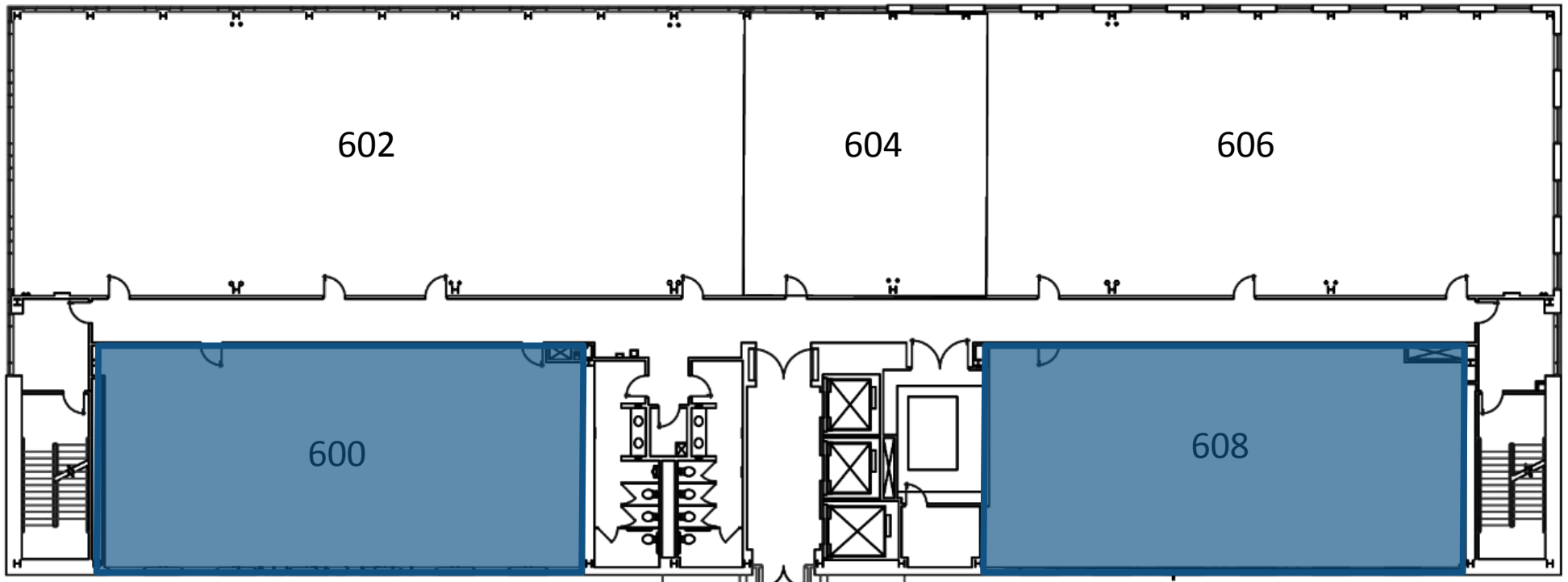
SUITE 502 SUMMERLIN MEDICAL OFFICE I



# SIX FLOOR

## AVAILABLE SUITES

SUITE 600	2,390 SF
SUITE 608	2,356 SF



SUITE 600 SUMMERLIN MEDICAL OFFICE I



SUITE 600 SUMMERLIN MEDICAL OFFICE I



# HOSPITAL SERVICES



## Cardiovascular

- Chest Pain Center
- Angioplasty
- Cardiac catheterization
- Pacemaker/defibrillator implants
- Bi-ventricular implants
- Peripheral vascular interventions
- Cardiovascular surgery
- Intravascular Ultrasound

## Endoscopic Procedures

## Laboratory Services

## Maternity Services

- Triage
- Antepartum
- Labor and Delivery
- Postpartum
- Level I-II-III Neonatal ICU

## Rehabilitation

- Inpatient Physical Therapy
- Speech Therapy
- Occupational Therapy
- Short-term inpatient rehabilitation unit

## Diabetes Treatment Center

- Inpatient care

## Dialysis

- Inpatient care

## Emergency Services

- Urgent and emergency care 24/7
- Pediatric ER
- Advanced primary stroke center

## Orthopedics

## Radiology

- Angiography
- CT scan
- MRI
- Nuclear Medicine
- X-ray
- Digital Mammography

## Surgery

- Inpatient
- Outpatient
- Robotic

## Wound Care

- Inpatient care
- Outpatient care
- Hyperbaric medicine

**MIKE TYMCZYN**

VICE PRESIDENT  
702.216.2371 **DIRECT**  
miket@dcghealthcare.com  
BS.0147041



HEALTHCARE

