

**FOR LEASE: OUTPATIENT MEDICAL SPACE ON "PILL HILL"**



SCAN OR CLICK  
FOR VIRTUAL  
SPECULATIVE TOUR

## **Peachtree Dunwoody Medical Center**

**1,155 – 5,557 RSF Available**

**5505 Peachtree Dunwoody Road NE, Atlanta, GA 30342**

Proudly owned by

**Healthpeak<sup>®</sup>** | **DOC  
LISTED  
NYSE**

**SCOTT DUNKLE, VICE PRESIDENT - LEASING**  
**414.367.5556 | [SDunkle@healthpeak.com](mailto:SDunkle@healthpeak.com)**



## PROPERTY OVERVIEW

Strategically located on "Pill Hill"—Atlanta's premier medical destination—Peachtree Dunwoody Medical Center offers prime medical suites featuring professional on-site property management. Amenities include a pharmacy, daytime concierge services, and an ATM. Specialties include orthopedics, ophthalmology, dermatology, podiatry, dentistry, psychiatry, Internal medicine, family medicine, physical therapy, occupational therapy, a surgery center, and a medical spa. In addition, the property has convenient access points to Interstate 285, GA-400, T. Harvey Mathis Parkway, and the MARTA Medical Center station.

Proudly owned by

Healthpeak® | DOC  
LISTED  
NYSE

---

### Campus Setting

Located on Atlanta's "Pill Hill"

---

### Building Details

131,553 RSF  
Six stories

---

### Available

Suite 380: 4,068 RSF  
Suite 420: 4,443 RSF  
Suite 440: 1,155 RSF  
Suite 460: 3,722 RSF  
Suite 470: 3,610 RSF  
Suite 595: 1,643 RSF  
Suite 548: 5,557 RSF  
Suite 640: 3,682 RSF  
Suite 645: 1,441 RSF | Storage 269 RSF

---

### Access

Convenient access to I-285

---

SCOTT DUNKLE, VICE PRESIDENT - LEASING  
414.367.5556 | [SDunkle@healthpeak.com](mailto:SDunkle@healthpeak.com)





## LOCAL HOSPITALS

Located in the heart of Atlanta's most dynamic health care market, Pill Hill is known as an exceptional center for medical innovation and patient care. The area features three nationally acclaimed hospitals: Northside Hospital of Atlanta, Emory at Saint Joseph's, and Children's Healthcare of Atlanta at Scottish Rite. These hospitals provide a diverse array of services to residents in and around Atlanta's metropolitan area. In addition to the hospitals, there are hundreds of physician practices and outpatient centers within the area, all served by a dedicated MARTA station, Medical Center Station.

## AREA OVERVIEW

As the capital of Georgia and home to the world's most traveled airport, Hartsfield-Jackson Atlanta International Airport, Atlanta also has the country's third-largest concentration of Fortune 500 companies, including Coca-Cola, Delta Airlines, The Home Depot, UPS, Chick-fil-a, and Porsche. With more than 1.9 million jobs forecasted to be created by 2040 and the most affordable cost of living among the U.S.'s ten largest metro areas, this growing city offers a prime location for your medical practice.

Proudly owned by

Healthpeak® | DOC LISTED NYSE

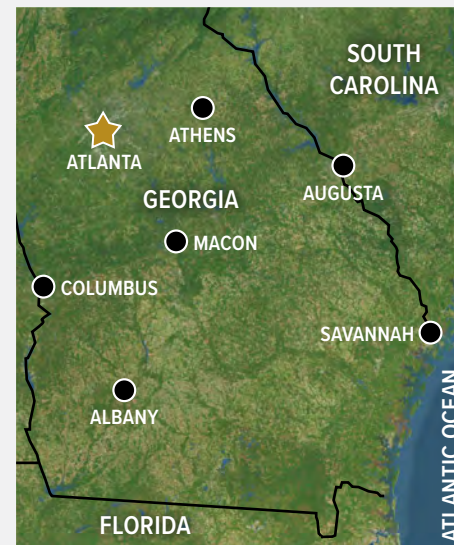
SCOTT DUNKLE, VICE PRESIDENT - LEASING  
414.367.5556 | [SDunkle@healthpeak.com](mailto:SDunkle@healthpeak.com)





## DEMOGRAPHICS

Distance	Total Population	Median Household Income
1-Mile	8,373	\$94,635
3-Miles	118,177	\$99,725
5-Miles	276,272	\$95,319



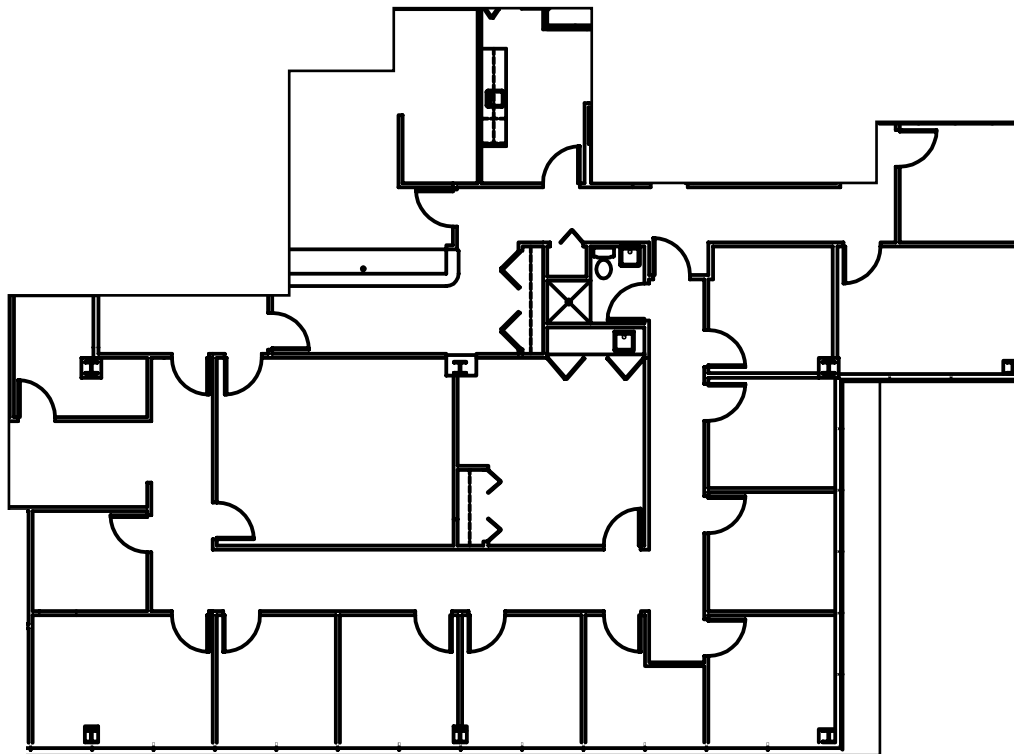
### Area Healthcare

- Athens, GA**
- St. Mary's Health Care System
  - Piedmont Athens Regional Medical Center
  - Landmark Hospital of Athens
- Augusta, GA**
- Doctors Hospital of Augusta
  - Charlie Norwood VA Medical Center
  - Augusta University Medical Center
- Columbus, GA**
- Piedmont Columbus Regional Midtown
  - Jack Hughston Memorial Hospital
  - Piedmont Columbus Regional Northside
  - St. Francis Medical Group
- Macon, GA**
- Atrium Health Navicent The Medical Center
  - Piedmont Macon Medical Center
  - Northside Hospital Cancer Institute Radiation Oncology - Macon
- Savannah, GA**
- Memorial Health University Medical Center
  - Candler Hospital

Proudly owned by

Healthpeak® | **DOC**  
LISTED  
NYSE

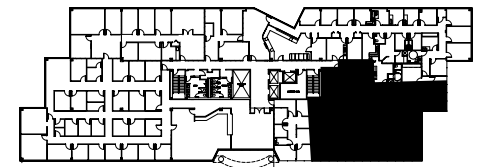
SCOTT DUNKLE, VICE PRESIDENT - LEASING  
414.367.5556 | SDunkle@healthpeak.com



## THIRD FLOOR

**Suite 380**  
**4,068 RSF**

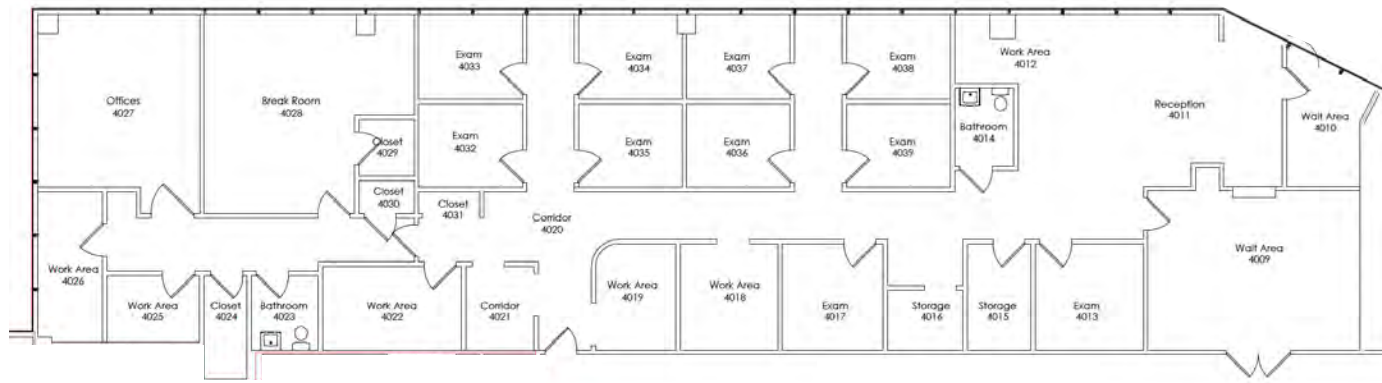
Key Plan



Proudly owned by

**Healthpeak<sup>®</sup>** | **DOC  
LISTED  
NYSE**

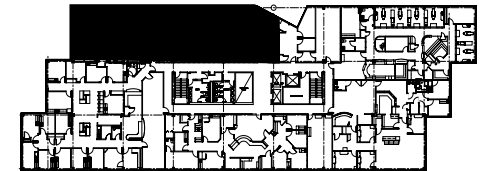
SCOTT DUNKLE, VICE PRESIDENT - LEASING  
414.367.5556 | [SDunkle@healthpeak.com](mailto:SDunkle@healthpeak.com)



## FOURTH FLOOR

**Suite 420**  
**4,443 RSF**

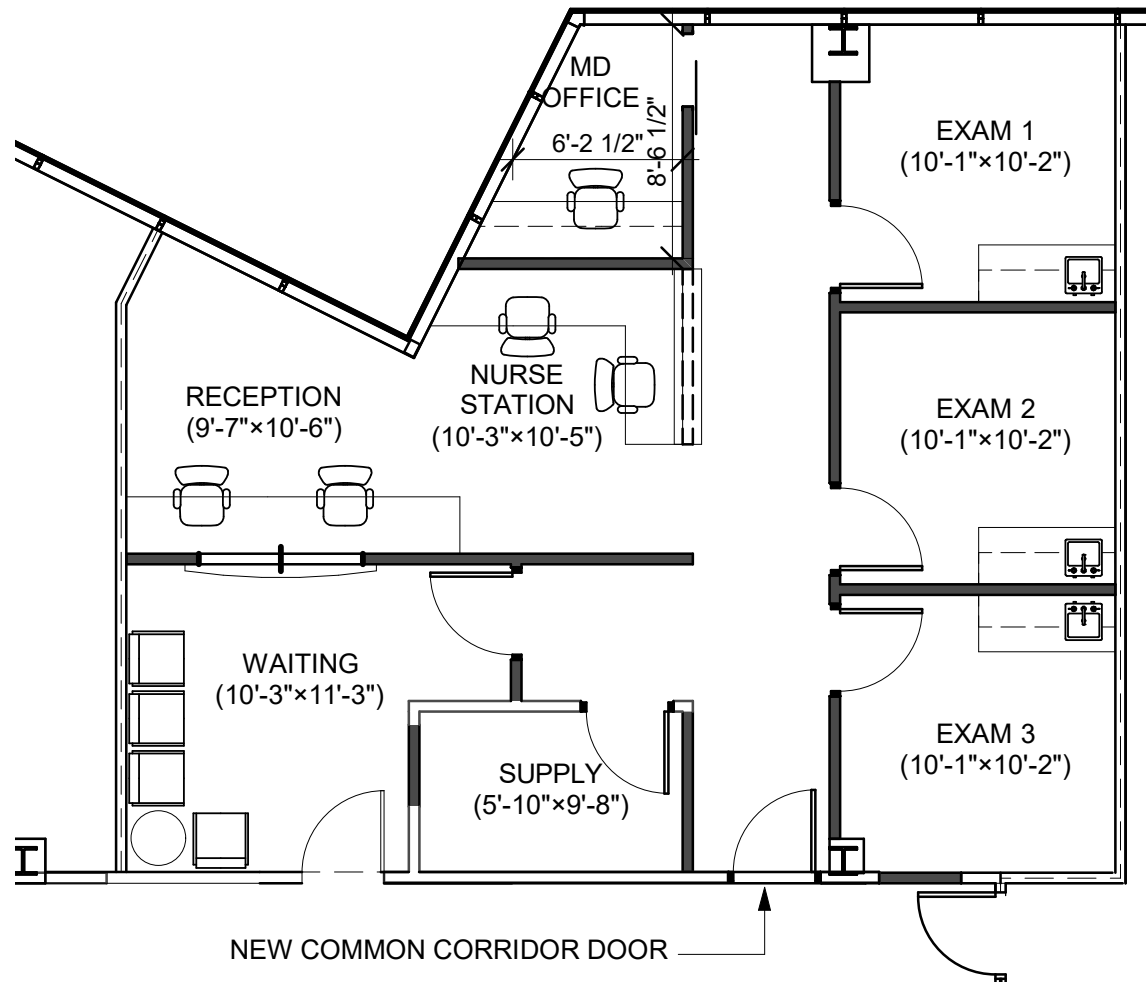
Key Plan



Proudly owned by

**Healthpeak®** | **DOC  
LISTED  
NYSE**

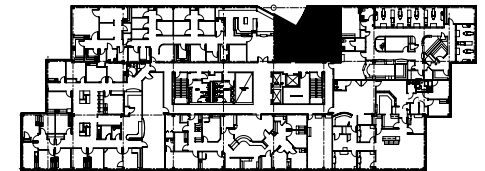
SCOTT DUNKLE, VICE PRESIDENT - LEASING  
414.367.5556 | [SDunkle@healthpeak.com](mailto:SDunkle@healthpeak.com)



## FOURTH FLOOR

**Suite 440**  
**1,155 RSF**

Key Plan



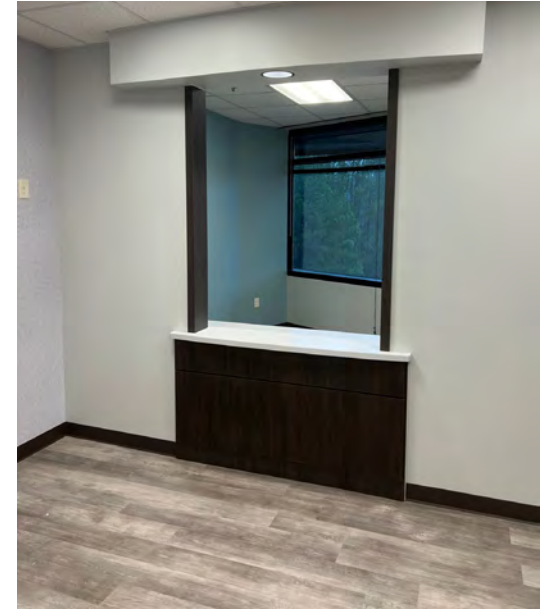
Proudly owned by

**Healthpeak®** | **DOC LISTED NYSE**

SCOTT DUNKLE, VICE PRESIDENT - LEASING  
414.367.5556 | SDunkle@healthpeak.com



## 440 SPEC SUITE PHOTOS

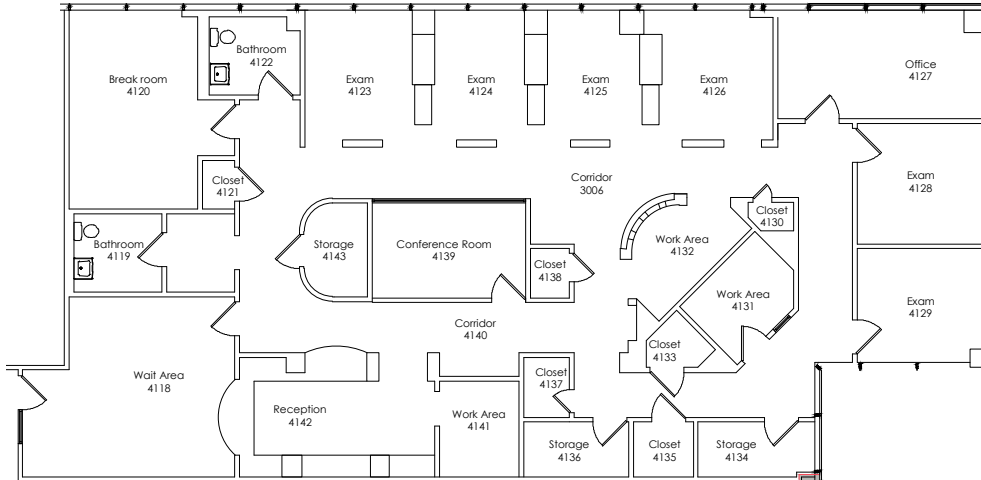


Proudly owned by

Healthpeak® | DOC  
LISTED  
NYSE

SCOTT DUNKLE, VICE PRESIDENT - LEASING  
414.367.5556 | [SDunkle@healthpeak.com](mailto:SDunkle@healthpeak.com)



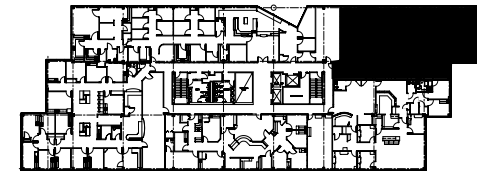


*Fully built out dental suite*

## FOURTH FLOOR

**Suite 460**  
**3,722 RSF**

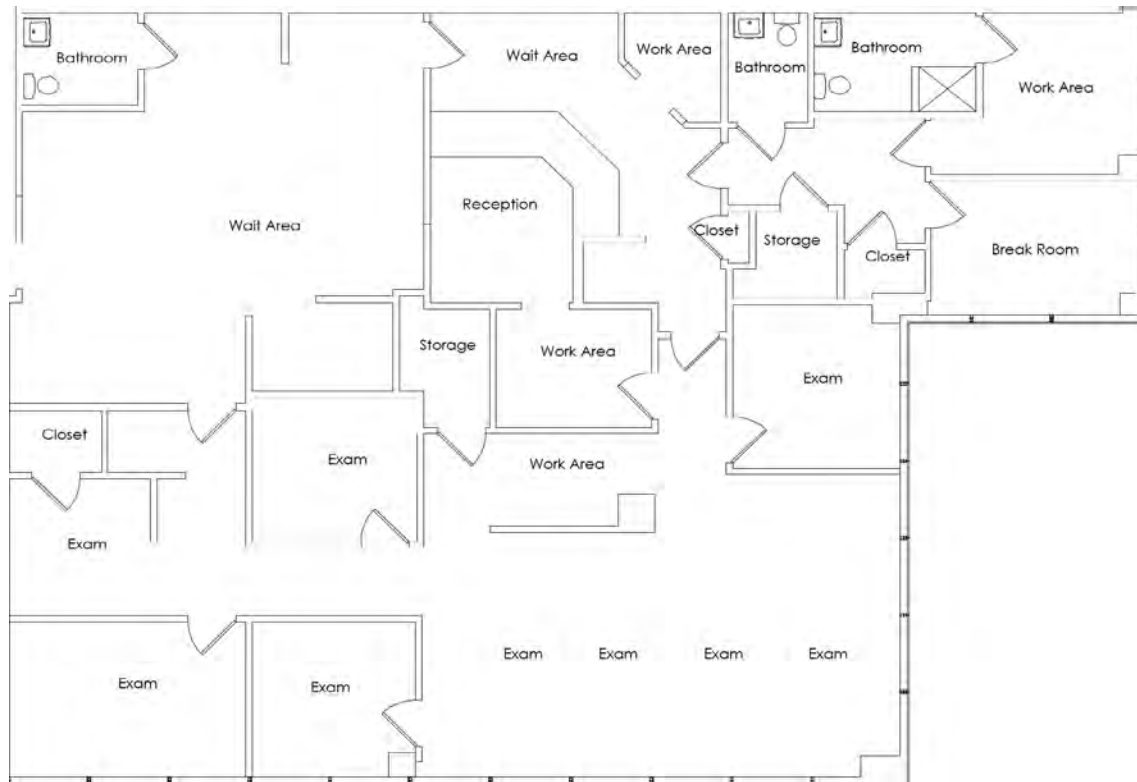
Key Plan



Proudly owned by

**Healthpeak<sup>®</sup>** | **DOC  
LISTED  
NYSE**

SCOTT DUNKLE, VICE PRESIDENT - LEASING  
414.367.5556 | [SDunkle@healthpeak.com](mailto:SDunkle@healthpeak.com)

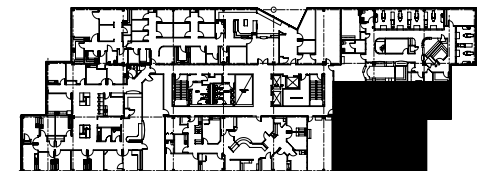


*Fully built out dental suite*

## FOURTH FLOOR

**Suite 470**  
**3,610 RSF**

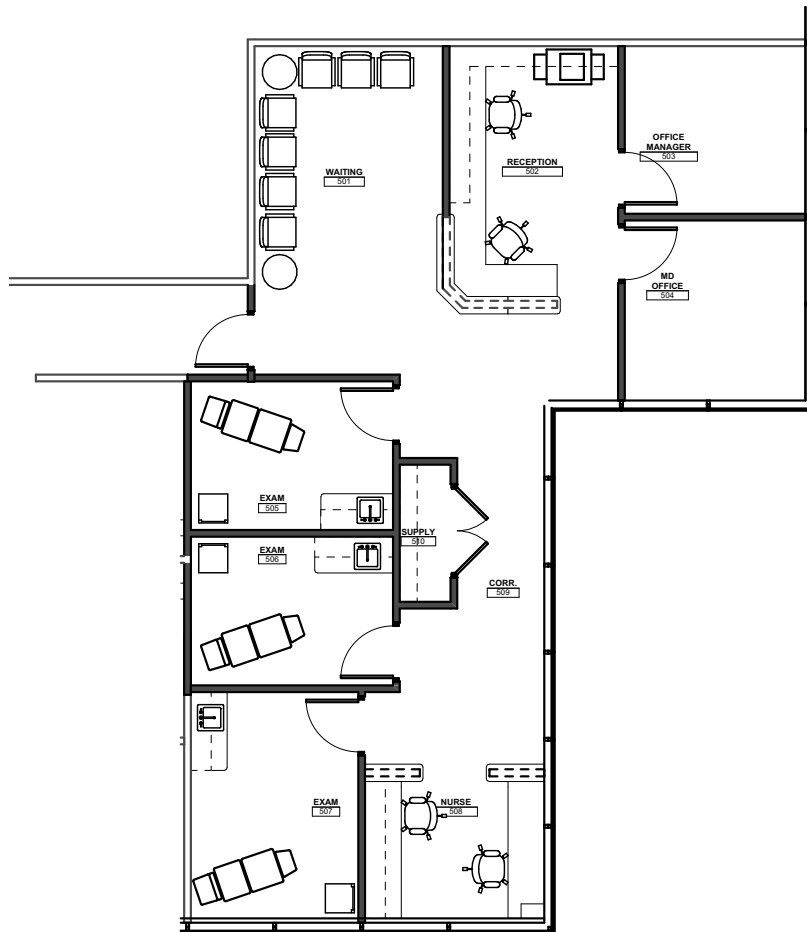
Key Plan



Proudly owned by

**Healthpeak<sup>®</sup>** | **DOC  
LISTED  
NYSE**

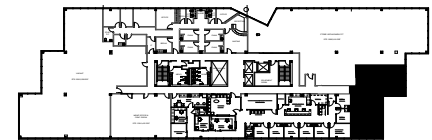
SCOTT DUNKLE, VICE PRESIDENT - LEASING  
414.367.5556 | [SDunkle@healthpeak.com](mailto:SDunkle@healthpeak.com)



## FIFTH FLOOR

**Suite 595**  
**1,643 RSF**

Key Plan



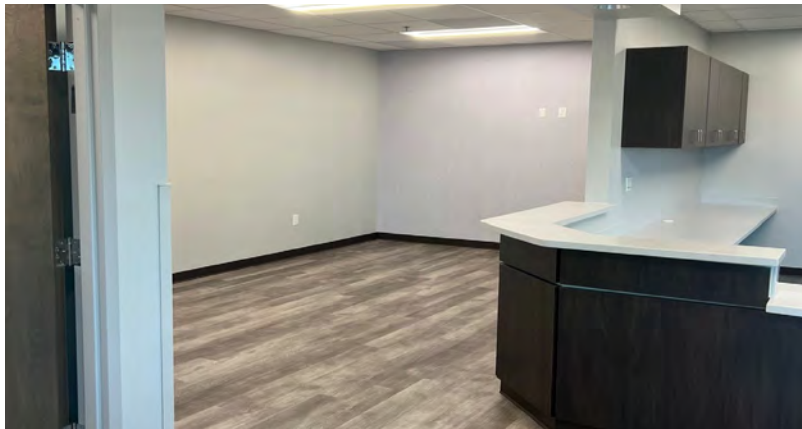
Proudly owned by

**Healthpeak®** | **DOC LISTED NYSE**

SCOTT DUNKLE, VICE PRESIDENT - LEASING  
414.367.5556 | [SDunkle@healthpeak.com](mailto:SDunkle@healthpeak.com)



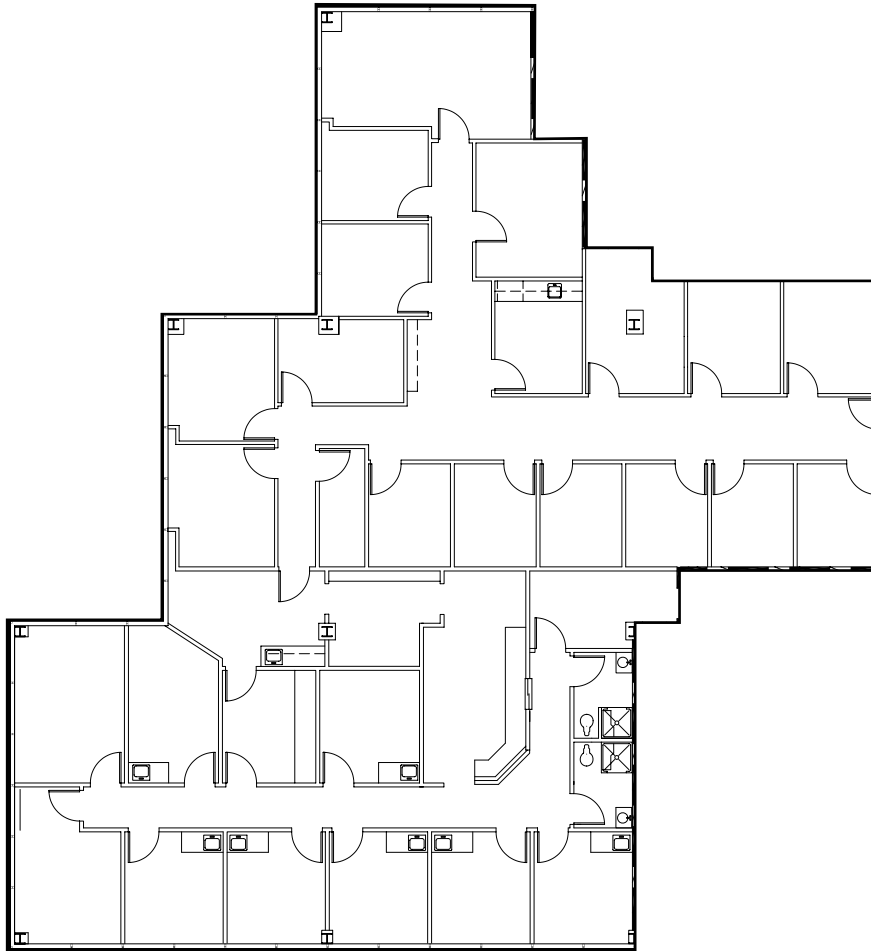
## 595 SPEC SUITE PHOTOS



Proudly owned by

Healthpeak® | DOC  
LISTED  
NYSE

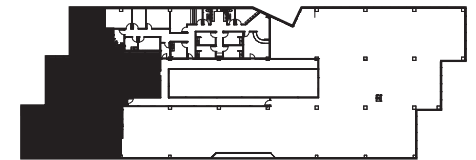
SCOTT DUNKLE, VICE PRESIDENT - LEASING  
414.367.5556 | [SDunkle@healthpeak.com](mailto:SDunkle@healthpeak.com)



## FIFTH FLOOR

**Suite 548**  
**5,557 RSF**

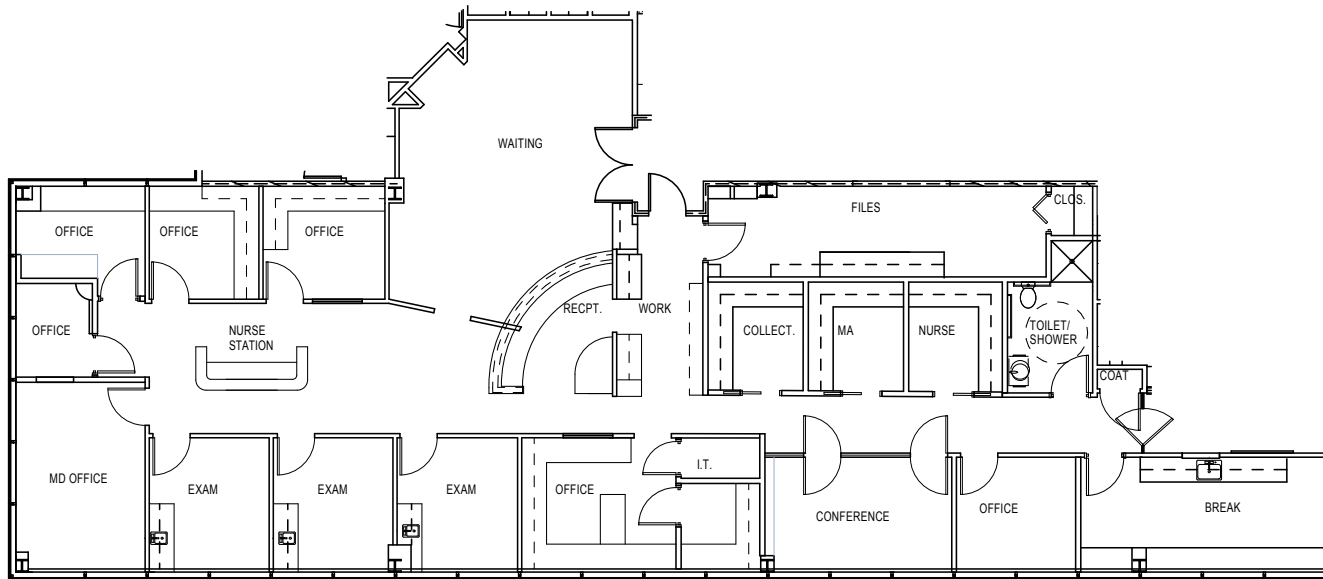
Key Plan



Proudly owned by

**Healthpeak®** | **DOC LISTED NYSE**

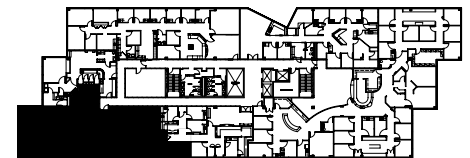
SCOTT DUNKLE, VICE PRESIDENT - LEASING  
414.367.5556 | SDunkle@healthpeak.com



## SIXTH FLOOR

**Suite 640**  
**3,682 RSF**

Key Plan

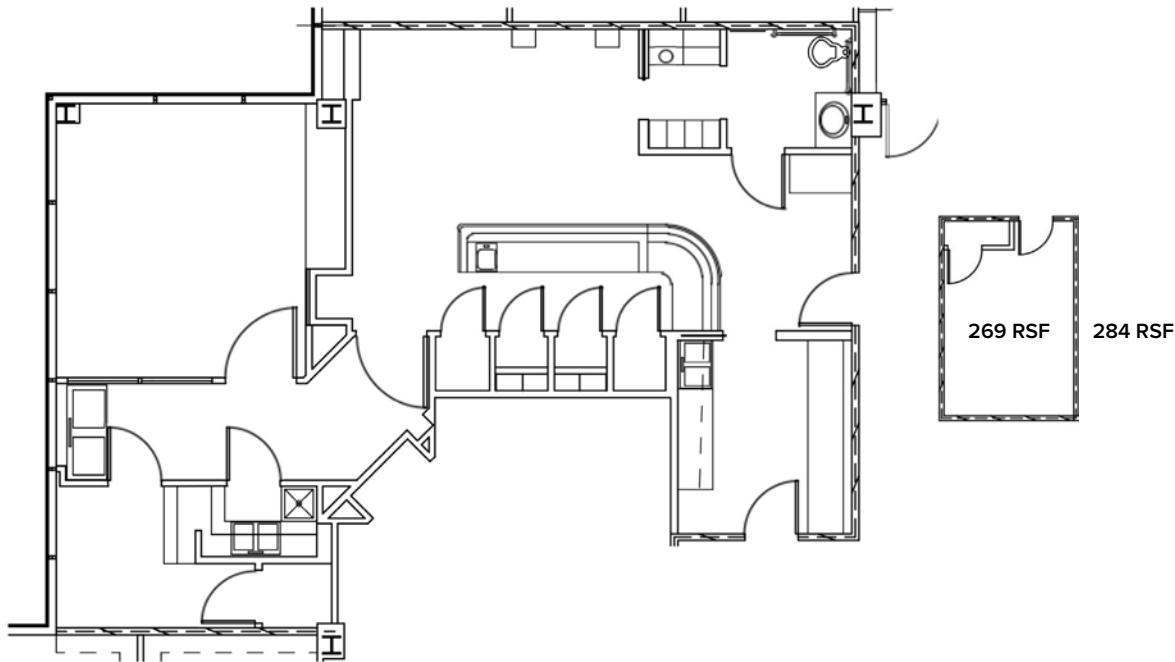


Proudly owned by

**Healthpeak®** | **DOC LISTED NYSE**

SCOTT DUNKLE, VICE PRESIDENT - LEASING  
414.367.5556 | [SDunkle@healthpeak.com](mailto:SDunkle@healthpeak.com)



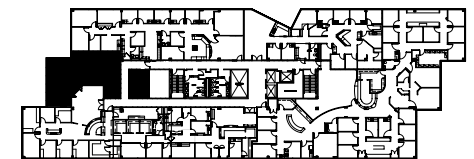


## SIXTH FLOOR

### Suite 645 1,441 RSF

Additional Storage: 269 RSF

Key Plan



Proudly owned by

Healthpeak® | **DOC**  
LISTED  
NYSE

SCOTT DUNKLE, VICE PRESIDENT - LEASING  
414.367.5556 | [SDunkle@healthpeak.com](mailto:SDunkle@healthpeak.com)

Healthpeak® | **DOC**  
LISTED  
NYSE

**SCOTT DUNKLE**  
Direct 414.367.5556  
Mobile 407.620.1496  
[SDunkle@healthpeak.com](mailto:SDunkle@healthpeak.com)

