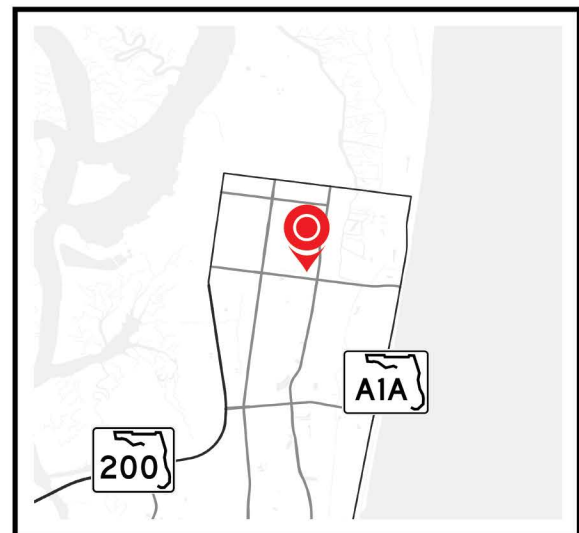




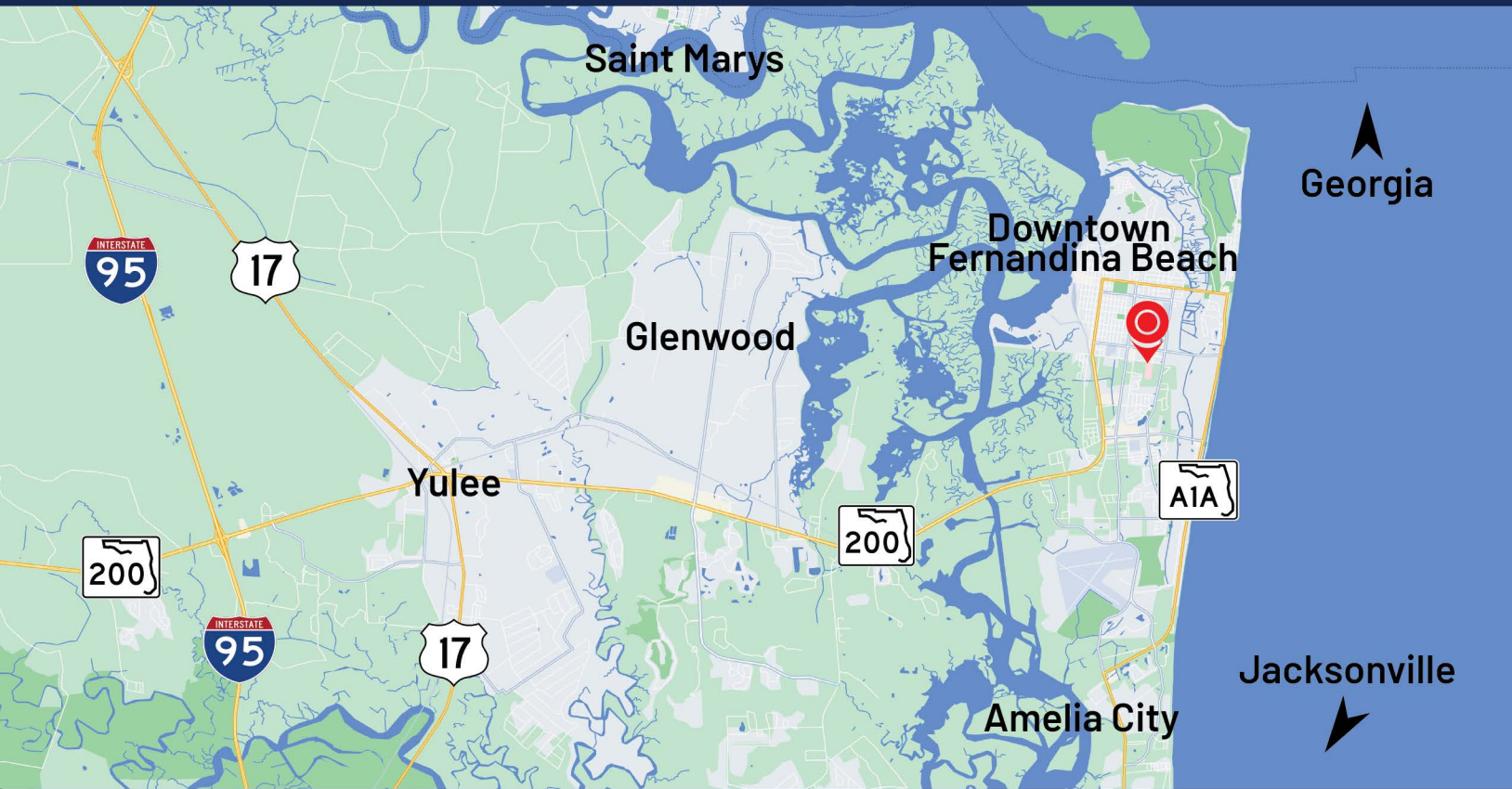
1865 Lime Street | Fernandina Beach, FL 32034

Medical - Professional Office Space

- ▶ New Multi-use Development at Fernandina Beach
- ▶ Professional/Medical and retail Opportunity
- ▶ Traffic Count: 12,015± AADT on 14th St. and Lime St
- ▶ Across from the Baptist Medical Center
- ▶ 2 Story 10k SF, 3 Story 15k SF
- ▶ Parking Ratio: Estimated 6.5± per 1000sf



Location Map



Demographic Information

HOUSEHOLDS

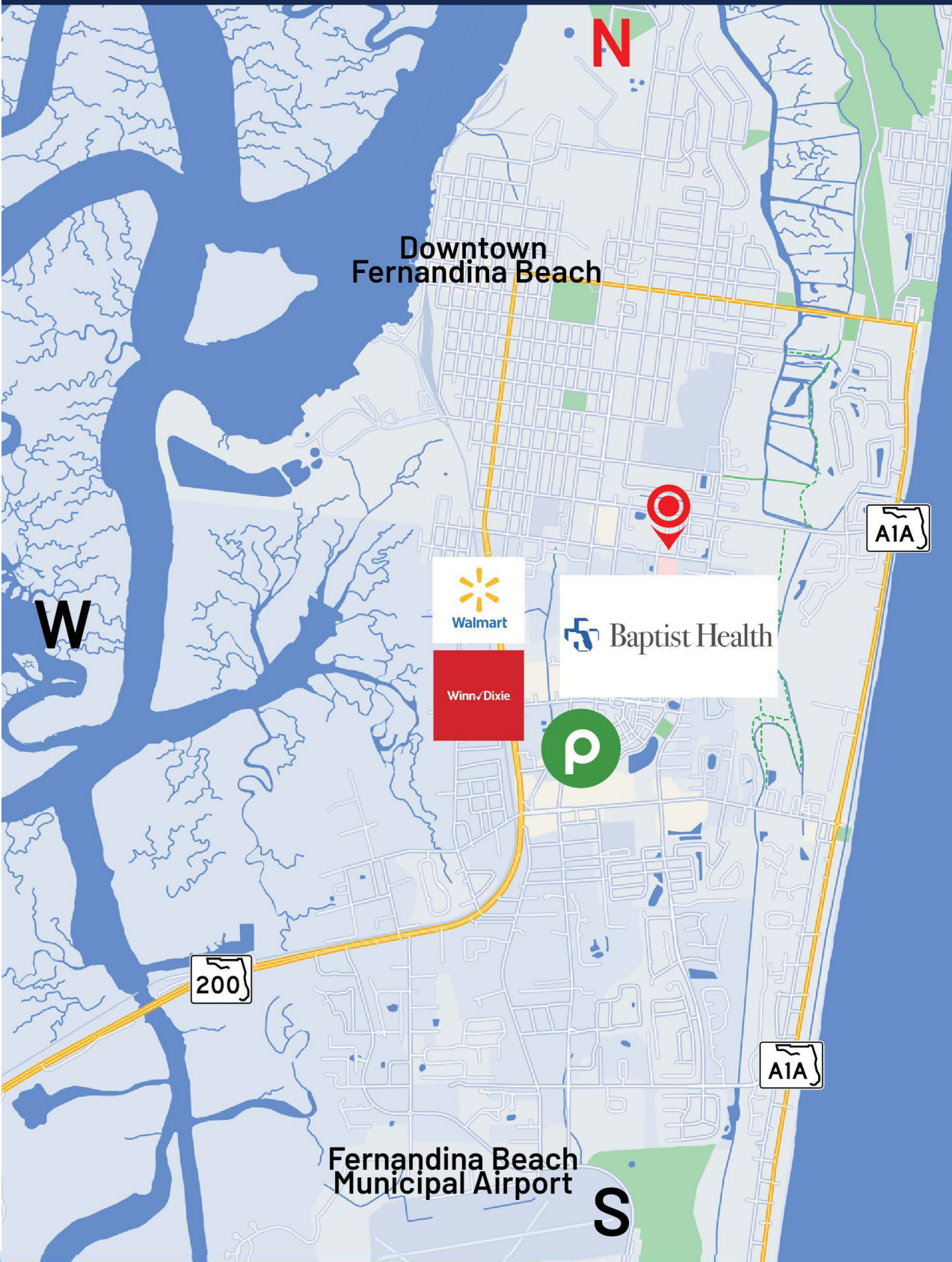
	2 Mile	3 Mile	10 Mile
2010 Households	5,692	9,310	20,680
2022 Households	6,527	12,055	27,954
2027 Projection	7,784	14,548	33,551

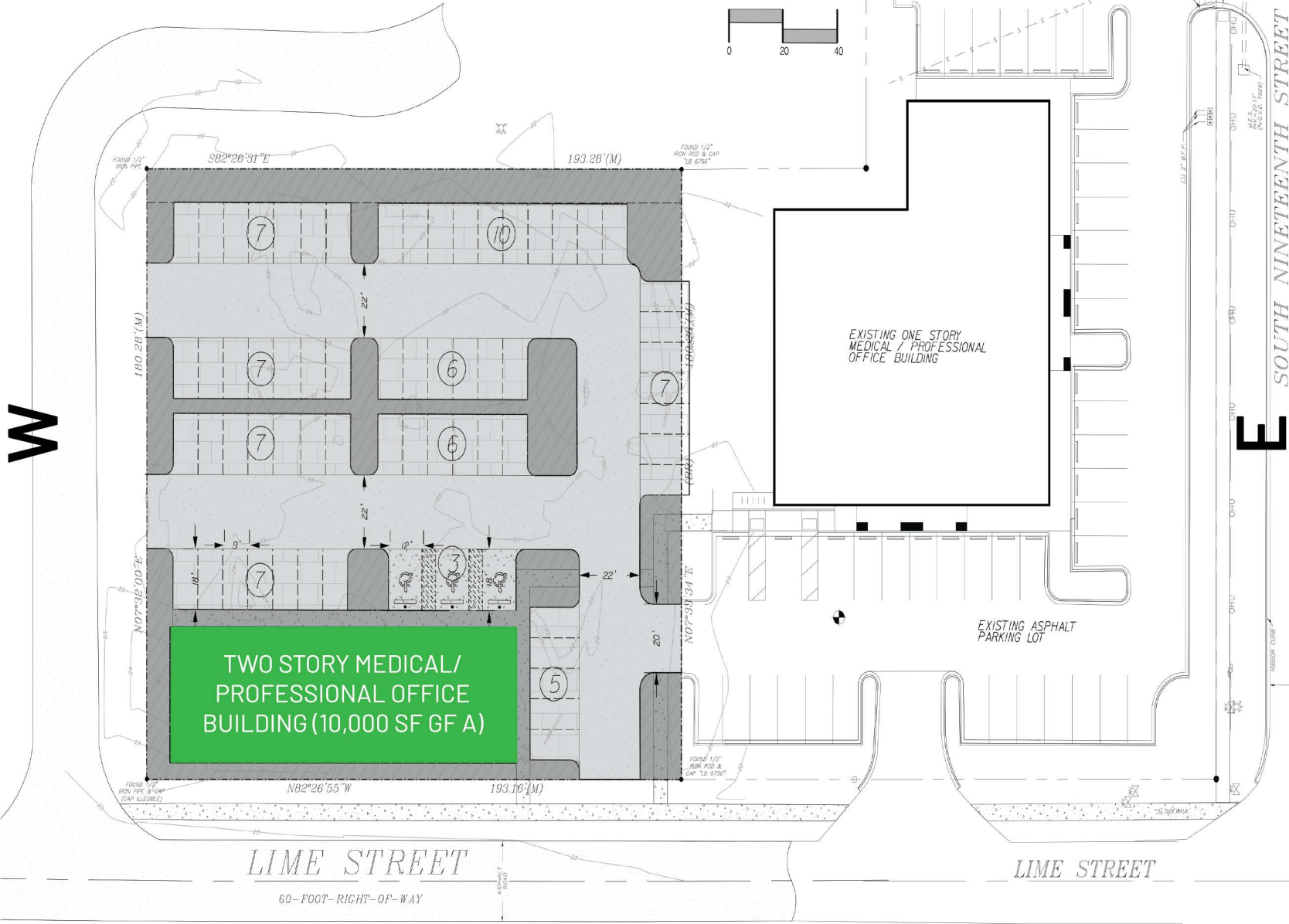
INCOME

	2 Mile	3 Mile	10 Mile
Average Household Income	\$88,715	\$94,777	\$94,348
Median Household Income	\$64,253	\$69,893	\$72,043

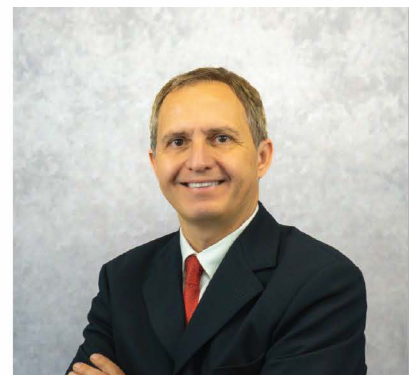


Baptist Health





Listing Agent



Turul Sengul

Senior Sales Executive
Office: (904) 242-6555
Mobile: (954) 980-5988
Turul.sengul@crossregions.com