

OUT PARCEL AVAILABLE

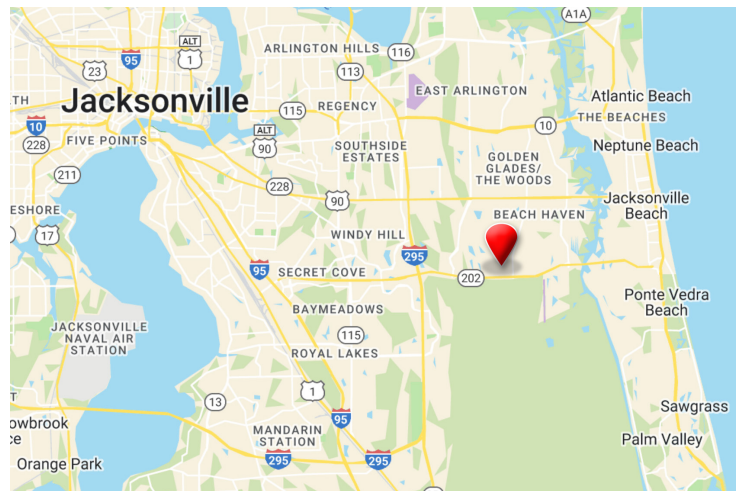
Hodges & J. Turner Butler Blvd | Jacksonville, FL



Click Here
For Project
Video
[vimeo](#)

PROJECT HIGHLIGHTS

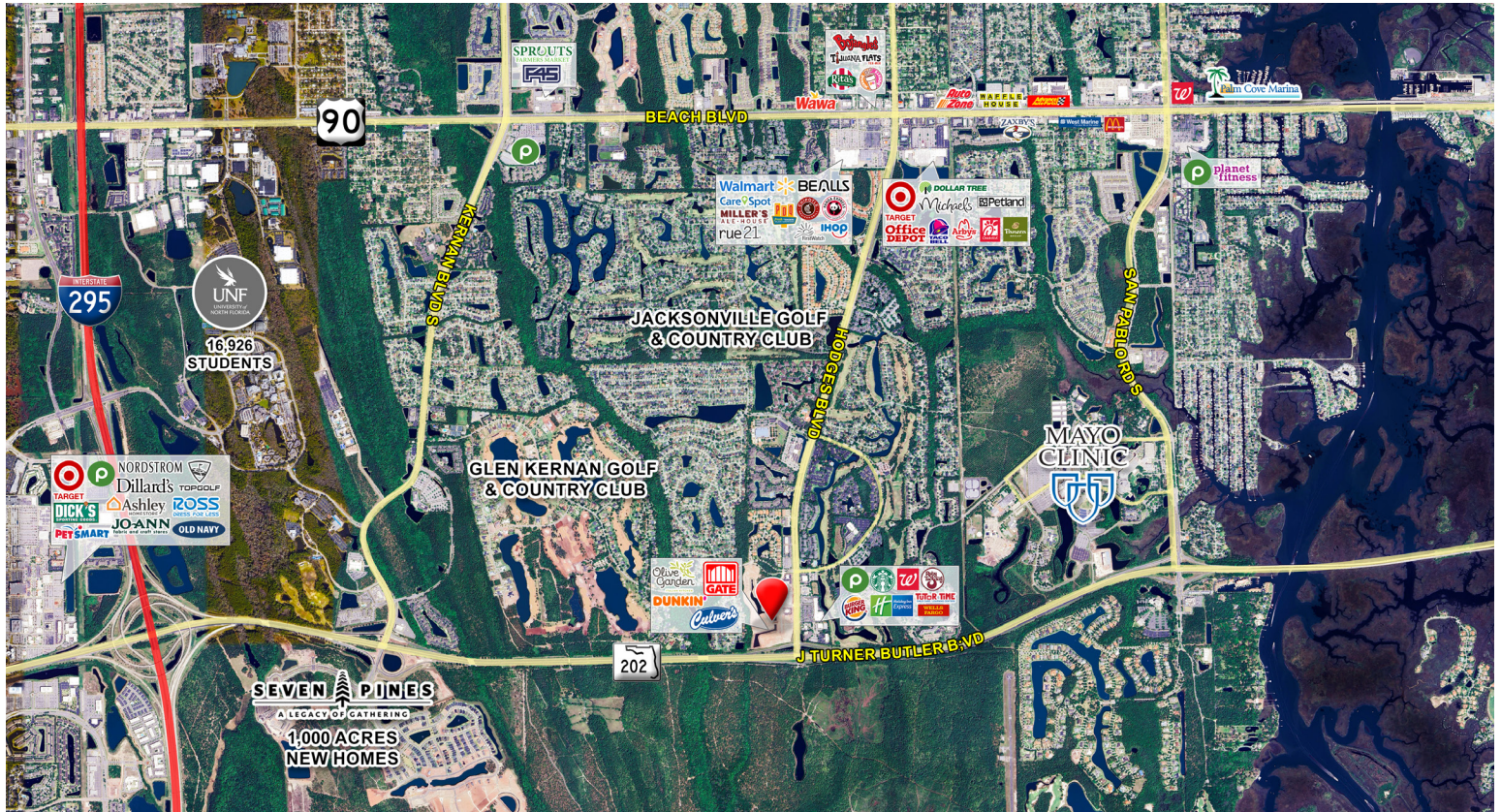
- One 1.1 acre out parcel available for ground lease or build to suit.
- Across the street from a Publix anchored shopping center.
- Located in front of RISE at Glen Kernan Park a 308 Unit 55+ Apartment Community.
<https://risegkp.com/>
- Last available parcel in the project.
- Located in front of the new 10 acre Glen Kernan Park development.
- New 176 key Embassy Suites.



Demographics	1 Mile	3 Miles	5 Miles
Population	6,451	43,728	151,773
Daytime Employees	13,070	28,880	114,833
Average Income	\$103,223	\$131,090	\$125,040
Median Age	40.0	38.0	38.0

OUT PARCEL AVAILABLE

Hodges & J. Turner Butler Blvd | Jacksonville, FL



OUT PARCEL AVAILABLE

Hodges & J. Turner Butler Blvd | Jacksonville, FL

