

**FOR LEASE**

Owned and Operated by  **LINK**

# 375 NORTHPOINTE DRIVE

375 A-F NORTHPOINTE DRIVE, FAIRFIELD, OH 45014

**52,400 - 203,500 SF**

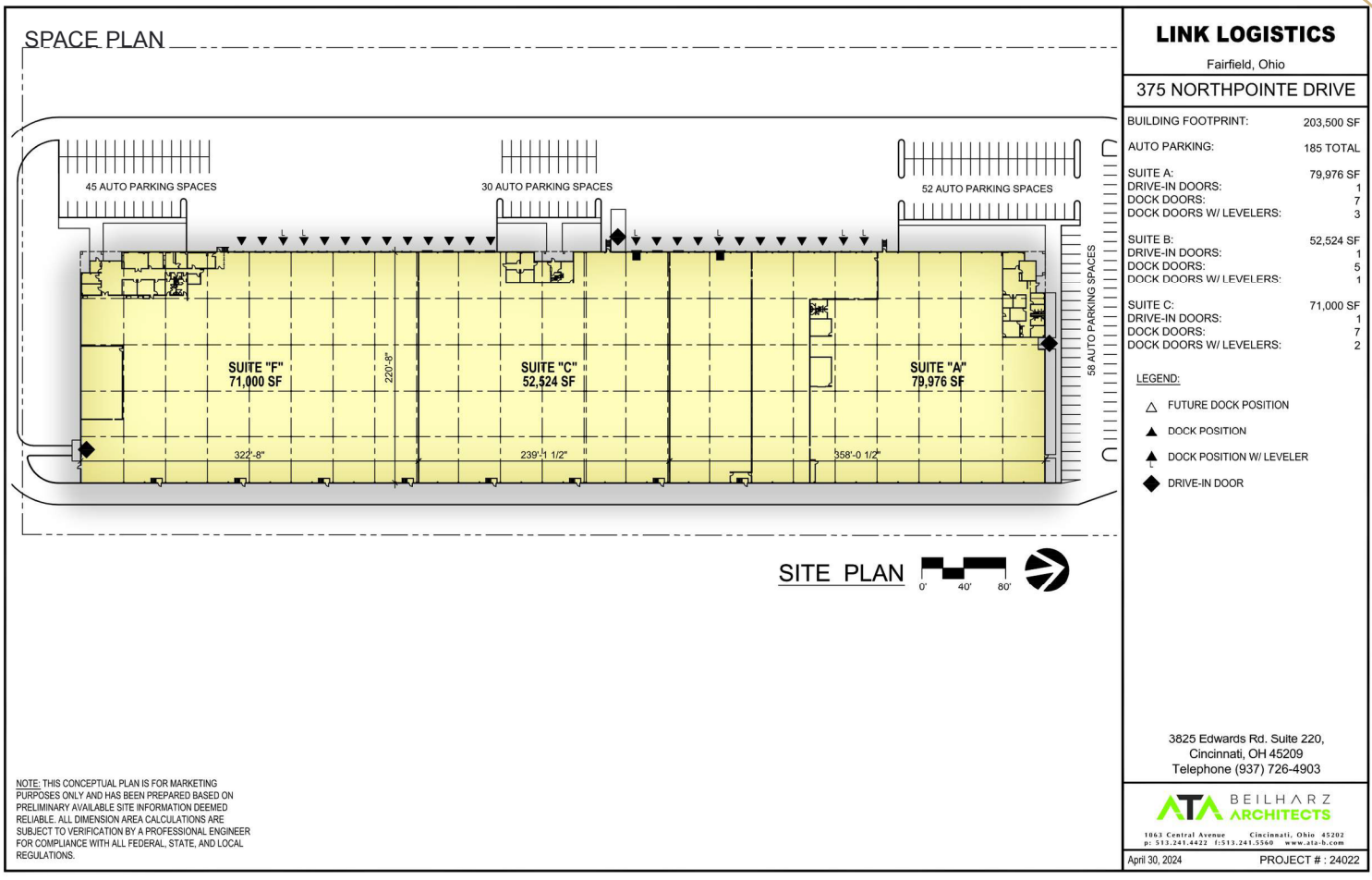


**LEASING INFO  
& CONTACT**

Seattle Stein	Director	(513) 763 3027 / <a href="mailto:seattle.stein@cushwake.com">seattle.stein@cushwake.com</a>
Dave Kelly	Managing Director	(513) 763 3009 / <a href="mailto:dave.kelly@cushwake.com">dave.kelly@cushwake.com</a>
Jeff Bender	Executive Vice Chair	(513) 763 3046 / <a href="mailto:jeff.bender@cushwake.com">jeff.bender@cushwake.com</a>

 **CUSHMAN &  
WAKEFIELD**

This is not an offer or acceptance of an offer to lease space. A lease will only be offered or made in a written agreement signed by landlord. No representation or warranty of any kind is made by landlord unless set forth in a written definitive lease executed by the landlord.



**PROPERTY HIGHLIGHTS**

Location	Fairfield, OH
Building Size	203,500 SF
Zoning	M-2, General Industrial
Jurisdiction	Fairfield, Butler County
Year Built	1989
Construction	Concrete/Masonry, Metal
Clear Height	22' - 26'
Column Spacing	40' - 44'; 40 x 222' Bays
Floors	6" Unreinforced
Fire Suppression	Conventional Wet System

Lighting	LED with Motion Detection
Truck Court	135' Concrete/Asphalt
Auto Parking	185 Total Bldg Spaces
HVAC	Gas Heat

**AVAILABILITY**

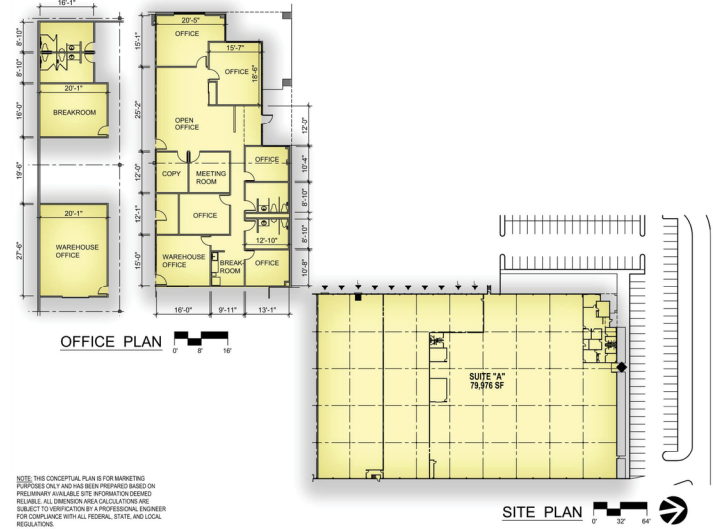
Suite - A	79,976 SF; 2,800 SF Office
Doors	(10) Docks; (1) Drive-in
Suite - C	52,524 SF; 1,576 SF Office
Doors	(6) Docks; (1) Drive-in
Suite - F	71,000 SF; 4,540 SF Office
Doors	(9) Docks; (1) Drive-in

## SUITE INFORMATION

### SUITE A

79,976 SF Total  
 2,800 SF Office  
 (10) Dock Doors  
 (1) Drive-in

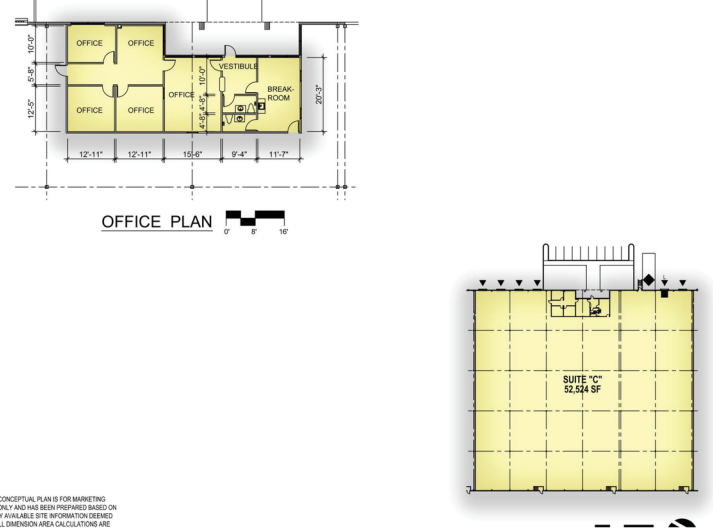
### SUITE A SITE PLAN



### SUITE C

52,524 SF Total  
 1,576 SF Office  
 (6) Dock Doors  
 (1) Drive-in

### SUITE C SITE PLAN



### SUITE F

71,000 SF Total  
 4,540 SF Office  
 (9) Dock Doors  
 (1) Drive-in

### SUITE F SITE PLAN

