

PARK PLACE 95 - FLEX SPACE AVAILABLE



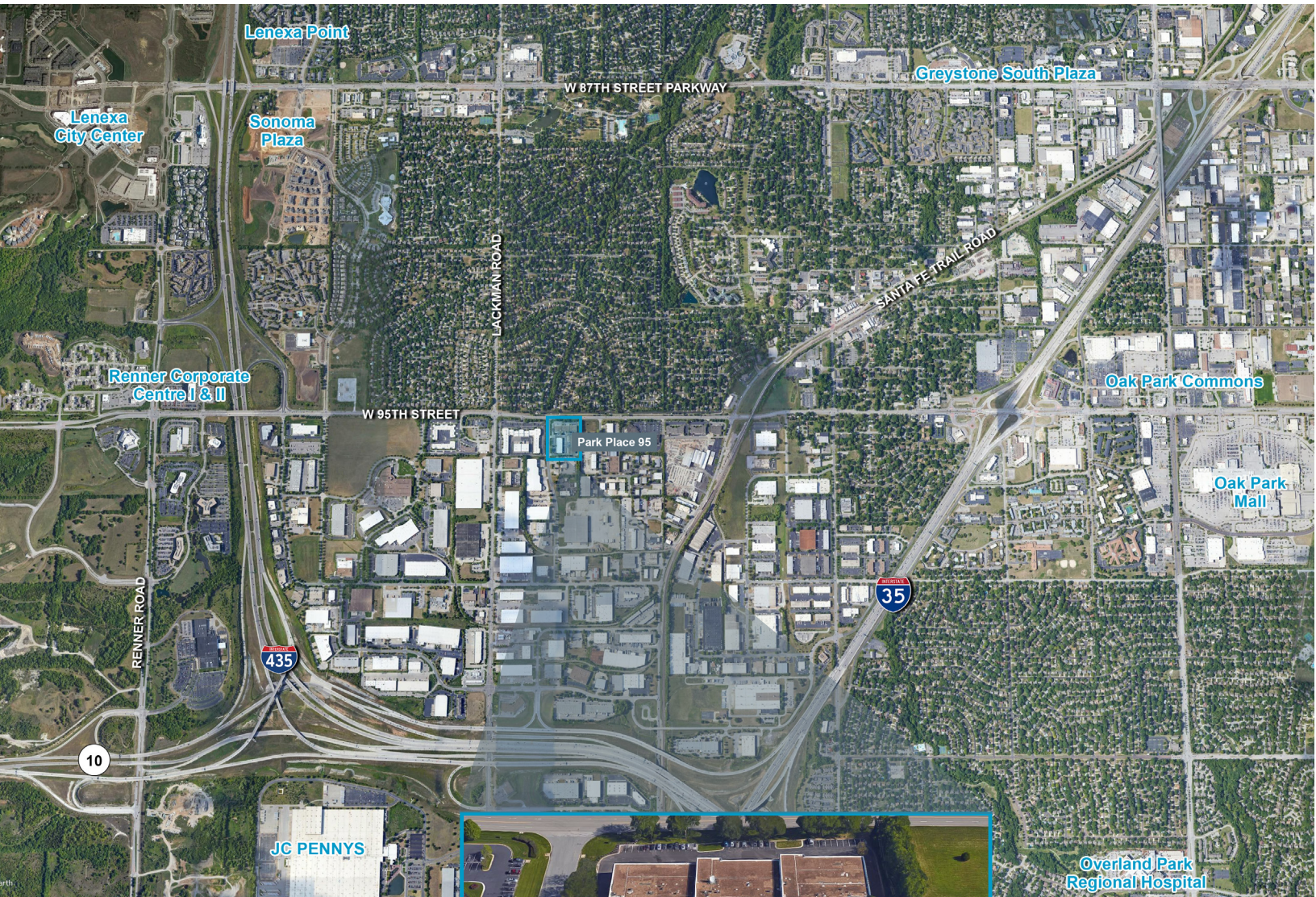
OFFICE SPACE HIGHLIGHTS

- **8,538 SF Available**
- High quality office, flex and industrial space with an unbeatable Johnson County Location.
- Competitive lease rates and a high-image business park environment.
- Less than 1.5 Miles from I-435 and I-35 Access, 3 Miles to K-10 with direct access to Lawrence, and 6 Miles to 69 Hwy providing access into South Overland Park

LEASING CONTACTS

MOLLY CRAWFORD MUNNINGHOFF
P (816) 701-5013
mccrawford@copaken-brooks.com

LENEXA, KANSAS



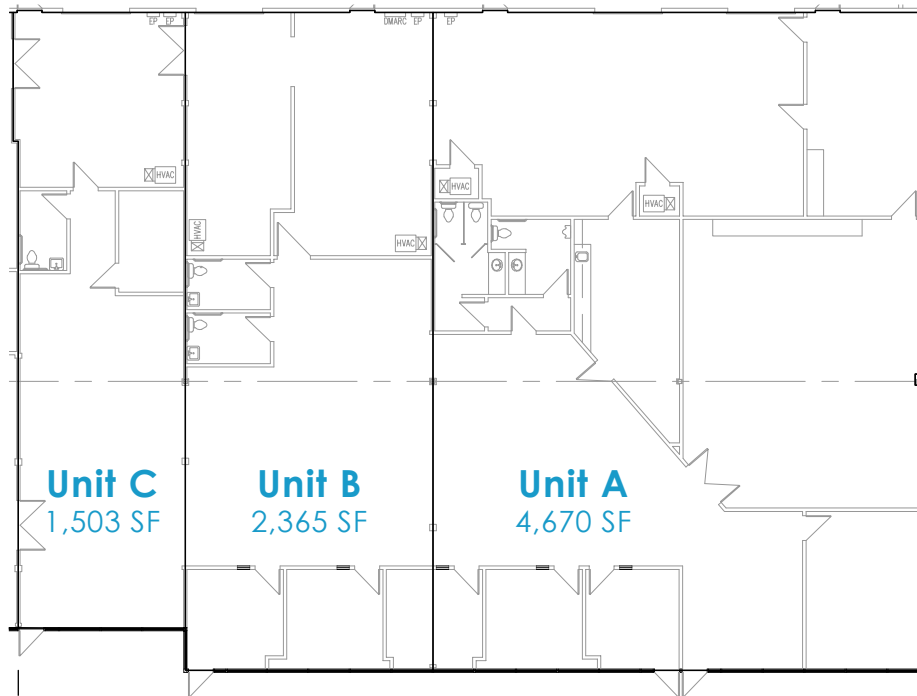
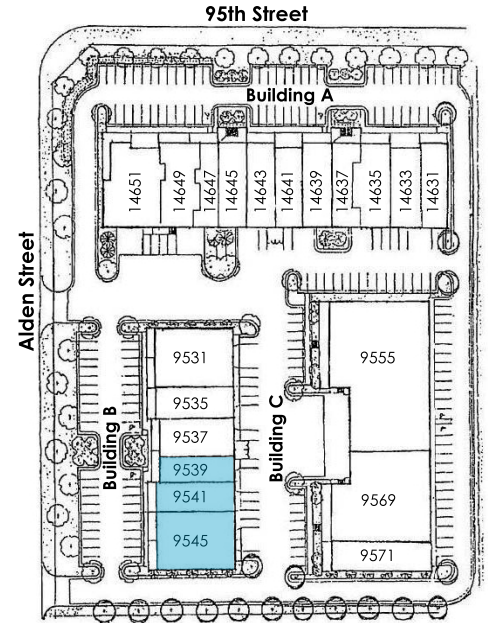
DEMOGRAPHIC HIGHLIGHTS

	1 mile	3 miles	5 miles
Population	6,687	65,899	204,762
Households	2,958	28,169	85,887
Avg HH Income	\$94,324	\$100,576	\$100,825

9545 ALDEN ST

BUILDING B

Total SF Available	8,538 SF
Drive In Doors	4
Clear Height	10'-14'4"
Parking	3/1,000 SF
Power	100 Amp Service



FLEX SPACE FOR LEASE



LEASING CONTACT

MOLLY CRAWFORD MUNNINGHOFF

P (816) 701-5013

mcrawford@copaken-brooks.com

All information furnished regarding property for sale or lease is from sources deemed reliable, but no warranty or representation is made as to the accuracy thereof and the same is subject to errors, omissions, changes of prices, rental or other conditions, prior sale or lease, or withdrawal without notice.