

**INDUSTRIAL  
FOR LEASE**

20,000 SF

± .75 ACRES  
OUTSIDE  
FENCED  
STORAGE

ADDITIONAL  
± 3.7 ACRES  
FOR LEASE



**TRANSWESTERN**

REAL ESTATE  
SERVICES

# 711 W KENNEDALE PARKWAY, BUILDING D

KENNEDALE, TX 76060 | TARRANT COUNTY

**FENCED OUTSIDE STORAGE**



## For Leasing Information:

**Lyndon Todd**

817.528.6680

Lyndon.Todd@transwestern.com

**Jeff Givens**

817.259.3536

Jeff.Givens@transwestern.com

## Property Information:

- 20,000 SF
- 4 Grade-Level Doors
- ± .75 Acres Outside Fenced Storage
- Additional ± 3.7 Acres for Lease
- Fully Fenced
- 100% HVAC
- RATE: \$7.25/SF NNN

The information provided herein was obtained from sources believed reliable; however, Transwestern makes no guarantees, warranties or representations as to the completeness or accuracy thereof. The presentation of this property is submitted subject to errors, omissions, change of price or conditions, prior sale or lease, or withdrawal without notice. Copyright © 2024 Transwestern.

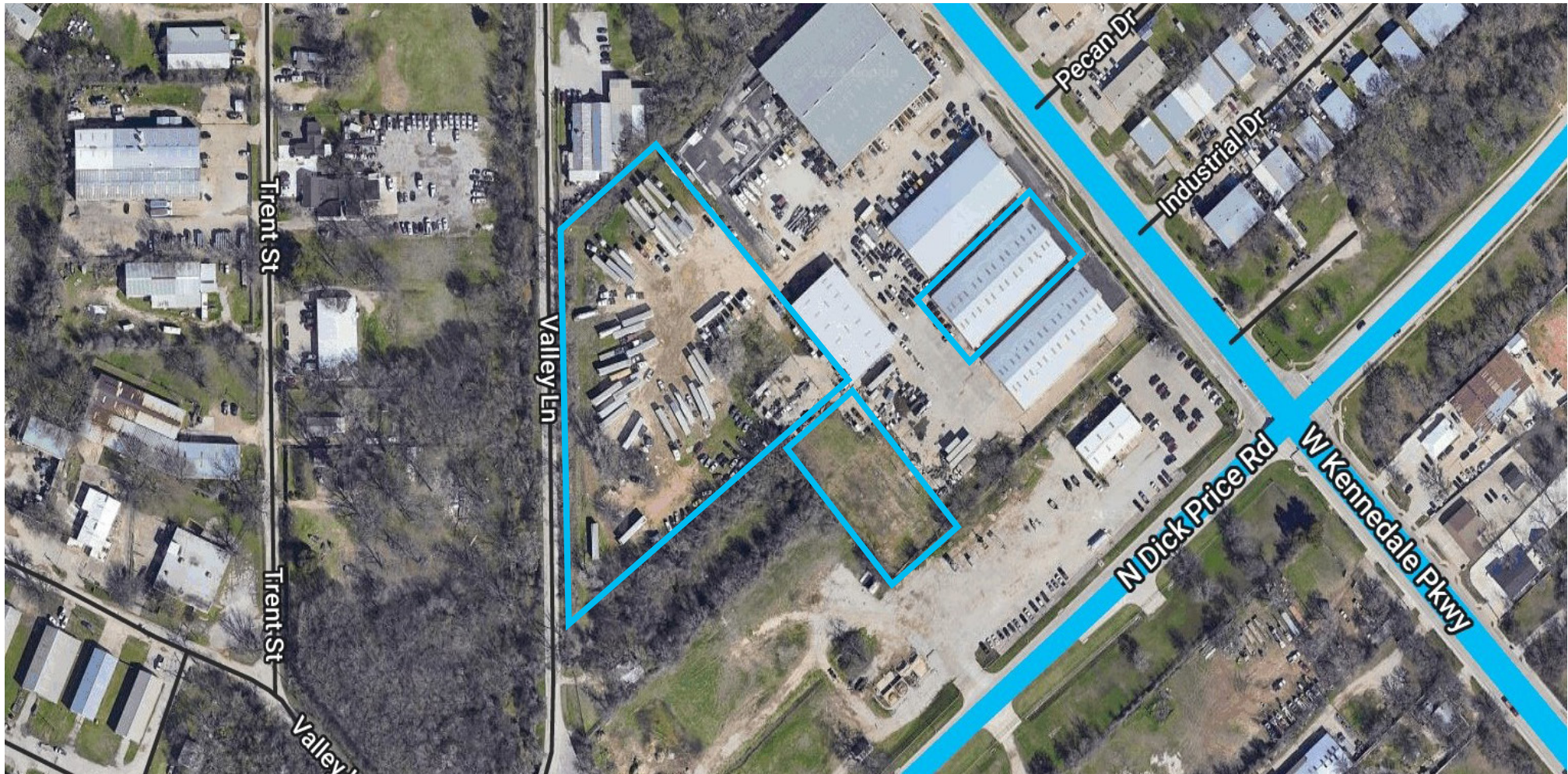
# 711 W KENNEDALE PARKWAY, BUILDING D

KENNEDALE, TX 76060 | TARRANT COUNTY



TRANSWESTERN

REAL ESTATE  
SERVICES



## For Leasing Information:

**Lyndon Todd**

817.528.6680

Lyndon.Todd@transwestern.com

**Jeff Givens**

817.259.3536

Jeff.Givens@transwestern.com

The information provided herein was obtained from sources believed reliable; however, Transwestern makes no guarantees, warranties or representations as to the completeness or accuracy thereof. The presentation of this property is submitted subject to errors, omissions, change of price or conditions, prior sale or lease, or withdrawal without notice. Copyright © 2024 Transwestern.

# 711 W KENNEDALE PARKWAY, BUILDING D

KENNEDALE, TX 76060 | TARRANT COUNTY



TRANSWESTERN

REAL ESTATE  
SERVICES



## For Leasing Information:

**Lyndon Todd**

817.528.6680

Lyndon.Todd@transwestern.com

**Jeff Givens**

817.259.3536

Jeff.Givens@transwestern.com

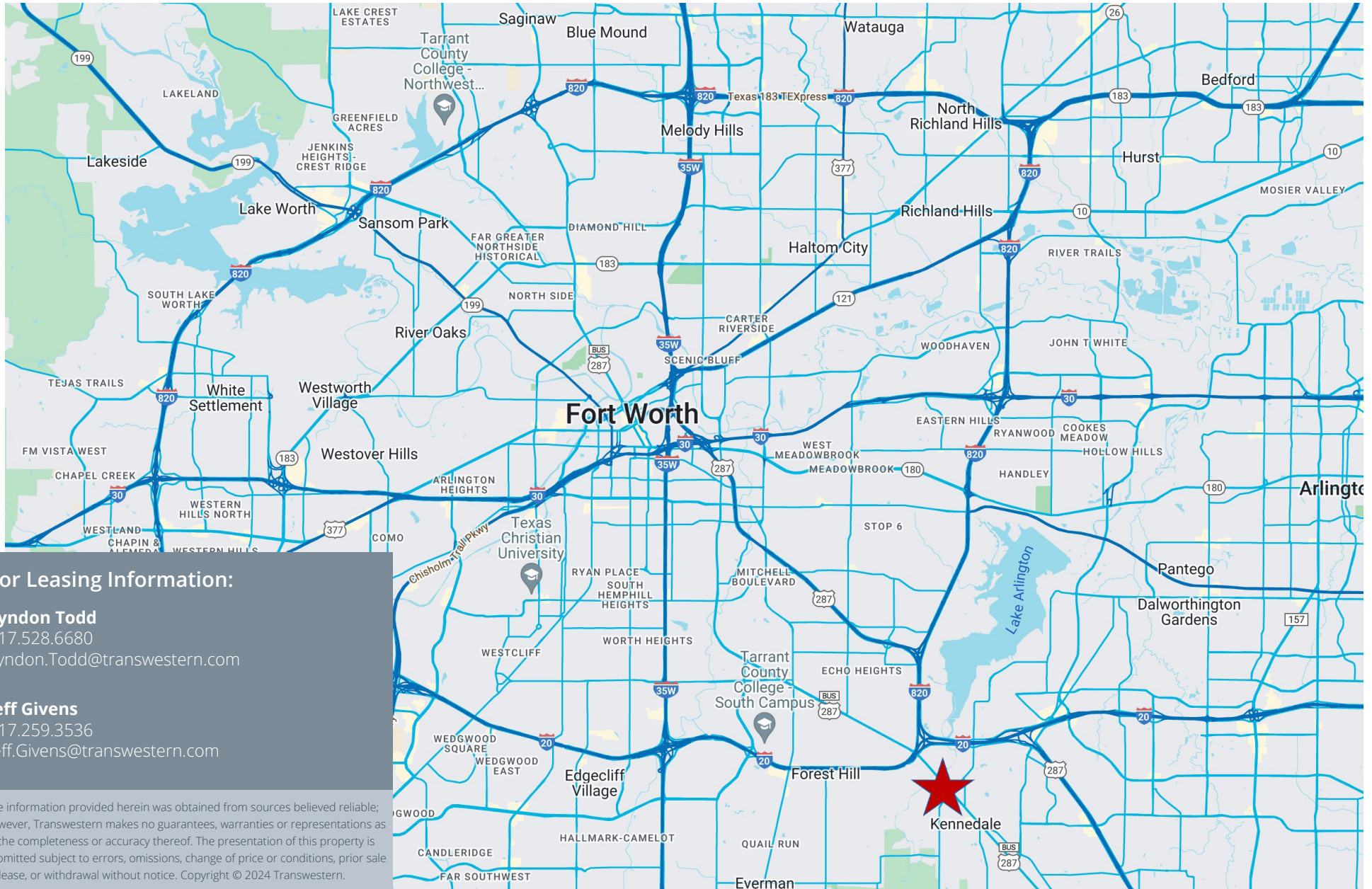
The information provided herein was obtained from sources believed reliable; however, Transwestern makes no guarantees, warranties or representations as to the completeness or accuracy thereof. The presentation of this property is submitted subject to errors, omissions, change of price or conditions, prior sale or lease, or withdrawal without notice. Copyright © 2024 Transwestern.

# 711 W KENNEDALE PARKWAY, BUILDING D

KENNEDALE, TX 76060 | TARRANT COUNTY

  
TRANSWESTERN

REAL ESTATE  
SERVICES



## For Leasing Information:

**Lyndon Todd**

817.528.6680

Lyndon.Todd@transwestern.com

**Jeff Givens**

817.259.3536

Jeff.Givens@transwestern.com

The information provided herein was obtained from sources believed reliable; however, Transwestern makes no guarantees, warranties or representations as to the completeness or accuracy thereof. The presentation of this property is submitted subject to errors, omissions, change of price or conditions, prior sale or lease, or withdrawal without notice. Copyright © 2024 Transwestern.

