



AVAILABILITIES

LEASE RATE: \$2.40

SUITE	SF	SUITE DESCRIPTION	CLICK TO VIEW
Suite 120	5,332	Double doors off lobby. 10 offices, conference room, reception, large kitchen, and huge open area.	
Suite 220*	1,693	SPEC SUITE - 2 offices, kitchen, and large open area. Take a Virtual Tour!	
Suite 250	3,464	Double door entry, 10 offices, conference room, kitchen, and large open area.	
Suite 310	1,555	3 offices, conference room, large mail/file room, reception, and open area. Available April.	

Back to Availabilities

Rev. 03.16.26

For leasing information, please contact:

PETER JOYCE
Vice President
949.203.3035
peter.joyce@streamrealty.com
Lic. 02001428

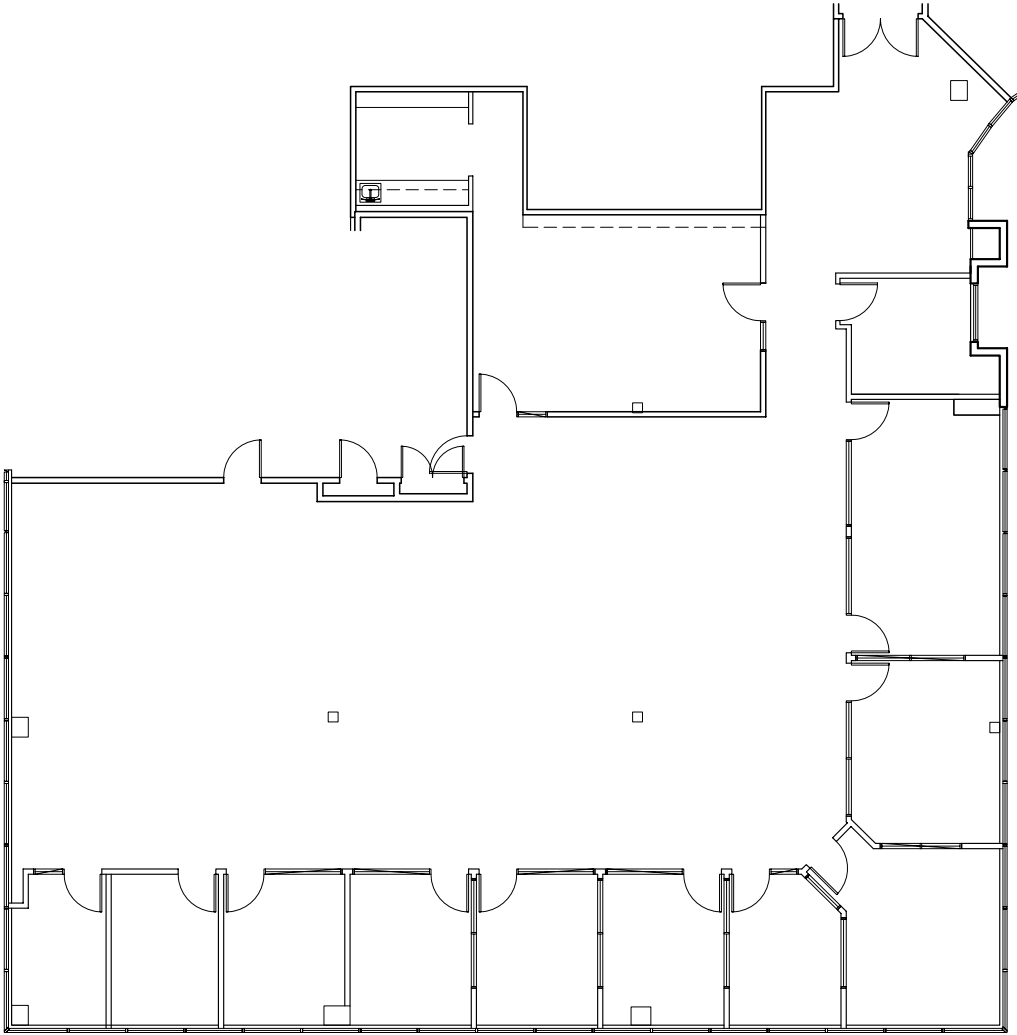
MIKE ADAMS
Managing Director
949.203.3033
madams@streamrealty.com
Lic. 01875266





Suite 120

5,332 RSF



[Back to Availabilities](#)

Rev. 03.16.26

For leasing information, please contact:

PETER JOYCE
Vice President
949.203.3035
peter.joyce@streamrealty.com
Lic. 02001428

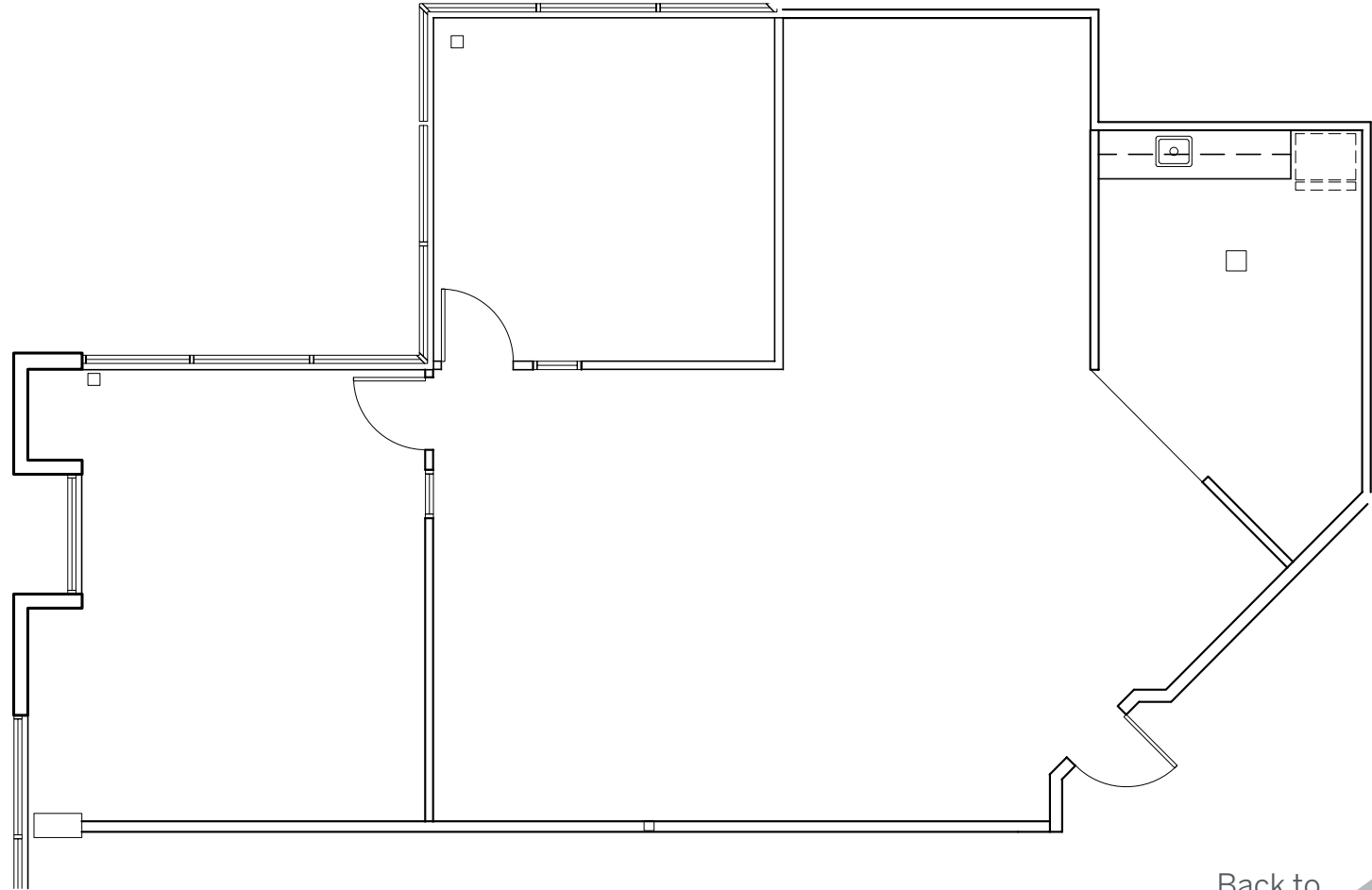
MIKE ADAMS
Managing Director
949.203.3033
madams@streamrealty.com
Lic. 01875266




Suite 220

1,693 RSF

\$4,500 Moving Allowance



[Back to
Availabilities](#) 

Rev. 03.16.26

For leasing
information,
please contact:

PETER JOYCE
Vice President
949.203.3035
peter.joyce@streamrealty.com
Lic. 02001428

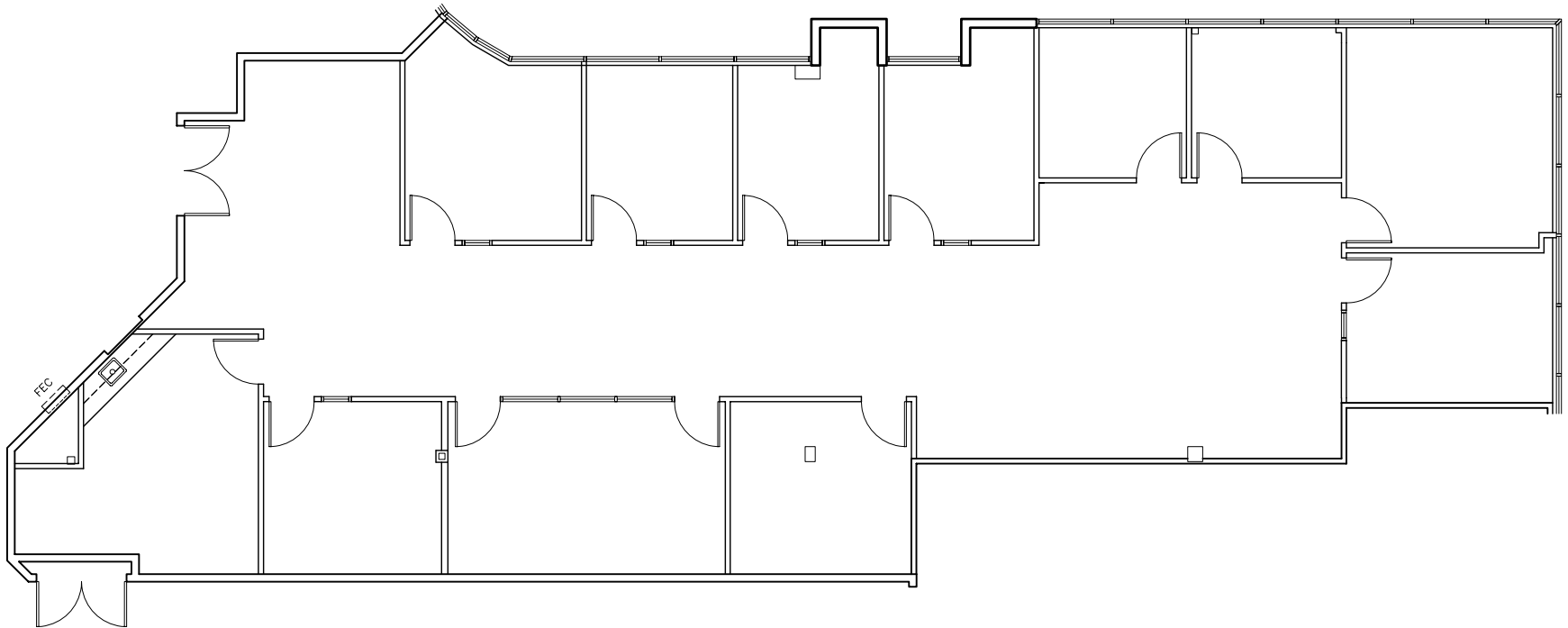
MIKE ADAMS
Managing Director
949.203.3033
madams@streamrealty.com
Lic. 01875266




**PALA
PLACE**
CORPORATE
CENTER

Suite 250

3,464 RSF



[Back to
Availabilities](#) 

Rev. 03.16.26

For leasing
information,
please contact:

PETER JOYCE
Vice President
949.203.3035
peter.joyce@streamrealty.com
Lic. 02001428

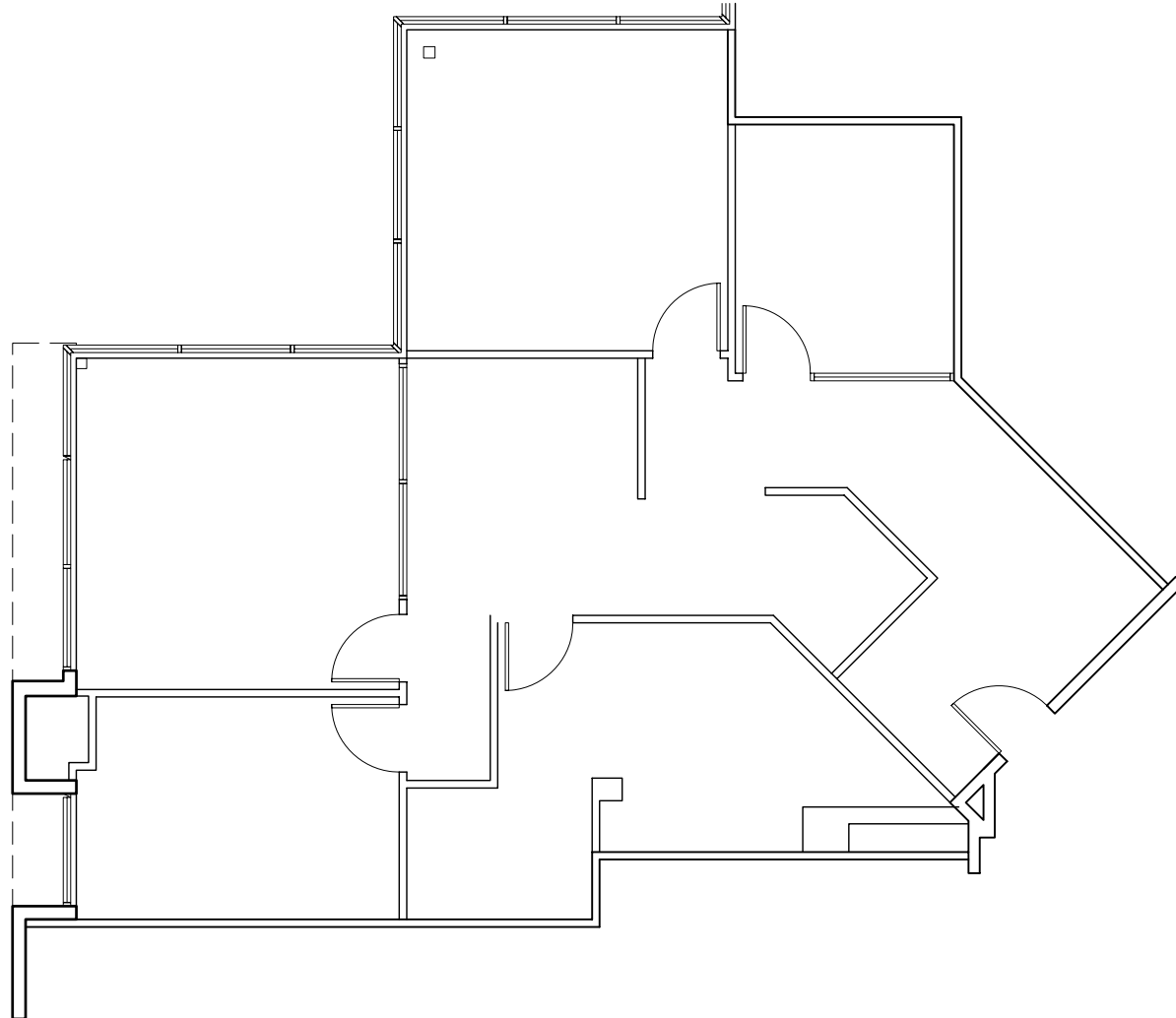
MIKE ADAMS
Managing Director
949.203.3033
madams@streamrealty.com
Lic. 01875266






Suite 310

1,555 RSF



[Back to Availabilities](#) 

Rev. 03.16.26

For leasing information, please contact:

PETER JOYCE
Vice President
949.203.3035
peter.joyce@streamrealty.com
Lic. 02001428

MIKE ADAMS
Managing Director
949.203.3033
madams@streamrealty.com
Lic. 01875266

